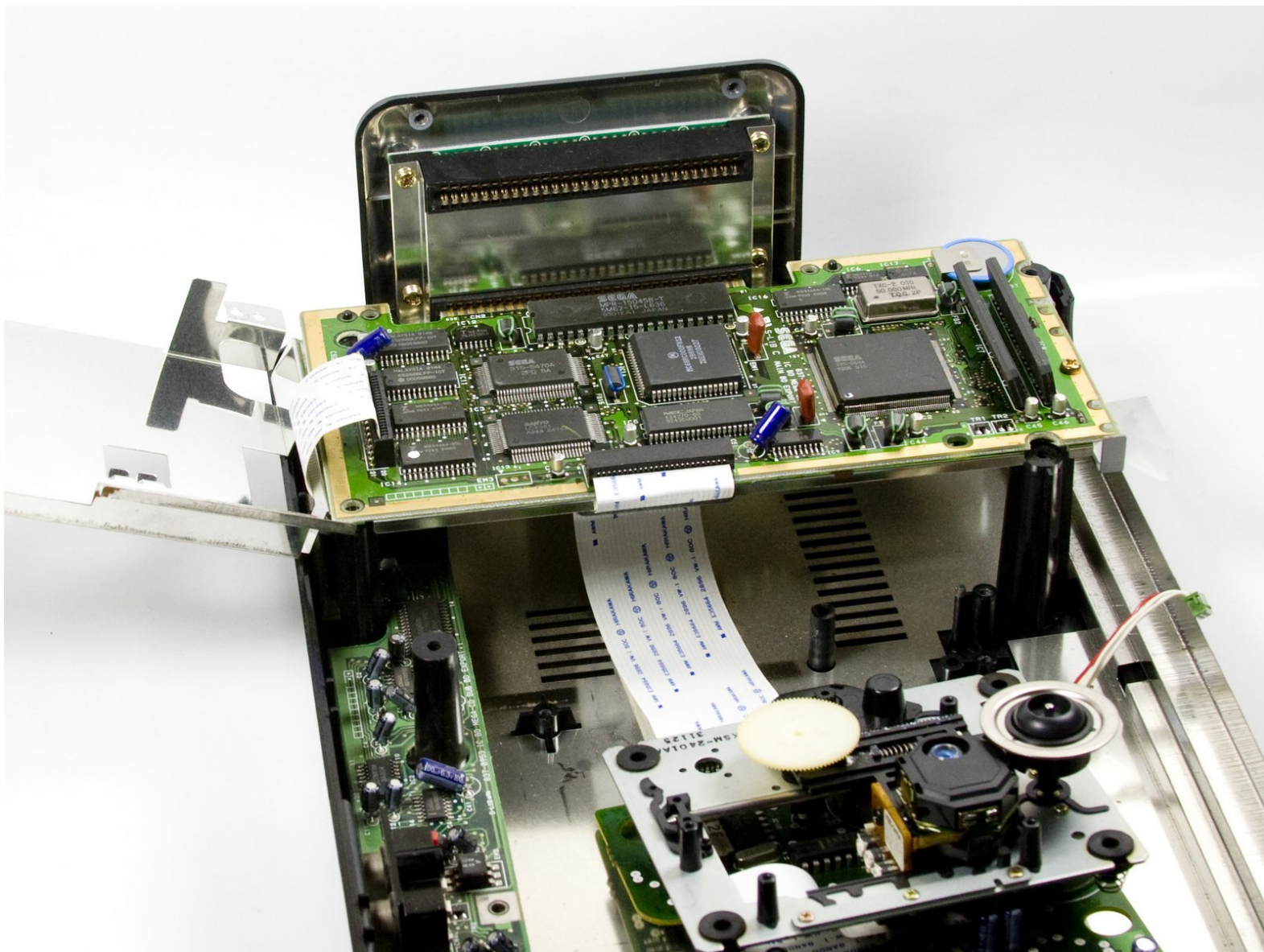




Sega CD Motherboard/AC Power Board Replacement

This guide shows how to remove the motherboard unit from the Sega CD game console.

Written By: Ryan Kotzebue



INTRODUCTION

Before attempting this guide complete the [CD Tray Removal Guide](#).



TOOLS:

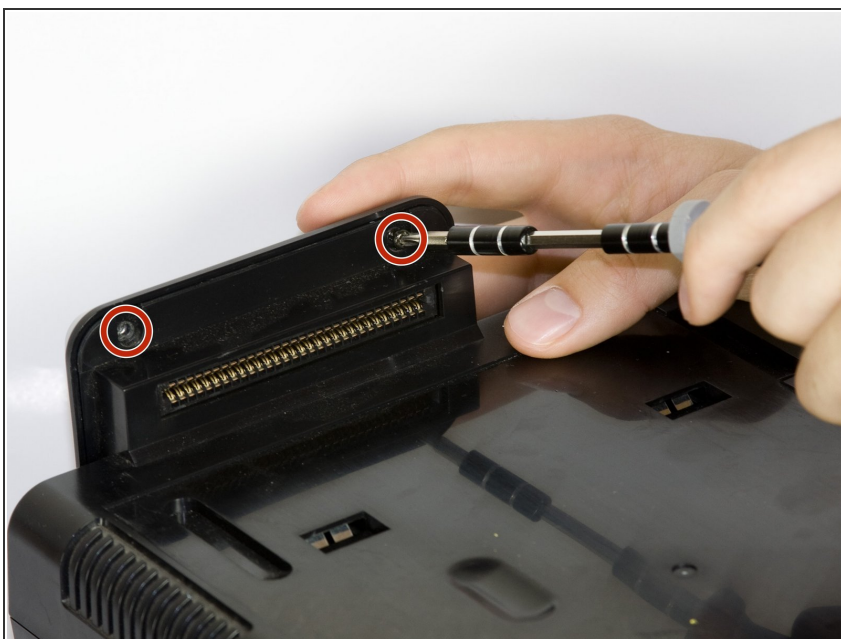
- [Phillips #00 Screwdriver](#) (1)
 - [Spudger](#) (1)
-

Step 1 — Sega CD Plastic Housing Removal



- Using a Phillips head screwdriver remove six screws from the bottom of the console.
- The six screws are marked.

Step 2



- Remove the two screws that attach the Genesis' connector to the rest of the console.
- The two screws are marked in the diagram.

Step 3



- Slide the lock tab to the left to separate the halves of the console.

Step 4



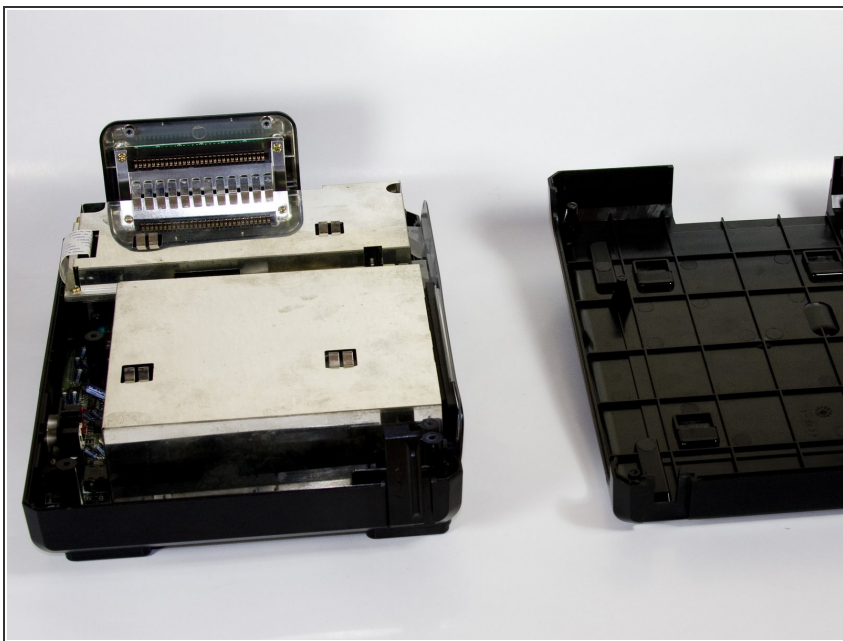
- Lift from the left side to remove the top of the case.

Step 5



- Using the spudger, pry the cover off of the Genesis attachment.

Step 6



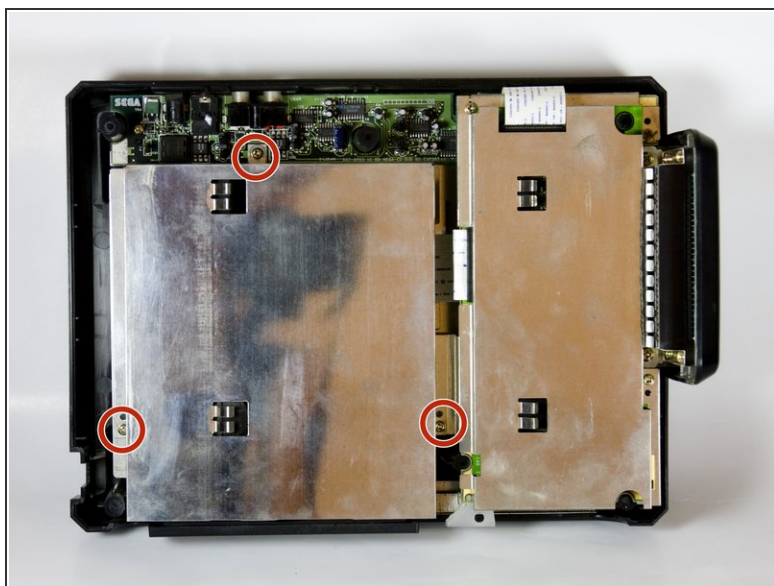
- Lift the top of the case to remove the cover.

Step 7



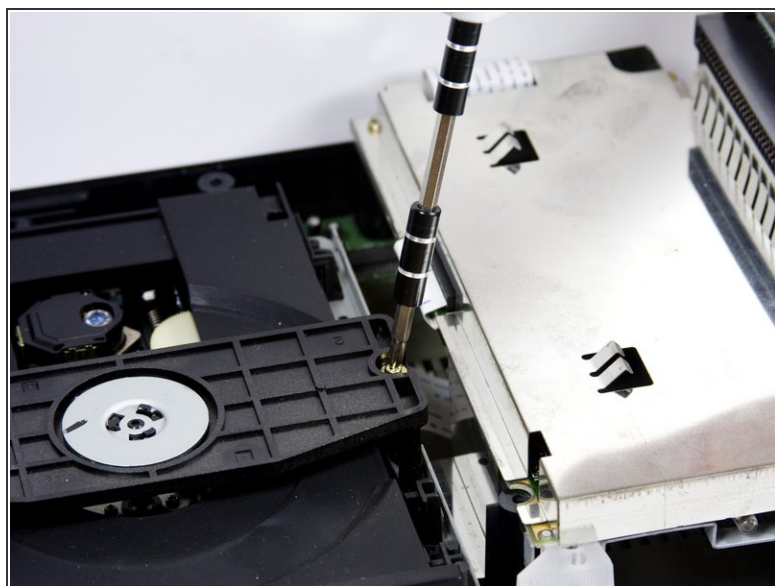
- Remove the faceplate by pulling it up, then out.

Step 8 — CD Tray



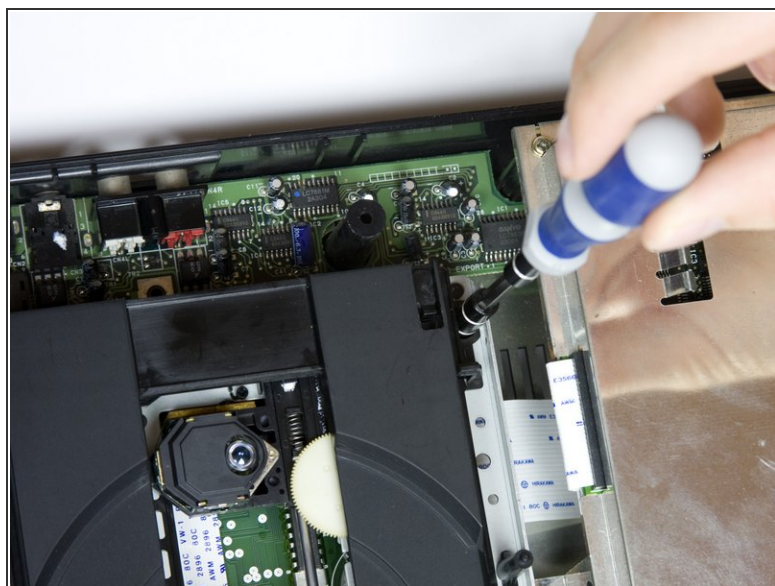
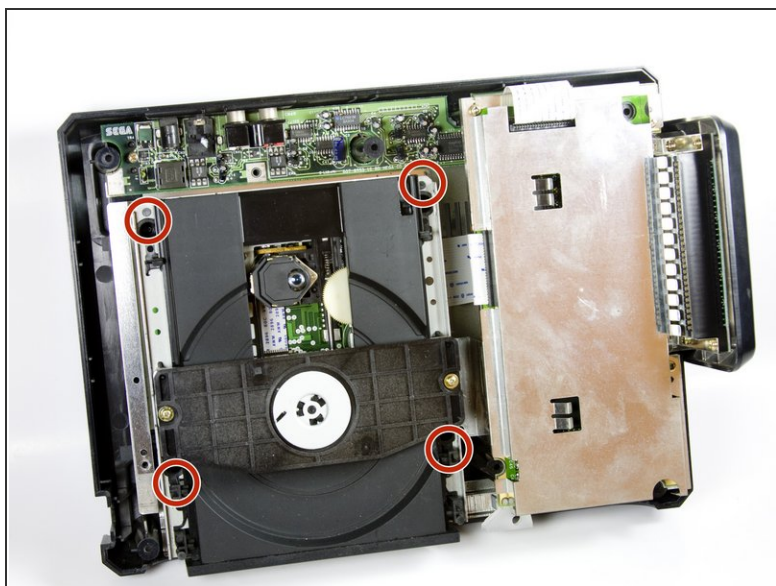
- Remove metal plate by unscrewing the three screws with the Phillips head screwdriver and then lifting the plate.
- The three screws are shown on the diagram.

Step 9



- Remove the two screws from the plastic bar.
- The two screws are shown pictured.

Step 10



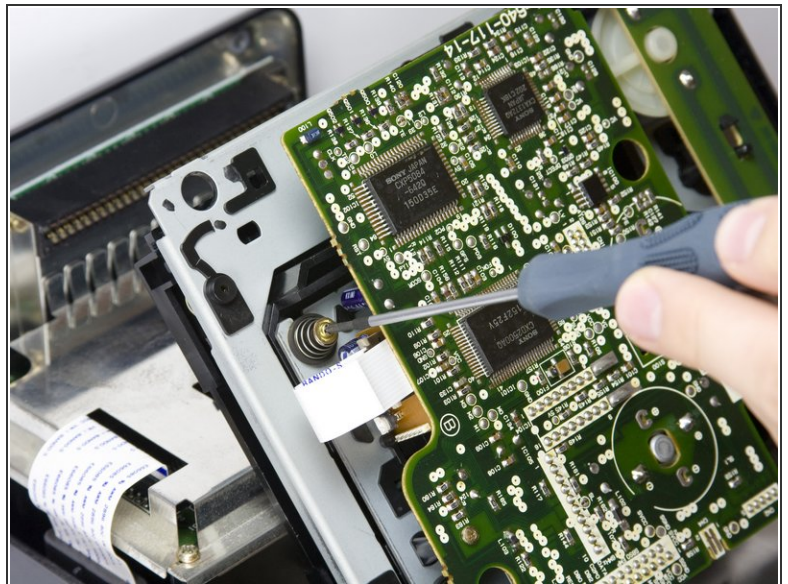
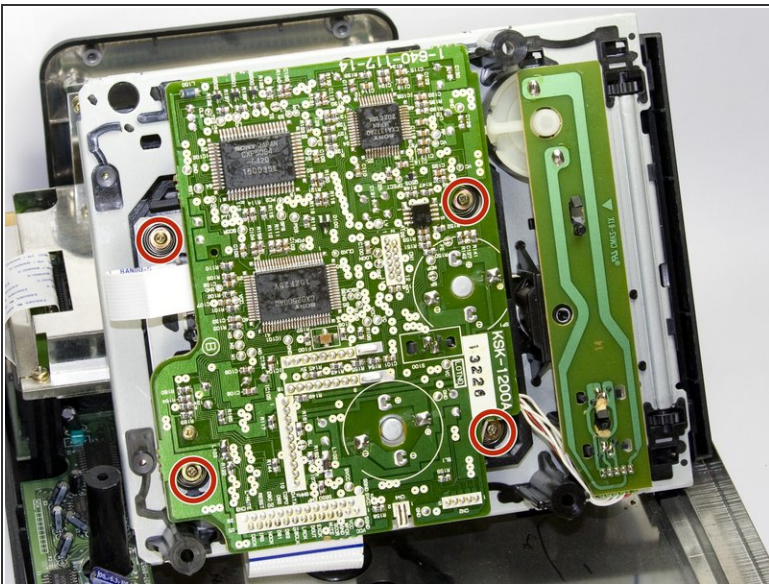
- To remove the CD tray
- Remove the four screws with the Phillips head screwdriver.

Step 11




- Carefully unplug the wire connected to optical reader.

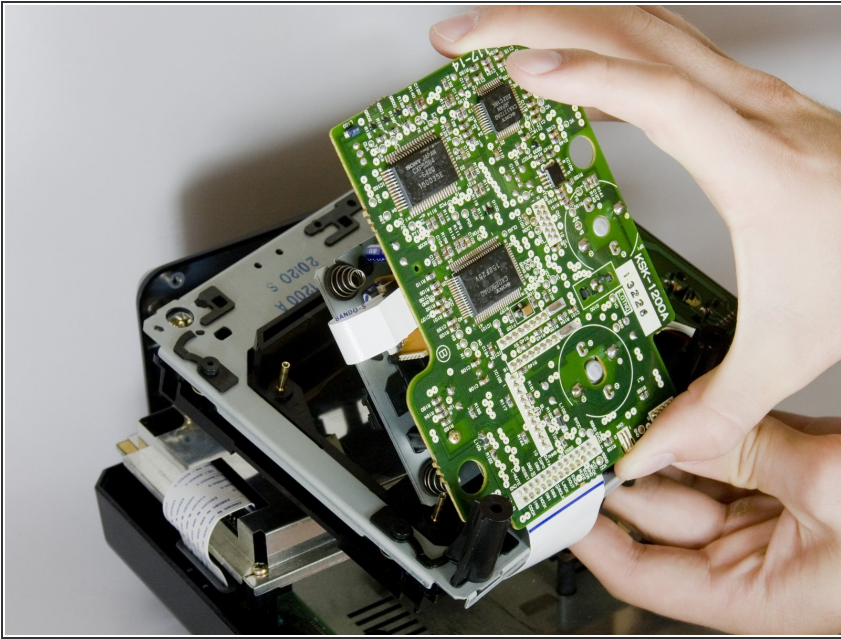
Step 12



- Remove the four screws on the underside of the CD tray with a small Phillips head screwdriver.
- The four screws are highlighted on the diagram.

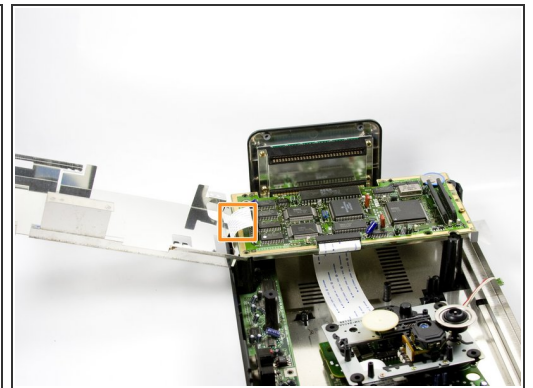
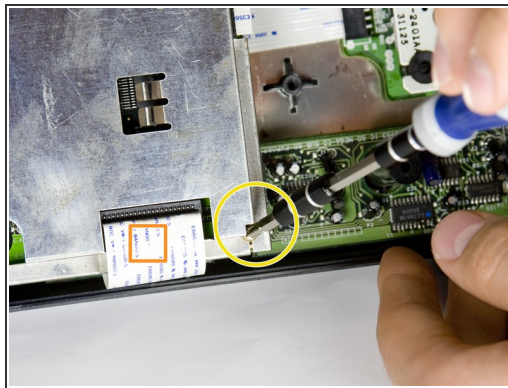
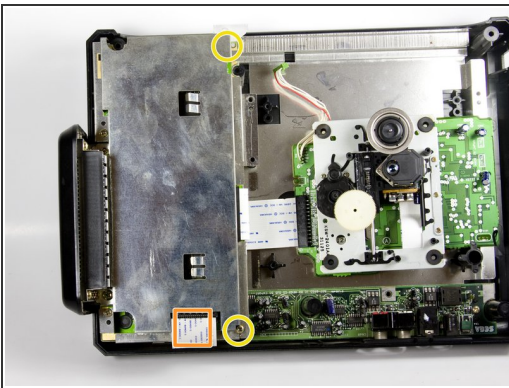
 The four springs below the circuit board are attached to the screws, so be careful not to lose them when you remove the screws.

Step 13



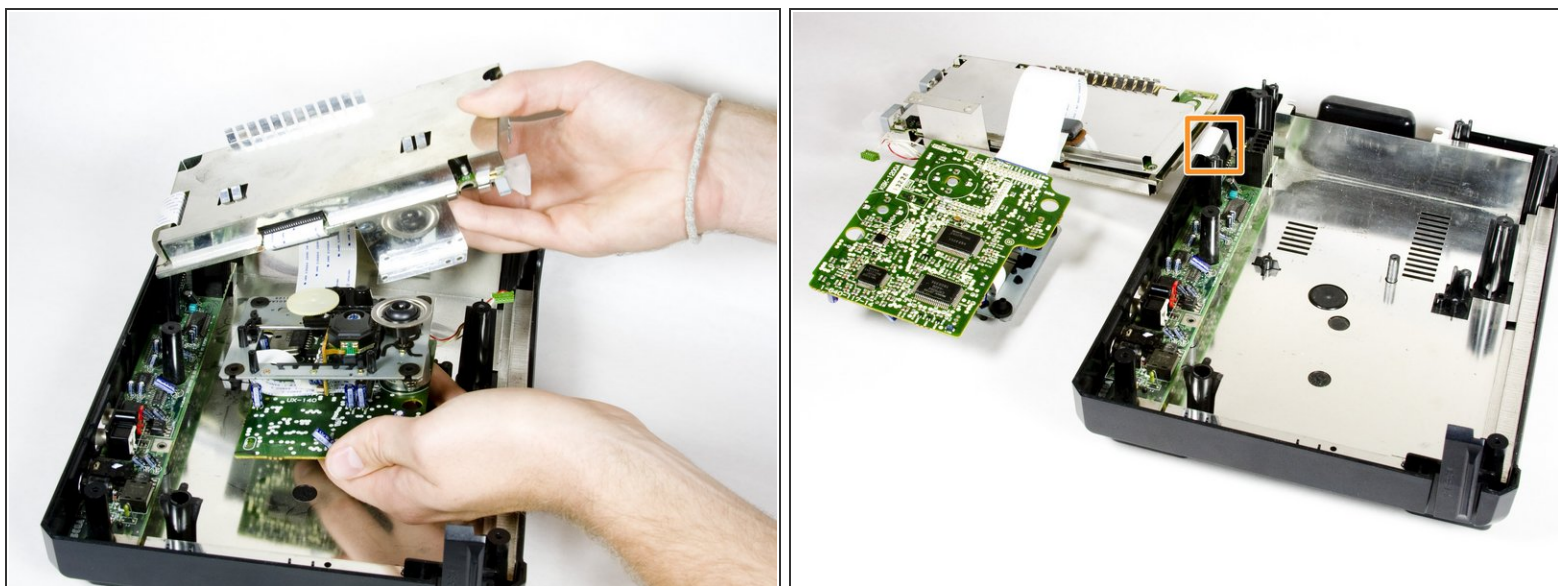
- Carefully remove the CD tray from circuit board.

Step 14 — Motherboard/AC Power Board



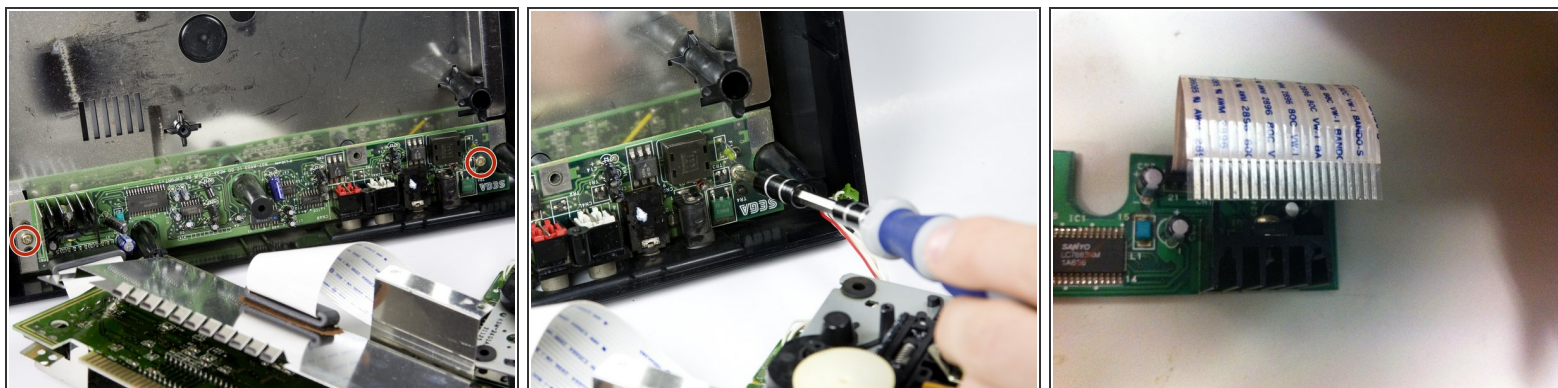
- Remove the two bronze screws from the metal plate with a medium Phillips head screwdriver.
 - The screws are marked on the diagram.
- Carefully lift the metal plate up to expose the motherboard.
 - There is a wire strip running through the metal plate that is soldered to motherboard and power supply board. The plate cannot be completely removed. Do NOT force plate upwards. All the ribbon cables can be safely unplugged by simply pulling them out of their slots.

Step 15



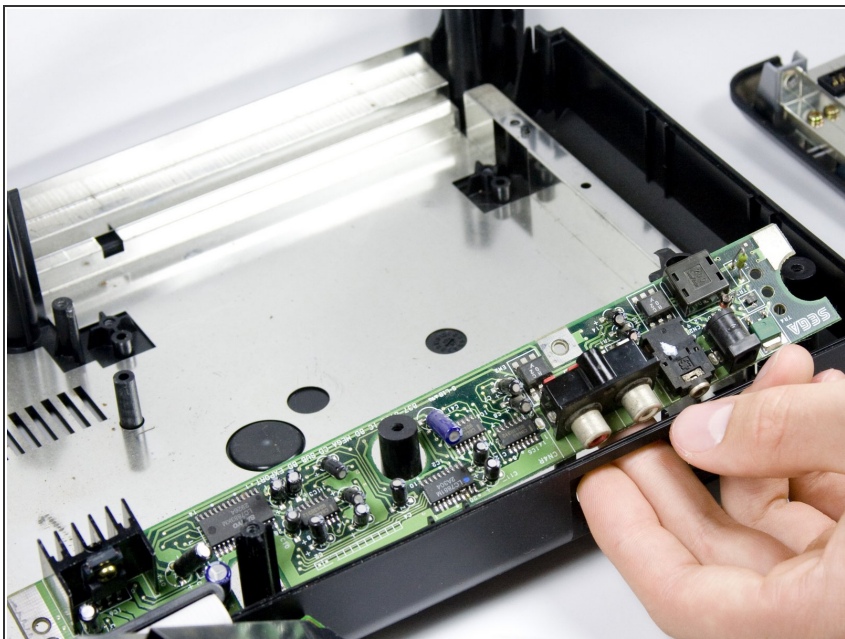
- Carefully lift off the metal plate, the motherboard, and the CD tray circuit board. Then, flip each piece over, as pictured.

Step 16



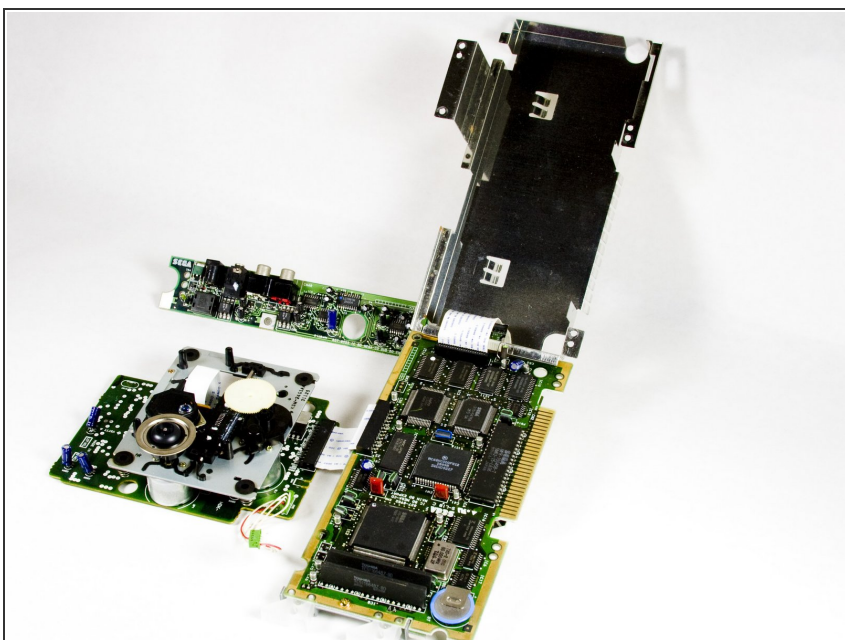
- Remove the two screws from the power supply using a medium Phillips head screwdriver.
 - The two screws are marked on the diagram.

Step 17



- Remove the power supply unit from the console by lifting the unit up.

Step 18



- This is what the motherboard unit will look like once removed.

To reassemble your device, follow these instructions in reverse order.