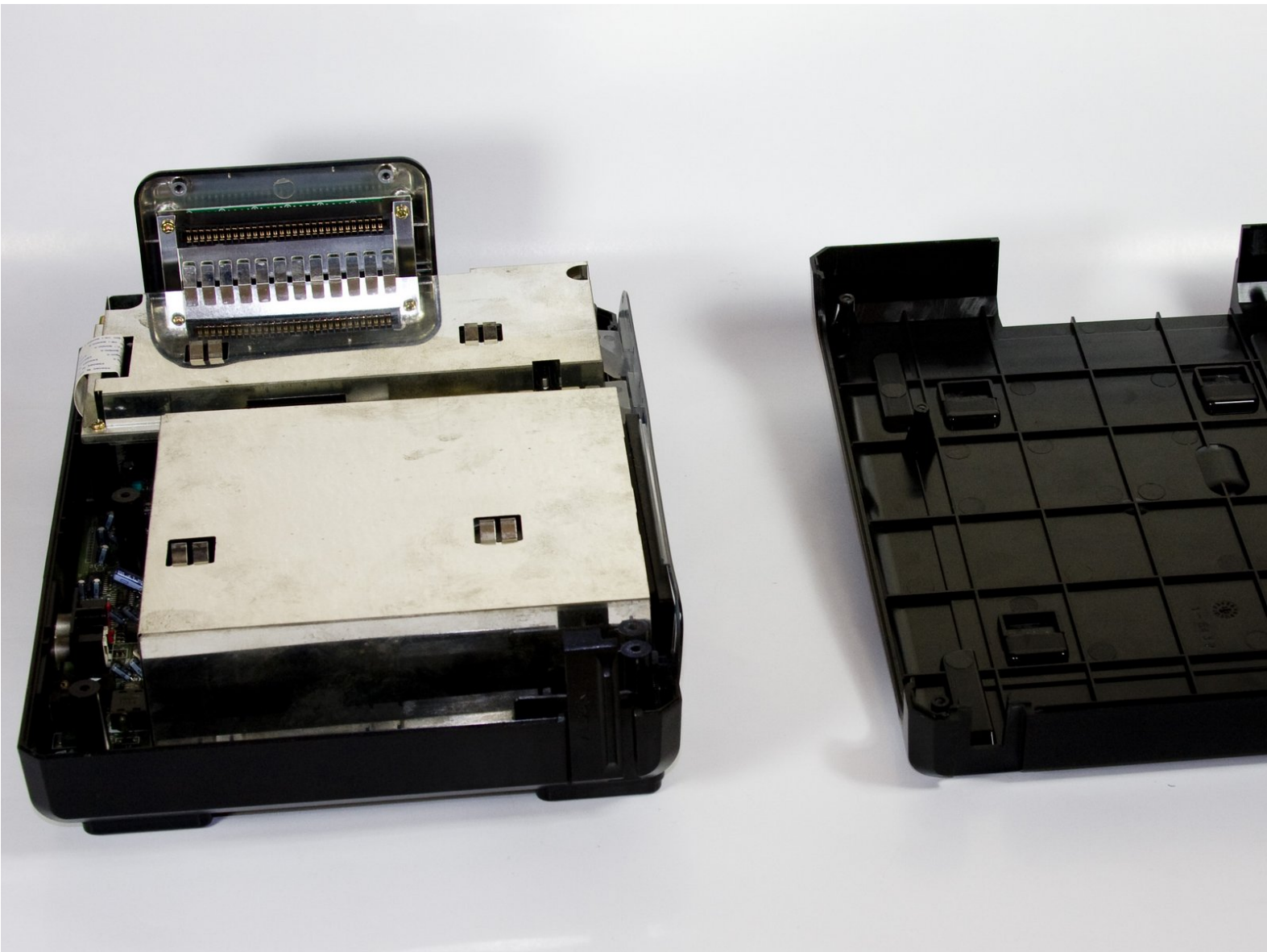




# Sega CD Plastic Housing Removal

This repair guide will take you through the process of removing the plastic Sega casing so to open up the console for further repair.

Written By: Ryan Kotzebue



## INTRODUCTION

The purpose of this replacement guide is to remove the Sega plastic casing to expose the internal content for further repair.

---

### TOOLS:

- [Spudger](#) (1)
  - [Phillips #00 Screwdriver](#) (1)
-

## Step 1 — Sega CD Plastic Housing Removal



- Using a Phillips head screwdriver remove six screws from the bottom of the console.
  - The six screws are marked.

## Step 2



- Remove the two screws that attach the Genesis' connector to the rest of the console.
  - The two screws are marked in the diagram.

### Step 3



- Slide the lock tab to the left to separate the halves of the console.

### Step 4



- Lift from the left side to remove the top of the case.

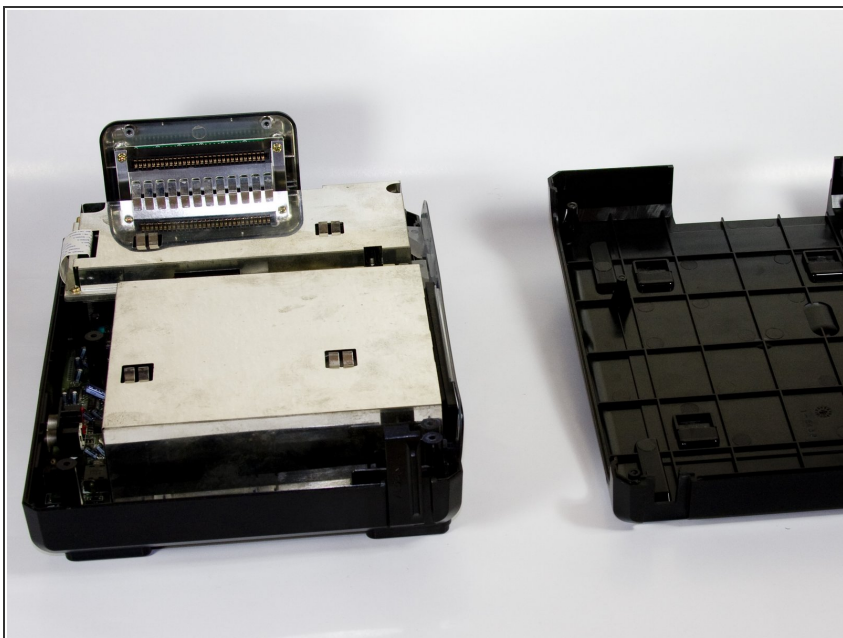


## Step 5



- Using the spudger, pry the cover off of the Genesis attachment.

## Step 6



- Lift the top of the case to remove the cover.

## Step 7



- Remove the faceplate by pulling it up, then out.

To reassemble the device, follow these instructions in reverse order.