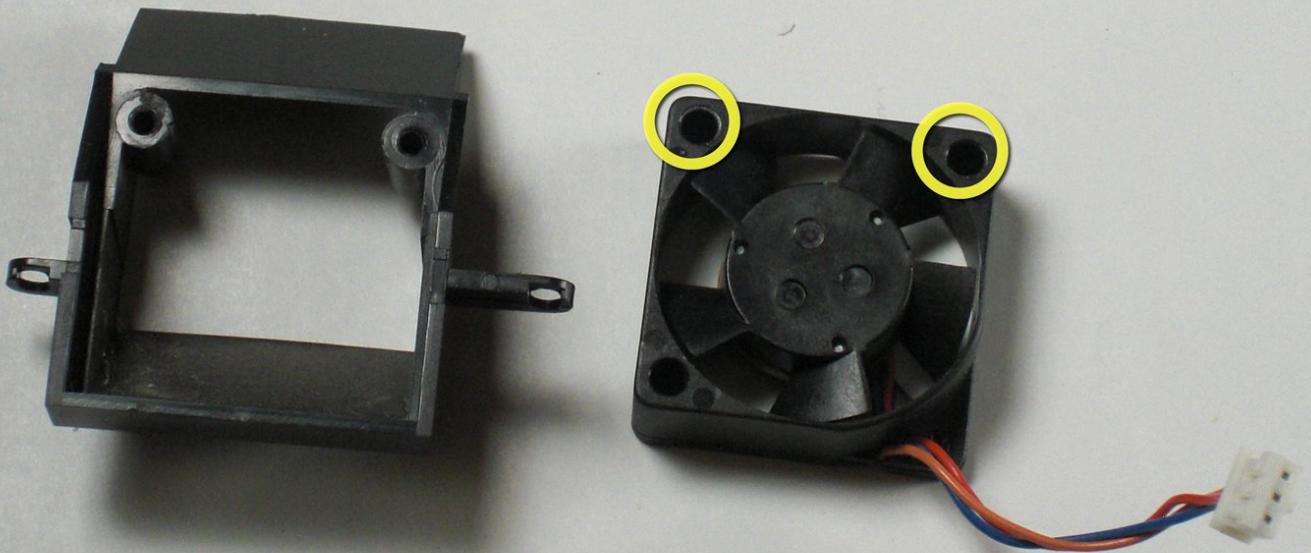




Sega Dreamcast Fan Replacement

Written By: Thorr686



INTRODUCTION

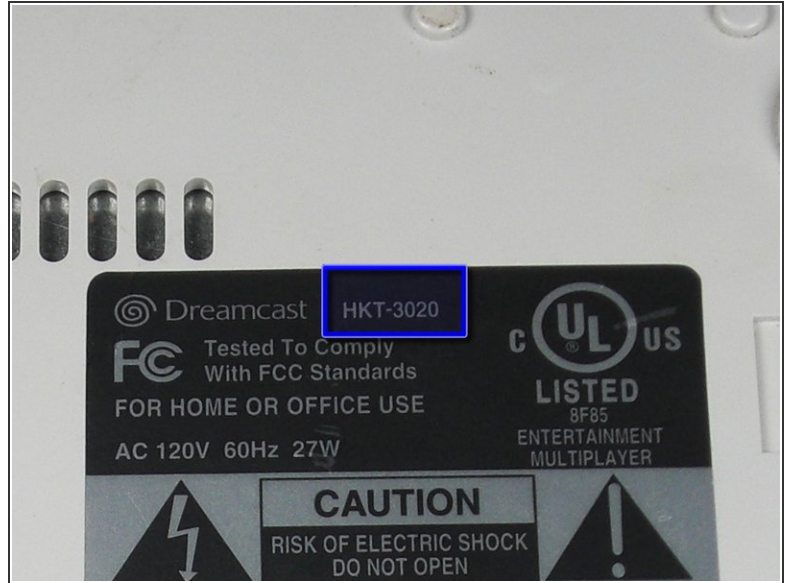
This guide details how to replace a malfunctioning fan in the Sega Dreamcast.

Be sure to replace the fan with one corresponding to your Model Number. Refer to the [Top Cover Disassembly Guide](#) for instructions on where to find your model number.

TOOLS:

- [Phillips #2 Screwdriver](#) (1)
 - [Phillips #00 Screwdriver](#) (1)
 - [Phillips #1 Screwdriver](#) (1)
-

Step 1 — Expansion Bay



⚠ Verify that the console is disconnected from the AC outlet before you begin.


- **Flip the console** over on its back.
- **Take note of your model number**, in case replacement parts are needed.

Step 2

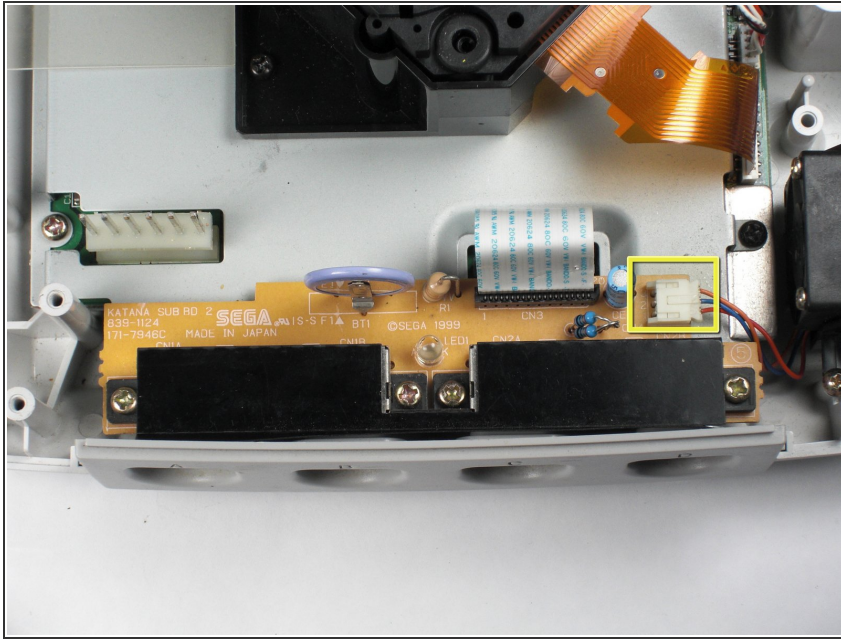


- **Remove the expansion bay** by applying pressure to the small clip on the expansion bay while prying it away from the console.

- **Locate and remove all four black 12mm Phillips #02 screws** from the underside of the console.
- ⓘ Note: Remove the expansion bay to locate the fourth screw

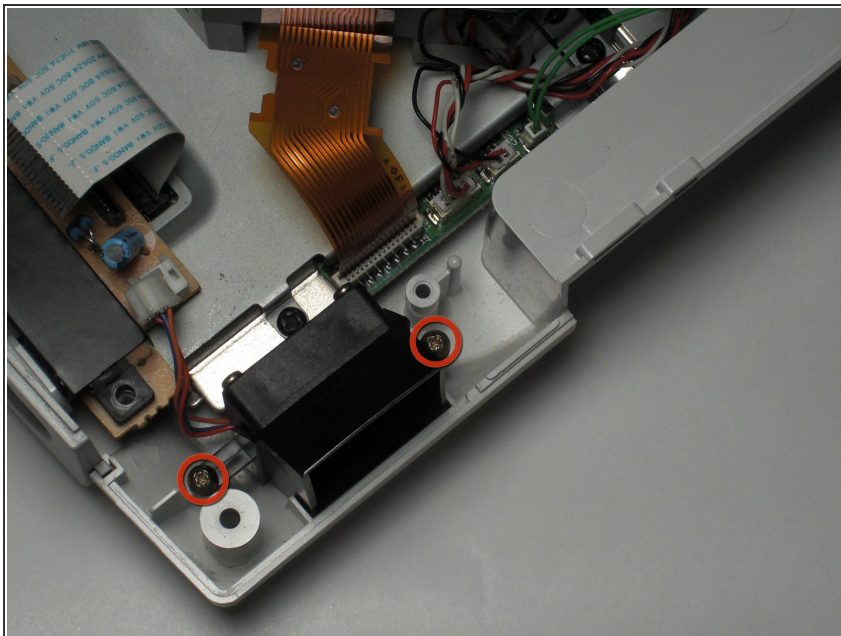
-  Internal components can be loose. Be careful that they do not fall out when removing the cover.
- Turn the console right side up.
 - **Remove the top cover** by gently lifting the upper portion of the console.

Step 5 — Fan



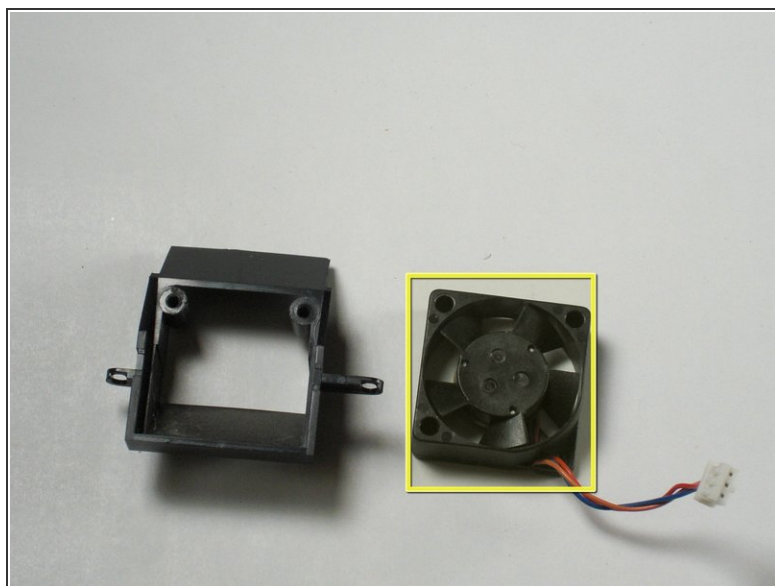
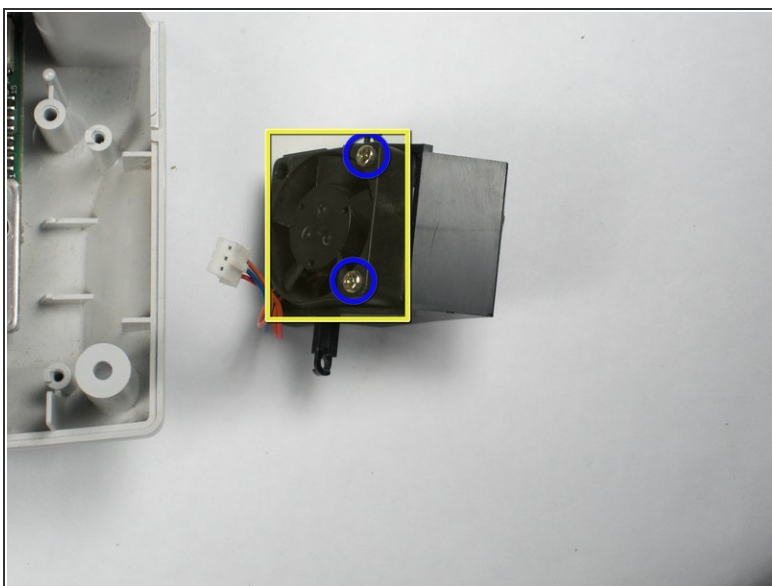
- **Remove the white fan header** by gently pulling it away from the controller port.
- ⓘ The white fan header may already be detached if you have completed the [Controller Port Disassembly Guide](#).

Step 6



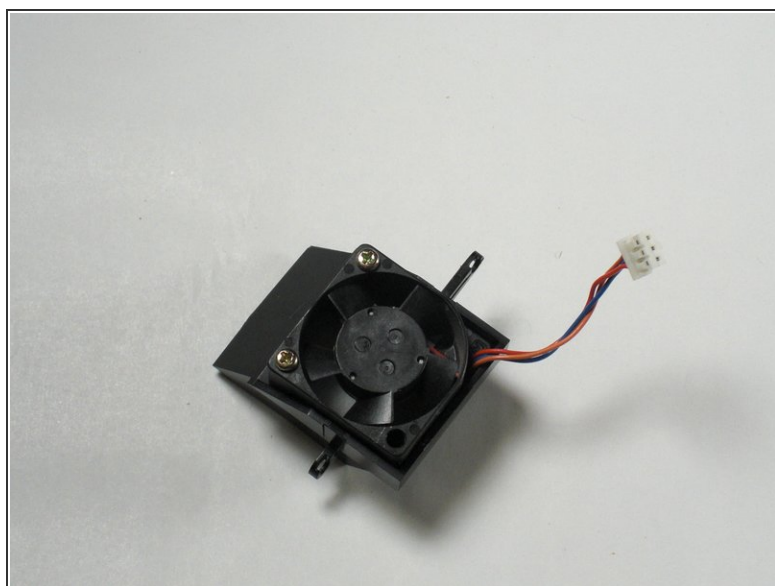
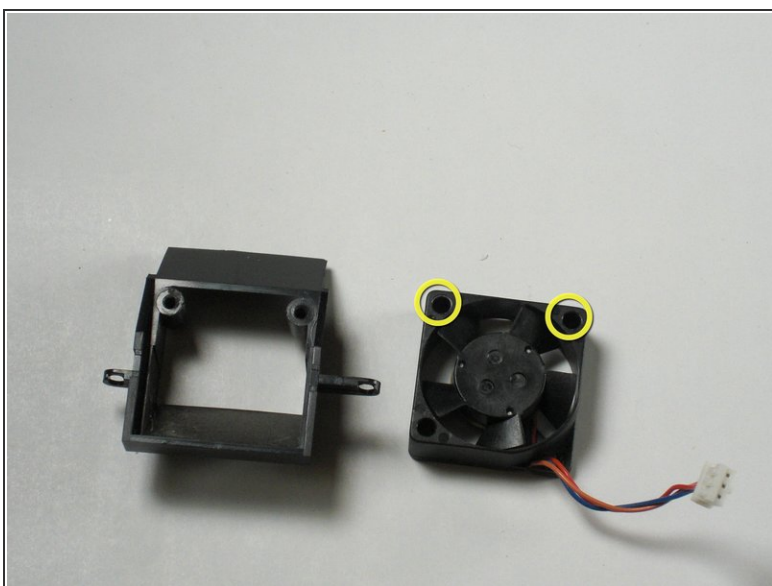
- **Remove the two 8.5mm Philips #00 screws** from the fan bracket.

Step 7



- Remove the two 17.5mm Philips #00 screws from the fan bracket.
- Remove the fan from the bracket.

Step 8 — Fan



- Connect the new fan to the fan bracket using two 17.5mm Philips #00 screws.
- Replace the fan bracket in the Dreamcast using two 8.5mm Philips #00 screws.

To reassemble your device, follow these instructions in reverse order.