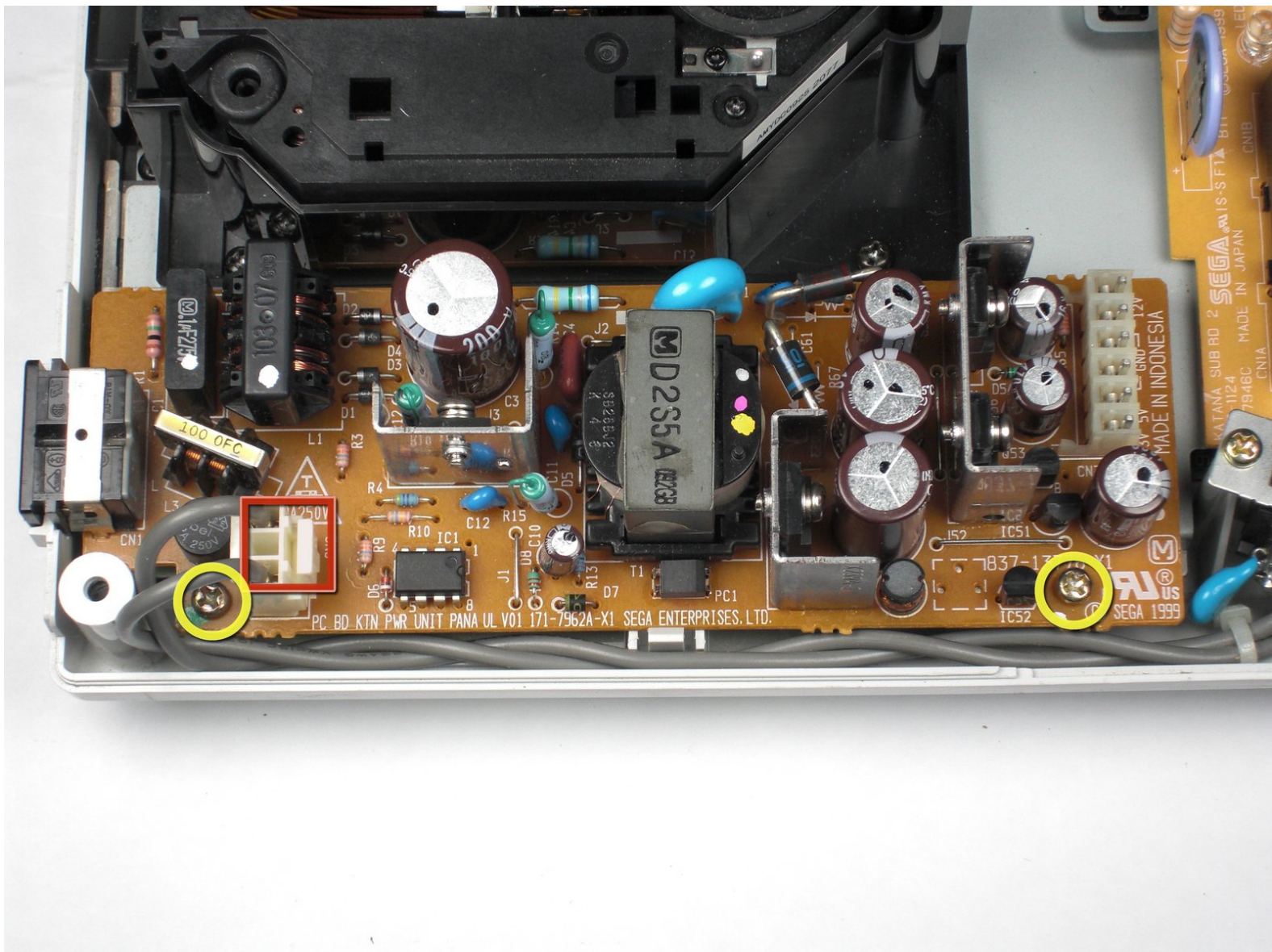




Sega Dreamcast Power Supply Replacement

Use this guide to install a power supply

Written By: Jacks216



INTRODUCTION

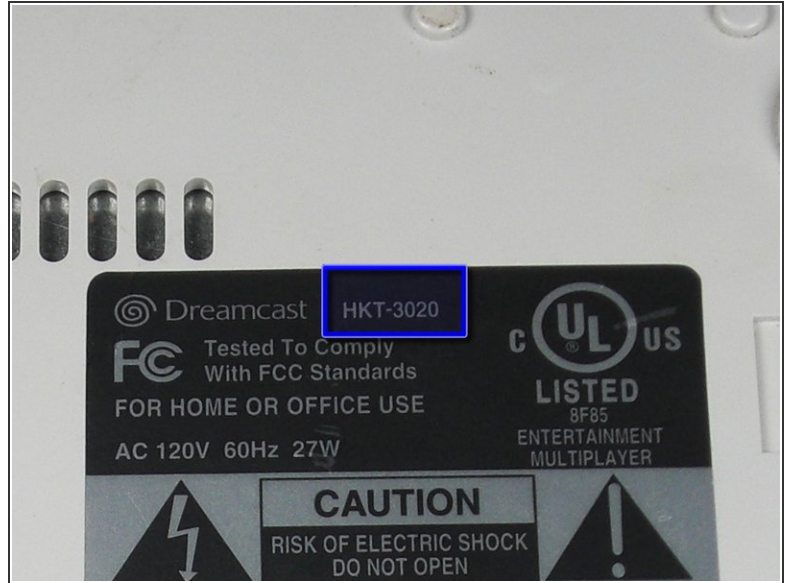
Instructions on how to replace a defective Sega Dreamcast power supply with a working power supply.



TOOLS:

- [3" Needle nose pliers](#) (1)
 - [Phillips #1 Screwdriver](#) (1)
-

Step 1 — Expansion Bay



⚠ Verify that the console is disconnected from the AC outlet before you begin.

- **Flip the console over on its back.**
- **Take note of your model number**, in case replacement parts are needed.

Step 2



- **Remove the expansion bay** by applying pressure to the small clip on the expansion bay while prying it away from the console.

Step 3 — Top Cover



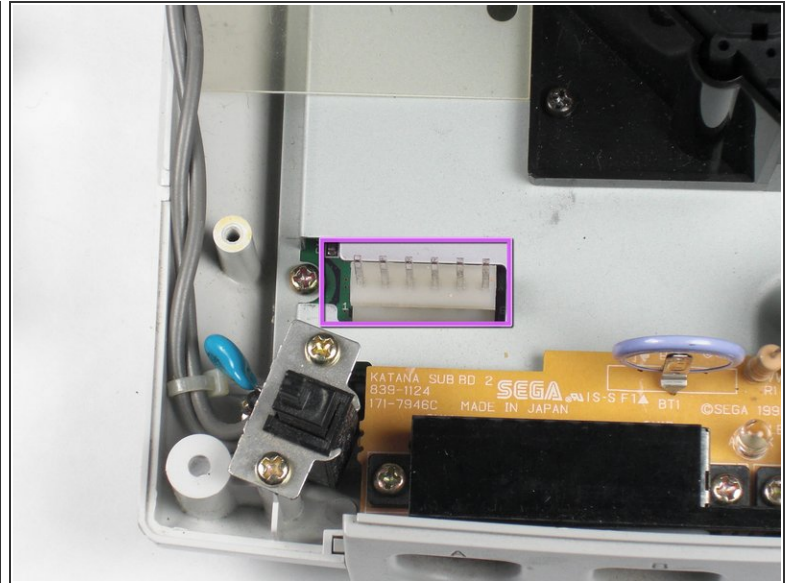
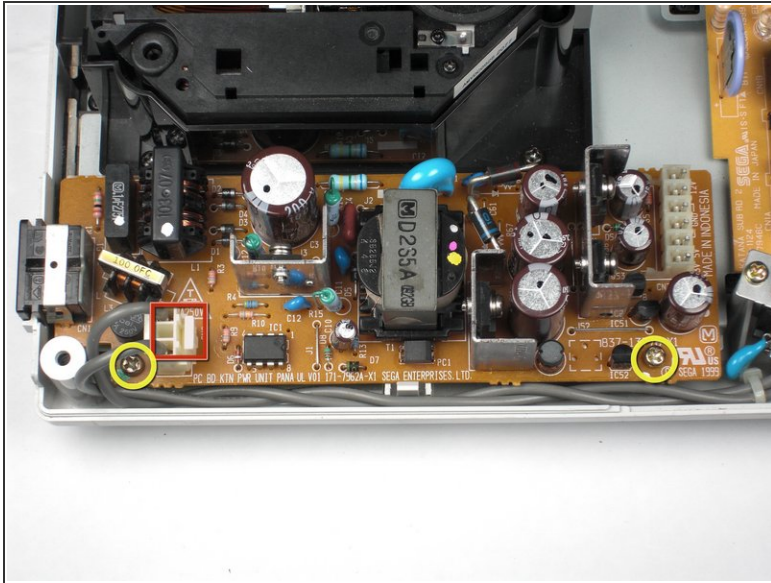
- **Locate and remove all four black 12mm Phillips #02 screws** from the underside of the console.
- ⓘ **Note:** Remove the expansion bay to locate the fourth screw

Step 4



- ⚠ **Internal components can be loose.** Be careful that they do not fall out when removing the cover.
- Turn the console right side up.
- **Remove the top cover** by gently lifting the upper portion of the console.

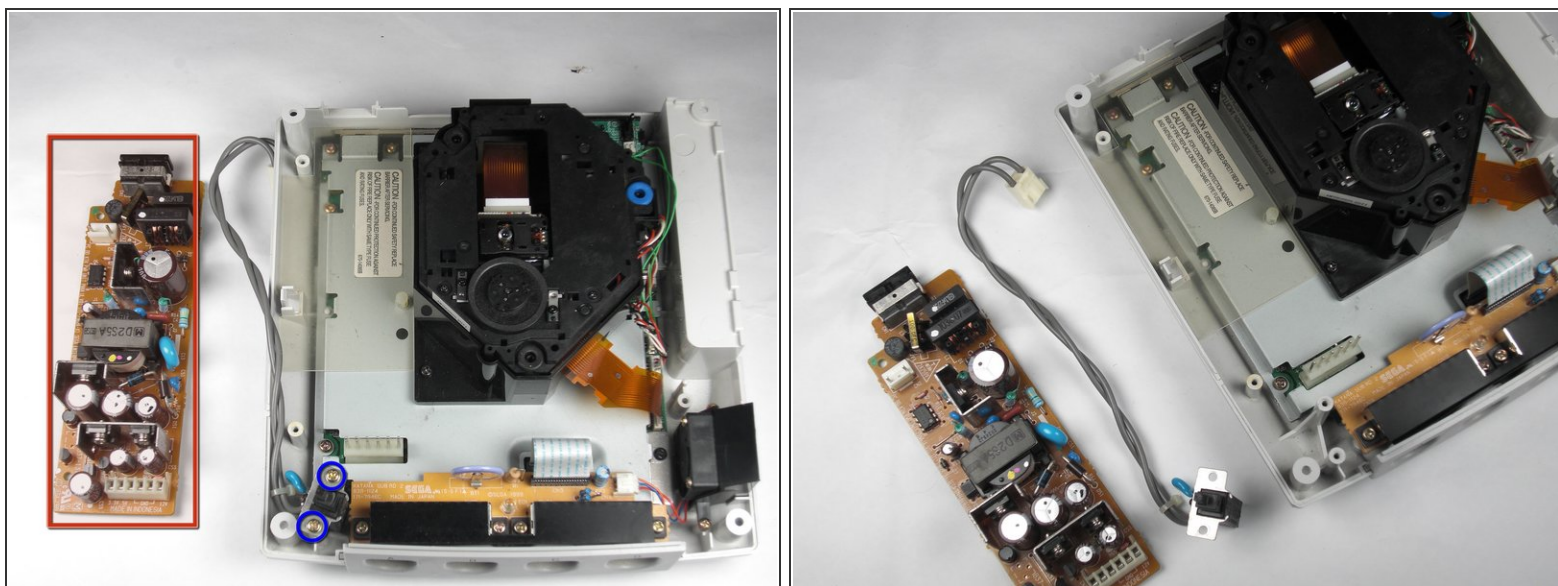
Step 5 — Power Supply



⚠ Unplug the device from the outlet. If you have just powered off the system, allow a few minutes for the capacitors to discharge before you begin working.

- **Remove the white female pin head** by pinching and lifting directly up on the harness.
- **Remove the two Philips #02 screws** from the board.
- **Remove the power board.** Using both hands, gently lift the power board away from the console without damaging the male pin head

Step 6



- **Remove the unit.** Carefully remove the power board from the console by lightly grasping the board by the edge and lifting directly upward.
- **Remove the two 10mm #02 Philips screws** to detach the switch module from the console.
- **Purchase a replacement power board.**

To reassemble your device, follow these instructions in reverse order.