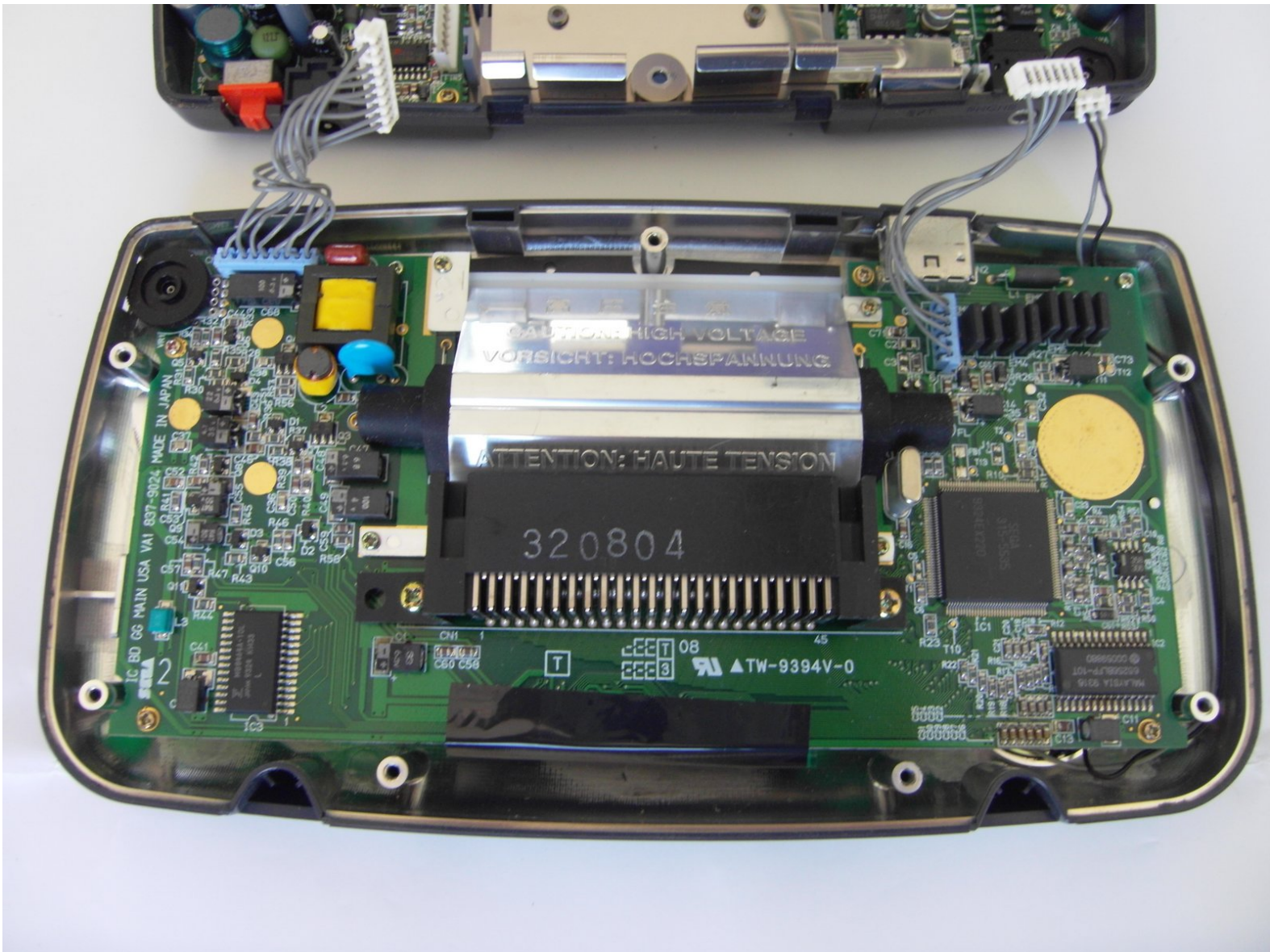




Sega Game Gear Case Replacement

How to open the Sega Game Gear case.

Written By: Lauren Thurston



INTRODUCTION

How to open the Sega Game Gear case.



TOOLS:

- [Phillips #00 Screwdriver](#) (1)
- [Gamebit 4.5mm](#) (1)

Bit available in the 64 bit kit

Step 1 — Battery



- Place your device upside down and locate the two battery compartments.

Step 2



- Press on the tabs at the bottom of the battery covers then lift up to remove.
- Remove batteries if they are present.

Step 3 — Case



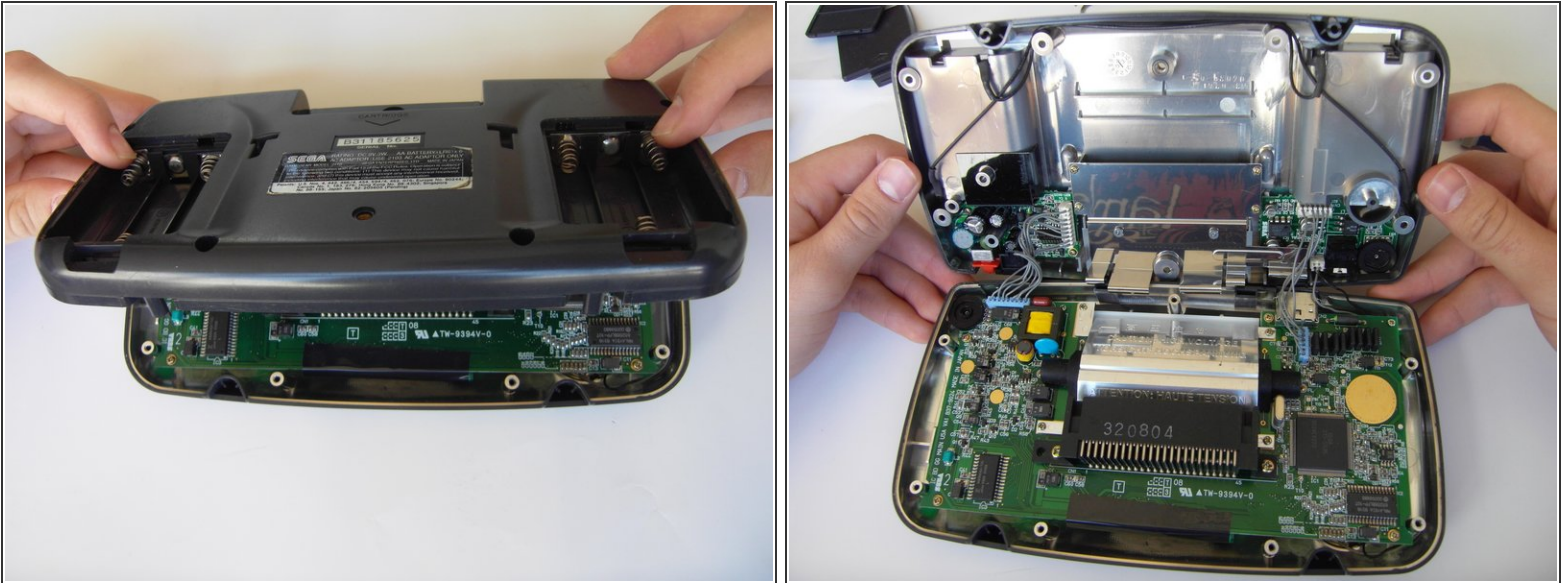
- Remove the following screws:
 - Seven Phillips screws
 - One 4.5 mm Gamebit screw

Step 4



- Use tweezers to take all other screws out.

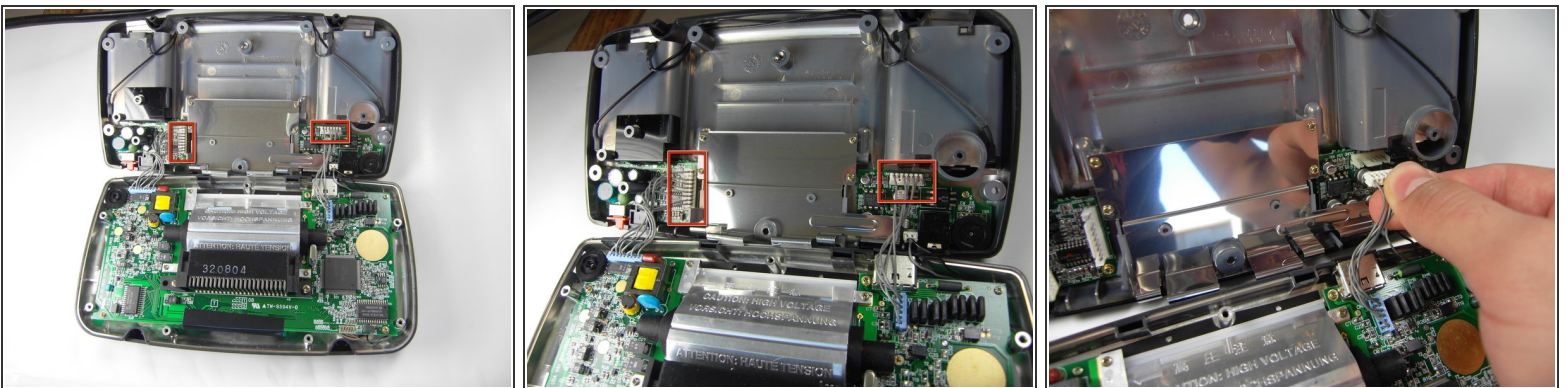
Step 5



- Gently open the case by unfolding it over the top of the Sega Game Gear.

⚠ Do not pull the back of the case away, as cables are connected between both sides.

Step 6



- Carefully unplug the 2 white-tipped connectors on the top cover.

To reassemble your device, follow these instructions in reverse order.