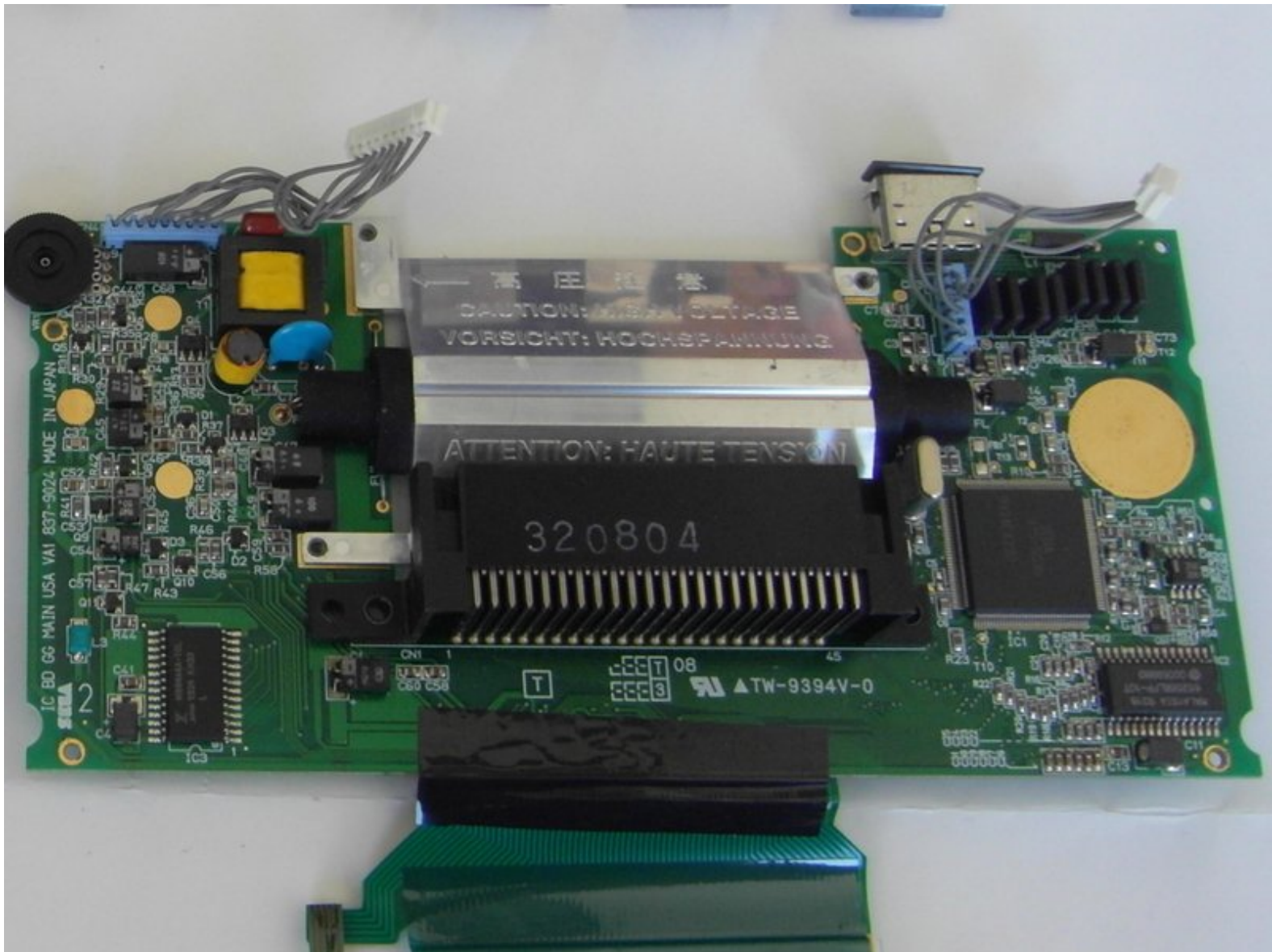




Sega Game Gear Motherboard Replacement

Use this guide to install a replacement motherboard.

Written By: Brandon Page



INTRODUCTION

A complete guide to replacing the main board.



TOOLS:

- [Gamebit 4.5mm](#) (1)

Bit available in the 64 bit kit

- [Phillips #00 Screwdriver](#) (1)
-

Step 1 — Battery



- Place your device upside down and locate the two battery compartments.

Step 2



- Press on the tabs at the bottom of the battery covers then lift up to remove.
- Remove batteries if they are present.

Step 3 — Case



- Remove the following screws:
 - Seven Phillips screws
 - One 4.5 mm Gamebit screw

Step 4



- Use tweezers to take all other screws out.

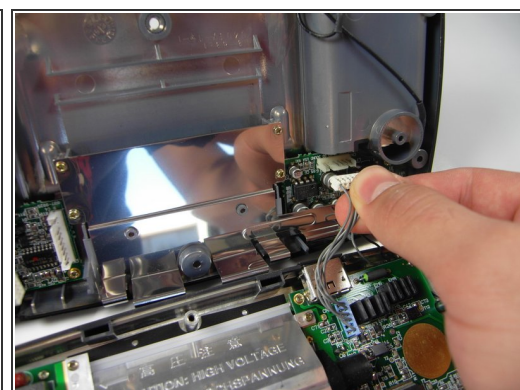
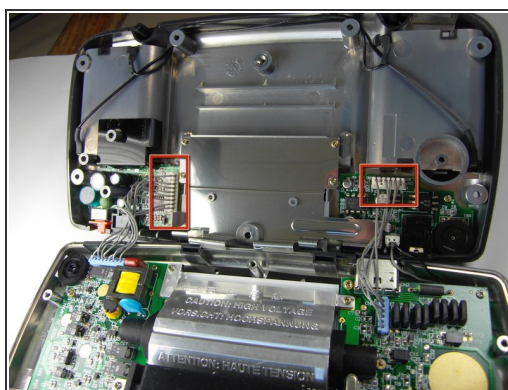
Step 5



- Gently open the case by unfolding it over the top of the Sega Game Gear.

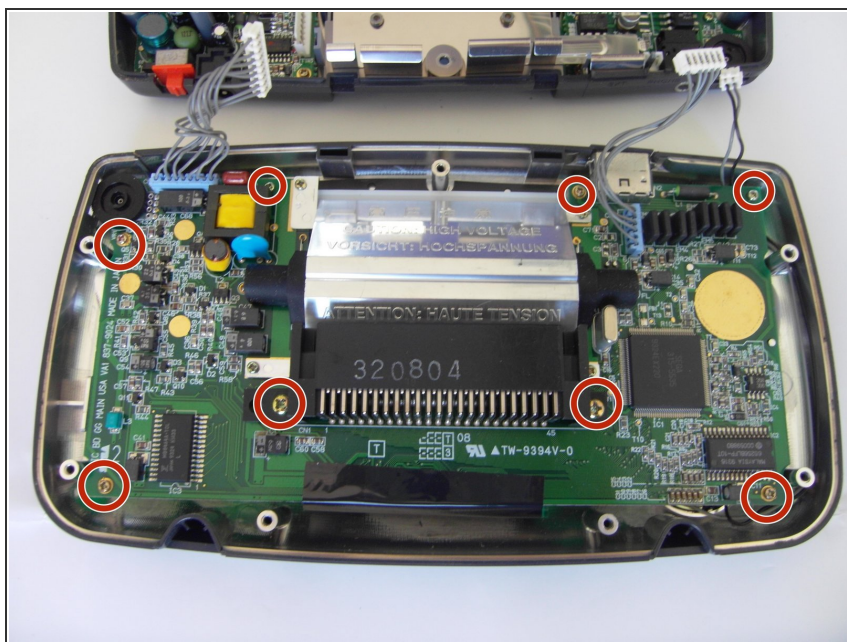
⚠ Do not pull the back of the case away, as cables are connected between both sides.

Step 6



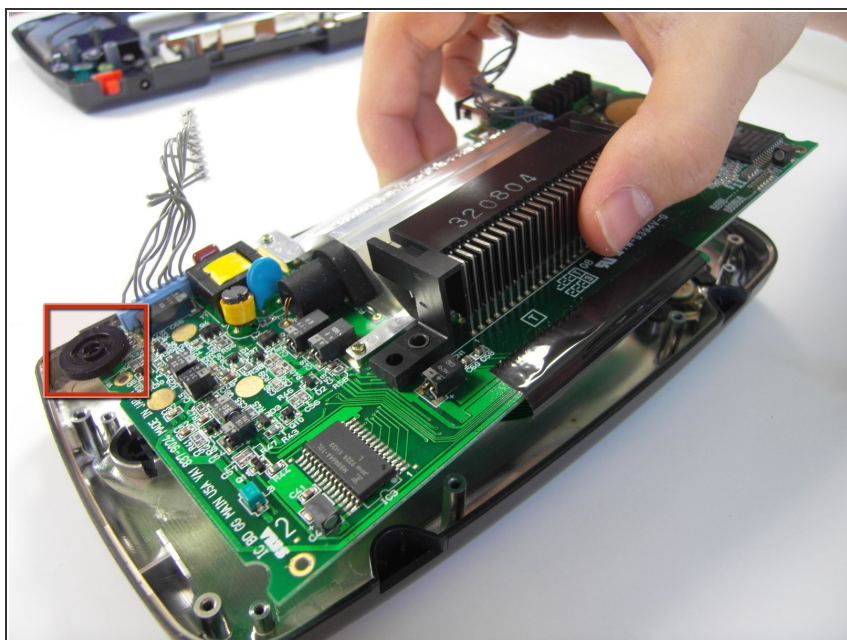
- Carefully unplug the 2 white-tipped connectors on the top cover.

Step 7 — Motherboard



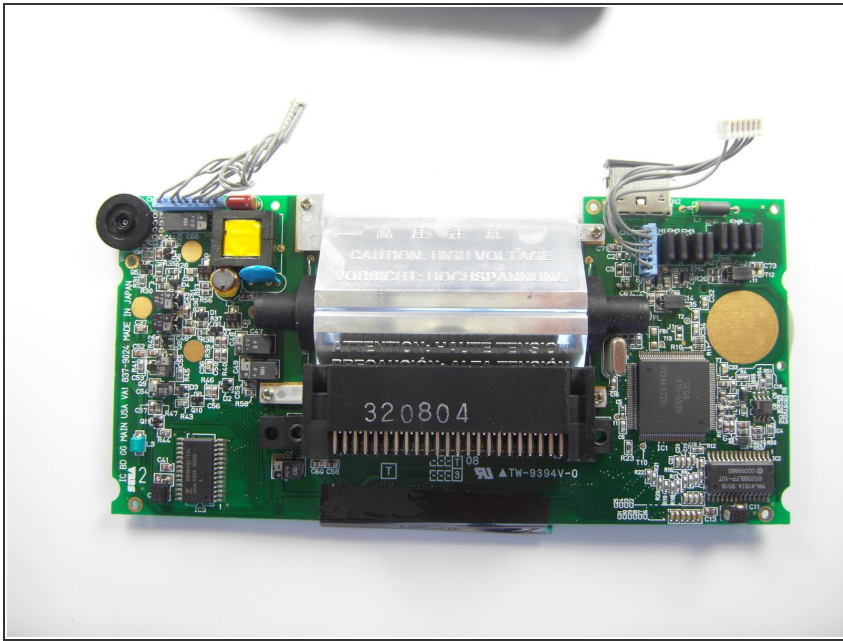
- Unscrew all the marked screws.

Step 8



- Slide the logic board out from under the circular black fastener at the top-left corner of the case.

Step 9



- Place the logic board on a flat surface.

To reassemble your device, follow these instructions in reverse order.