



Sega Game Gear TV Tuner Disassembly

This guide will show you how to fully disassemble your Sega Game Gear TV Tuner for modification or repair

Written By: Navy Vet 2015



INTRODUCTION

Although the Sega Game Gear TV Tuner is long outdated, it's still a pretty cool retro handheld console attachment. In the 90's, before the era of digital television, all you needed was a Game Gear with Tuner attached and you had your very first handheld console with the ability to "stream" video. With a A/V input built in you can still use it, with HD antenna attached, to watch television or even do some outrageously silly stuff like play Xbox 1/PS4 using your Sega Game Gear as a TV. Just remember to bring batteries.



TOOLS:

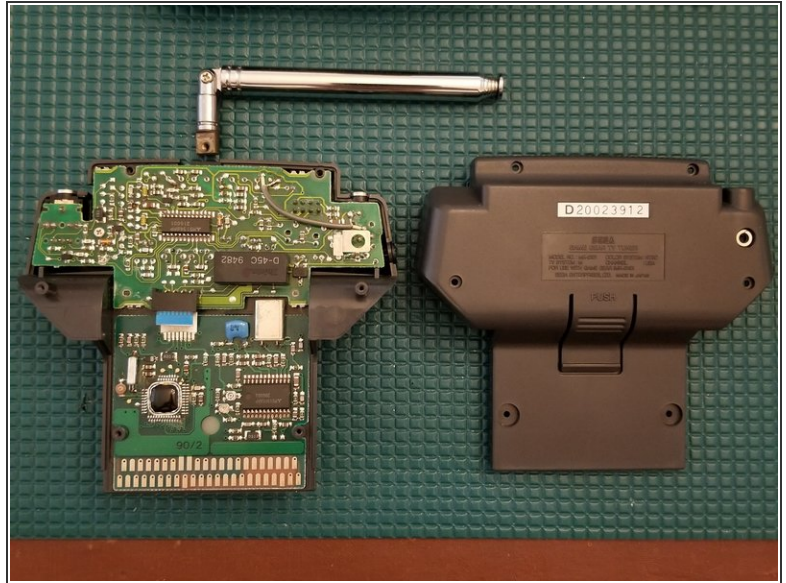
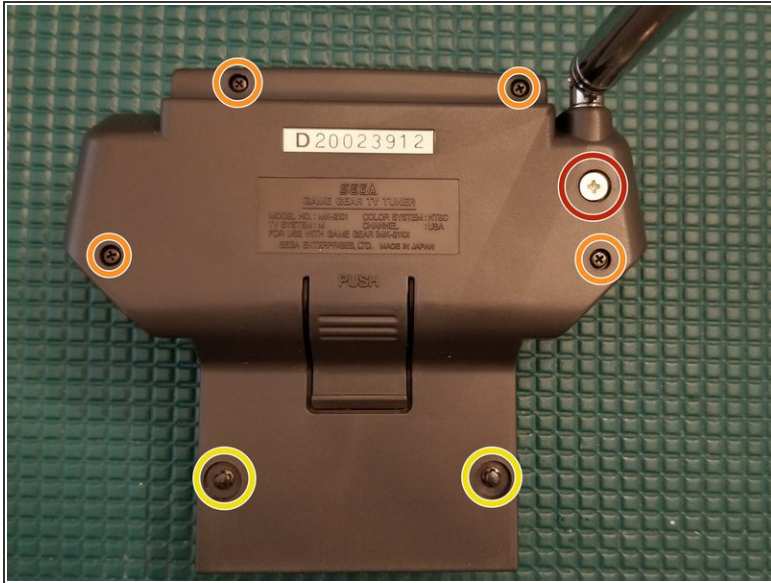
- [Gamebit 3.8mm](#) (1)
- [Phillips #0 Screwdriver](#) (1)
- [Phillips #1 Screwdriver](#) (1)
- [Needle Nose Tweezers](#) (1)



PARTS:

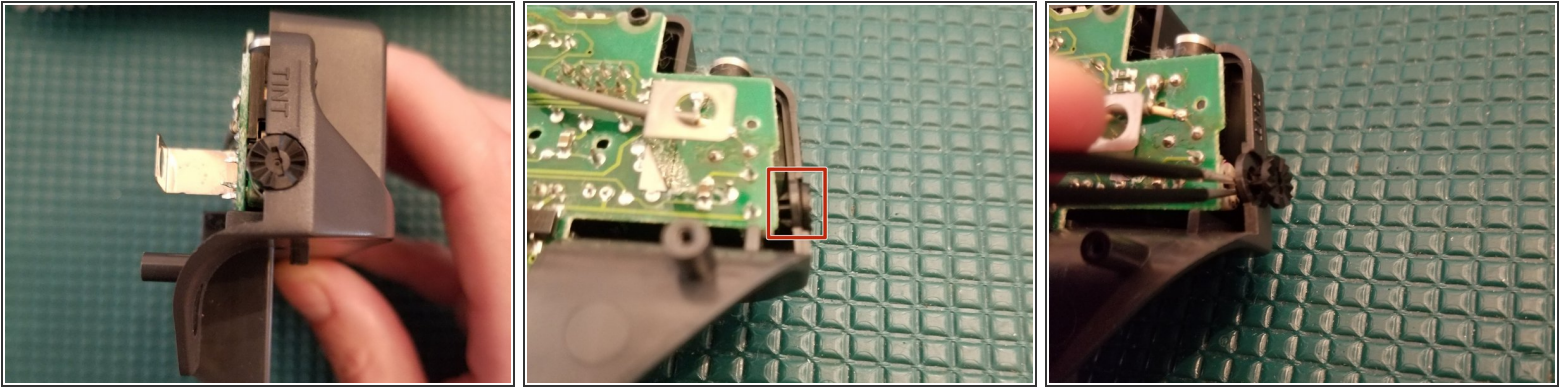
- <https://www.ebay.com/itm/283582023252>
[CAPACITOR KITS](#) Click view and copy and paste link (1)

Step 1 — Remove Housing Screws



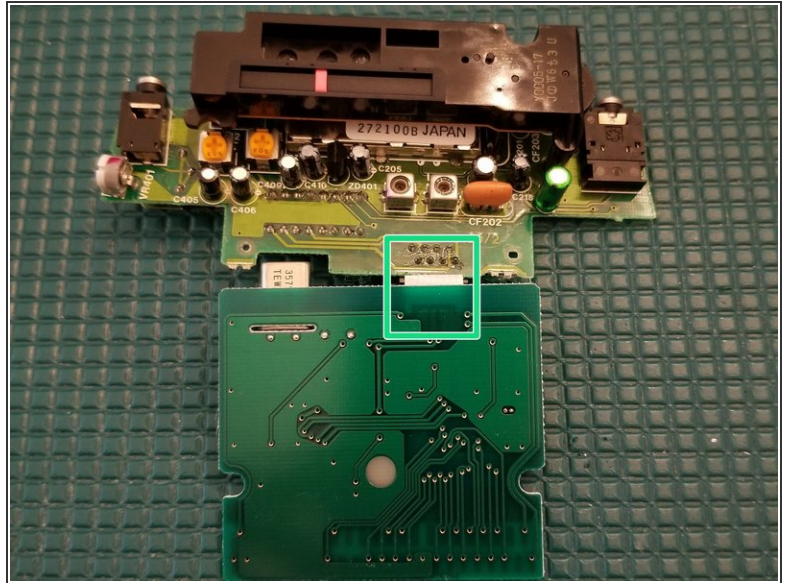
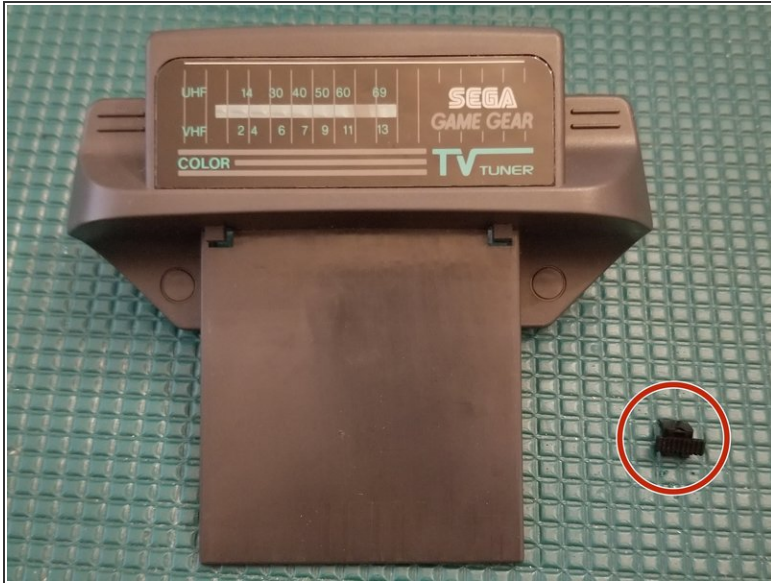
- Remove PH1 screw and lift up on the antenna to remove it
- ⓘ This can be done with a PH0 screwdriver but I prefer not to risk stripping the screw
- Remove 4 PH0 screws
- Remove 2 3.8mm gamebit screws
- Lift rear tuner shell away from unit

Step 2 — Remove Tint Wheel



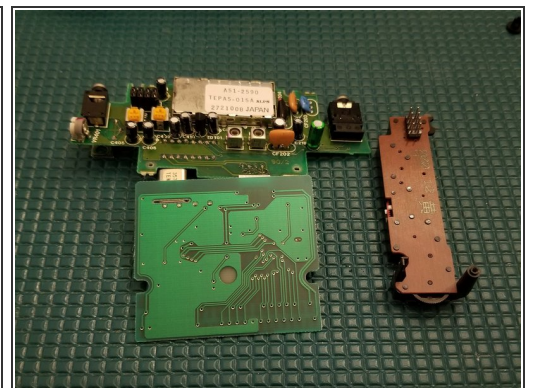
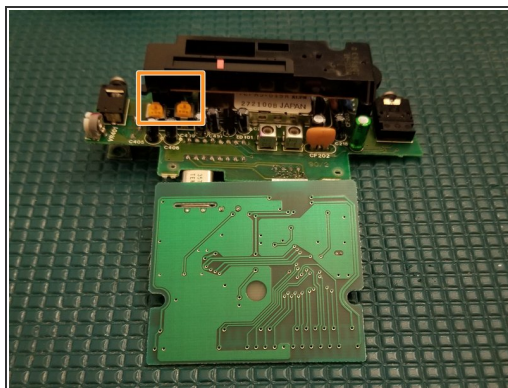
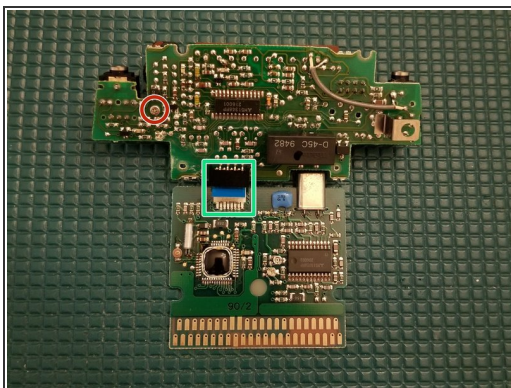
- ⓘ Before we can remove the motherboard the tint wheel needs to be removed
 - A peek on the inside reveals 2 small retaining clips. Simply apply some pressure on the clips with a needle nose tweezer
- ⓘ When reinstalling the tint wheel simply align the retaining clips with the holes and press back into place
 - Remove the motherboard from the unit

Step 3 — Remove PCBs



- i When removing the front shell be careful not to lose the frequency switch button located on top of the device
- If it makes your repair easier you can separate the two PCBs by gently pulling the ribbon out of its connector. This is a friction fit cable

Step 4 — Remove Tuning Dial Assembly



- Flip the PCBs over with the back side facing you.
- Remove 1 PH0 screw
- Flip the board over again and gently pull the tuning dial assembly out of the pin header socket

To reassemble your device, follow these instructions in reverse order.