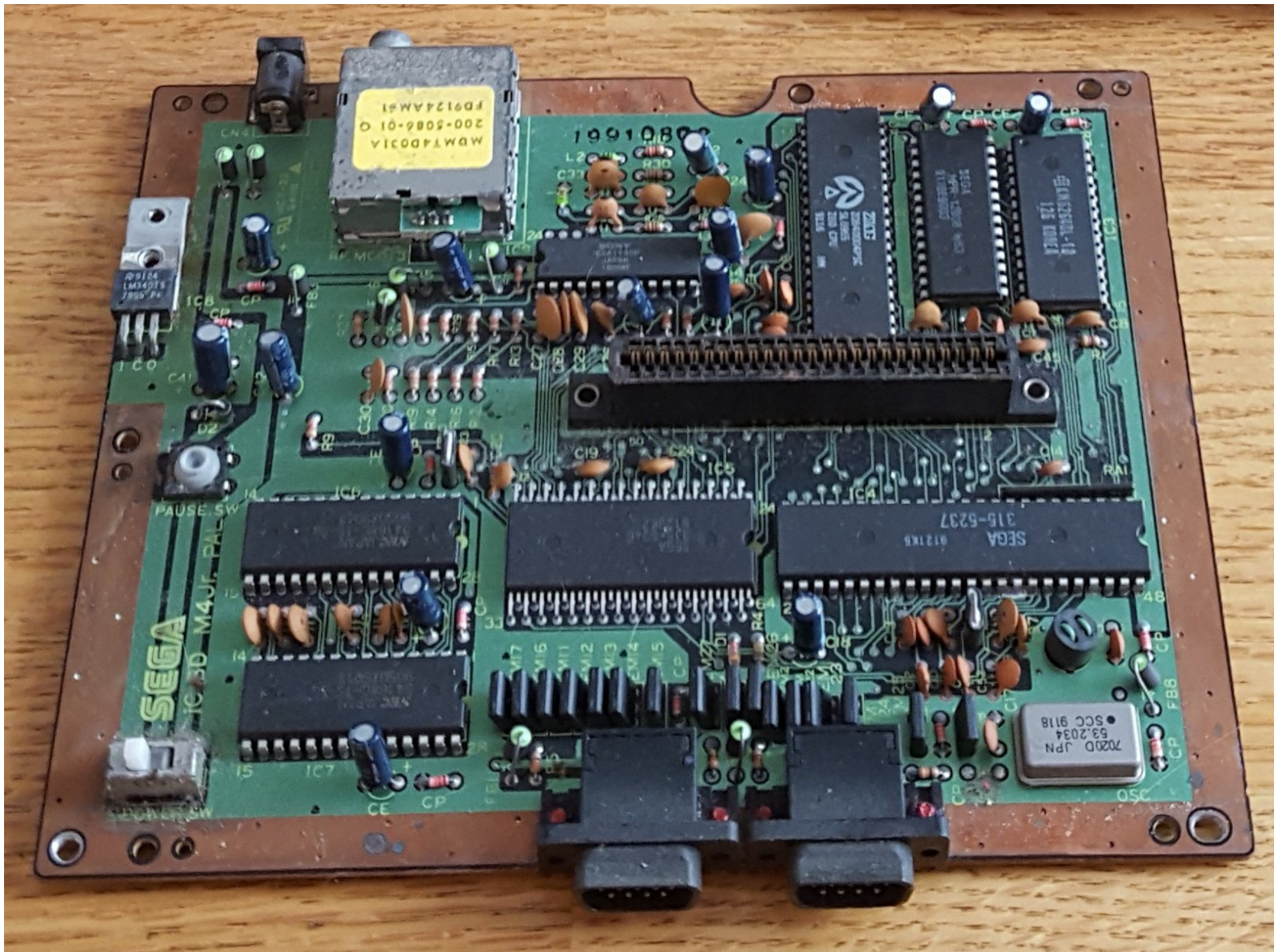




Sega Master System II Motherboard Replacement

In this guide i'll show you how to disassemble the motherboard of the Sega Master System II

Written By: Arjan Kuiper



INTRODUCTION

In this guide i'll show you how to disassemble the motherboard of the Sega Master System II



TOOLS:

- [Phillips #1 Screwdriver](#) (1)
-

Step 1 — Outer Case



- Flip the console on it's back and unscrew the 5 screws marked on this photo.

Step 2



- Once you've unscrewed those 5 screws, flip the console upright again.

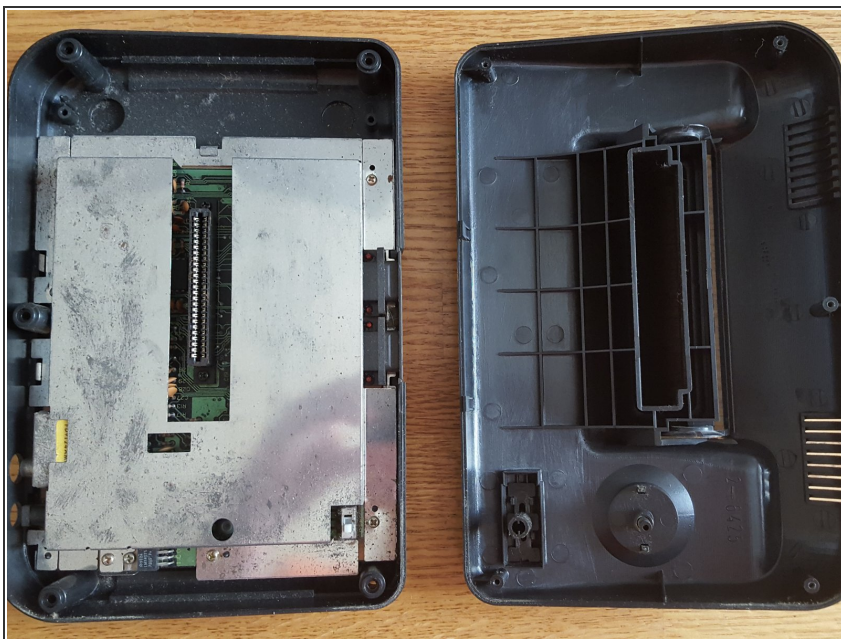
Step 3



- Once the console is upright, first gently pull the rear of the top up.
- After the top is at an angle, gently remove it by pulling upwards.

⚠ Note: Be very careful! The top has 2 tabs connecting it with the bottom half, those are in the vicinity of the 2 controller ports! (marked yellow)

Step 4



- Once the 2 halves are separated, it should look something like this.

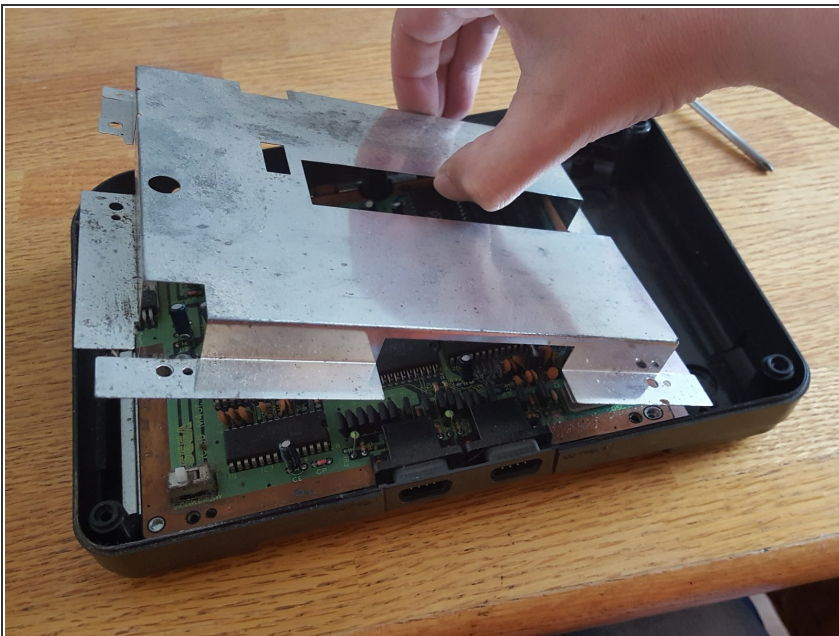
Step 5 — Motherboard



- Next step is the removal of the RF shield
- There are 7 screws in total, please unscrew those.
- The blue marked screw is shorter than the other 6 screws, this screw has to be put back in the exact same location during reassembly.

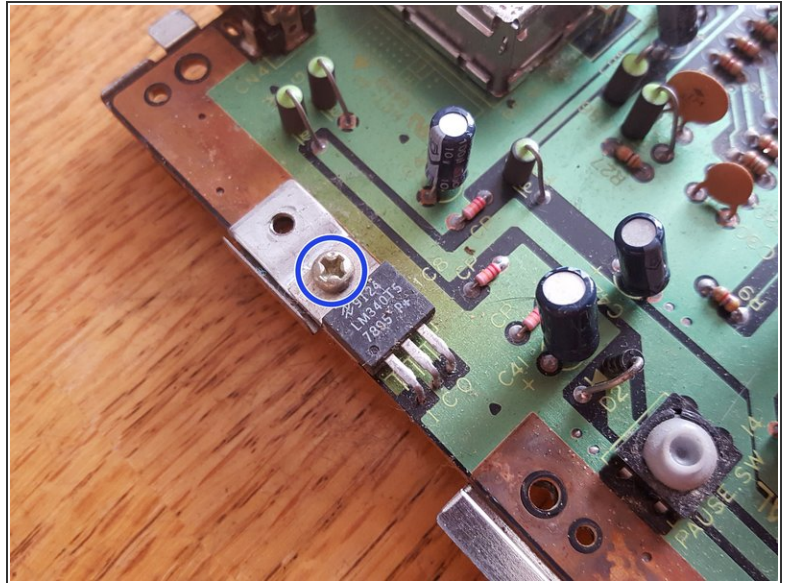
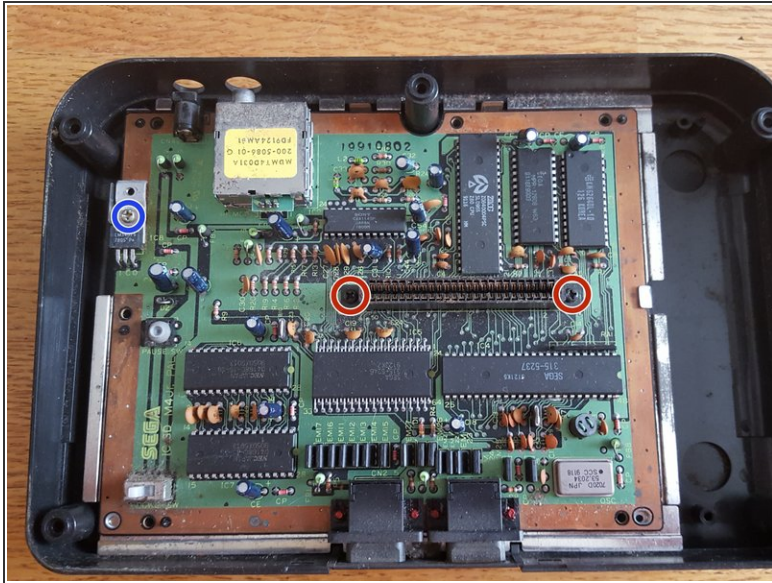
⚠ Note: Tab marked in yellow!

Step 6



- Carefully lift the RF shield up, left side first.
- See note previous step.

Step 7



- Now we have a complete view of the motherboard, thus coming to the last step.
- For this step you only need to remove 3 remaining screws.
- 2 screws on the connector.
- There's 1 shorter screw as previously with the RF shield. This small screw keeps the voltage regulator in place.

Step 8



- When you've disassembled everything, it should look like this.
- ⓘ Once you've got the replacement board, just follow this guide in reverse order,

Om het apparaat weer te monteren, volg je deze instructies in omgekeerde volgorde.