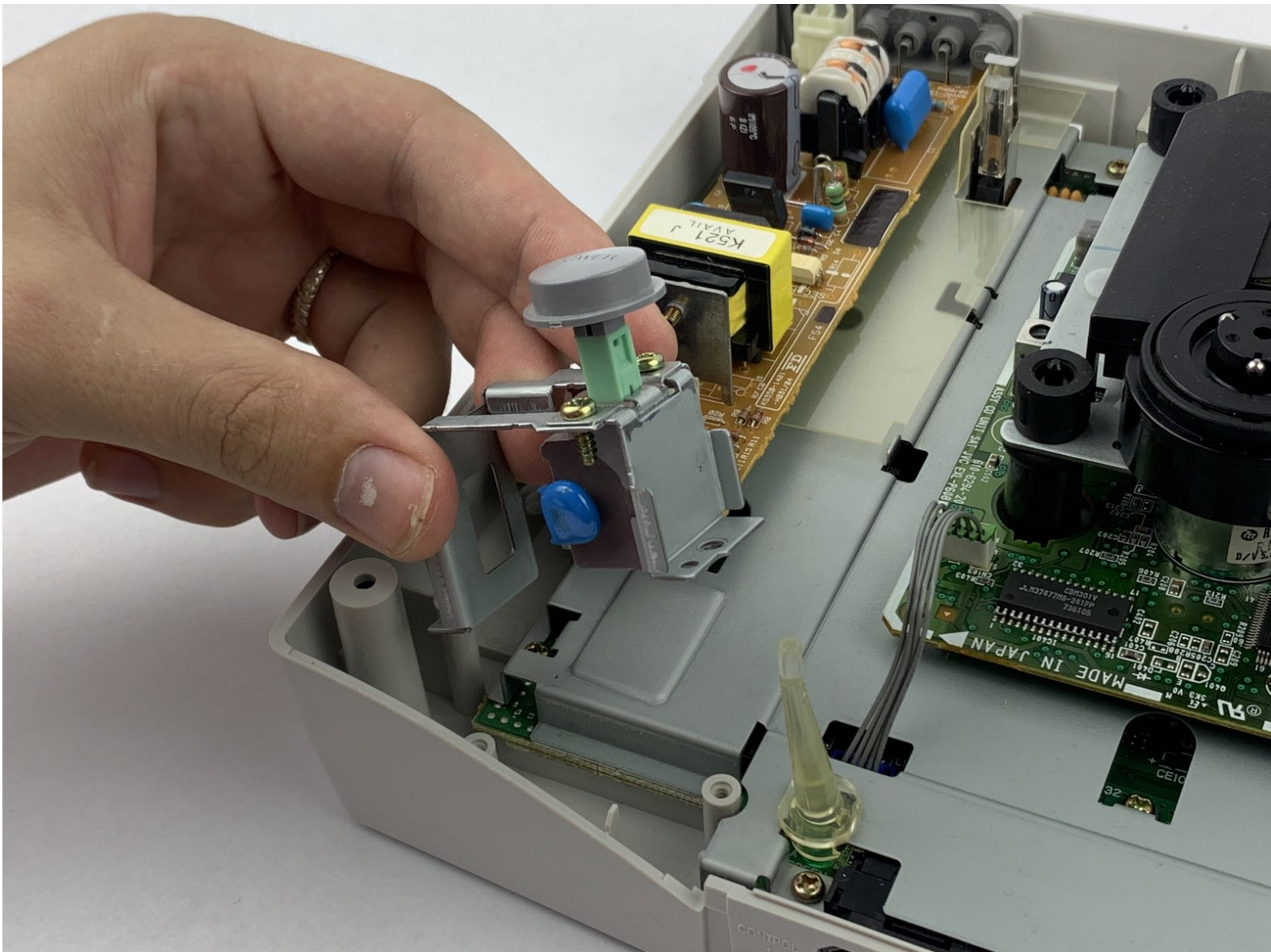




Sega Saturn Power Button Replacement

This guide will assist you in replacing the power button of a Sega Saturn.

Written By: Matthew Russell



INTRODUCTION

Follow this guide if you want to replace the power button on your Sega Saturn. This guide is almost a carbon copy of replacing the Power Supply Board with a few extra steps. So, before you begin disassembling: I advise getting the detailed tools together, as the screws on the Power Supply Board have bad plastic sockets and a Standoff screwdriver really helps get those rigid screws in and out. The toughest part of this guide will be removing the Power Supply Board, as the last thing holding it in place are pins directly from the motherboard. Breaking those can lead to replacing two parts of the Sega Saturn, and it doesn't help that it takes a good amount of force to unplug the pins either... Just take your time on that step and this repair should go fine.



TOOLS:

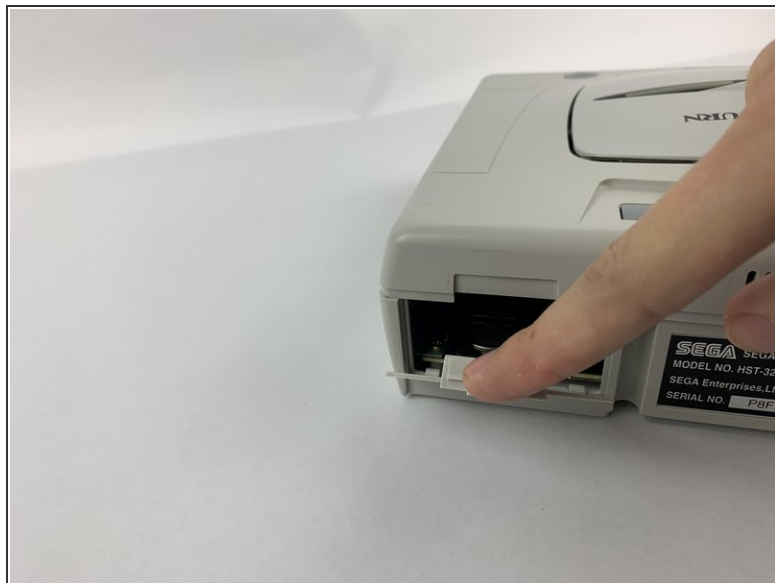
- [ESD Safe Tweezers Blunt Nose](#) (1)
- [iFixit Opening Tools](#) (1)
- [JIS #1](#) (1)
- [Standoff Screwdriver for iPhones](#) (1)



PARTS:

- [CR2032 Lithium Battery](#) (1)

Step 1 — Battery



- Press on the plastic lever on the back of the Sega Saturn to pop open the battery slot.

Step 2



- Push up the edge of the battery with the iFixit opening tool to get the battery out of its socket.

Step 3



- Use the ESD safe tweezers to pull the battery out of its slot.

Step 4 — Case



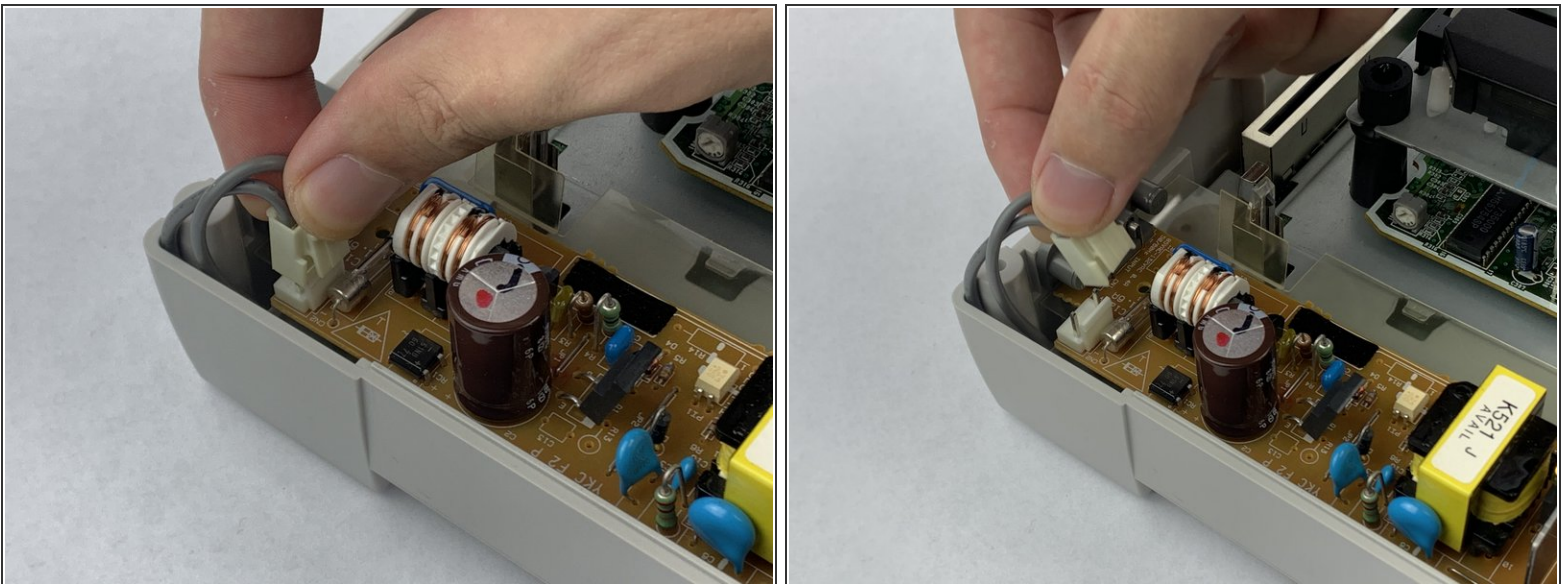
- Remove the five black 13.5mm JIS#1 screws on the bottom of the device. One might be hidden by a sticker.

Step 5



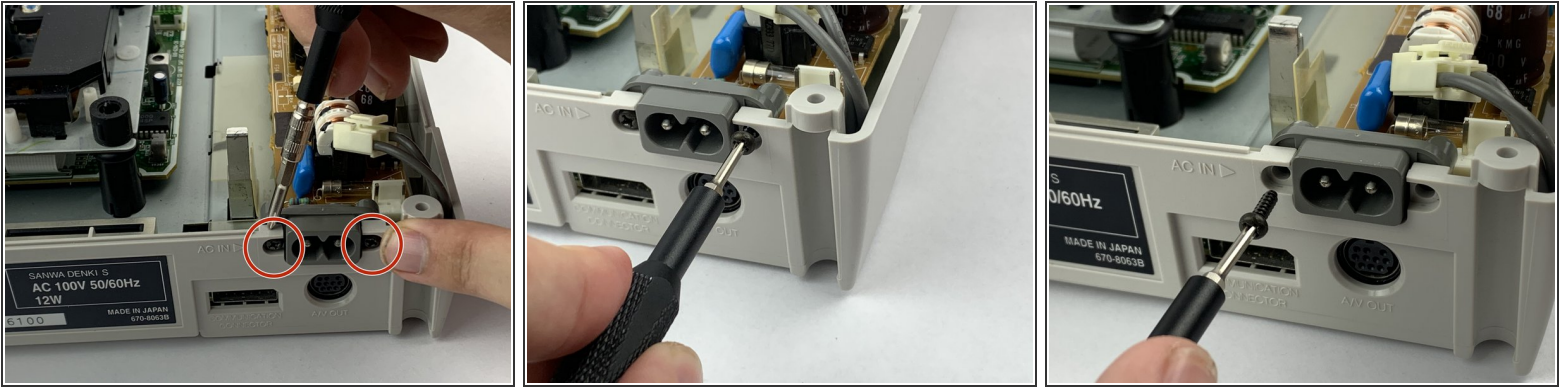
- Flip the device over so it rests right side up.
- Lift gently across the seam of the Sega Saturn. If parts get stuck, a light shake or prying with the iFixit opening tool should free it up. Do not use any brute force, as this can damage the case so it doesn't close again.

Step 6 — Power Supply



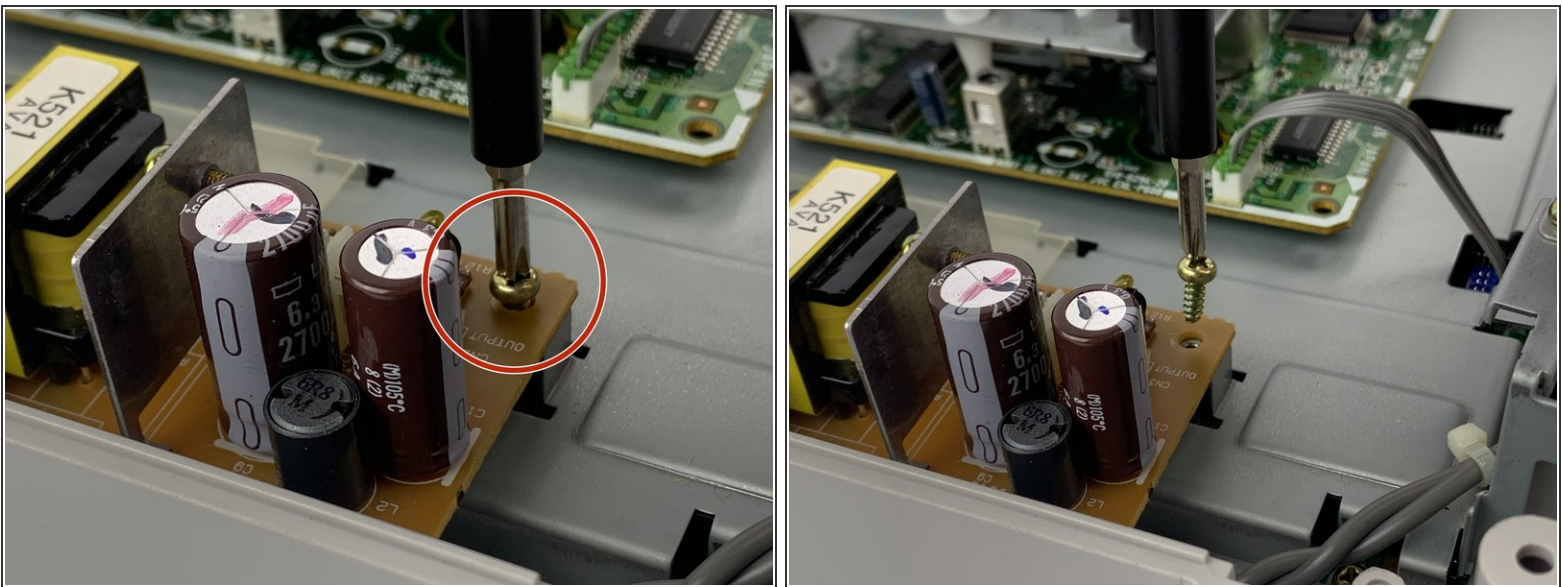
- Unplug the power button plug on the power supply board. Use the iFixit opening tool if necessary.

Step 7



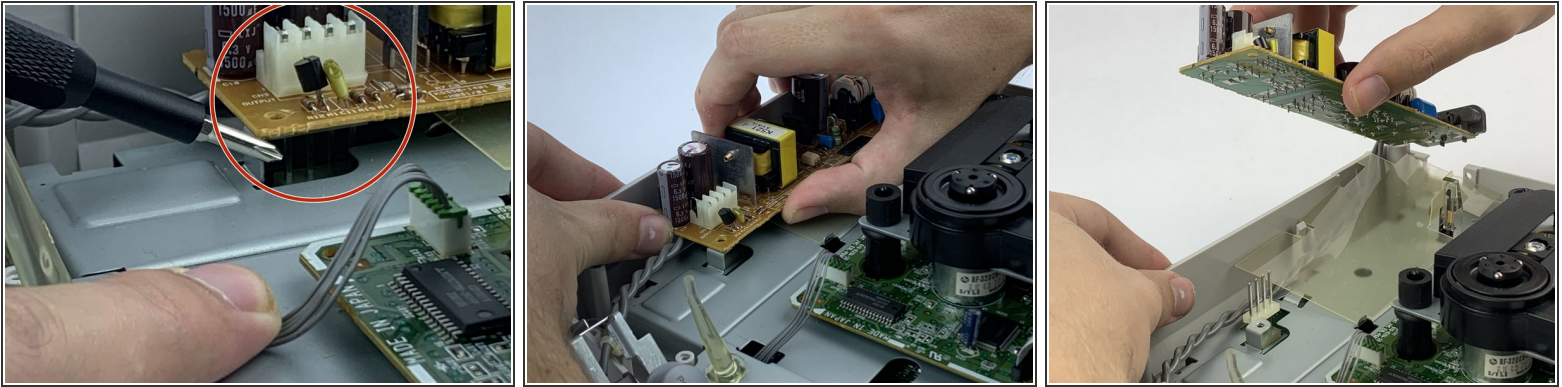
- Remove the two black 11.4mm standoff screws on the back of the Sega Saturn holding the power socket in place. These screws are tight and easily stripped, so it's suggested to use a standoff screw head.

Step 8



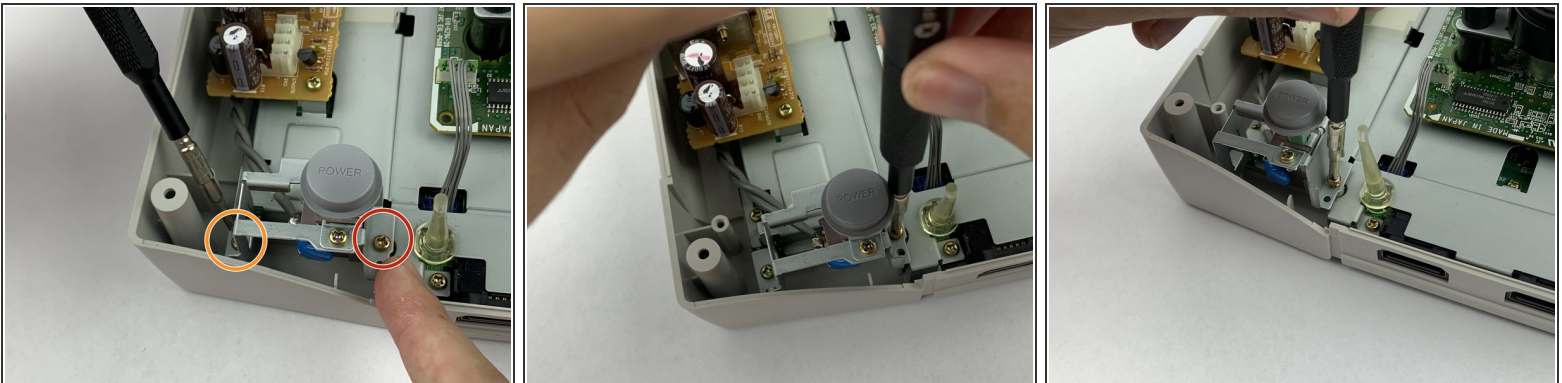
- Remove the metallic 12.3mm JIS#1 screw holding down the power supply board.

Step 9



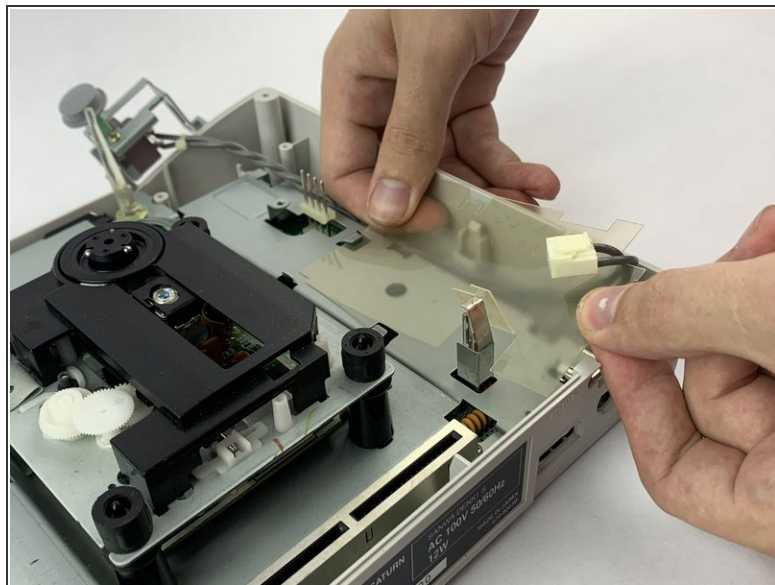
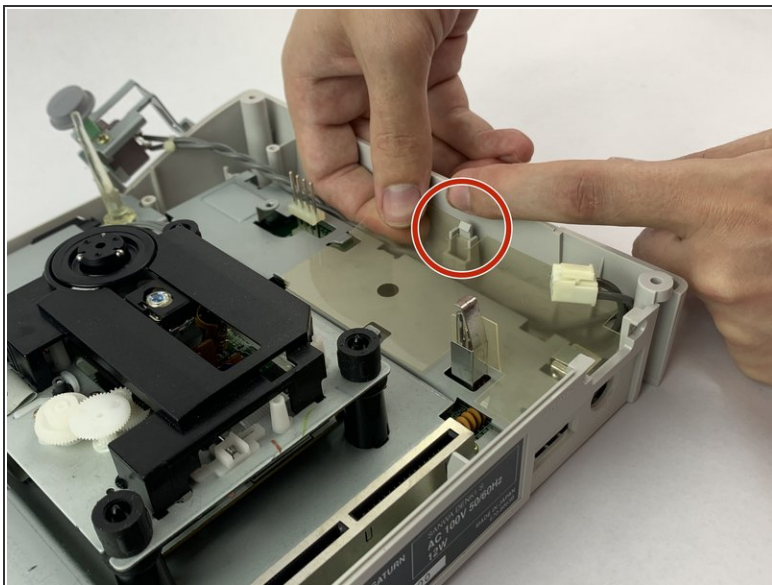
- Lift the power supply board out of its socket, minding the pins that connect it to the motherboard. Some force will be required, but be careful when lifting or shaking the power supply board out.

Step 10 — Power Button



- Remove the metallic 13.7mm JIS#1 screw on the right of the Power Button.
- Remove the metallic 12.4mm JIS#1 screw on the left of the Power Button.

Step 11



- Push the plastic resting tray's pin located here.
- Remove the plastic resting tray to free the wire between the power supply board and the button.
- Remove the power button when the wire is free.

To reassemble your device, follow these instructions in reverse order.