



Self-Balancing Board Remote control Bluetooth Replacement

Follow this guide to install a Bluetooth remote control on the hoverboard that does not own it

Written By: Smilzo





TOOLS:

- [Cacciavite con testa a croce n. 1](#) (1)
- [New Item](#) (1)



PARTS:

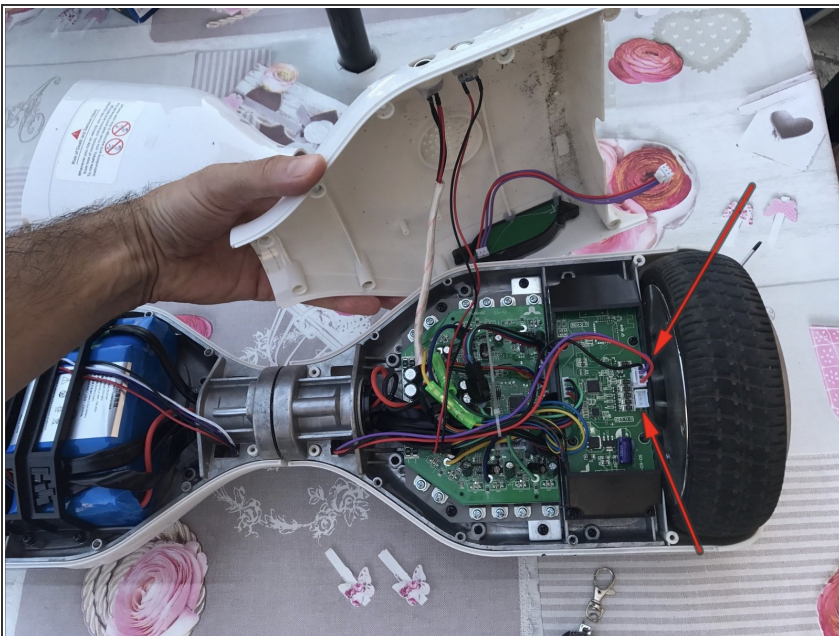
- [New Item](#) (1)

Step 1 — Remote Control Bluetooth



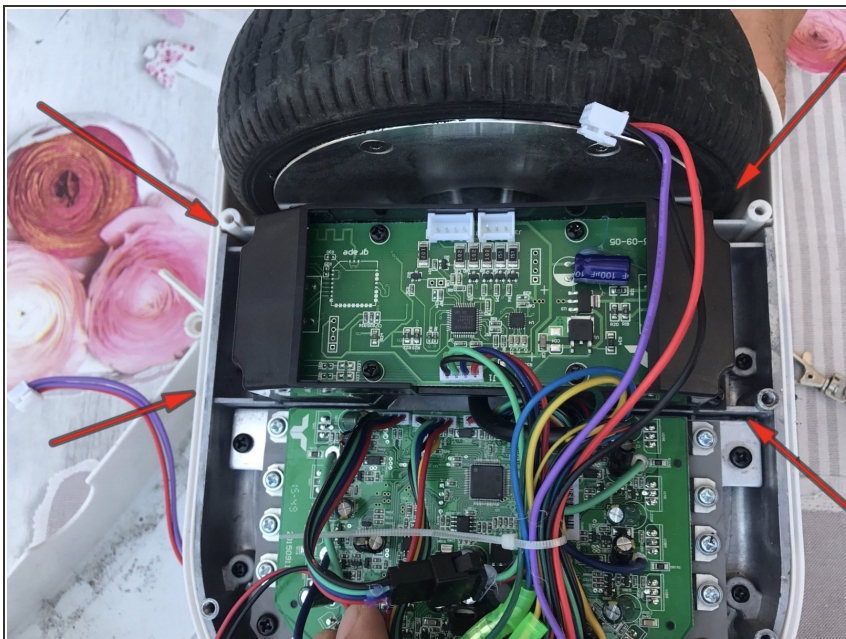
- Remove 10 screws with a cross-head screwdriver to access a part of the hoverboard.
- The electronic boards are mirrored on both sides, so you can choose one of the 2 by evaluating which of these are available for Bluetooth setup

Step 2



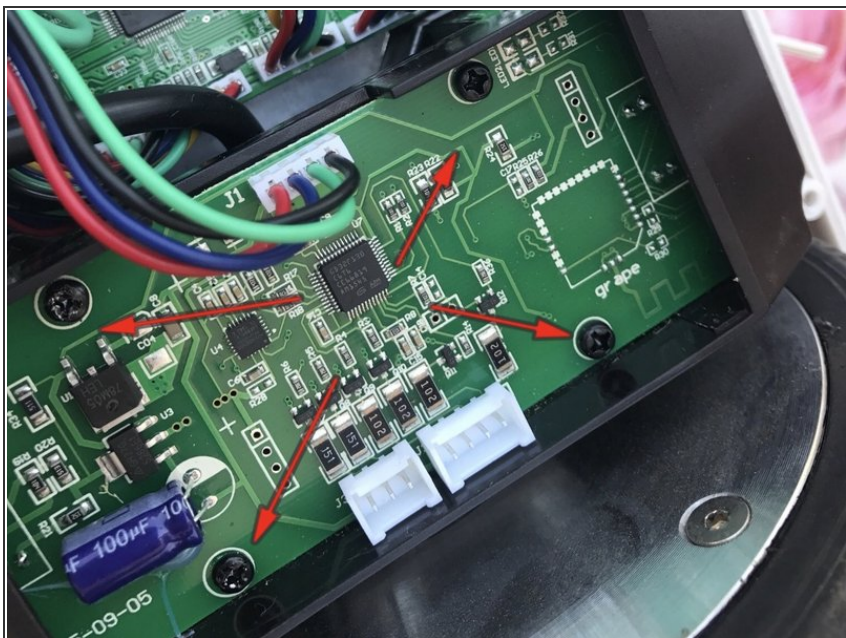
- unhook the lighting and canbus cables to remove the cover

Step 3



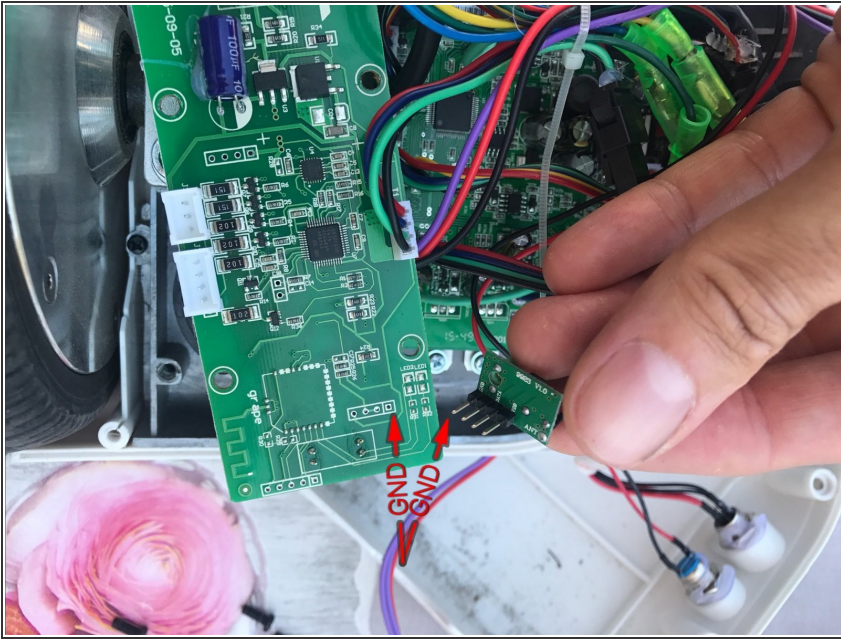
- Remove the 4 screws that hold the electronic card holder

Step 4



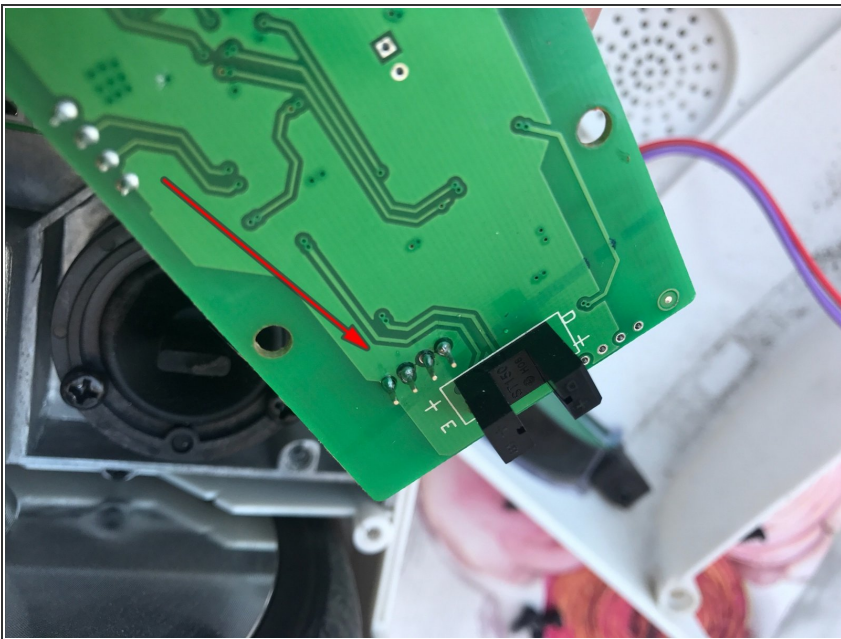
- Rimuovere le 4 viti che fissano la scheda al supporto

Step 5



- Correct position for welding the Bluetooth card.

Step 6



- Using a tin soldering station, secure the 4 pins of the Bluetooth card on the hoverboard board
- Before soldering the boards I recommend checking the functionality of the Bluetooth card simply by inserting the pins that is sufficient

To reassemble your device, Follow these instructions in reverse order.