



# Set-Top Box Numb Button Replacement

In this guide we will show you how to replace the buttons of your set top box!

Written By: Yvo Kipping



## INTRODUCTION

The box has a dysfunctioning pushbutton. This repairment guide shows a step by step guideline how to replace the button. By following the steps the user will apply the right proceedings and receive tips how to make the steps easier. By clicking the link shown below, the guide will be presented.



### TOOLS:

- [Phillips Screwdriver](#) (1)
- [Portable Soldering Iron](#) (1)




### PARTS:

- [Screw 10mm lenght](#) (3)
- [Screw 7 mm lenght](#) (2)

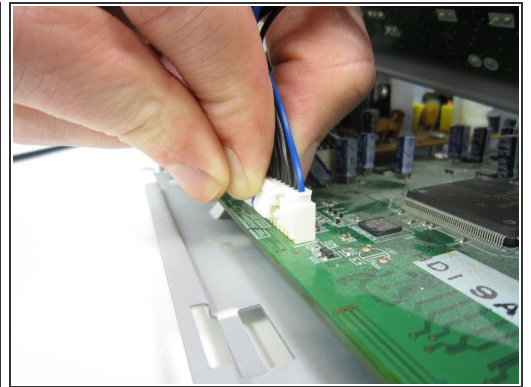
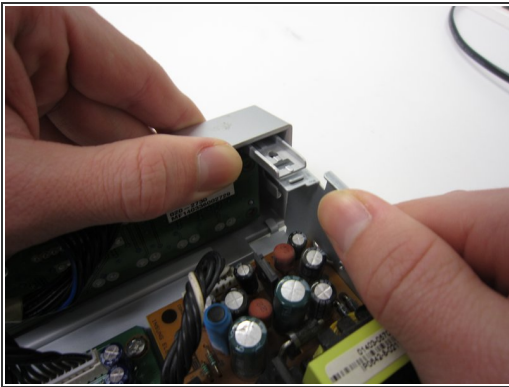
## Step 1 — Numb Button




 Make sure the box is not plugged in before starting!

- Remove the 5 screws holding the outer casing in place: 3 can be found on the back and 1 on either side of the box.
- Slide the casing backwards.

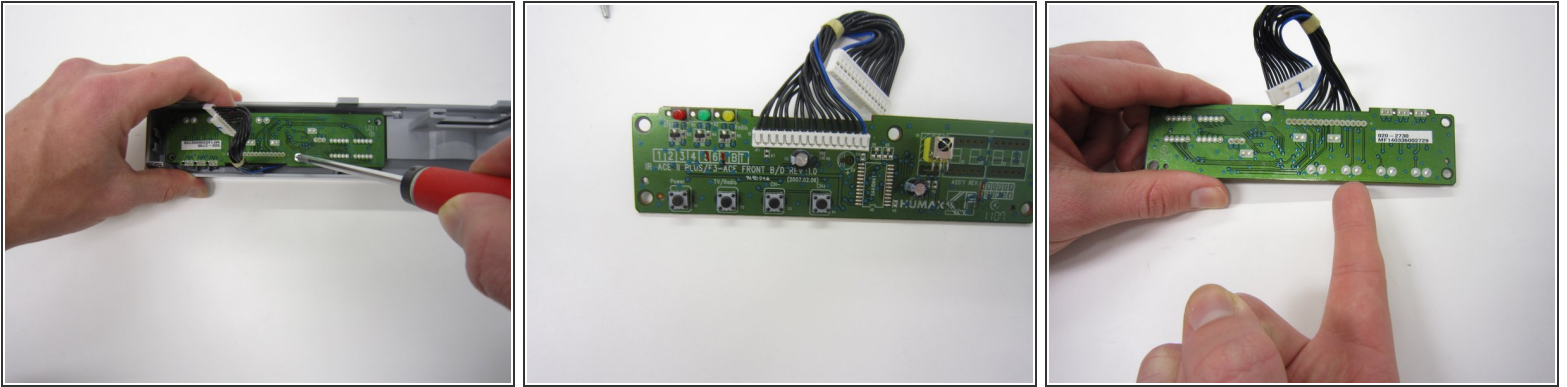
## Step 2



- Disconnect the front of the by lifting the 2 connectors . You can also apply extra pressure on the front from below.
- Tilt the front forward and remove it.
- Remove the connector by pressing the upper part of it and carefully pulling it.

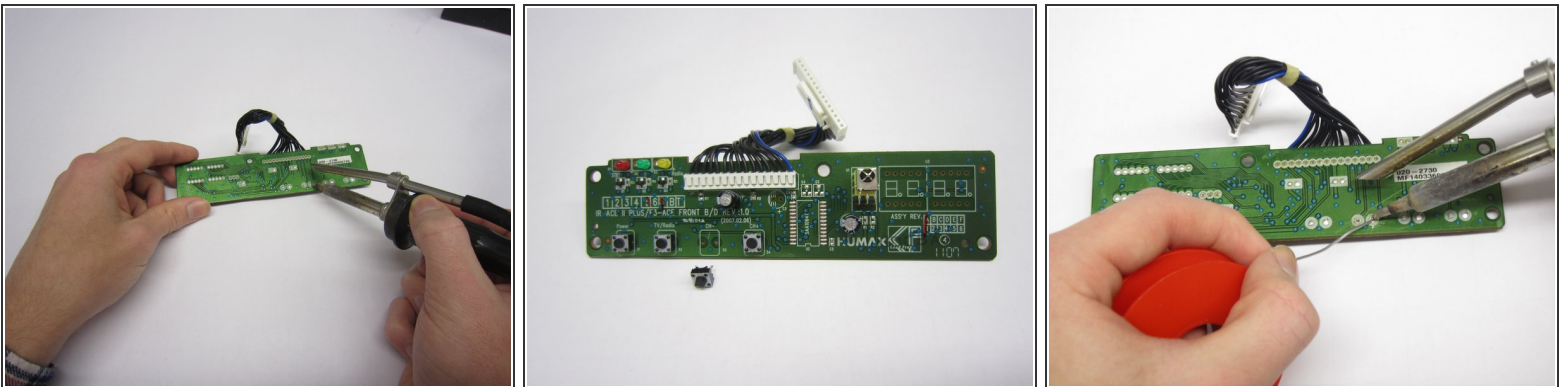
 Be carefull not to damage the cables and circuit board!

## Step 3



- Undo the 4 screws of the front panel.
- Locate your broken button. For instance, the third button from the left (front view), is the CH-button.

## Step 4



- Unsolder the push button. You can push it out or maybe use some pliers.
- Remove the old button and insert the new one.
- Solder the new push button on.
- Check this link for help [How To Solder and Desolder Connections](#)

To reassemble your device, follow these instructions in reverse order.