



# Shark Cordless Pet Perfect Battery Replacement

Replacing the Shark Cordless Pet Perfect Battery.

Written By: Ashley Calkins





## INTRODUCTION

If you are having a problem with your device's Battery, Here is a step by step guide to replace a dead or faulty Battery.



### TOOLS:

- [Spudger](#) (1)
- [Phillips #2 Screwdriver](#) (1)



### PARTS:

- [Shark Pet Perfect Replacement Battery](#) (1)



## Step 1 — Battery



- Remove the Dust Cap Container then remove the 7.5mm screw (with the PH2 Bit) from the battery cover.
- Using a black spudger pry open the cover, and remove the cover plate.

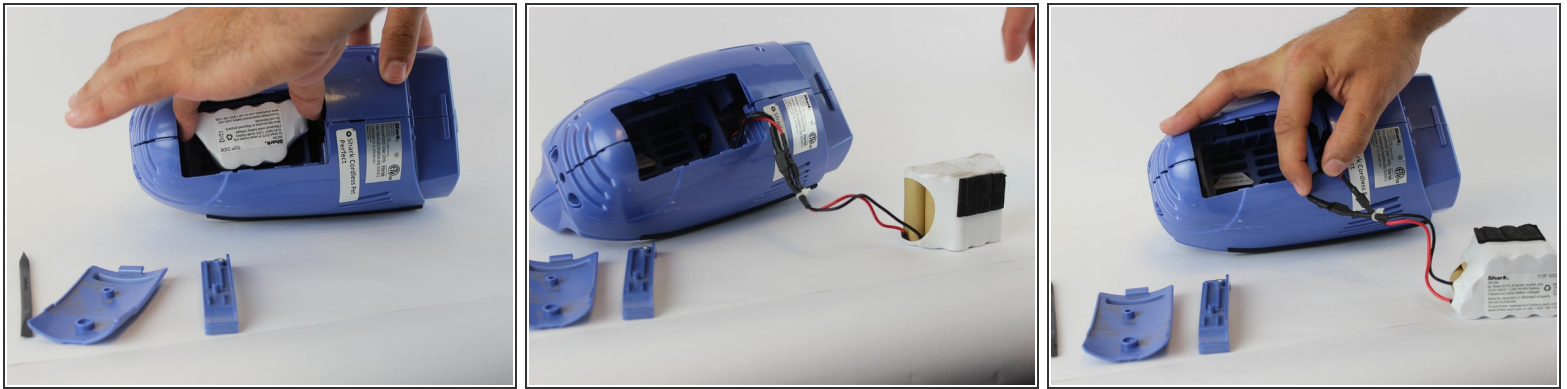
## Step 2



- Once the battery cover is removed slide the battery mount upwards and pull it out.



## Step 3



- Pull out the battery and then disconnect the battery at the quick disconnects.

To reassemble your device, follow these instructions in reverse order.