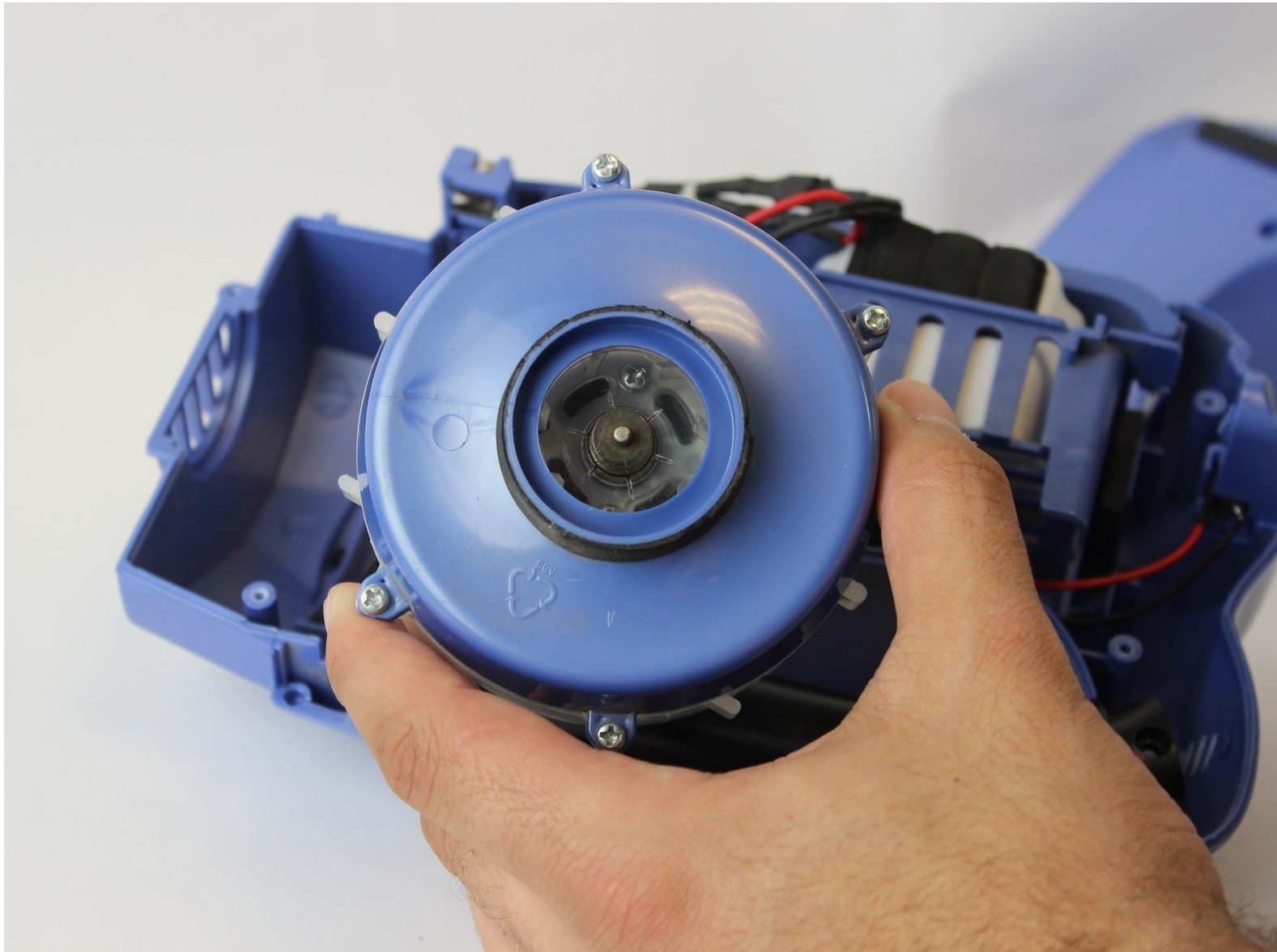




Shark Cordless Pet Perfect Rear Motor Replacement

Taking apart the rear motor housing to replace the faulty suction motor.

Written By: Ben Dzugen



INTRODUCTION

If you are having a problem with your device's Rear Motor, Here is a Step by step guide to replace a broken or faulty Rear Motor.



TOOLS:

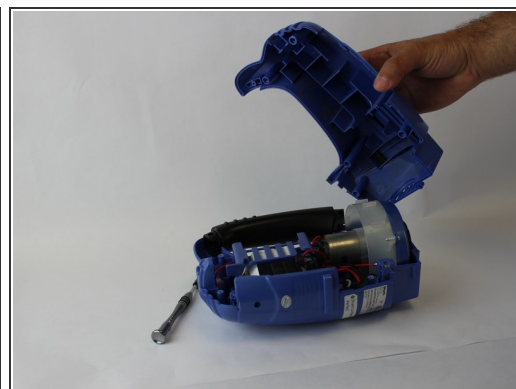
- [Soldering Iron](#) (1)
 - [Phillips #2 Screwdriver](#) (1)
-

Step 1 — Rear Motor



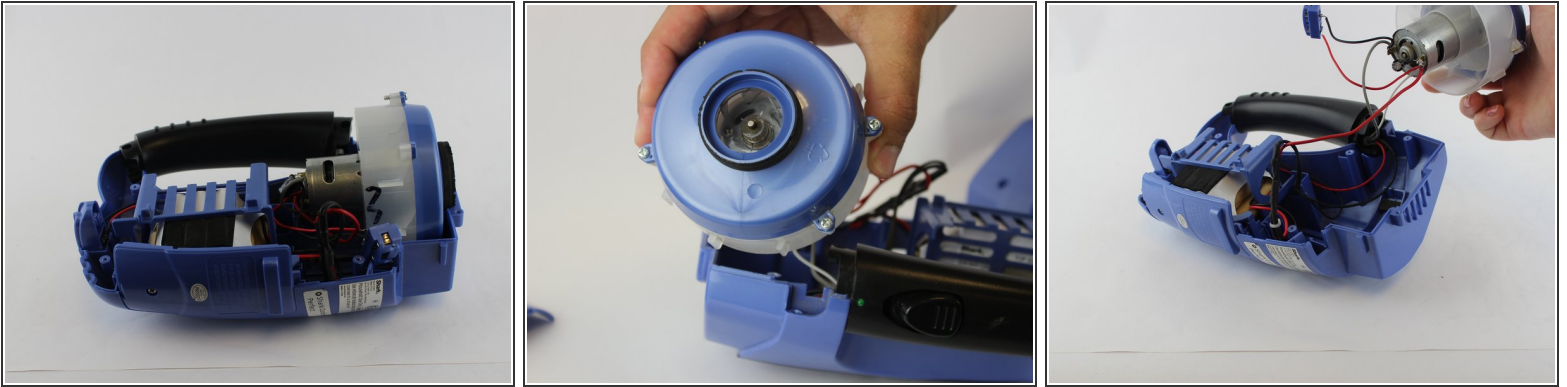
- Remove the Dust Cup Container from the motor housing.

Step 2



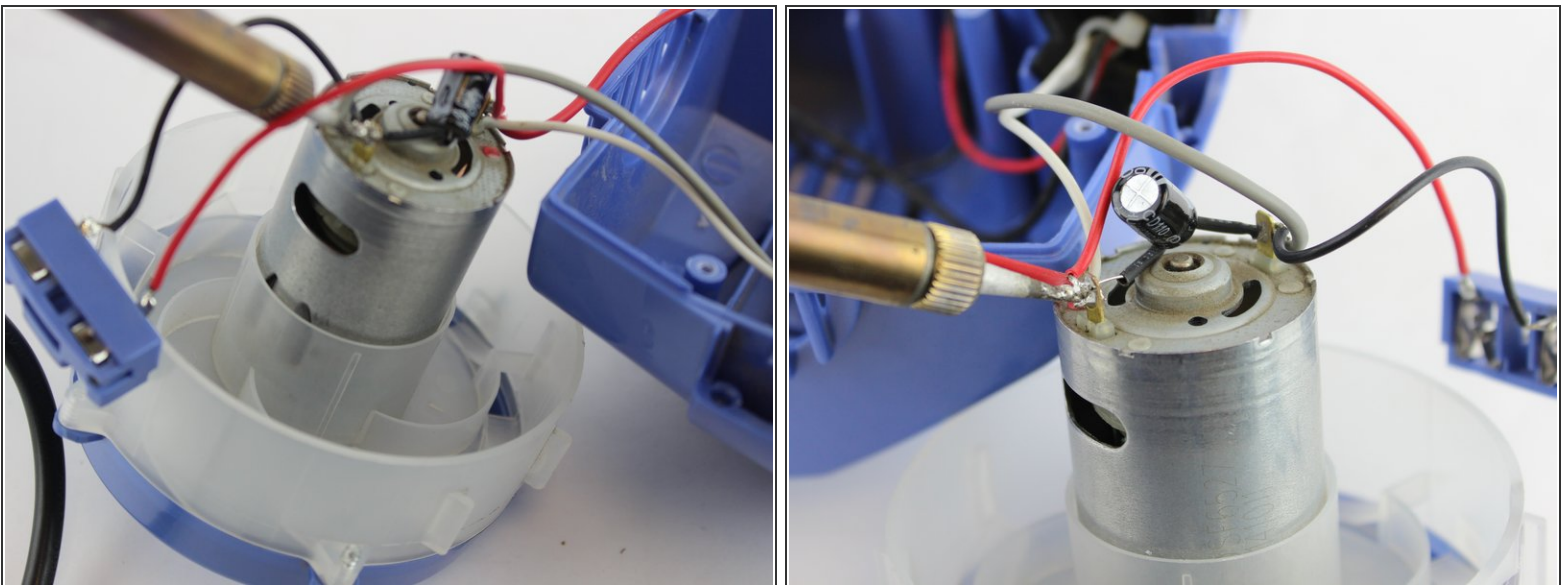
- Remove the five 14mm screws with the PH2 Bit from the motor housing and pull the housing apart.

Step 3



- Pull the motor upward and away from the the housing.

Step 4



- With the soldering tool separate the motor from the gray wire and the black wire.
- Turn the motor to the other side. Then separate the motor from the two red wires, and the white wire.

To reassemble your device, follow these instructions in reverse order.