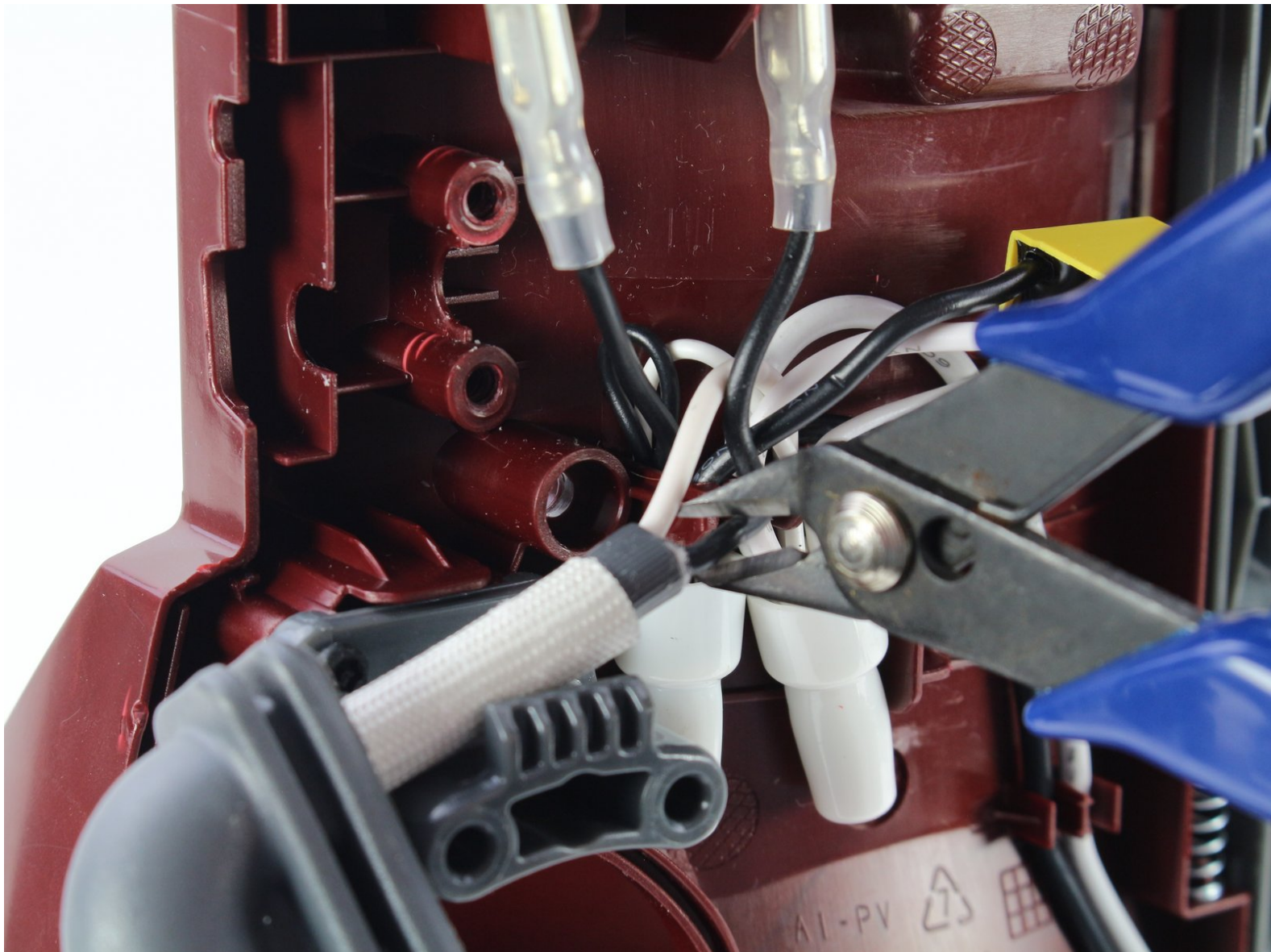




# Shark DuoClean Powered Lift-Away Speed Power Cable/Connector Replacement

How to replace the power cable/connector for the Shark DuoClean Powered Lift-Away Speed.

Written By: Catie Halvorsen



## INTRODUCTION

If your vacuum will not turn on and the power cable/connector is faulty, use this guide to replace the power cable/connector. You will need wire strippers, wire end caps, and the T10 and T20 Torx Screwdrivers. Reassembly requires rewiring.



### TOOLS:

- [Wire stripper/crimping tool](#) (1)
  - [wire cap](#) (1)
  - [T10 Torx Screwdriver](#) (1)
  - [T20 Torx Screwdriver](#) (1)
-

## Step 1 — External Pieces



- Press the Hose Release button and pull back to detach the hose.

## Step 2



- Press the Wand Release button and pull up on the metal tube to remove the entire hose.

### Step 3



- Press the Lift Away button and pull up on the handle to separate the top of the vacuum from the bottom.

### Step 4



- Pull up on the extra brush pieces to remove them from the vacuum.

## Step 5 — Filter



- Pull up on the Dustbin Release button, and pull up on the handle to detach the dustbin.

## Step 6



- Pull up on the filter tab to remove the large foam filter.

## Step 7



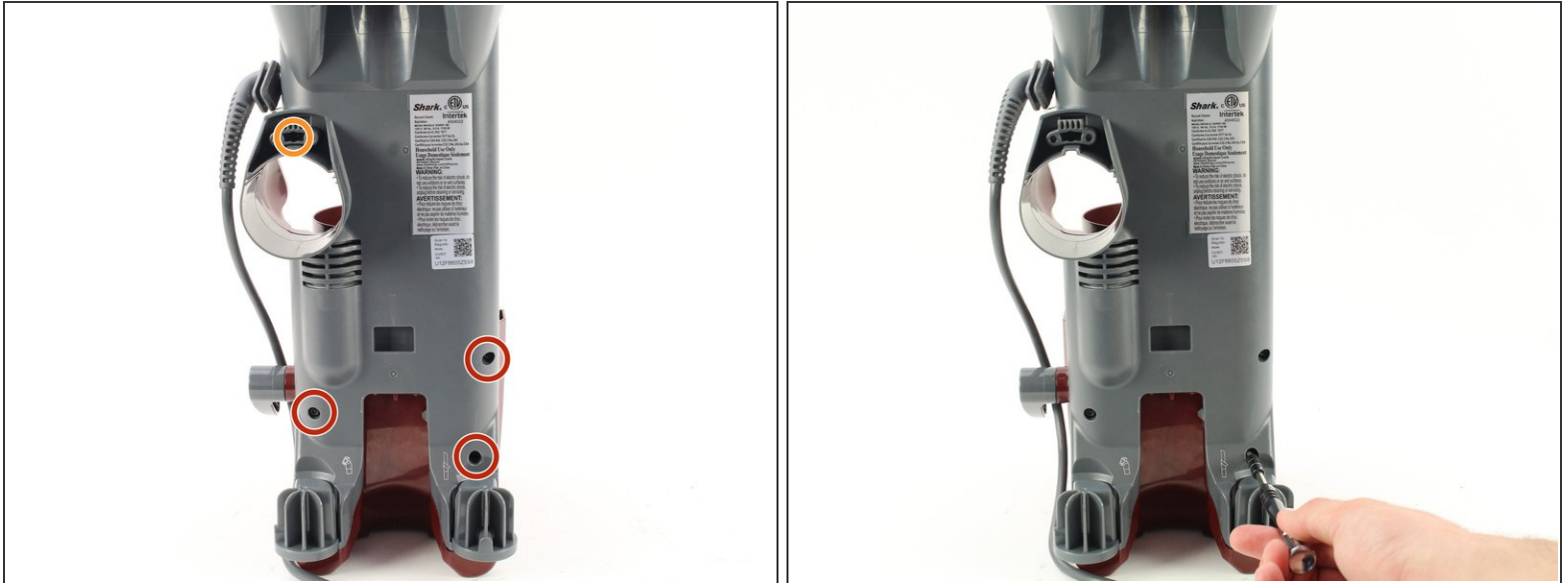
- Pull up on the small tab to remove the filter pad.

## Step 8 — Power Cable/Connector



- Use the T20 screwdriver to remove the two 12 mm screws by turning counterclockwise.
- Use the T20 screwdriver to remove the two 17 mm screws by turning counterclockwise.
- Use the T20 screwdriver to remove the two 14 mm screws by turning counterclockwise.

## Step 9




- Use the T20 screwdriver to remove the three 15 mm screws by turning counterclockwise.
- Use the T10 screwdriver to remove the one 17 mm screw by turning counterclockwise.

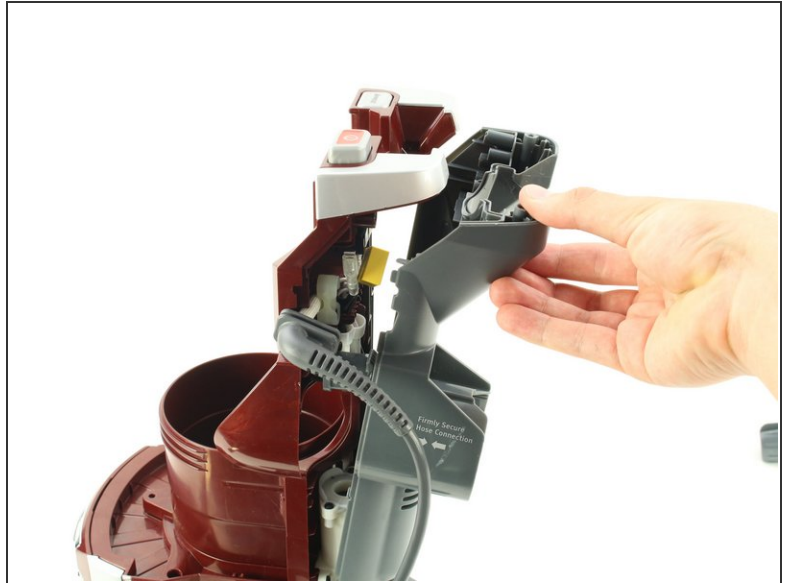
## Step 10



- Use the T20 screwdriver to remove the four 14 mm screws from the bottom of the vacuum by turning counterclockwise.

 The grey plastic cylinders will detach.

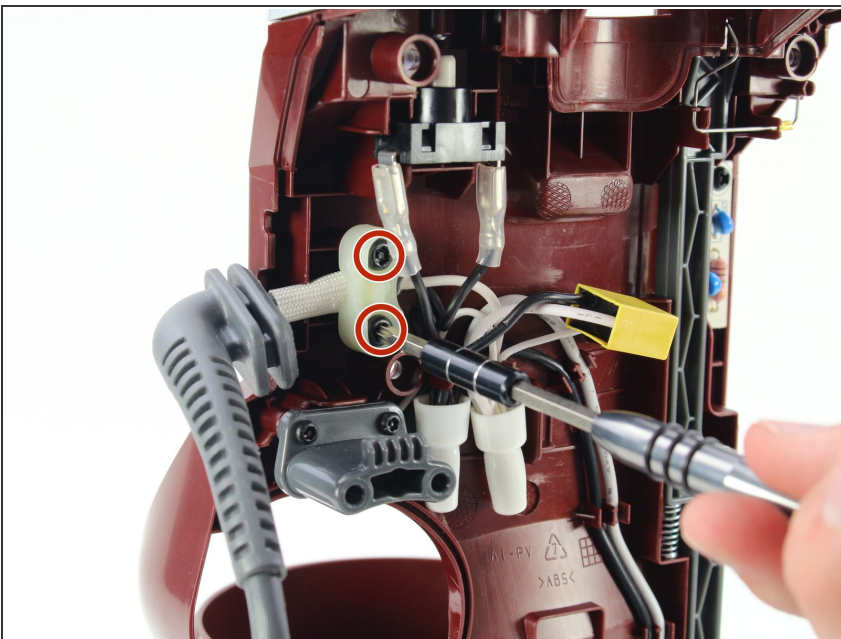
## Step 11



- Use the metal spudger to pry off the back panel.

⚠ Be careful not to break or snap any plastic.

## Step 12



- On the white cap holding the wire, use the T20 screwdriver to remove the two 12 mm screws by turning counter-clockwise .
- Remove the white cap by pulling it off the device.

## Step 13



- Use wire cutters to detach the power cord by cutting the black and white wires.
- ★ For reassembly, you must strip and then rewire the new power cord using wire strippers and end caps. Use [this](#) guide to learn more about stripping wires.

To reassemble your device, you must rewire a new power cord, then follow these instructions in reverse order.