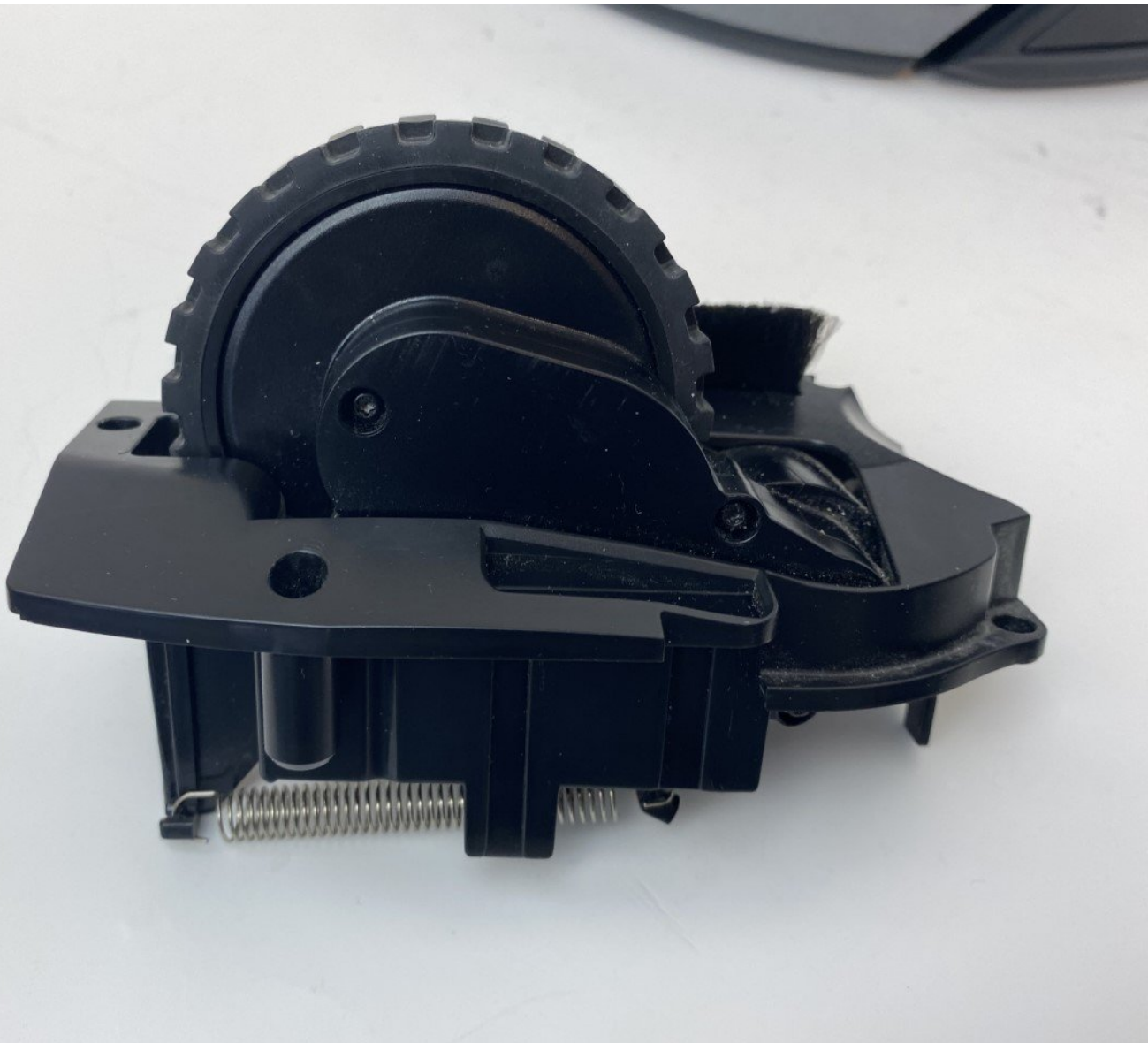




# Shark ION Robot R75 Drive Wheel Assembly Replacement

This guide shows a drive motor assembly replacement for the Shark ION Robot R75, which contains the drive wheel, motor, motor encoder, and basic suspension.

Written By: Andrew Lowy



## INTRODUCTION

The drive motor/wheel assemblies are a vital component to the R75.

the assembly includes:

- a drive motor
- a small gear system
- a drive wheel
- a motor controller
- the R75's suspension system

Each of these components can be replaced individually, however, you will rarely find a single component being sold as a replacement, whereas the complete assembly can be ordered.

You may want to remove the drive assembly in order to replace a failed drive motor or to clean out hair or debris from the drive wheel. If a drive motor has failed, you should notice your robot's ability to move become severely impaired, if not fail entirely.

It is important to occasionally inspect the wheels for any sort of wear and debris build up.



### TOOLS:

- [Phillips #1 Screwdriver](#) (1)
  - [Tweezers](#) (1)
  - [T15 Torx Screwdriver](#) (1)
-

## Step 1 — Battery



- ⓘ Make sure the robot is shut off by pressing the power button on top.
- Flip the R75 over so that the underside is facing up.
- Using a Phillips #1 screwdriver, remove the 4mm screw in the battery cover.
- Remove the battery cover.

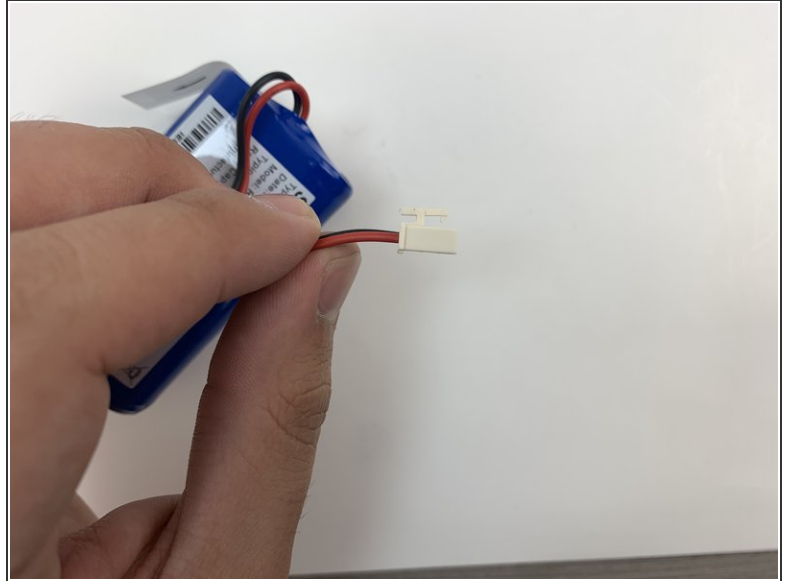
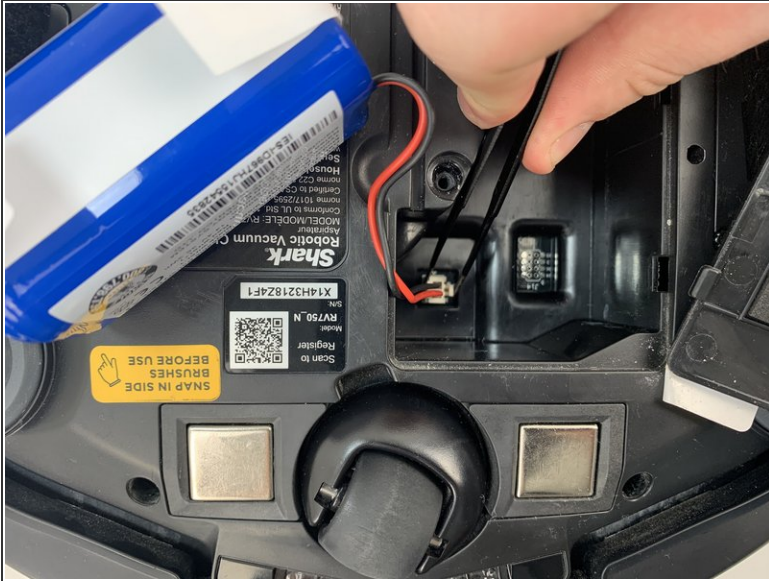
## Step 2




- ⓘ Be careful when removing the battery, as it will still be connected to a wire.
- Slowly pull the white tabs outward to remove the battery.



## Step 3




 Be careful when removing the connector, as the part can break if too much force is used.

- Push down on the tab of the battery connector using a set of tweezers and pull the connector away from the robot to free the wire.
- Remove the battery from the device.

## Step 4 — Drive Wheel Assembly



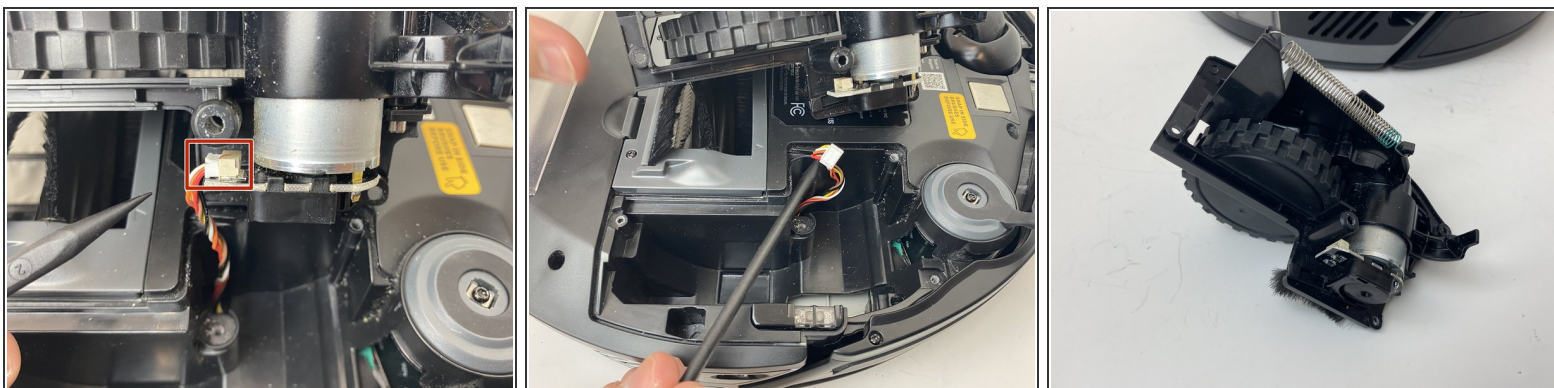
- Flip the R75 to its underside.
- Make sure the R75 is shut off.
-  For extra security, disconnect the battery by following the prerequisite guide.

## Step 5



- Using a Torx T15 screwdriver, remove the five screws from the drive wheel assembly.
  - Carefully lift the drive wheel assembly from the wheel well by gently pulling up on the wheel.
- ⚠ The assembly will still be connected to the motherboard via a cable, so be sure not to pull so hard that the cable rips.

## Step 6



- Flip the wheel assembly over and disconnect the cable connector on its underside.
  - Remove the drive wheel assembly.
- i** Repeat this process for the other side if necessary.

To reassemble your device, follow these instructions in reverse order.