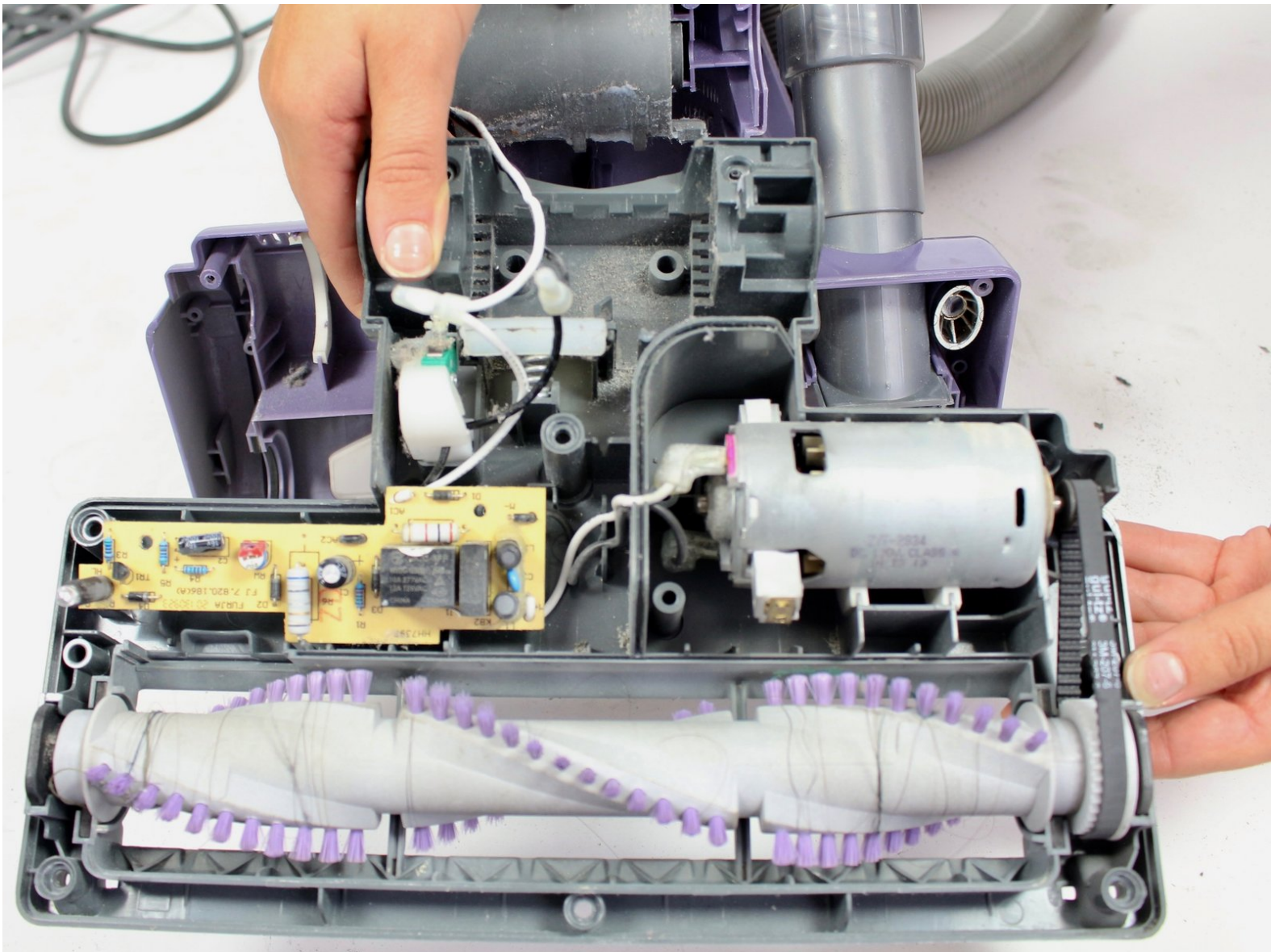




Shark NV352 Roller Brush Motor Replacement

This guide will walk you through the steps to remove the roller brush motor.

Written By: Wesley T Benica



INTRODUCTION

If your roller brush is clear of debris, but still won't rotate, the roller brush motor may need to be replaced. Follow these steps to remove the roller brush motor for replacement.



TOOLS:

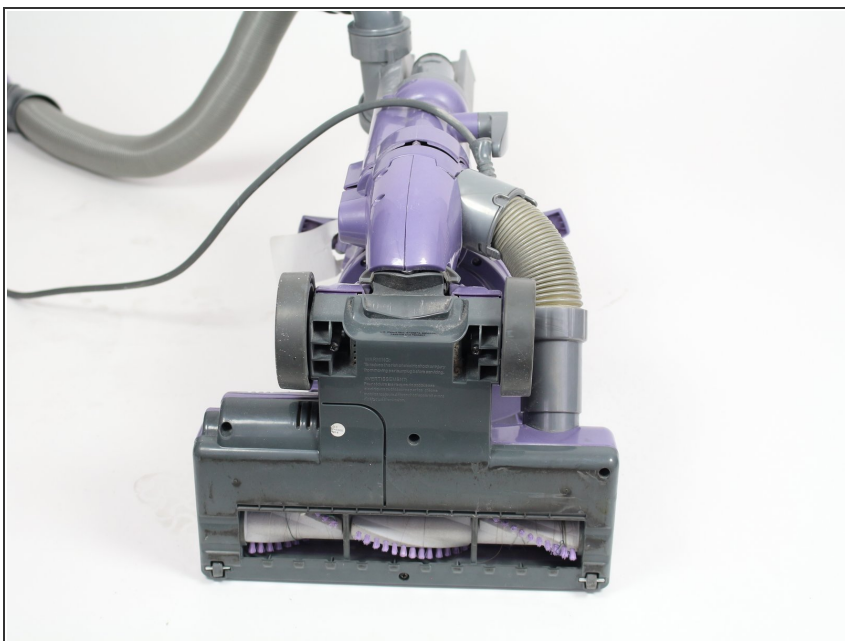
- [Phillips #2 Screwdriver](#) (1)
 - [Metal Spudger](#) (1)
 - [Soldering Iron](#) (1)
-

Step 1 — Roller Brush



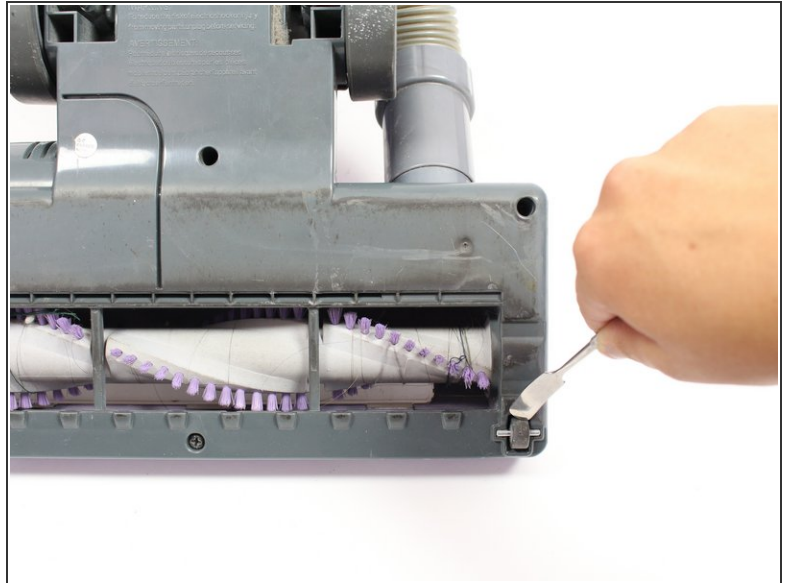
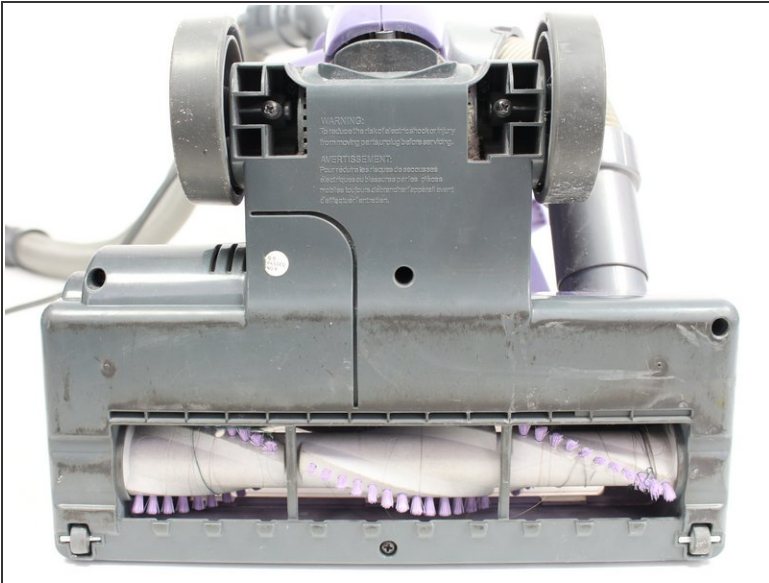
- Lift the latches on both sides of the vacuum to release the dust canister.
- Remove the dust canister from the vacuum by lifting it up.

Step 2



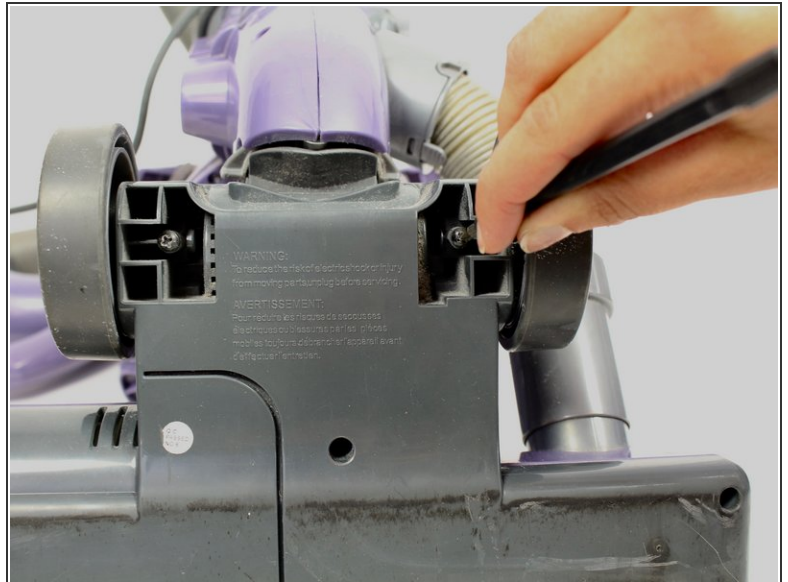
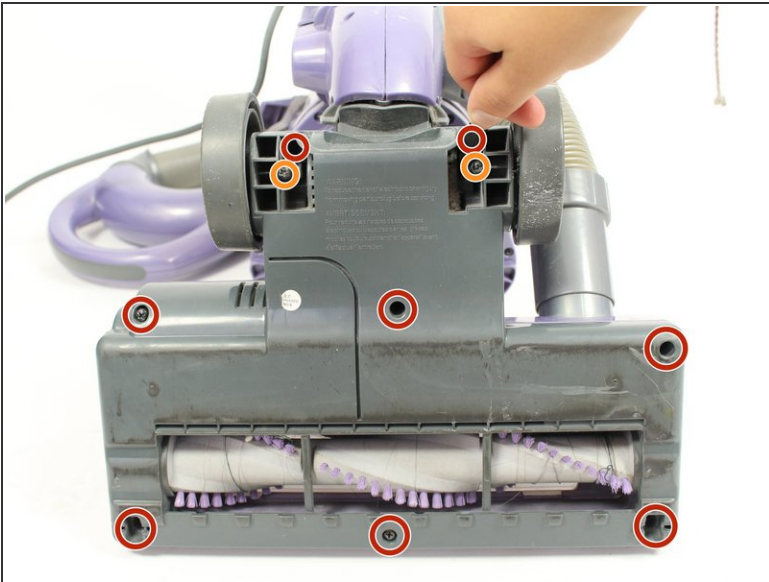
- Lay down the vacuum to access the bottom panel of the roller brush compartment.

Step 3



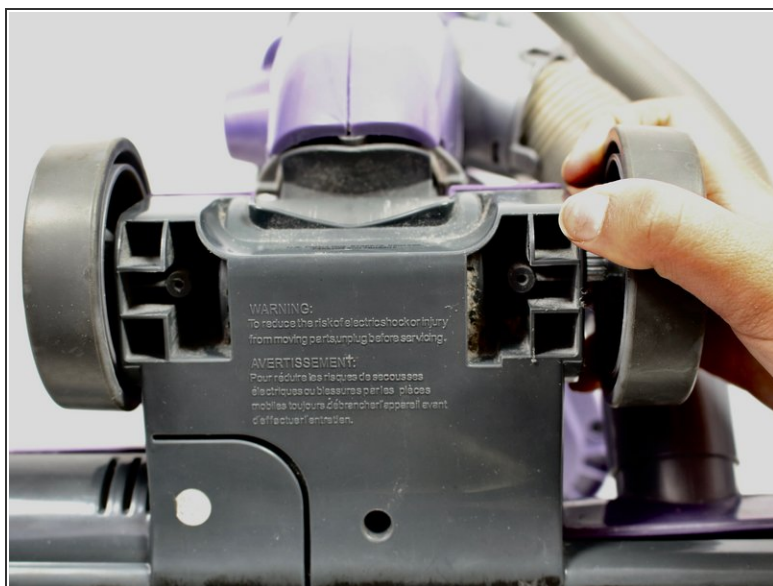
- Using the metal spudger, pry the two small wheels located at the two bottom corners of the vacuum to remove them.

Step 4



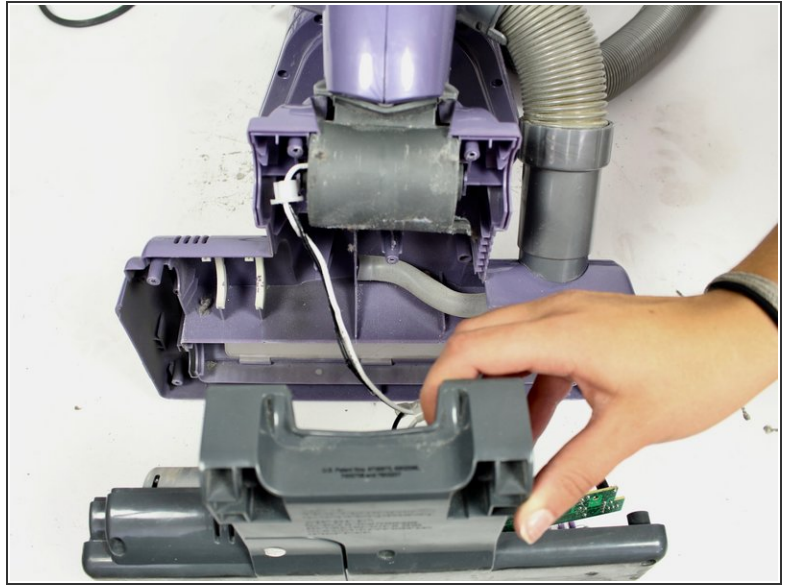
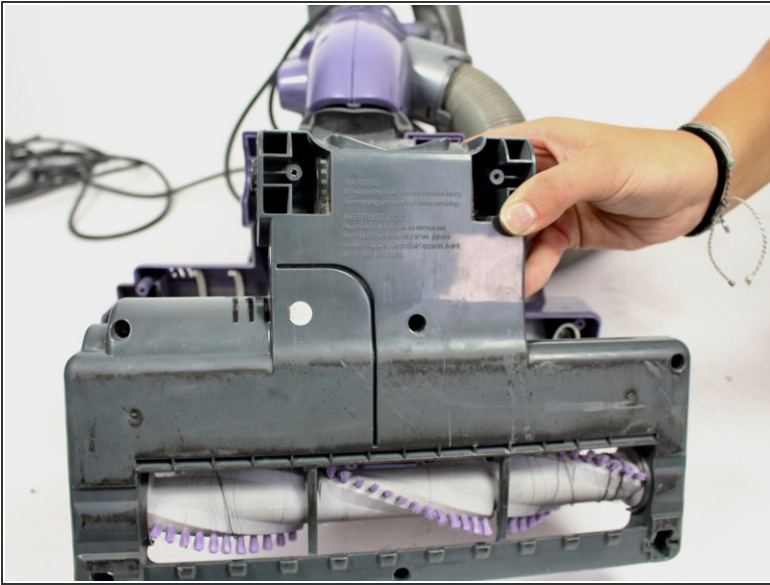
- Remove the eight 19mm Phillips #2 screws from the plastic cover.
- Remove the two 14 mm Phillips #2 screws from the upper section of the plastic cover.


Step 5



- ❗ You will need to apply a strong force while pulling the wheels off because they are attached very tightly.
- Remove the wheels by pulling them out of their axles, away from the vacuum.

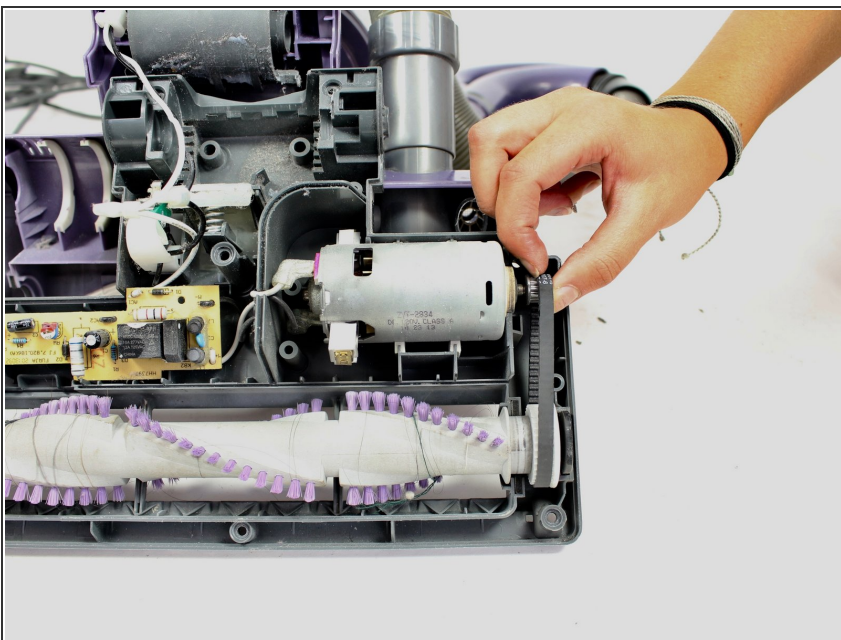
Step 6



 Perform the next step slowly and carefully so the wiring connecting the motherboard to the rest of the vacuum is not broken.

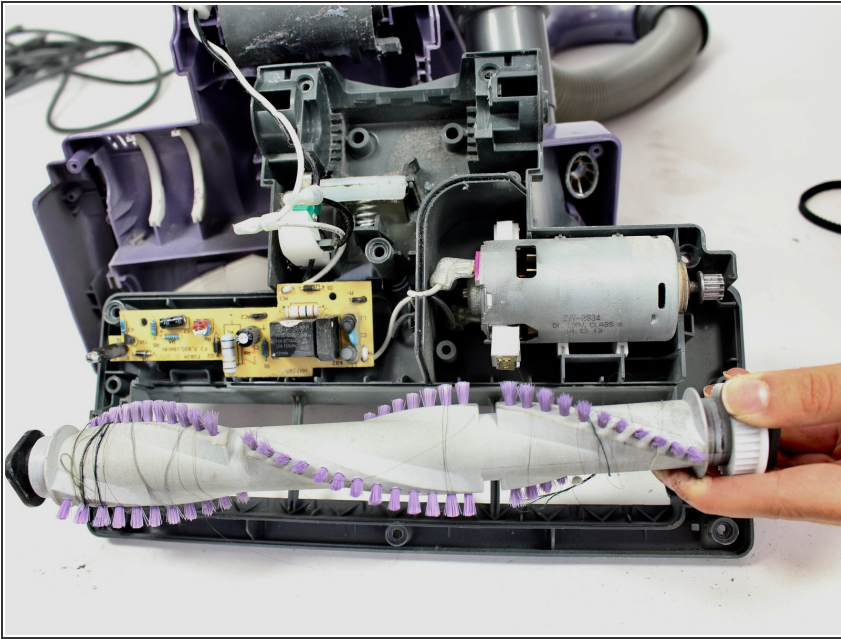
- Gently pull the grey lower part of the roller brush compartment away from the purple upper part of the compartment.

Step 7



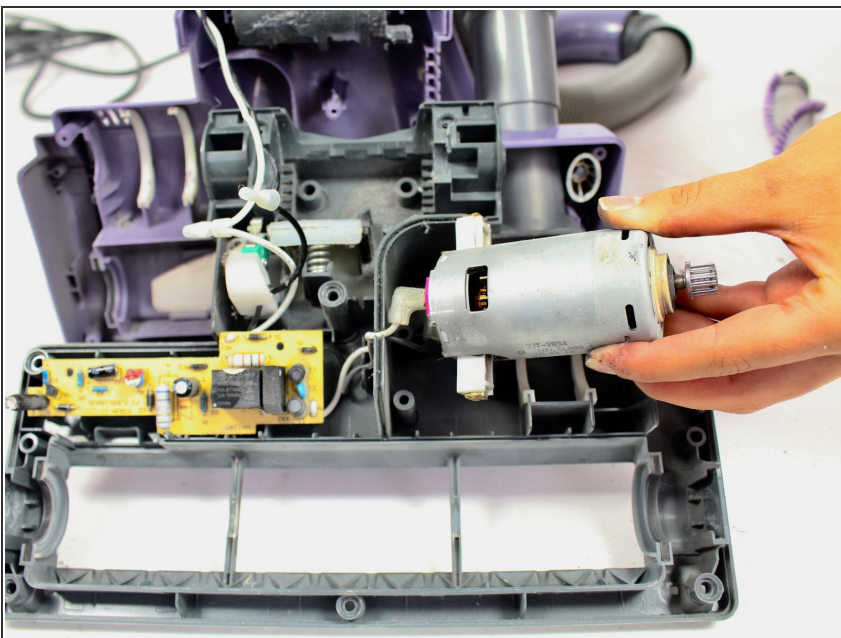
- Lift up and then pull the roller belt off of the roller brush and the motor to remove it.

Step 8



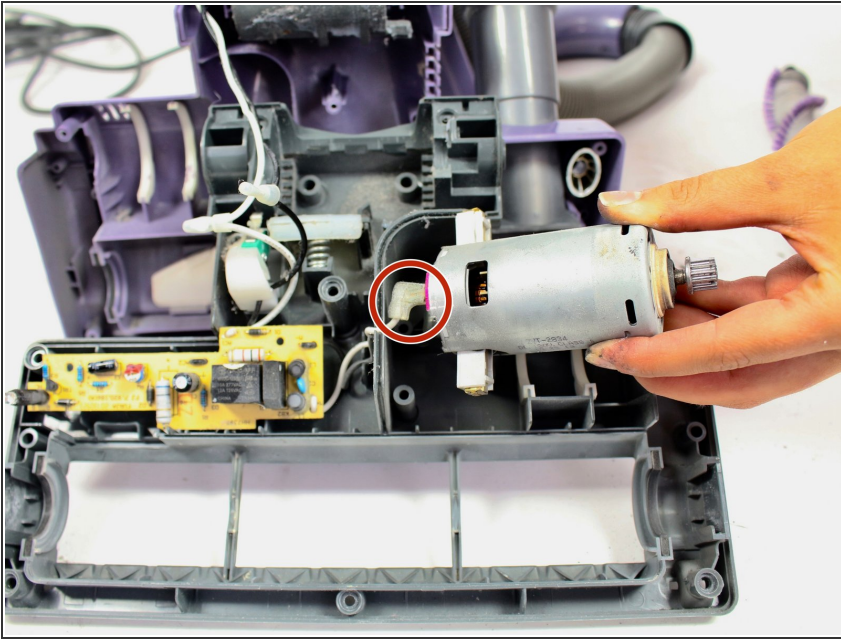
- Take out the roller brush by lifting it out of its tray.

Step 9 — Roller Brush Motor



- ⚠ The wires are attached to the motor, so take out the motor slowly to ensure that they do not break.
- Remove the roller brush motor by carefully lifting it out of the vacuum.

Step 10



- Desolder the wires running to the motor from the motherboard. For details on how to desolder, visit this [soldering guide](#).

To reassemble your device, follow these instructions in reverse order.