



# Shark Navigator Lift-Away Deluxe NV360

## Power Button Replacement

This guide shows how to replace the power button on the Shark Navigator Lift-Away Deluxe NV360.

Written By: Elena Postupalskaya



---

## INTRODUCTION

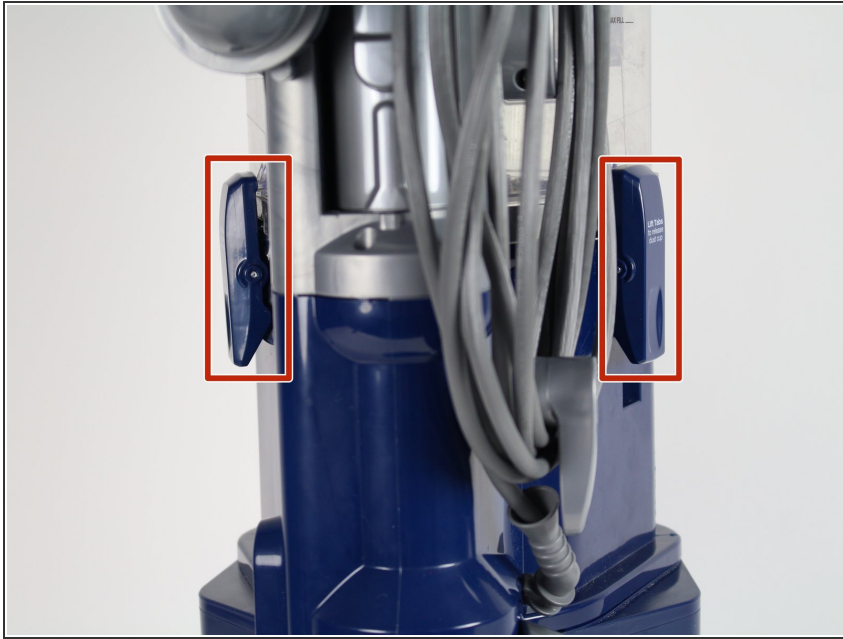
The foam and felt filters need to be removed first in order to replace the power button. Replacing the power button might help solve issues with the vacuum not turning on or the roller brush not spinning.

---

### TOOLS:

- [Phillips #1 Screwdriver](#) (1)
  - [iFixit Opening Tools](#) (1)
  - [Metal Spudger](#) (1)
-

## Step 1 — Foam and Felt Filters



- Locate the latches on the side of the dust cup, the clear plastic chamber in the center of the vacuum.

## Step 2



- Pull the bottom of the latch with your hand in an upward direction.
- Lift the top of the latch up and away from the dust cup using your hand.
- Repeat the above steps with the latch on the other side of the dust cup.

### Step 3



- Lift the dust cup up and away by its handle on the top with your hands.

### Step 4



- Lift the foam filter up, out, and away with your hands.



## Step 5



- Lift the felt filter up, out, and away with your hands by the tab on the top.

## Step 6 — Power Button



- Locate the red latch on the side of the vacuum cleaner.
- Push the circular region of the latch with your finger.

## Step 7



- Lift this upper plastic body of the vacuum cleaner up with your hands while continuing to press on the circular region of the latch.

## Step 8



- Locate the lower junction that connects the curved grey plastic tube and the hose coming from the vacuum cleaner's handle.
- Press on the two grey flaps on either side of the hose simultaneously with your fingers and lift the hose out of the plastic cup with your hand.

## Step 9



- Locate the red latch that was next to the hose from the previous step.
- Hold the bottom of vacuum cleaner's handle and its extension.
- Use your other hand to press on the latch.
- Lift the handle off the vacuum cleaner.

## Step 10



- Remove the two 15mm screws with the PH1 screwdriver located on the bottom side of grey plastic body from which the handle was removed.



## Step 11



- Lift the grey compartment out of the main body of the vacuum cleaner by pulling upwards with your hands.

## Step 12



- Continue to pull on the grey compartment until it is fully out of the main body of the vacuum.
- Place the grey compartment on a surface for the next step.



## Step 13



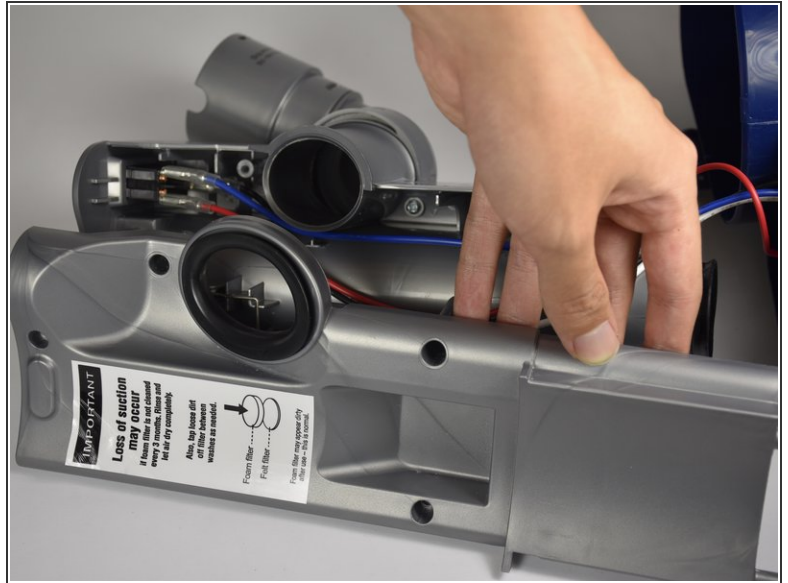
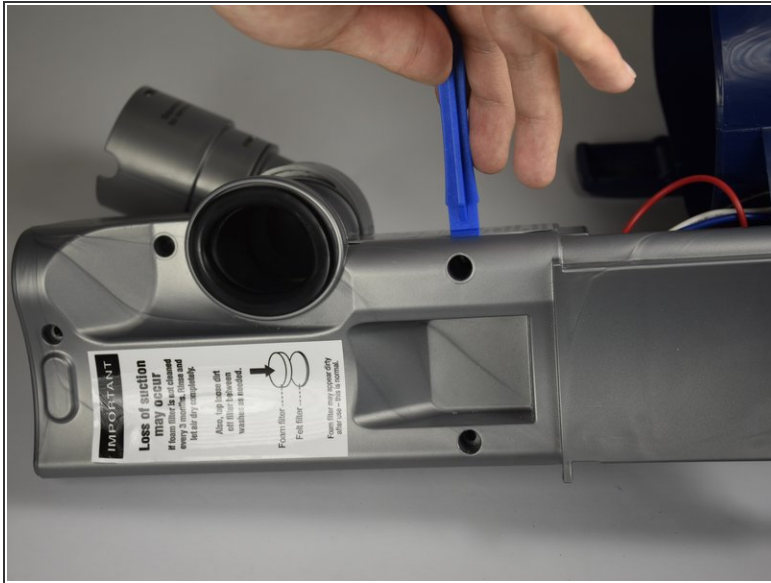
- Peel the sticker away with your hands until the hidden screw hole is fully exposed.

## Step 14



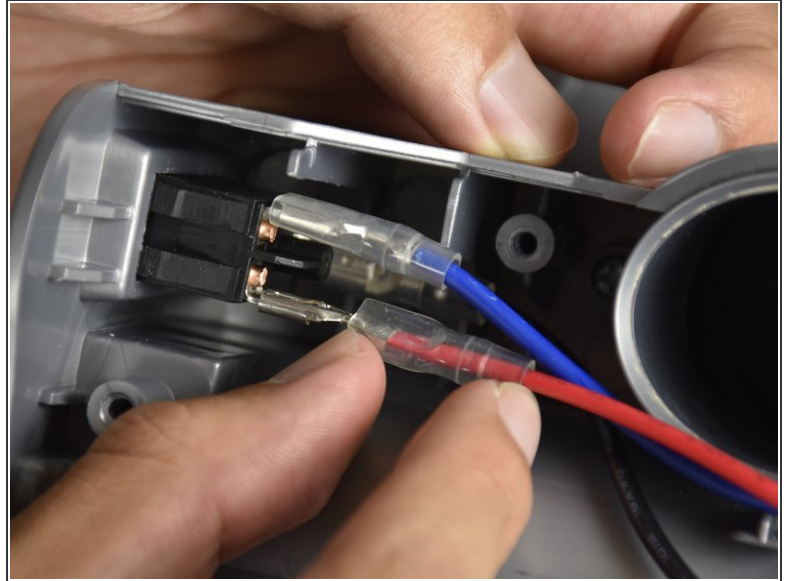
- Locate and remove the five 15mm screws with a PH1 screwdriver.

## Step 15



- Insert plastic opening tool into the crevice in the middle between the two halves of the grey compartment.
- Apply an outward force throughout and all around the gap in order to separate the two plastic halves.

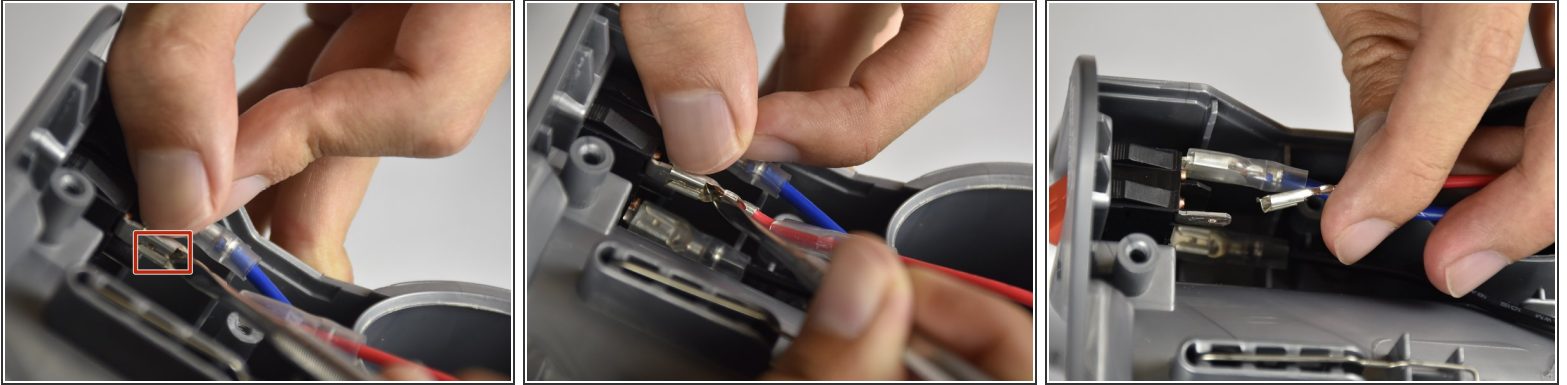
## Step 16



- Locate the red power button and its red, blue, and black connected wires.
- Pinch and pull the red wire's clear plastic insulator away from the power button with your hands until the metal connector is fully exposed.
- Repeat this step for the blue wire.



## Step 17



- Locate the protrusion on the metal connector of the red wire.
- Push down on the protrusion with the metal spudger while pushing the connector on the red wire away from the power button with your fingers.
- Pull and wiggle the wire away by its connector with your fingers until it is completely detached from the connector on the power button.
- Repeat this step for the blue wire

## Step 18



- Push down towards the outside on the ledges that are holding the power button inside the grey frame.
- Pull on the power button from the outside of the grey compartment with your hands, once the ledges are past the edge of grey frame.

## Step 19



- Pull the power button a couple inches away from the grey frame with your hands so that you have easy access to the black wire's connection.
- Repeat steps 16 and 17 on the black wire and its connector.
- Remove the disconnected power button away from the frame with your hands.

To reassemble your device, follow these instructions in reverse order.