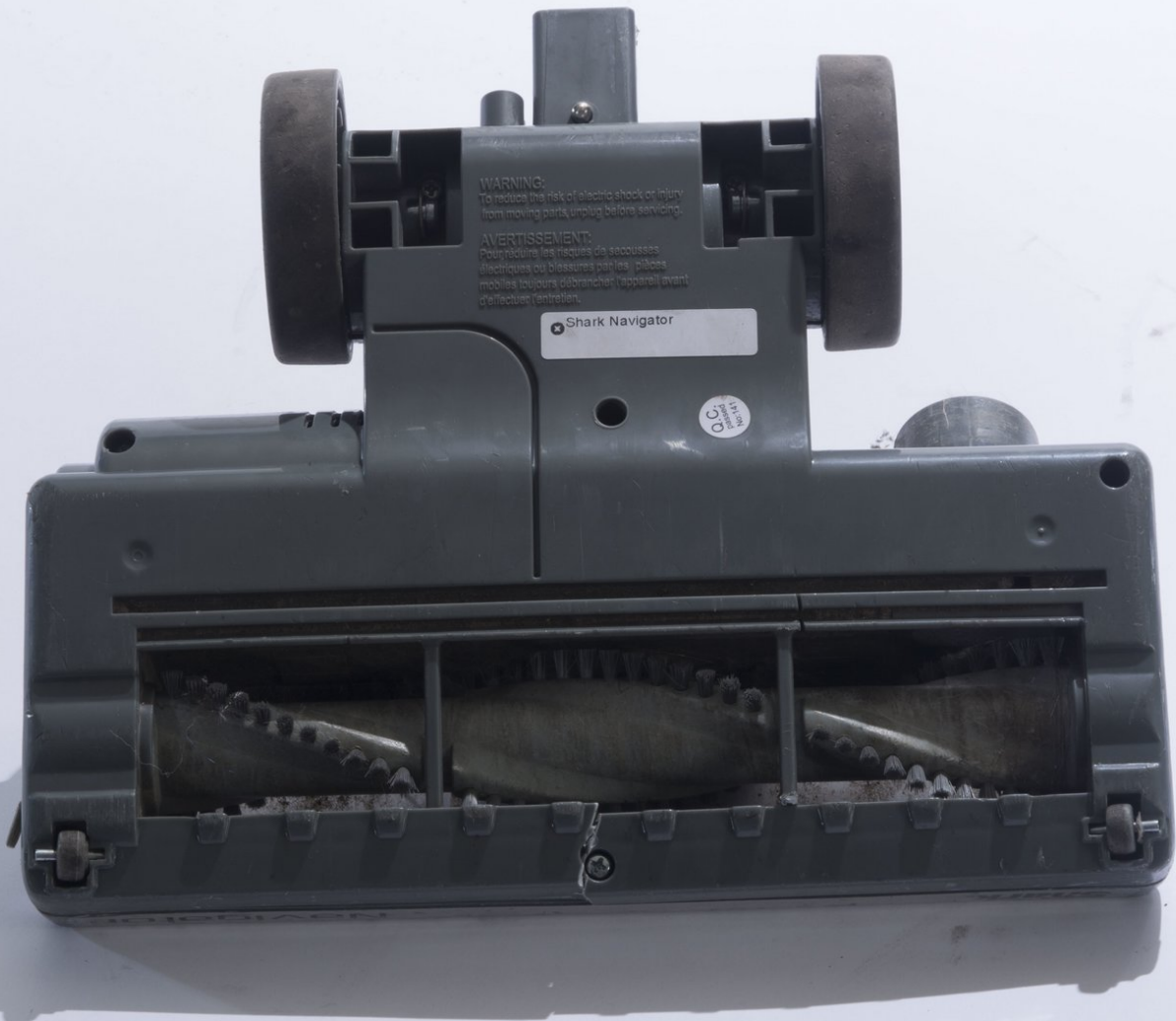




# Shark Navigator Lightweight Upright Brush Head Replacement

This guide will explain how to repair the brush head on the Shark Navigator Lightweight Upright.

Written By: Suzie



---

## INTRODUCTION

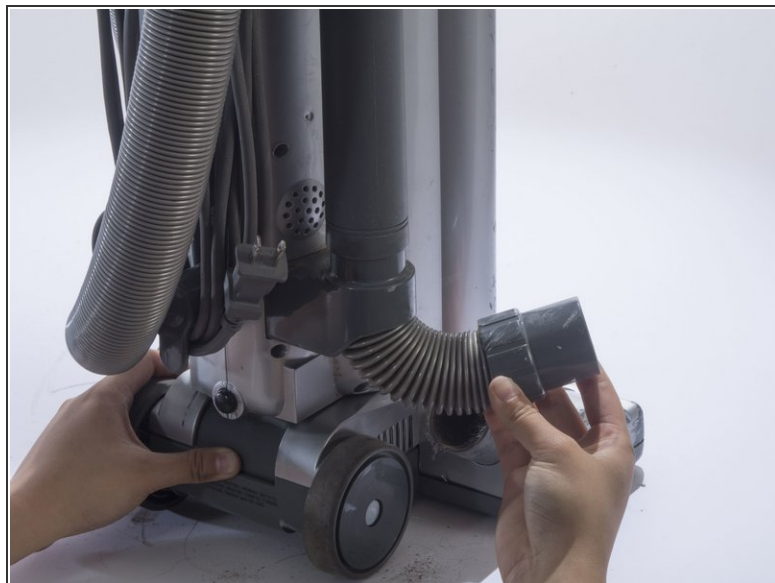
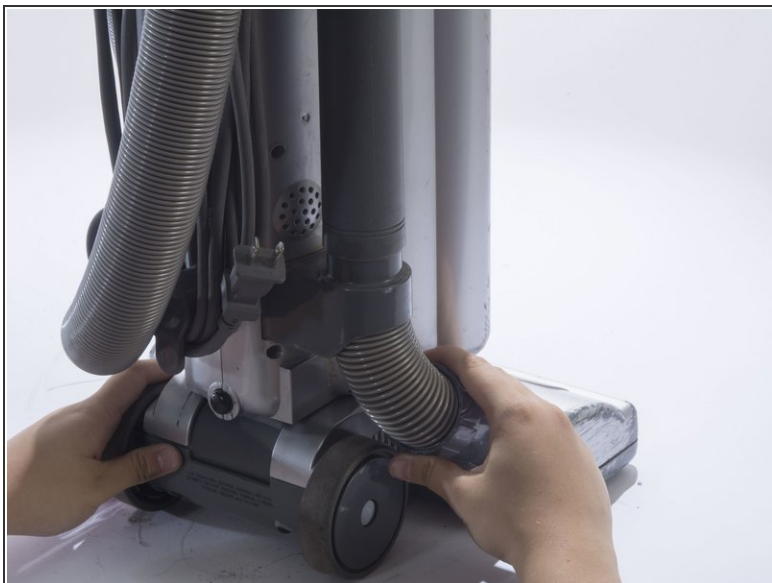
Brush heads are prone to collecting debris and unwanted material. This guide will show you how to properly access and remove the brush head.



### TOOLS:

- [JIS #1](#) (1)
  - [iFixit Opening Tools](#) (1)
  - [Metal Spudger](#) (1)
-

## Step 1 — Head Shell



- Detach the hose connected on the bottom of the vacuum by pulling it out of the casing.

## Step 2



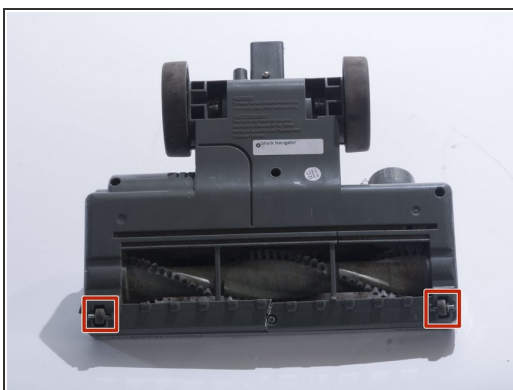
- Lay the vacuum on its side.
- Press in the black, rubberish button located on the back of the vacuum to detach the vacuum head from the body.

### Step 3



- Flip over the vacuum head so the brush head is facing up.

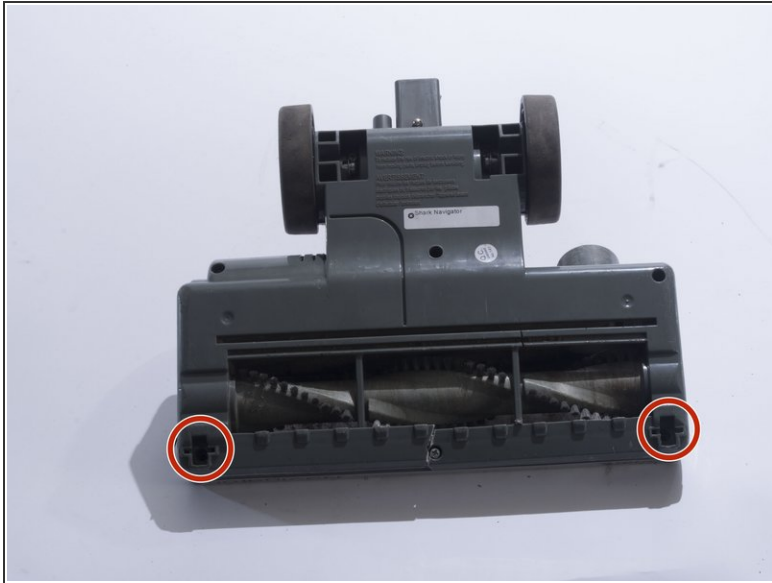
### Step 4



- Remove the small front wheels with a metal spudger by inserting the metal spudger in front of the wheel and slowly prying up. This will free the wheel and reveal the screw beneath it.
- Repeat this for the other wheel.

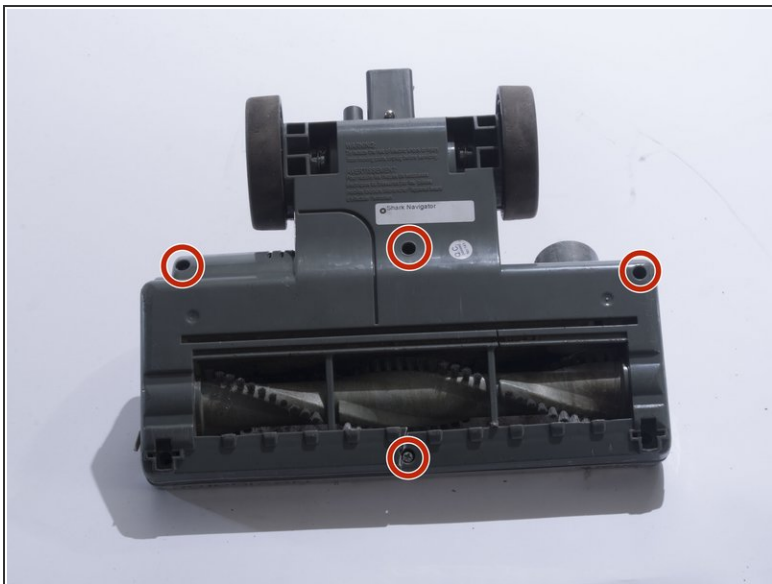


## Step 5



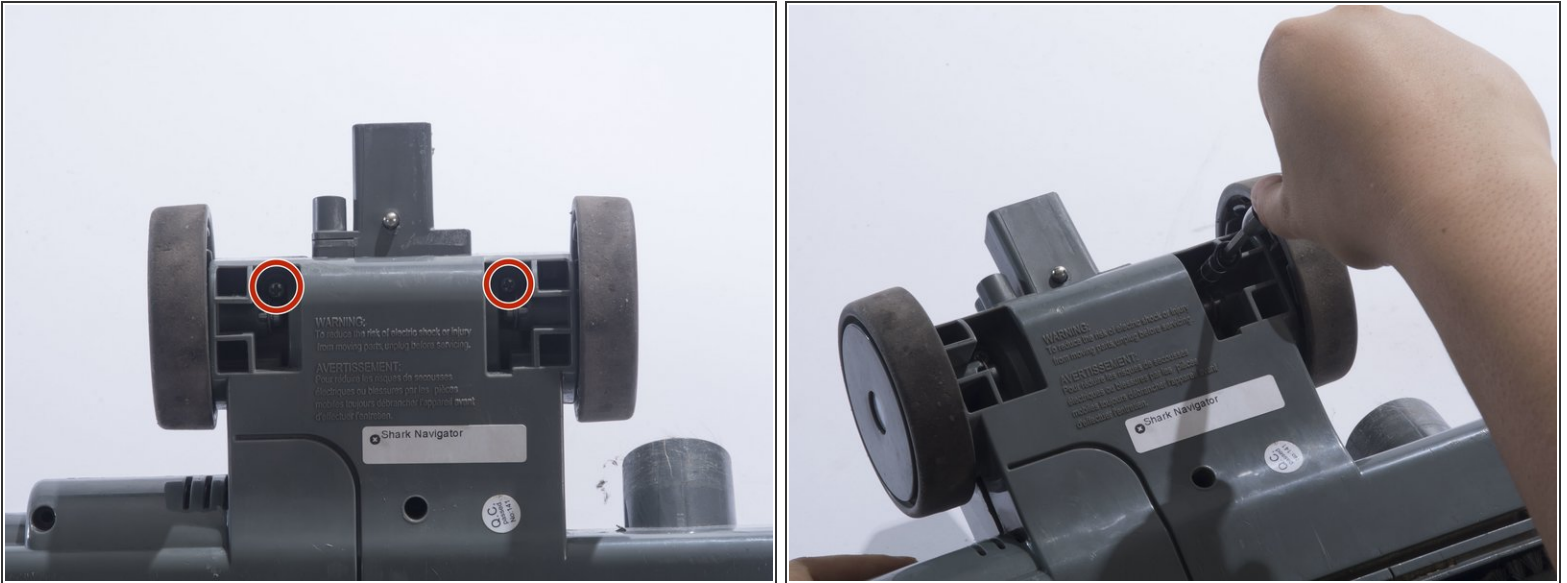
- Remove the two 18mm screws with a JIS 1 screwdriver.

## Step 6



- Remove the four 18mm screws located on the top corners and the bottom/middle of the vacuum head using a JIS 1 screwdriver.

## Step 7



- Remove the two 18mm screws located on the inside of the large wheels using a JIS 1 screwdriver.

## Step 8



- Remove the plastic cover by prying the plastic cover up using a plastic opening tool.

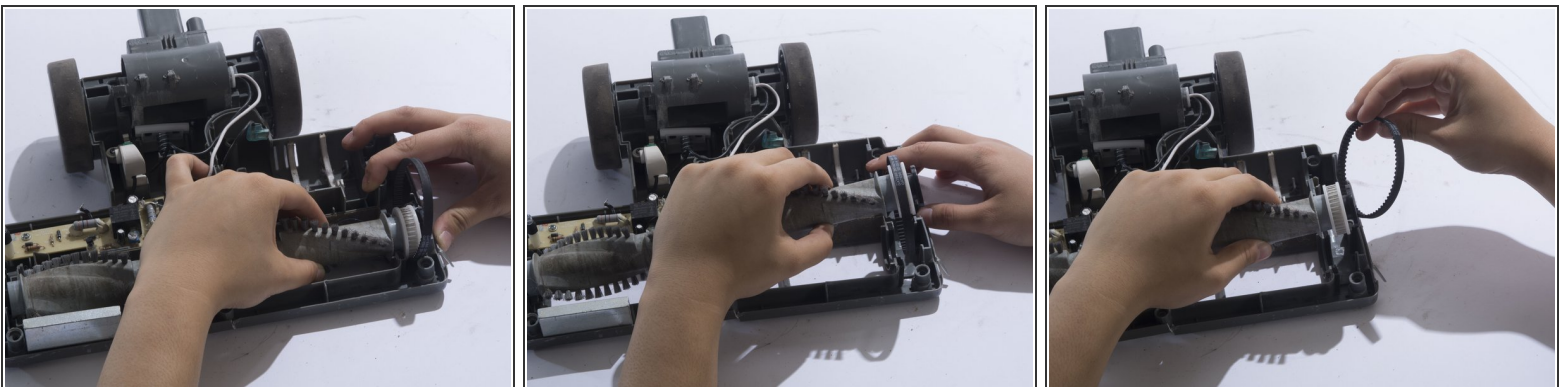
**i** Prying in multiple locations may be necessary to create separation.

## Step 9 — Brush Head



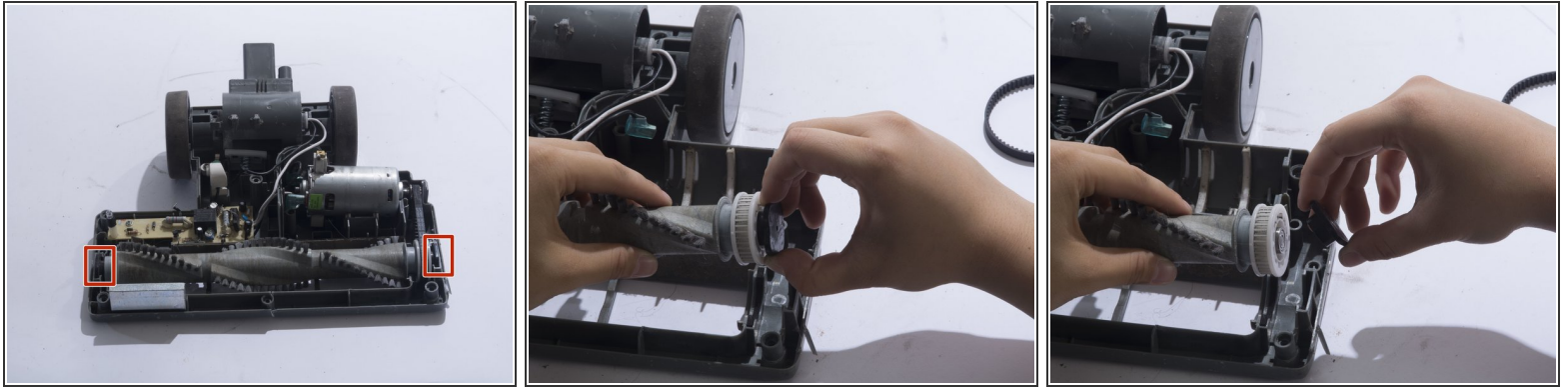
- Remove the belt, found on the right hand side, from the motor gear.

## Step 10



- Lift up the brush head from the plastic housing, slight force may be needed.
- Remove the band from the brush head.

## Step 11



- Remove the plastic caps on each end of the brush head.

To reassemble your device, follow these instructions in reverse order.