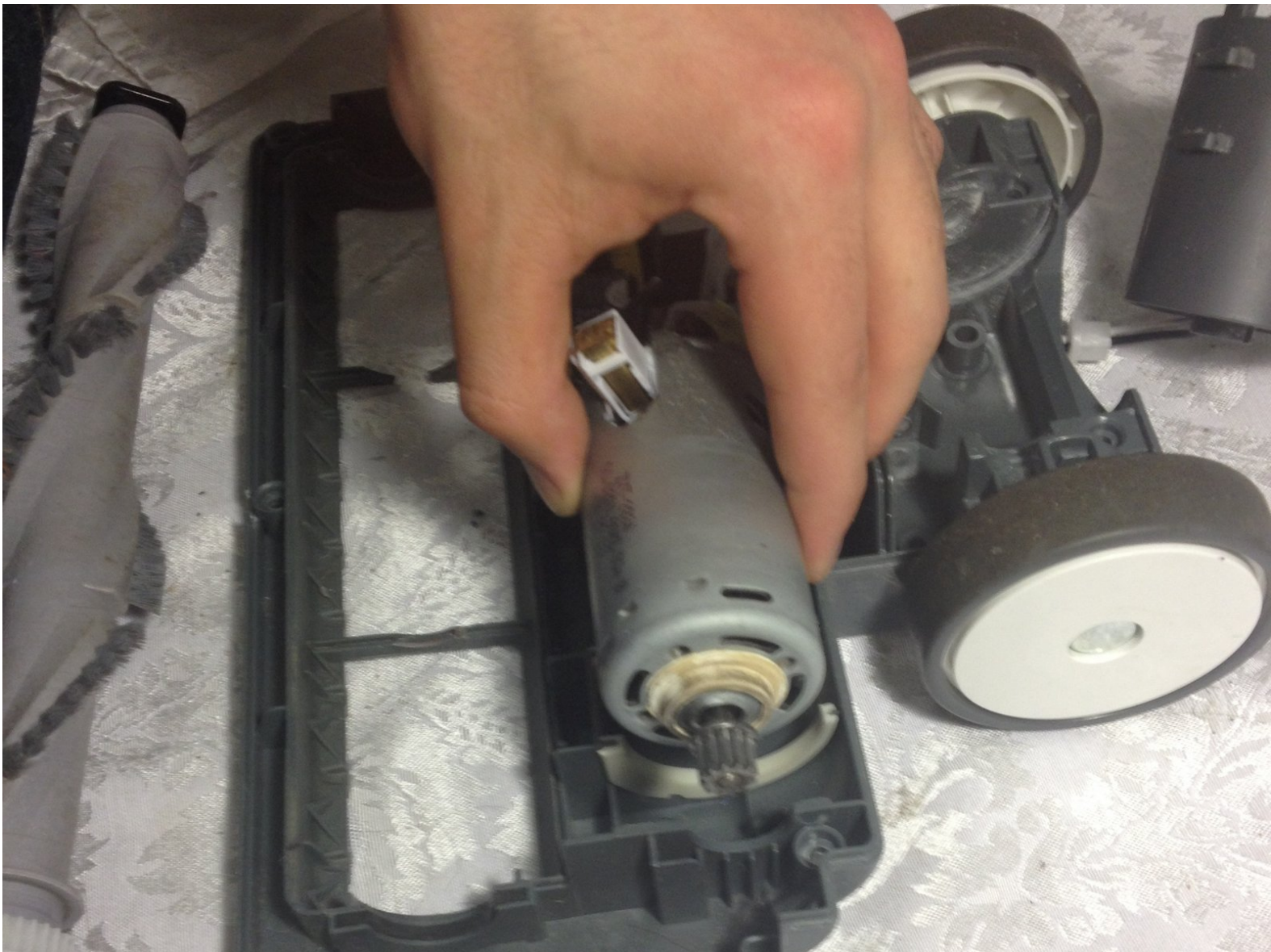




Shark Navigator Motor Replacement

This repair guide will help you replace the motor of the vacuum.

Written By: Molina Oung





TOOLS:

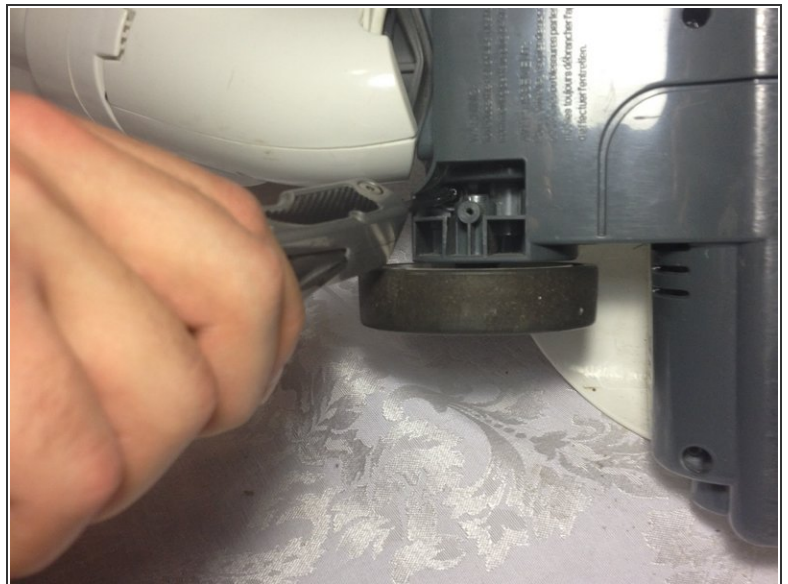
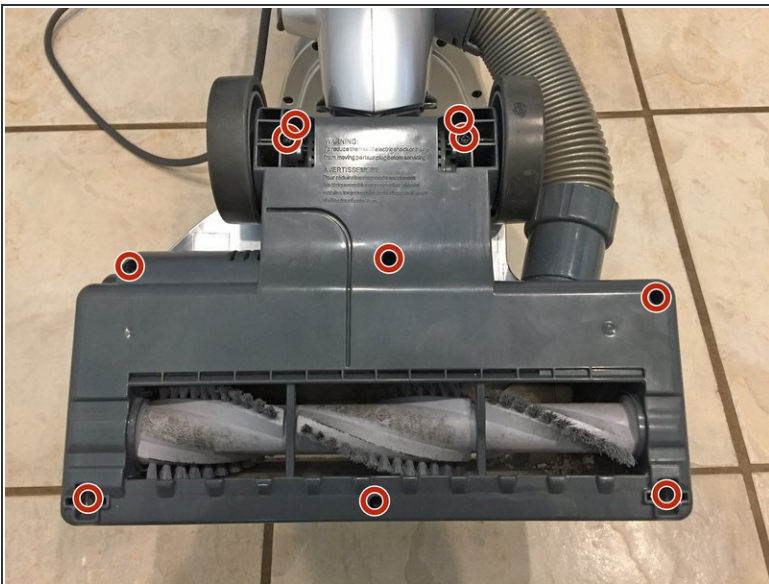
- [Essential Electronics Toolkit](#) (1)
-

Step 1 — Roller Brush Compartment



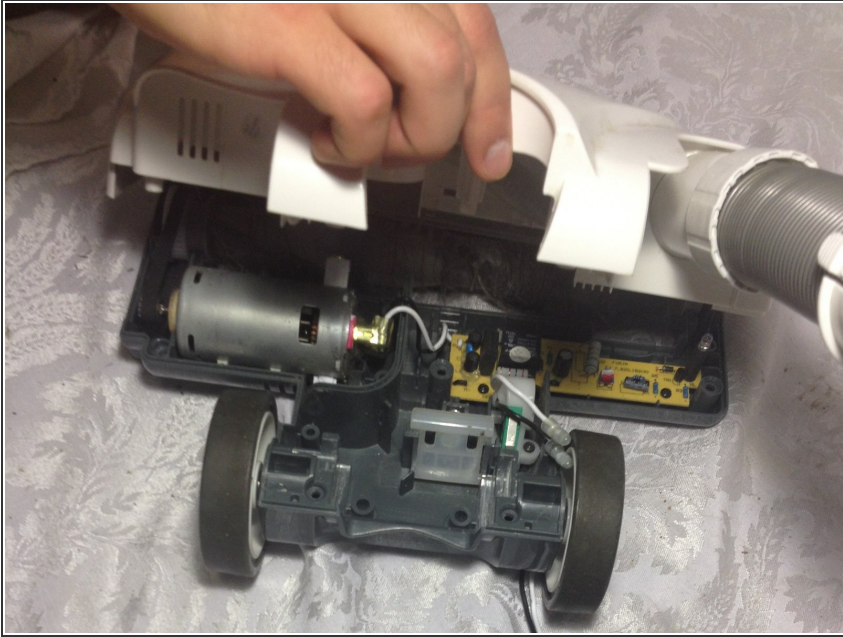
- Pop out the two small wheels located on the front end of the bottom of the roller brush compartment.

Step 2



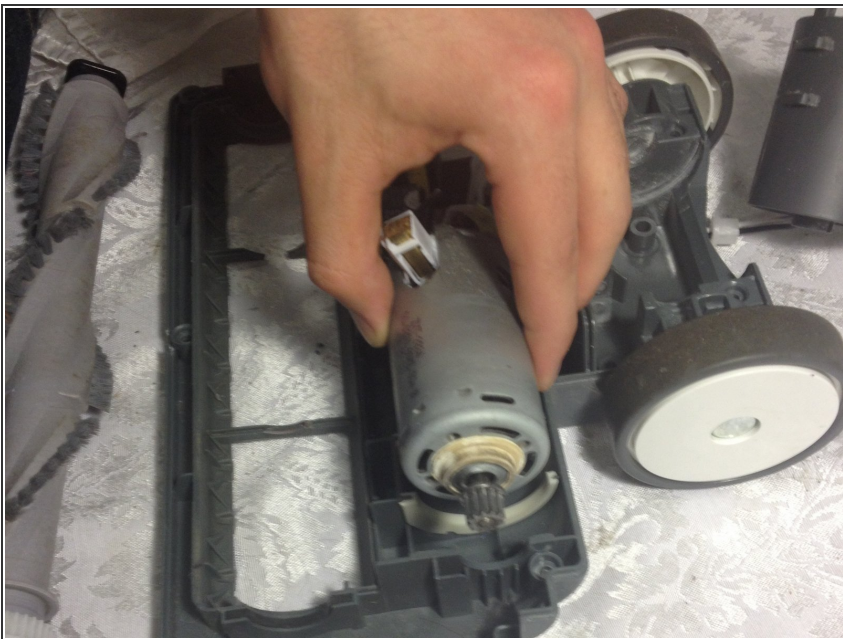
- Remove the 10 Phillips screws located on the bottom of the roller brush compartment. (Two of these screws are located under the wheels from the previous step.)
 - ☑ The screws have varying lengths, so keep track of where each one goes for reassembly.

Step 3



- Remove the white plastic cover to expose the roller compartment underneath.

Step 4 — Motor



- Once the vacuum top is opened, you can simply remove the motor as shown in the image.
- Make sure to untangle or unhook any wires that are connected to the motor.
- Once this is done, you can replace the old motor with a new one.

To reassemble your device, follow these instructions in reverse order.