



Shark Pet Perfect II Battery Replacement

These steps will show how to remove and replace the battery pack in the Shark Pet Perfect II

Written By: Christine Robles



INTRODUCTION

This step by step guide will help you remove the battery from its compartment. The battery can be easily removed in 4 steps, with very few tools. Care should be used when handling the battery.

TOOLS:

- [Phillips #1 Screwdriver](#) (1)
 - [iFixit Opening Tools](#) (1)
-

Step 1 — Battery



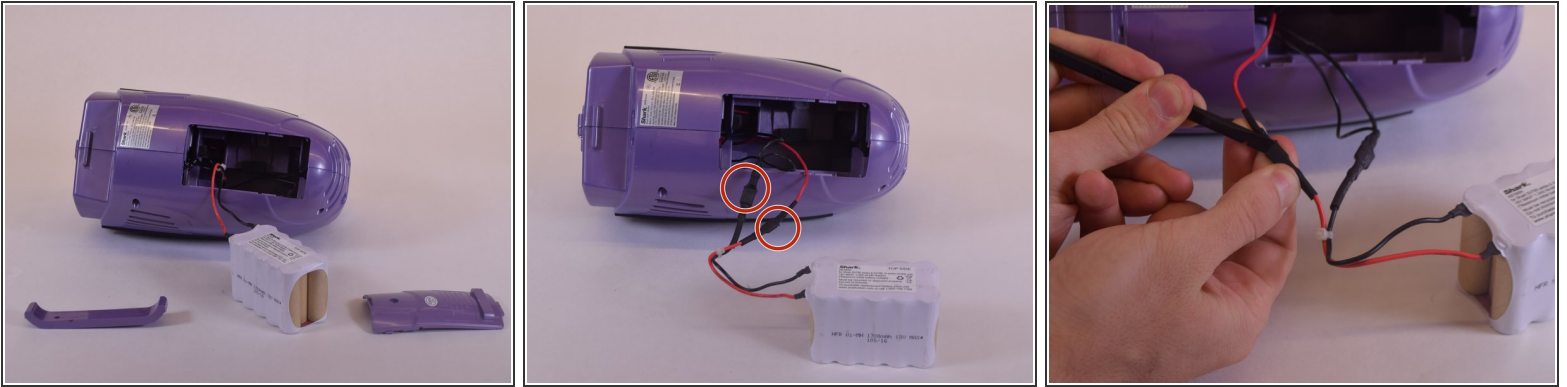
- Locate and remove the 7.5mm Philips screw holding the battery cover in place on bottom of the vacuum.

Step 2



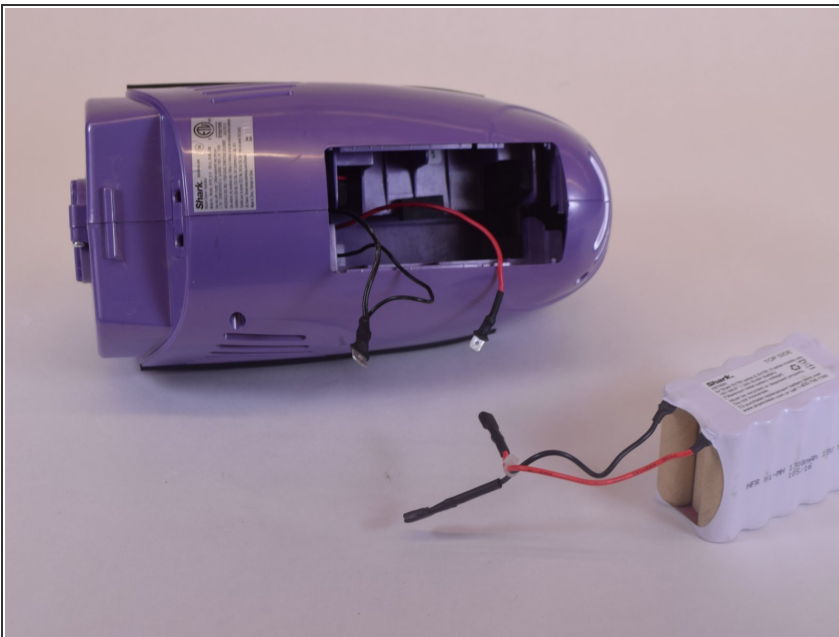
- Once the cover is removed, slide the plastic retaining bracket down and pull out to remove.

Step 3



- Pull the battery out of the compartment.
- Carefully disconnect the quick disconnect couplers.
- ⓘ The Couplers may be tightly secured so it may be necessary to use a small flat device to carefully loosen the coupler.
- ⚠ Be sure to use an ESD safe tool like the nylon spudger when working with wires and batteries—this will prevent injury and/or device damage.

Step 4



- Completely remove the old battery from the vacuum .

To reassemble your device, follow these instructions in reverse order.