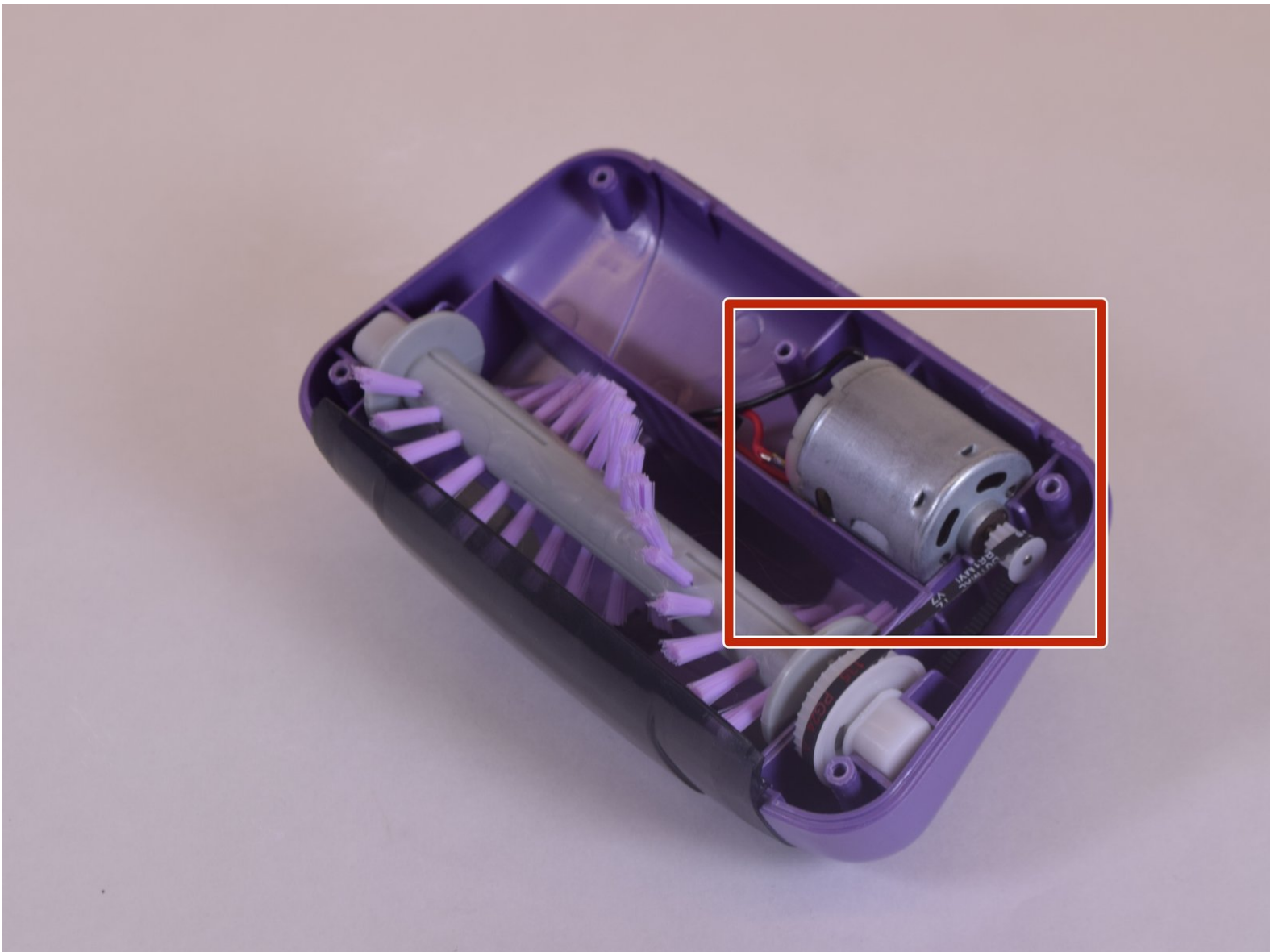




# Shark Pet Perfect II Front Brush Motor Replacement

Written By: Tanner Brown



---

## INTRODUCTION

This guide takes a bit more advanced steps from removing the motorized brush belt. After opening the motorized brush head, the motor is easily accessed. Caution should be used when handling the motor, damage or mishandling will inhibit use of the vacuum. Ensure device is de-energized before handling.



### TOOLS:

- [Phillips #1 Screwdriver](#) (1)
  - [iFixit Opening Tools](#) (1)
  - [Soldering Iron](#) (1)
-

## Step 1 — Front Belt



- Remove the motorized brush from the dust cup by pulling it apart.

## Step 2



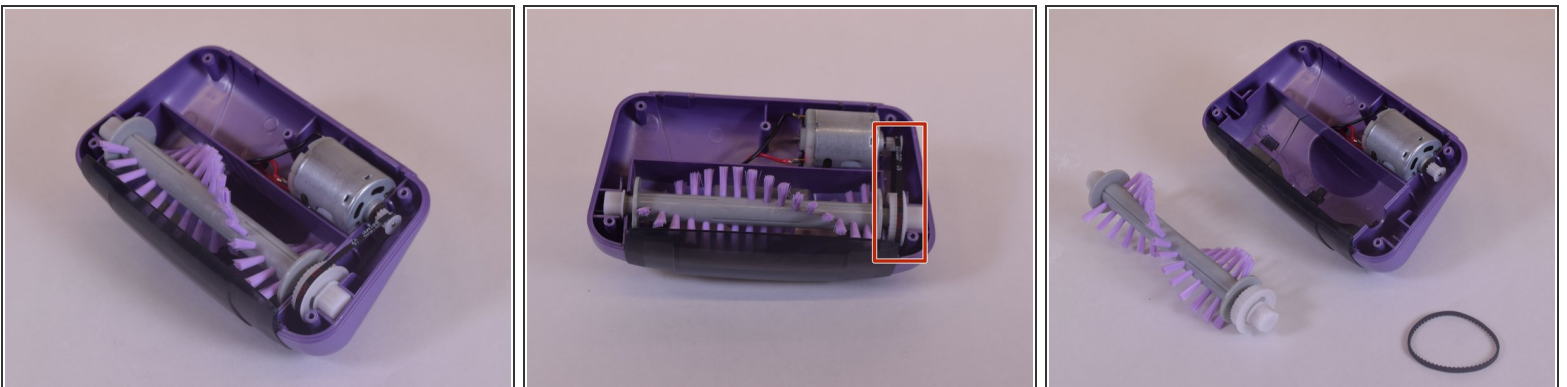
- Use a Phillips #1 screwdriver to remove the five 14mm screws from the face of the motorized brush.

### Step 3



- Separate the motorized brush face plate by using a flat prying tool.

### Step 4



- Remove the brush roller by lifting vertically away from the brush head. It should come out easily along with the belt.
- ⓘ Be careful in handling the belt. If stretched or damaged, the belt can cause the motorized brush to operate incorrectly.

## Step 5 — Front Brush Motor



- Lift the motor from the motor mount.
- Use a soldering tool to carefully soften the solder on the connectors.
- ⓘ If after re-soldering the wires to the motor doesn't cause it to begin functioning properly, you may attempt to replace it with another 18 volt DC electric hobby motor.
- ⚠ Manufacturer does not advertise exact specifications of motor. Attempt replacing motor as a last resort and do so at your own risk.

To reassemble your device, follow these instructions in reverse order.