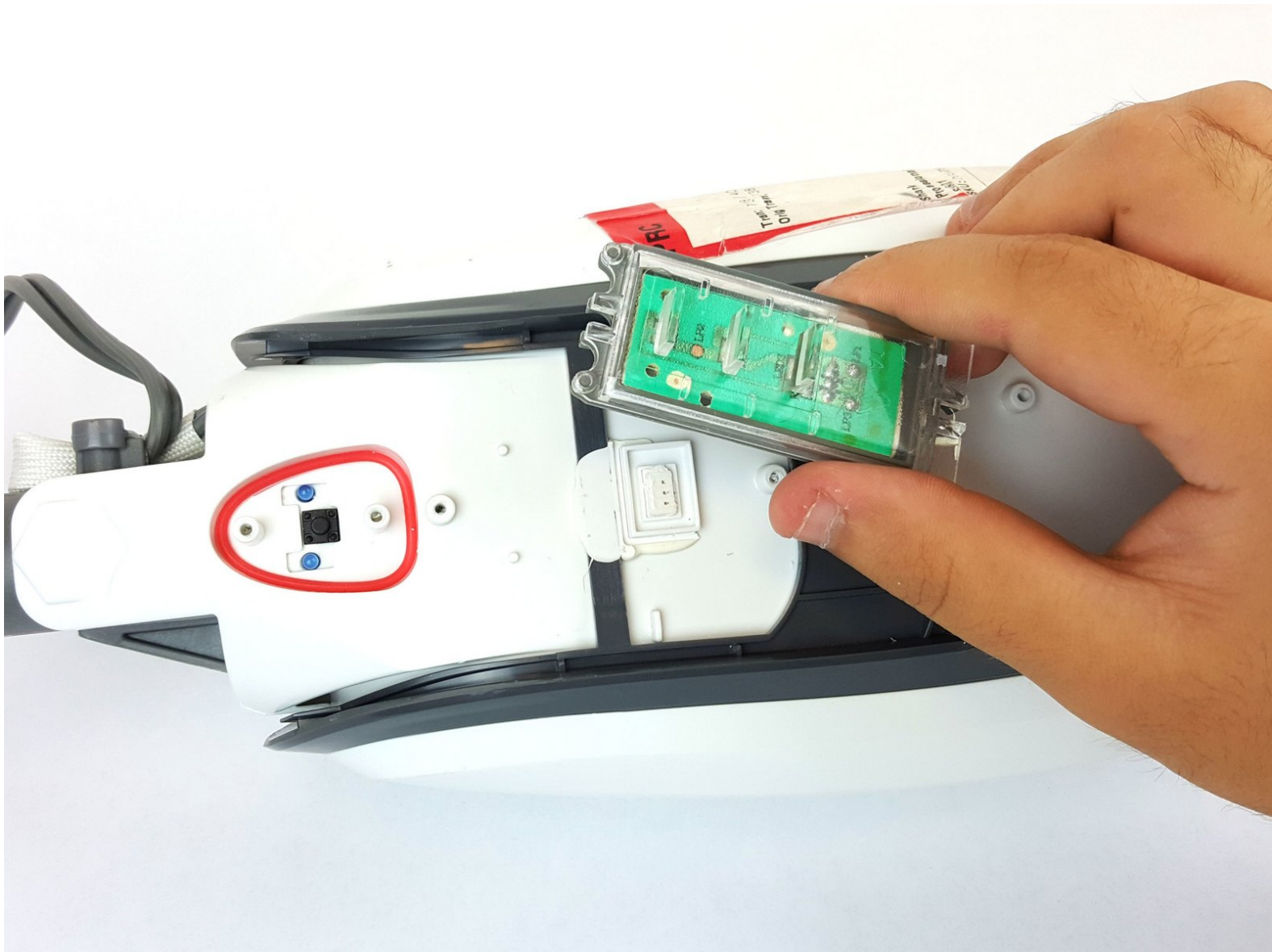




Shark Professional Steam Pocket Mop Control Panel Replacement

Replace the control panel which controls the settings of your Shark Professional Steam Pocket Mop with this step-by-step guide.

Written By: Brett Wilson



INTRODUCTION

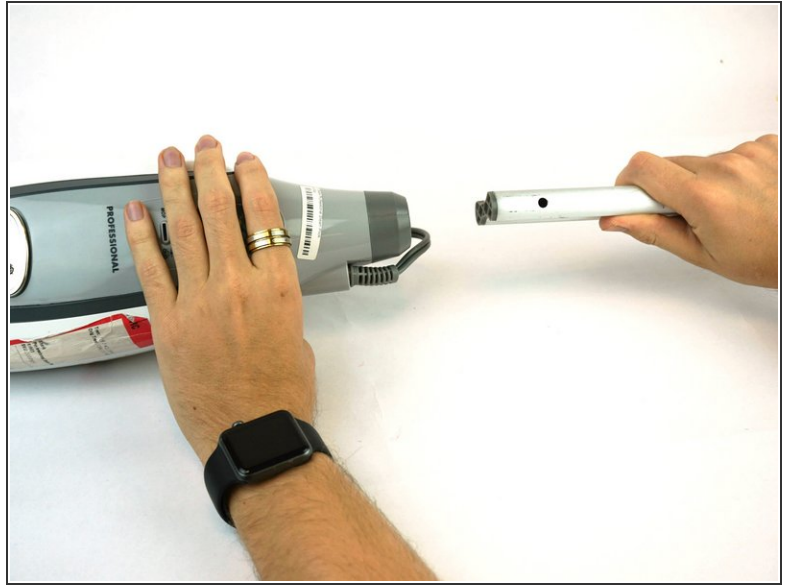
If the indicator lights don't appear to be functioning despite being plugged in, a faulty control panel might be the culprit. Before doing any repair/disassembly on your Shark Professional Steam Pocket Mop, make sure to unplug both the mop and empty the water tank for your safety.



TOOLS:

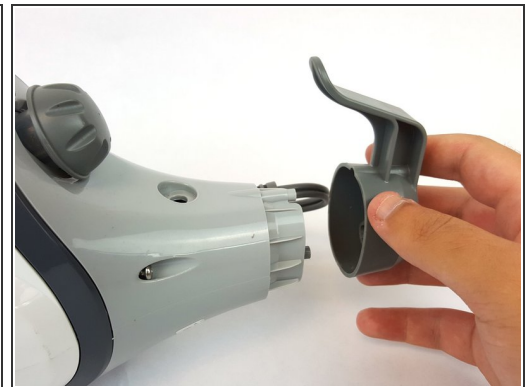
- [T10 Torx Security Bit Screwdriver](#) (1)
 - [Phillips #2 Screwdriver](#) (1)
 - [Metal Spudger](#) (1)
-

Step 1 — Shark Professional Steam Pocket Mop Front Panel Disassembly



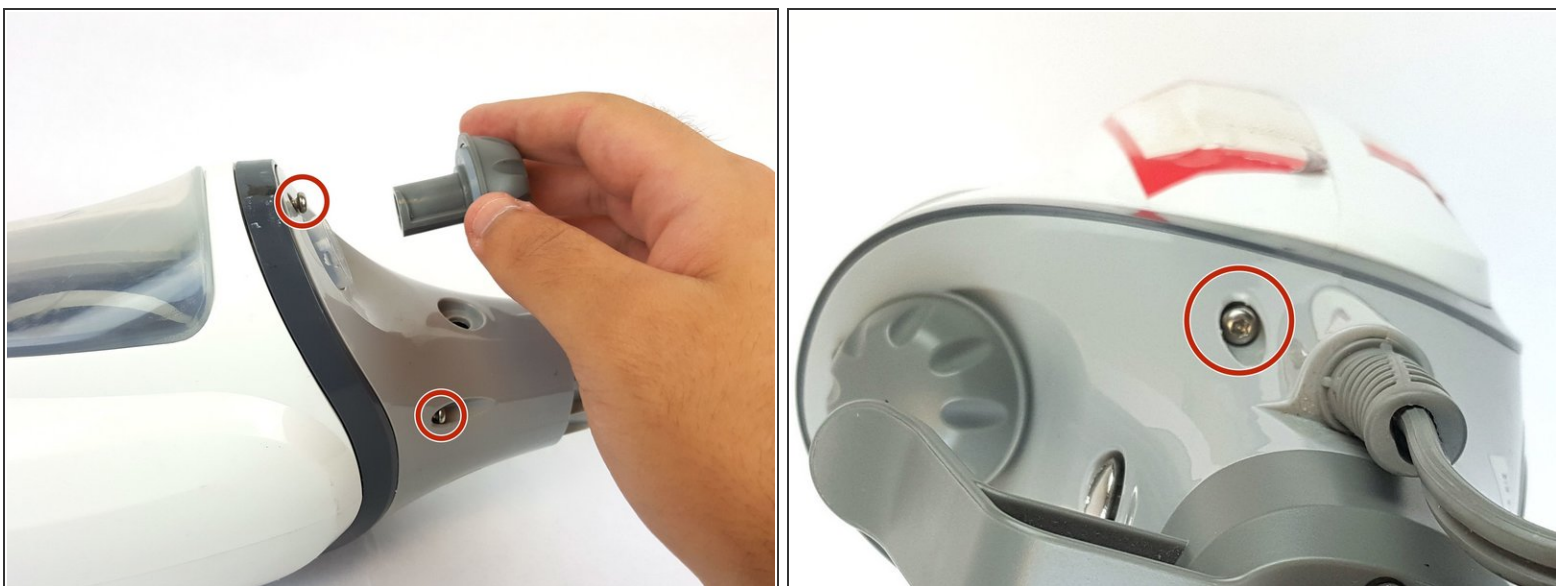
- Unwrap the power cord from the handle.
- Remove the 56.0 mm Phillips head #2 screw located above the water tank cap.
- Pull the handle to separate it from the body.

Step 2




- Remove the three 12.0 mm Phillips head #2 screws where the handle connects to the body.
- Remove the plastic cap.

Step 3



- Remove the three 16.0 mm T10 Torx screws near the top of the body and remove the water tank cap.

 The third screw is directly on other side of the bottom screw in the photo.

Step 4



- Remove steam control button cover with a metal spudger.
- Remove the two 12.0 mm Phillips head #2 screws underneath.
- Remove the plastic rim with clear plastic cover.

Step 5



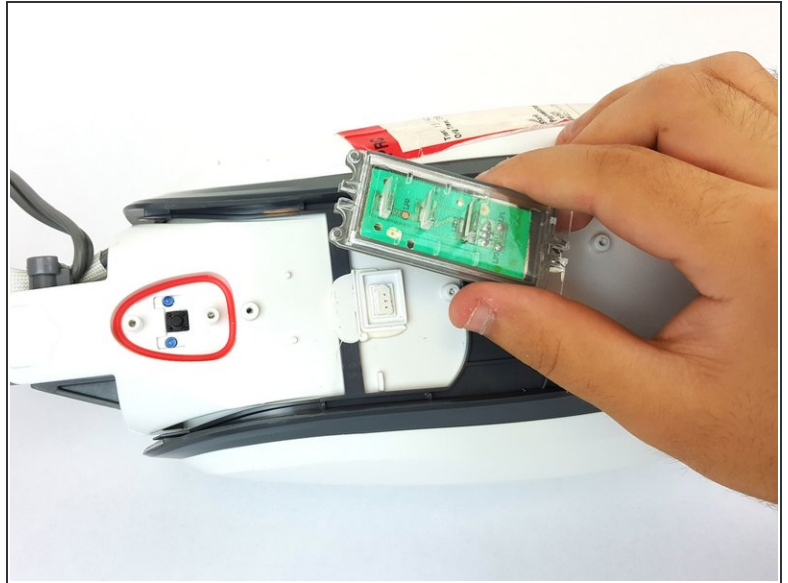
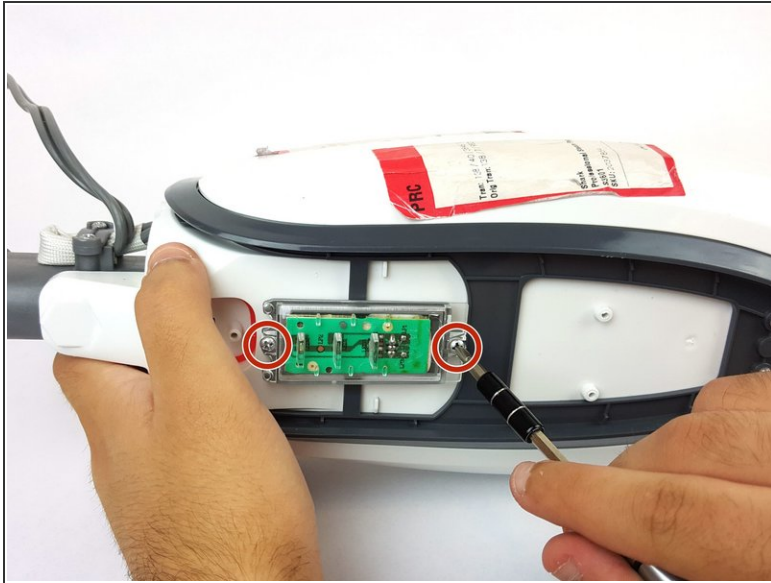
- Remove the Shark logo decal on the front of body using a metal spudger.
- Remove the two 12.0 mm Phillips head #2 screws underneath.
- Pull out the plastic cover to remove.

Step 6



- Pop off the grey front plate to expose the control panel and screws necessary to open mop body.

Step 7 — Control Panel



- Remove the two 12.0 mm Phillips head #2 screws. Disconnect the control board.
- Disconnect the control board

To reassemble your device, follow these instructions in reverse order.