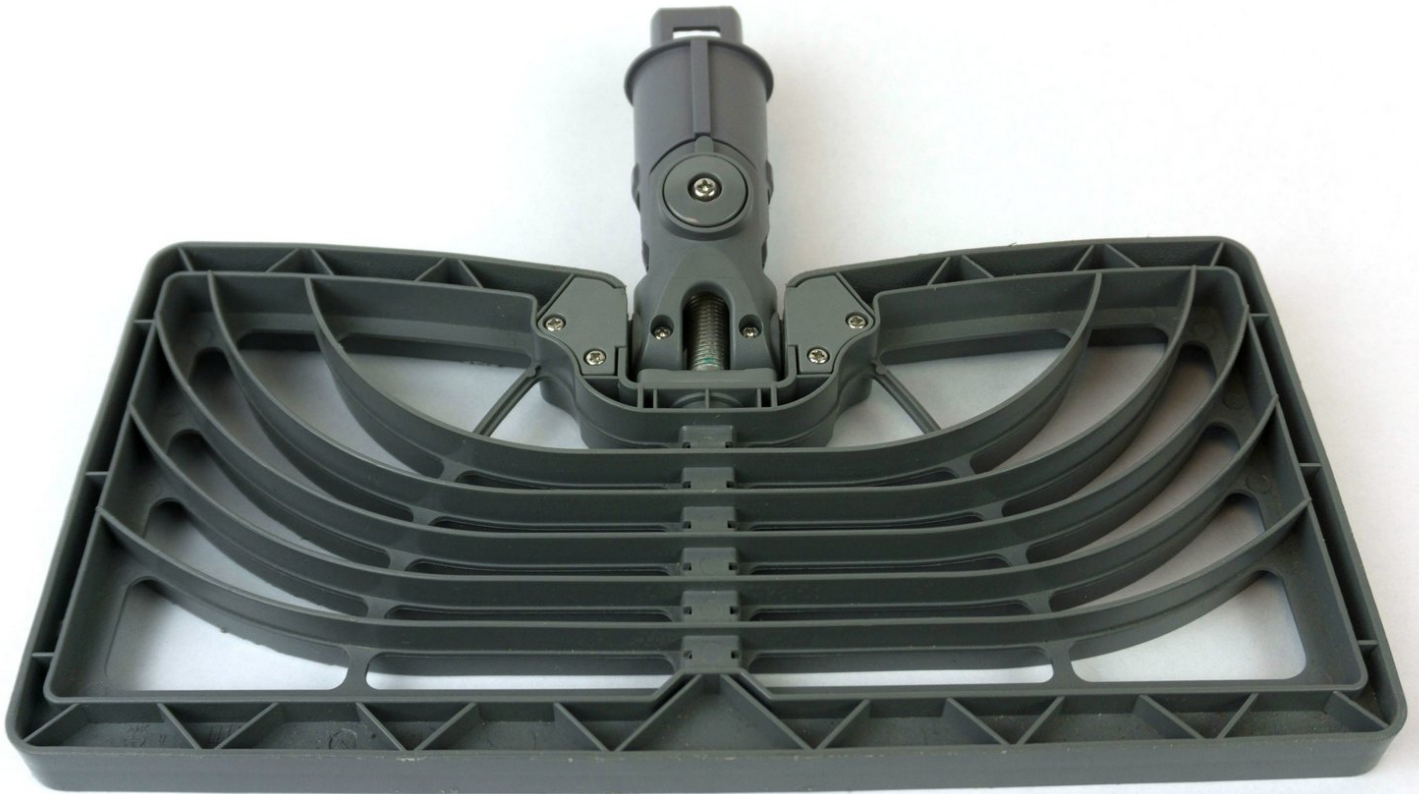




# Shark Professional Steam Pocket Mop Steam Nozzle Replacement

This guide will take you through the process of replacing the steam nozzle on your Shark Steam Mop. Do this if your mop is no longer emitting steam.

Written By: Michael Raymond



## INTRODUCTION

If your mop is not emitting steam then replacing the nozzle may help. Before doing any disassembly on your Shark Professional Steam Pocket Mop, make sure to unplug the mop and empty the water tank for your safety.



### TOOLS:

- [Phillips #2 Screwdriver](#) (1)
  - [Small Needle Nose Pliers](#) (1)
-

## Step 1 — Steam Nozzle



- Press the mop head release button to remove it from the steam mop body.

## Step 2



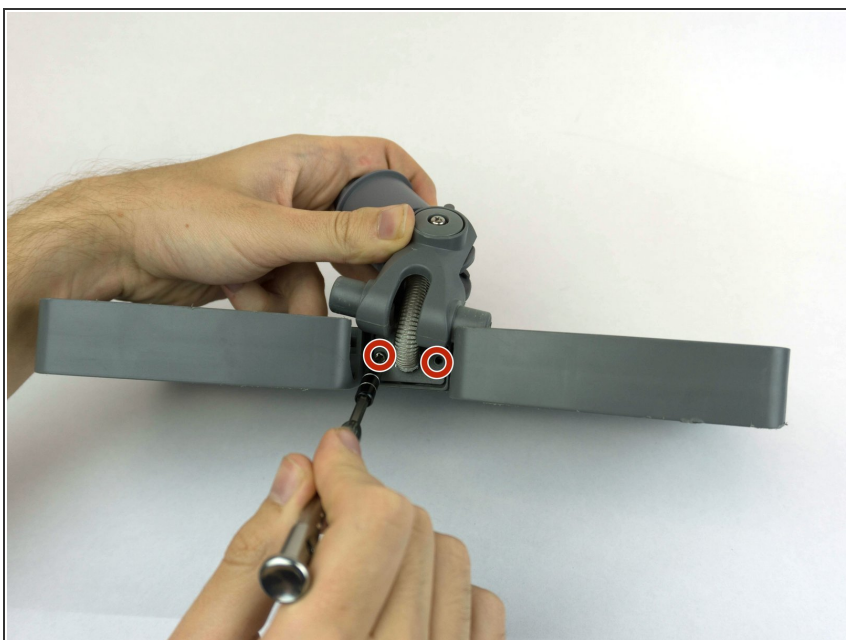
- Remove the four 10mm screws holding the joint assembly to the mop head with your Phillips #2 screwdriver.

### Step 3



- Remove the two plastic hinge covers by pulling the hinges out of the joint and sliding the covers off.

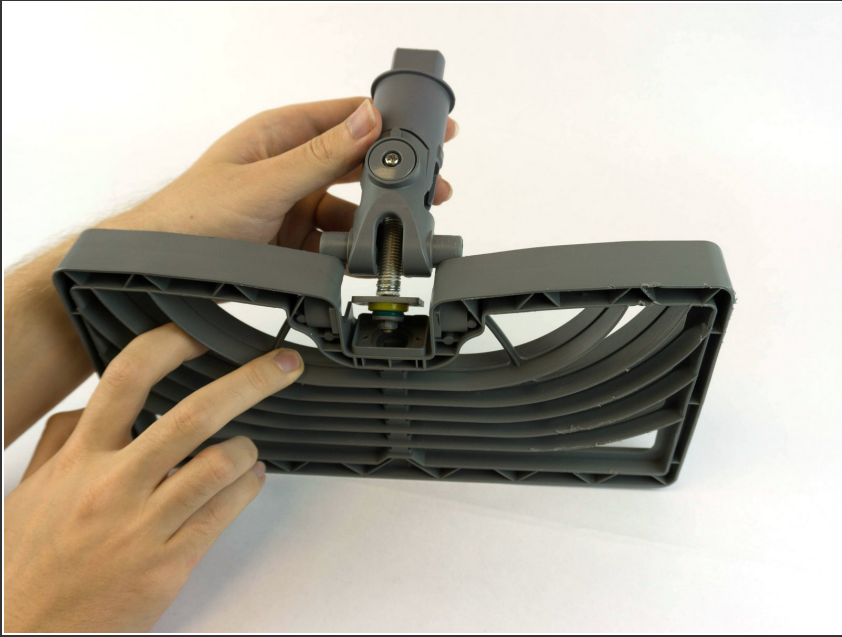
### Step 4



- Stretch joint assembly forward to expose two 11mm Phillips #2 screws on either side of the steam tube.
- Remove both screws.

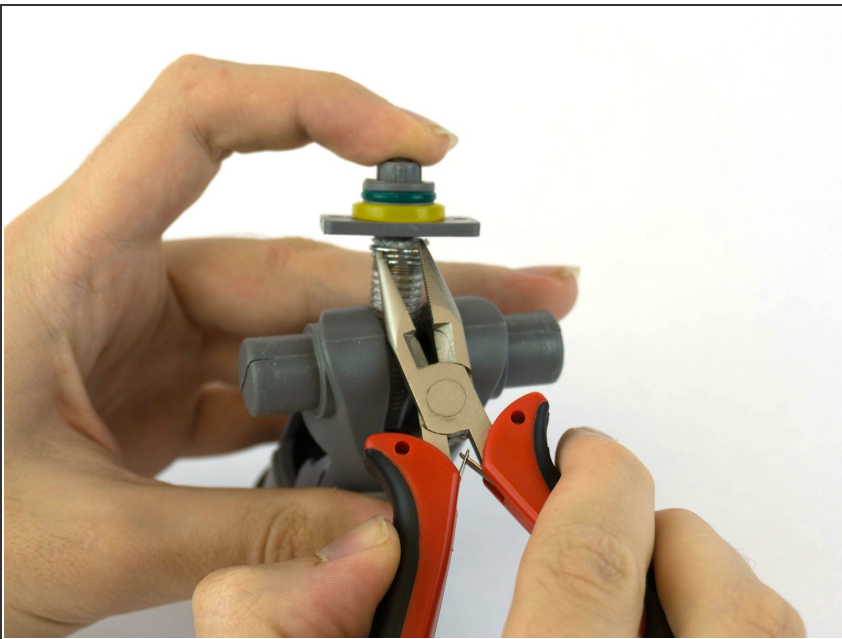


## Step 5



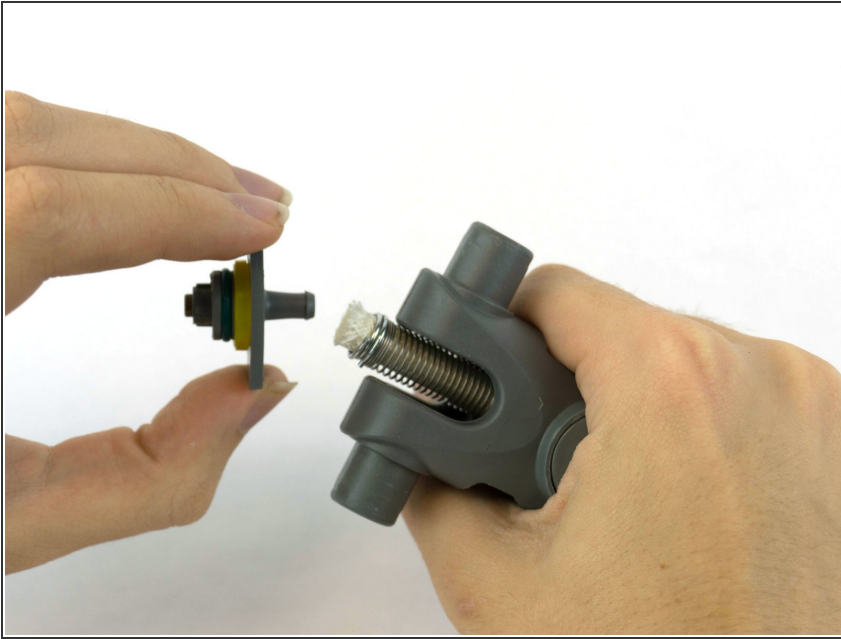
- Lift joint assembly out of hinge socket and pull upward with mild force to disconnect steam nozzle.

## Step 6



- Use needle nose pliers to compress metal clamp .

## Step 7



- Pull the nozzle out of the tube.

To reassemble your device, follow these instructions in reverse order.