



# Shark Rocket HV381 Motor Replacement

How to replace the motor in the Shark Rocket HV381.

Written By: Dandre Porter



---

## INTRODUCTION

This is a step by step guide that will teach you how to replace the motor in the Shark Rocket HV381. Make sure that you disassemble the roller, brush, wheels, and LED since any of these can cause trouble during the removal of the motor.



### TOOLS:

- [T15 Security Torx Screwdriver](#) (1)
  - [T10 Torx Screwdriver](#) (1)
  - [Flathead 3/32" or 2.5 mm Screwdriver](#) (1)
-

## Step 1 — Roller



- On the right-bottom of the body, pull down the black switch. You will hear an audible click when you detach the body from the vacuum head.

## Step 2



- Laying the vacuum head on the its right side, push the orange "Eject Roller" switch down. The Roller can now be removed with ease.

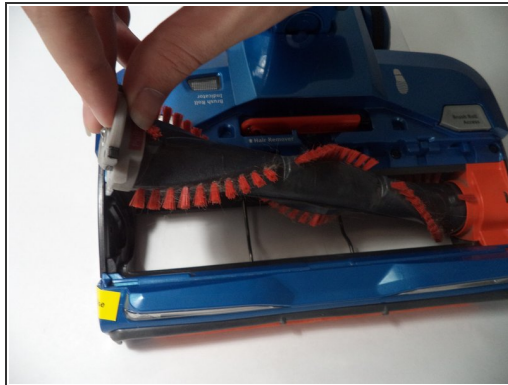
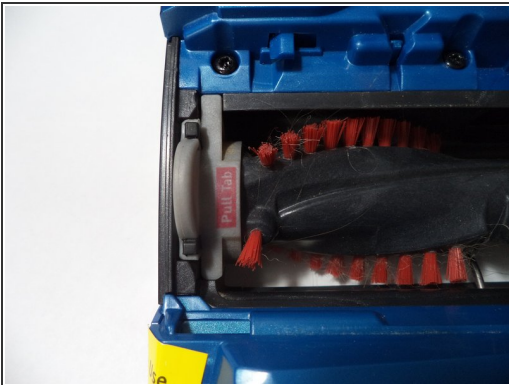


## Step 3 — Brush



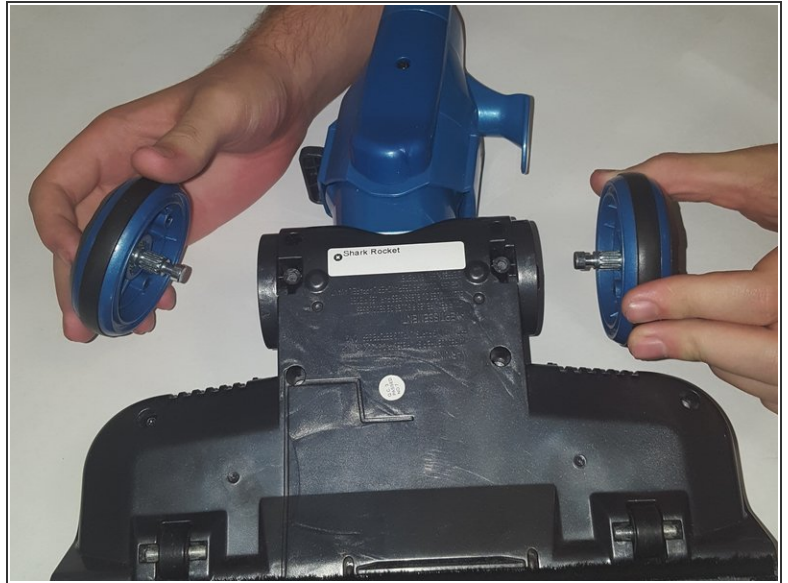
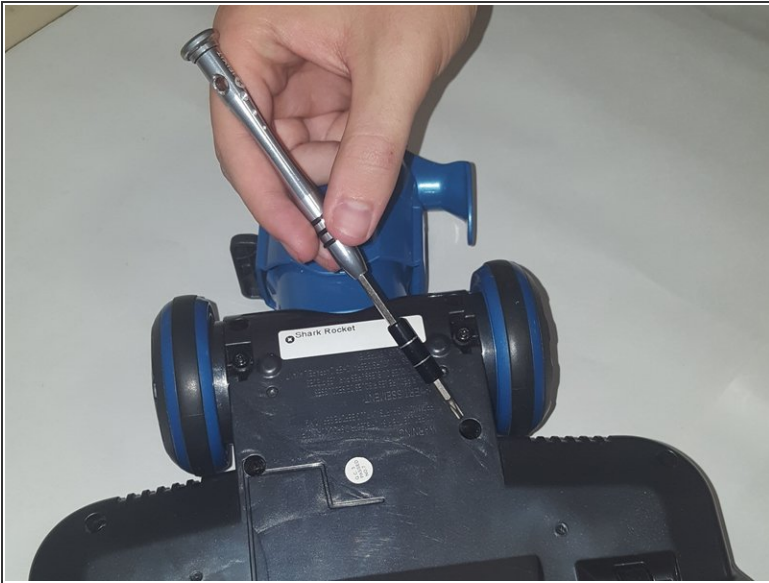
- On the top of the vacuum head is two grey "Brush Roller Access" buttons. Simultaneously press both buttons to eject the Roller Cover. Remove the Roller Cover by pulling it towards you and up.

## Step 4



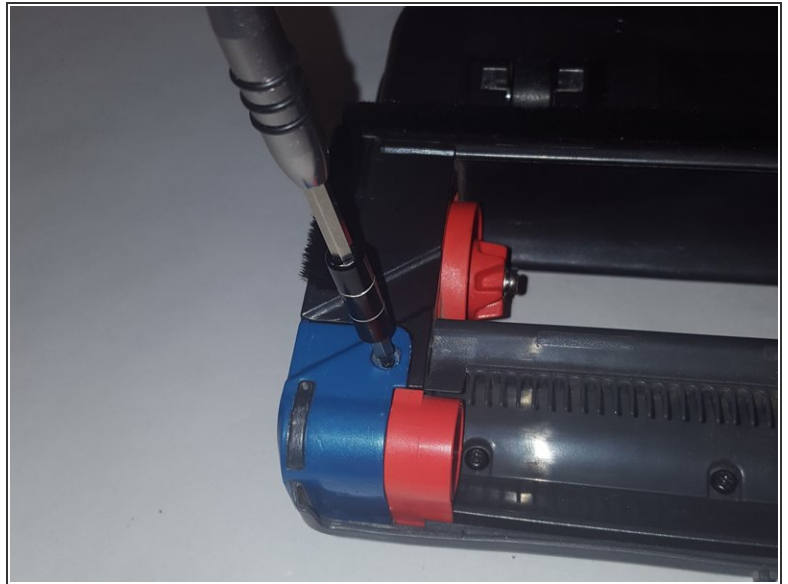
- The "Pull Tab" tab is located at the right. Pull the Tab up and to the right for removal.
- ⓘ The Brush is sticky so hold the vacuum head with one hand and give the tab a moderate tug.

## Step 5 — Wheel



- On the back of the vacuum head, locate and unscrew the four T15 screws. Once done the wheels can be removed.

## Step 6 — LED



- On the back of the vacuum head, located near the bottom, should be a row of screws. Using the T15 Screwdriver, remove all the screws on the bottom and the sides.

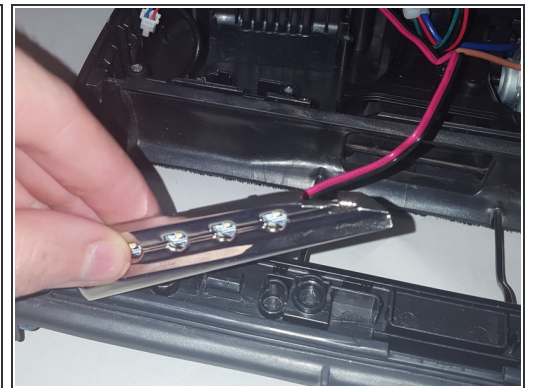
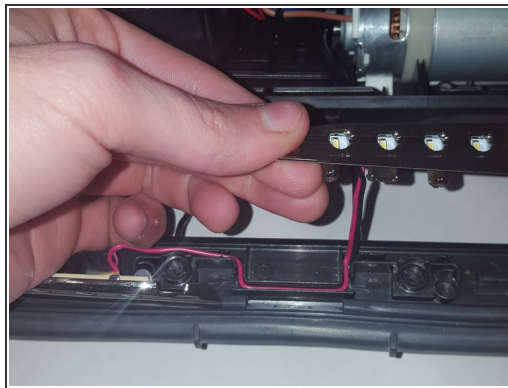
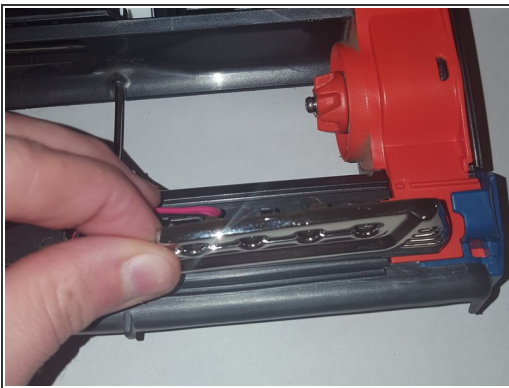


## Step 7




- On the top side of the vacuum head, where the LED is located, use the Small Flathead screwdriver to pry open the cover. There should be no resistance.

## Step 8



- Picking the LED from the side, pull upwards to unwind the wires from their tracks.

 Make sure that you are gentle because the wires are very fragile. One strong pull could easily snap them from the LED.

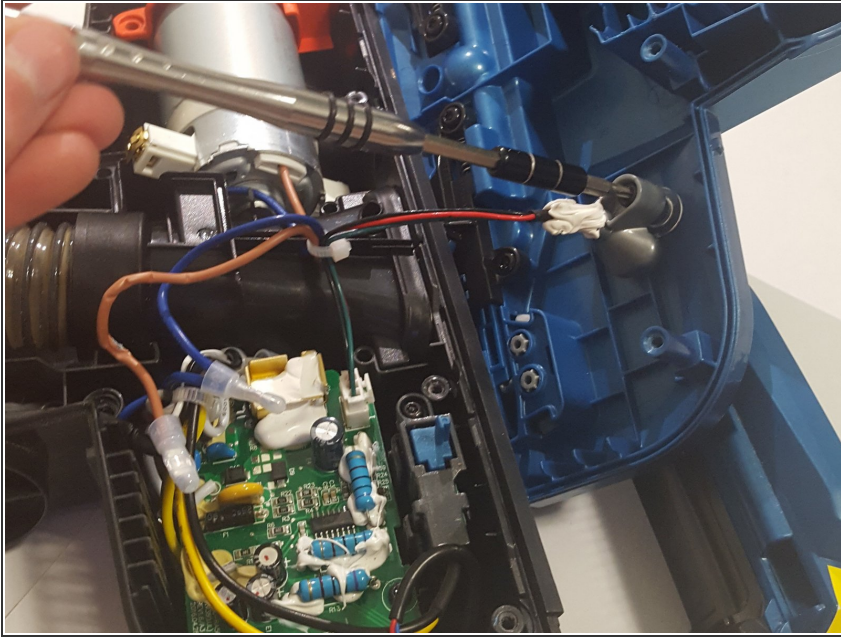
## Step 9 — Motor



- On the top of the vacuum head, to the tight of the 'Brush Roller Access' buttons, locate the two screws parallel to each other. Using the T15 to unscrew these two, lift up the panel by the flap as shown.
- ⚠ Careful while lifting up the panel! There are wires that are connected to it as shown below which are fragile.

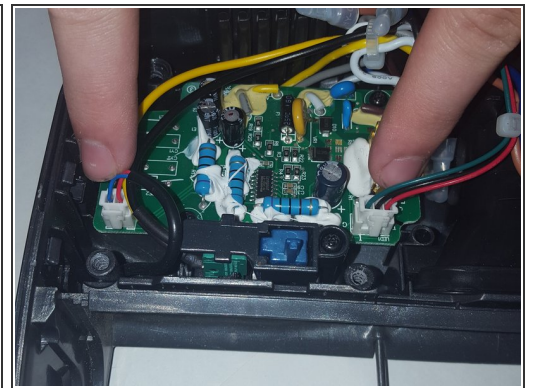
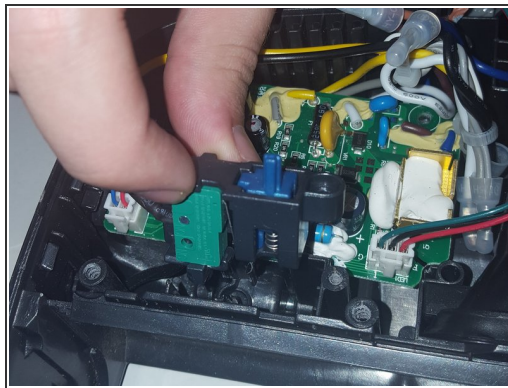
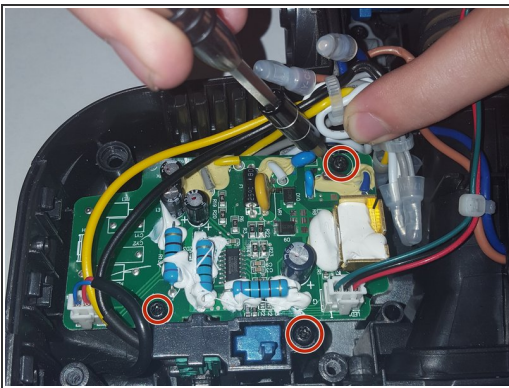


## Step 10



- Using the T10 screwdriver, unscrew the screw as shown. This should free the panel from the wires. Place the panel to the side.

## Step 11



- Using the T10 screwdriver, unscrew the three screws as shown in the picture. It is important that you take your time to unscrew all three at the same pace. We found that increments of half a turn worked best.
- The decision to unclip the wires from the motherboard or remove the blue device doesn't matter on order. Complete both steps before proceeding.

⚠ As easy as unclipping the wires may sound, you must be careful to avoid breaking them.



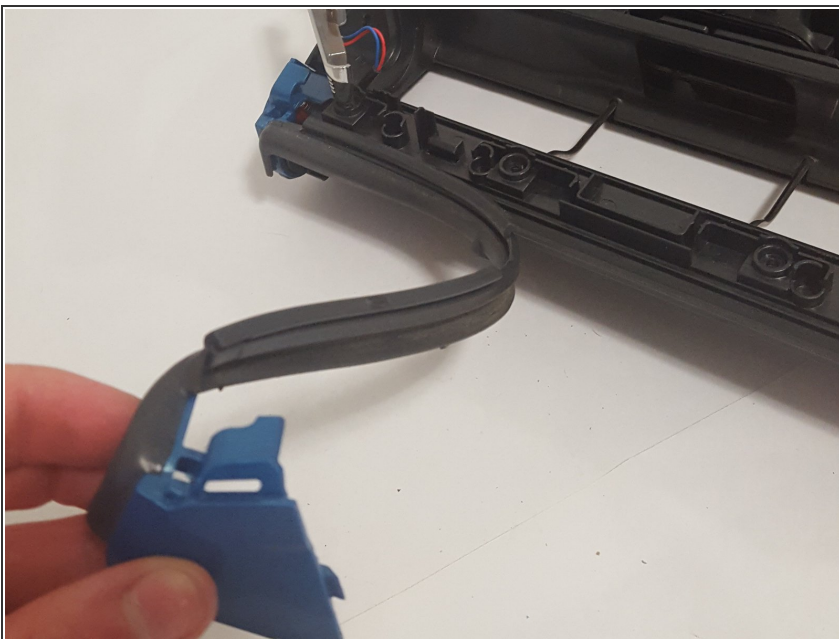
## Step 12



- Set the freed motherboard off to the side, but take note of the wires connected to the motherboard. On the bottom of the vacuum head, while you should have removed these four screws while disassembling the wheels double check then remove the panel. Doing this will expose the engine. Using your fingers and the flat head, push the blue piece forward.

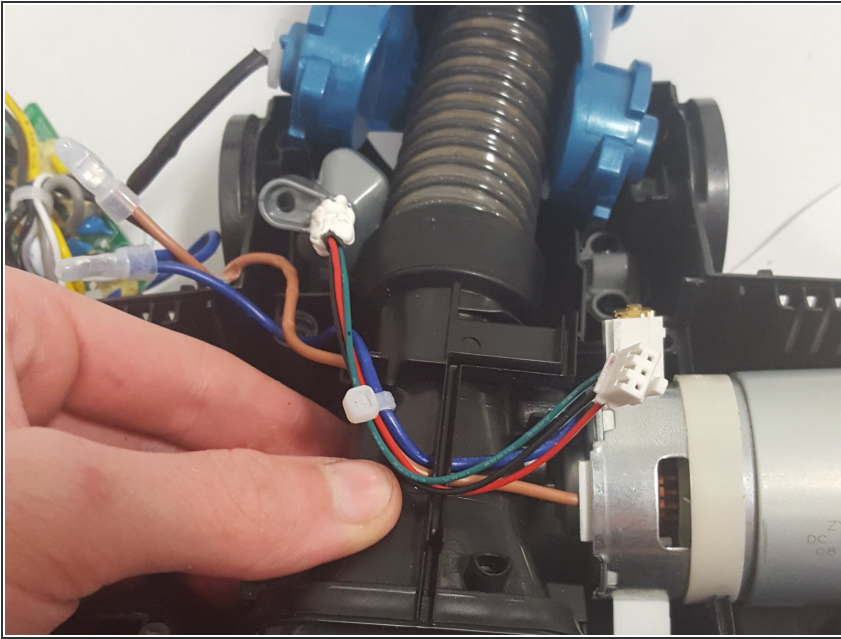
⚠ The only way we could push the blue piece forward without difficulty was to put the Flathead in the center of the part mentioned above and push with your thumb. It comes right out if done correctly.

## Step 13



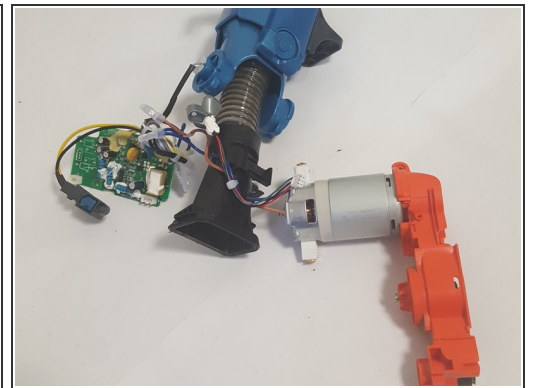
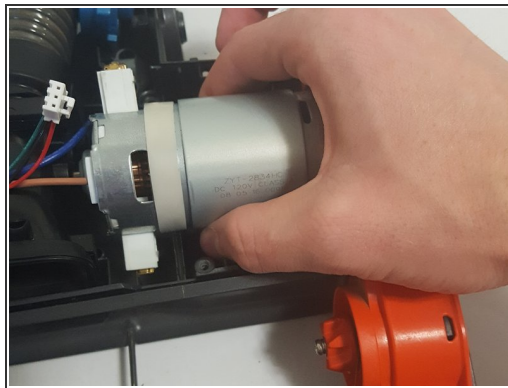
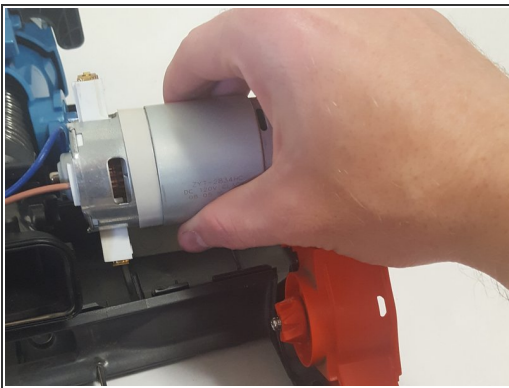
- Slowly pull the thin wire from the front of the vacuum cleaner out of the way. It will still be connected to the vacuum cleaner but now out of your way.

## Step 14



- Pinch the hose, move it upwards, and out of your way as shown. The wires will not offer any problems, however, despite how the picture.

## Step 15



- Firmly grasping the engine, pull it upwards until you hear either a soft click or loud crack. We experience both yet the vacuum was able to function just fine afterward. Keep moving it upwards until you can take the engine, motherboard, and hose out.

## Step 16



- You now have access to the engine! This step is entirely optional, but the orange rotary piece can be removed using the T10 Screwdriver on the screws shown here.

To reassemble your device, follow these instructions in reverse order.