



Shark Rotator Lift-Away Speed Belt Replacement

How to replace or adjust the Shark Rotator Lift-Away Speed belt if it becomes offset or if the brushroll does not spin.

Written By: Samantha Woo



INTRODUCTION

The vacuum belt keeps the brushroll spinning properly. If your brushroll is not spinning or is spinning irregularly, you may need to check the placement and/or quality of the belt. This guide will show you how to access and remove the belt.



TOOLS:

- [T9 Torx Screwdriver](#) (1)
 - [T20 Torx Screwdriver](#) (1)
-

Step 1 — Brushroll



- ⚠ Make sure the vacuum is turned off and unplugged before proceeding.
- Locate the release button at the top of the vacuum pod next to the handle.
- Use the handle to lift the pod up off of the vacuum nozzle while pressing the release button.
- ⓘ Removing the pod is optional, but it may be easier to locate blockages or access the motor and belt if you do so.

Step 2



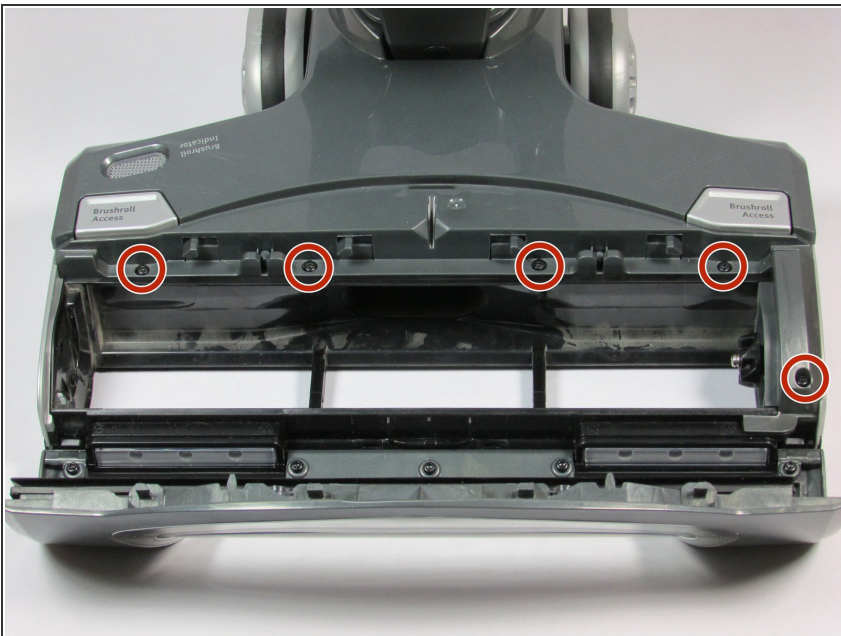
- Press the Brushroll Access buttons on the top of the nozzle to reveal the brushroll compartment.

Step 3



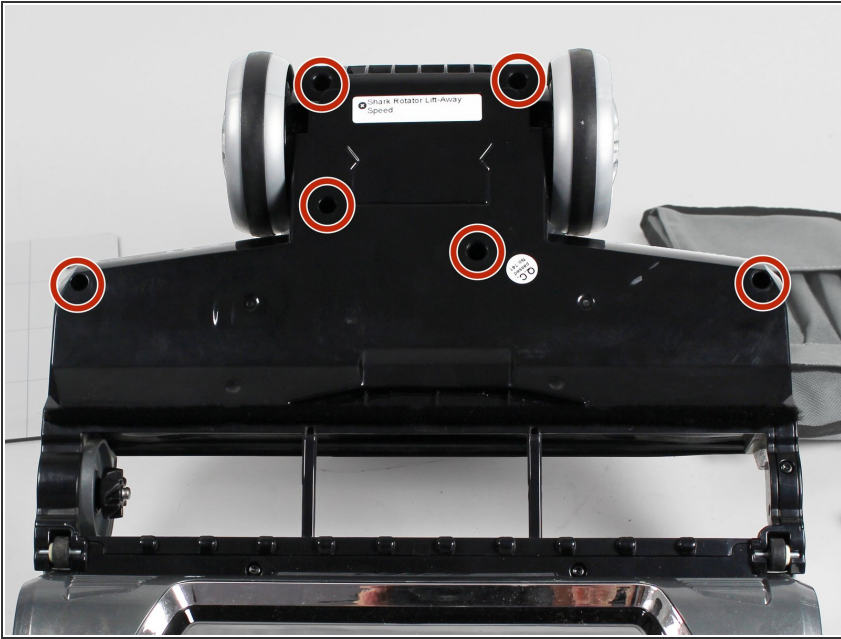
- Lift the brushroll out by using the pull-tab on the left side.
- ❗ You can test the brushroll once it has been inserted by plugging the vacuum in and running the vacuum in carpet mode. The brushroll indicator light should be a solid green color.

Step 4 — Brushroll Motor



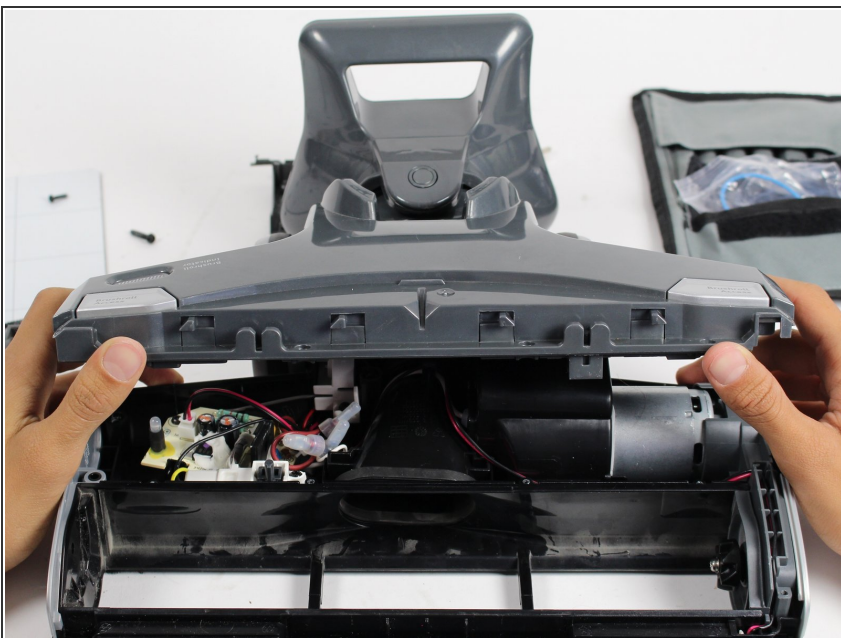
- Remove the five 5mm Torx #9 screws on the front side.

Step 5



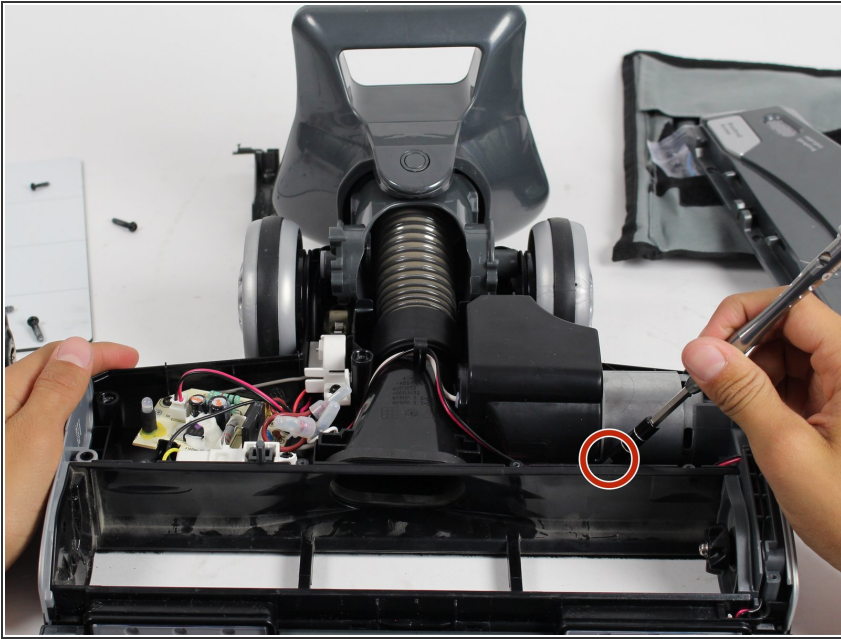
- Remove the six 7.5mm Torx #20 screws on the bottom face of the nozzle.
- ⓘ A screwdriver extension may be necessary to reach the screw closest to the center of the nozzle.

Step 6



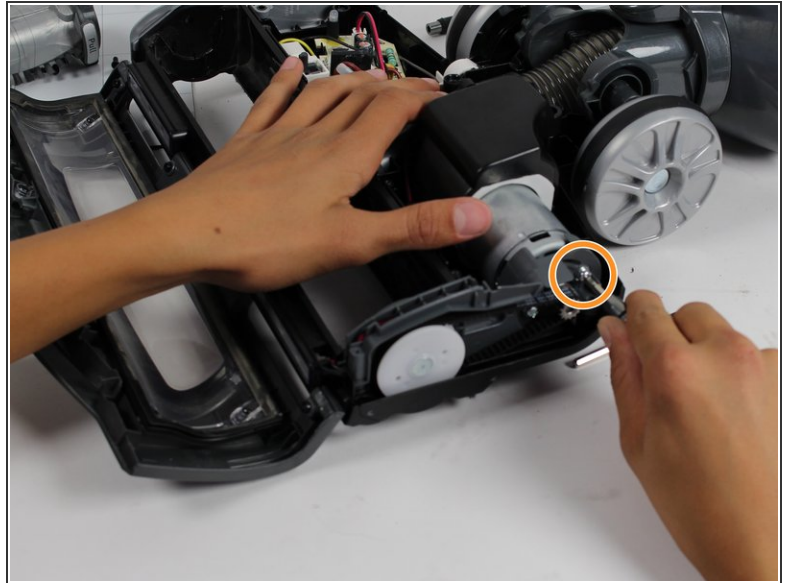
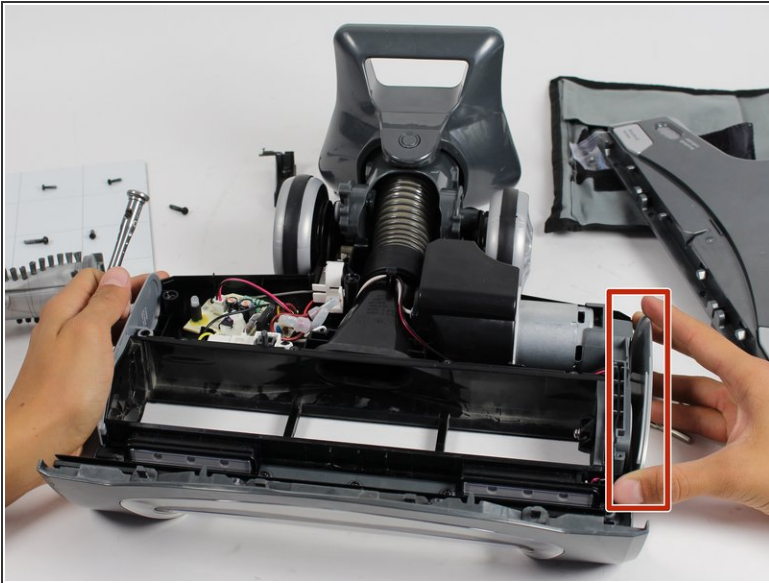
- Remove the top panel by lifting the top piece off of the bottom.
- ⓘ There will be loud clicking noises.


Step 7



- ① If you are trying to remove the belt, you may skip to the next step.
- Remove the 7.5mm Torx #20 screw in front of the motor.
- ① The motor is the gray block on the right side of the floor nozzle (when the nozzle faces towards you).

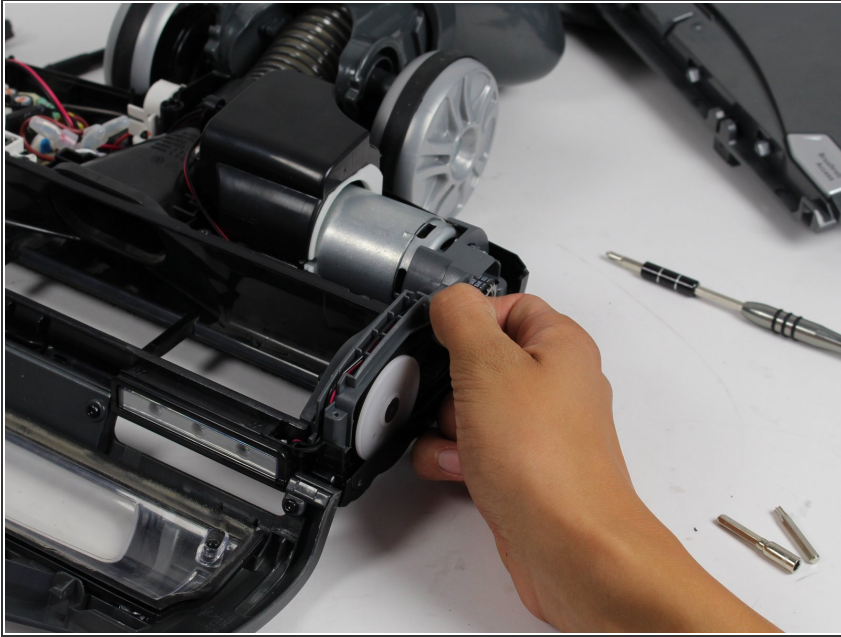
Step 8



 If you are trying to remove the belt, you may skip to the next step.

- Remove the panel to reveal the motor screw.
- Remove the 7.5mm Torx #20 motor screw.
- Remove the motor.

Step 9 — Brushroll Belt



- Remove the black belt located on the right face of the vacuum nozzle.

To reassemble your device, follow these instructions in reverse order.