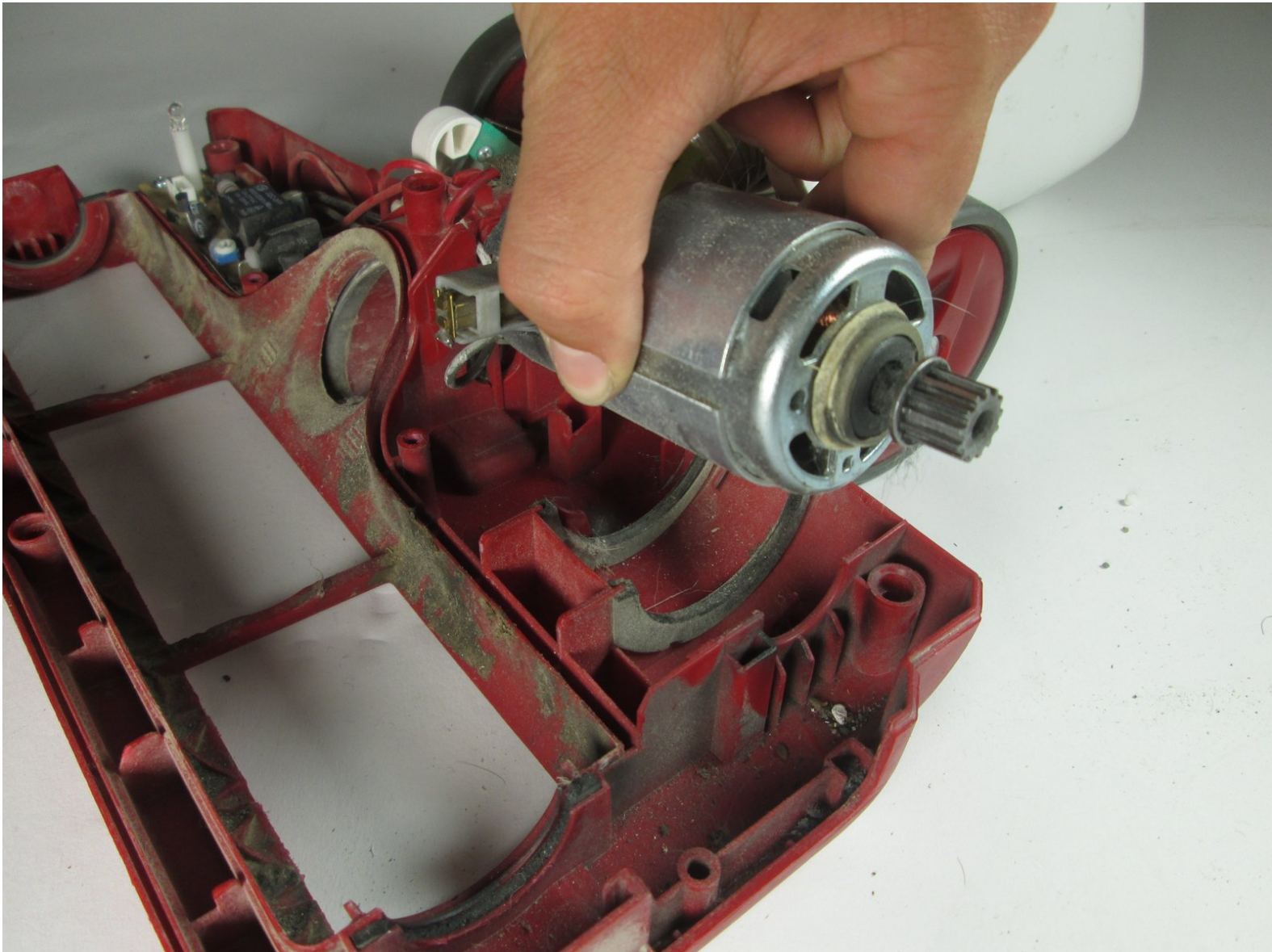




Shark Rotator NV502 Roller Brush Motor Replacement

Replacing the roller brush motor on the Shark Navigator NV502.

Written By: Caroline Swanson



INTRODUCTION

When the roller brush motor breaks, the roller brush will not spin. The motor can break due to electrical malfunctions or even broken pieces inside.

TOOLS:

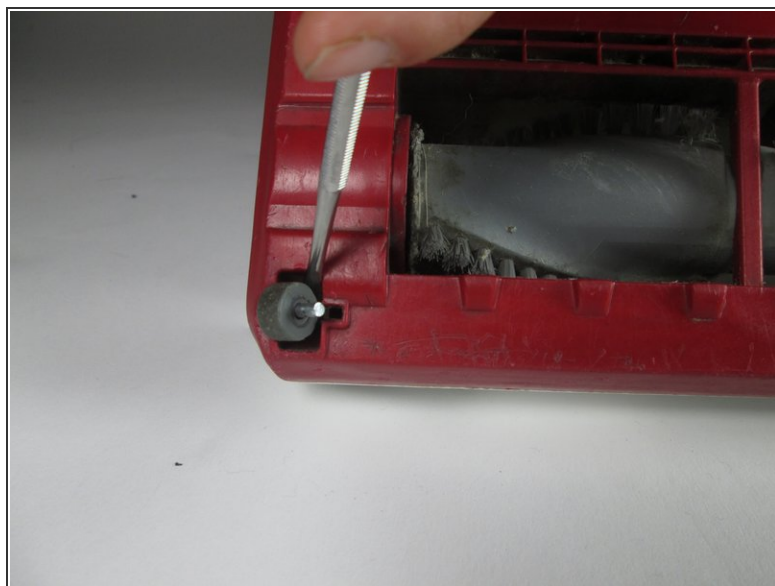
- [Metal Spudger](#) (1)
 - [Phillips #2 Screwdriver](#) (1)
-

Step 1 — Roller Brush



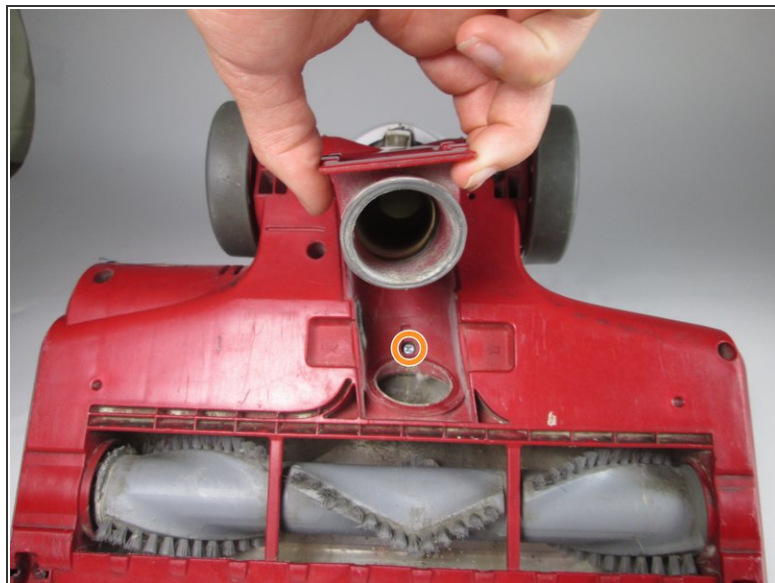
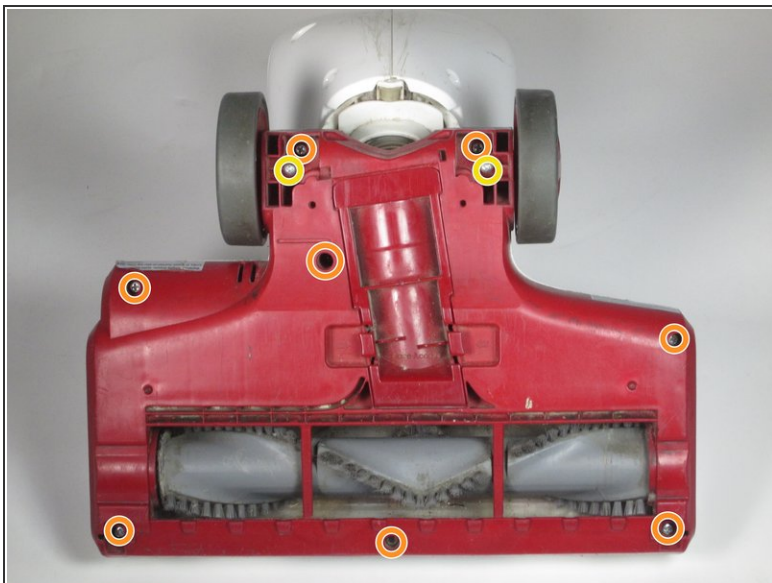
- Pull the handle while pressing the lift away button to remove the body of the vacuum.

Step 2



- Flip the base of the vacuum over to access the bottom.
- Remove the two small wheels with a metal spudger.

Step 3



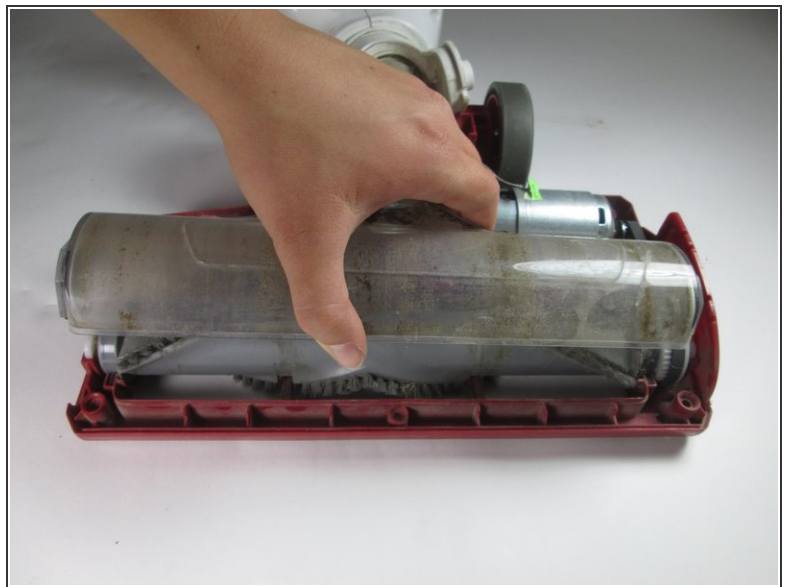
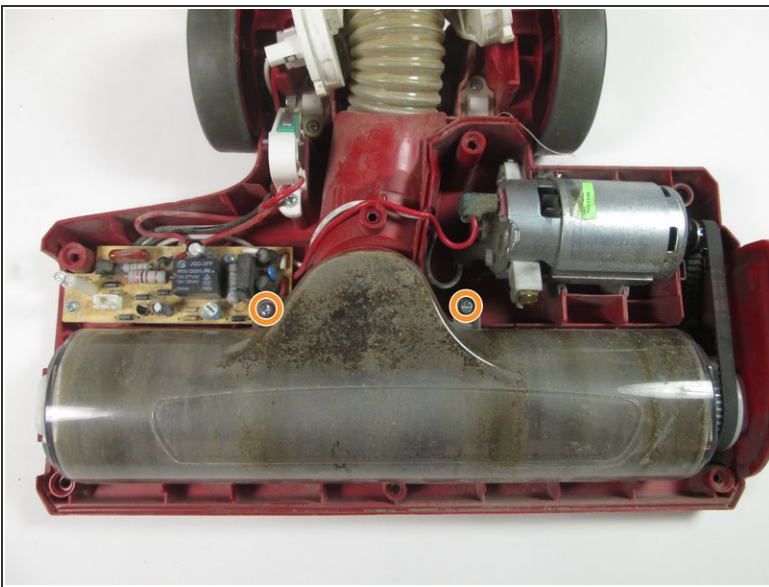
- Remove the nine 16 mm screws using the Phillips #2 Screwdriver. Press on the side tabs in the middle of the panel and pull up to reveal the screw under the hose connection.
- Remove the two 13.5 mm screws using the Phillips #2 Screwdriver.

Step 4



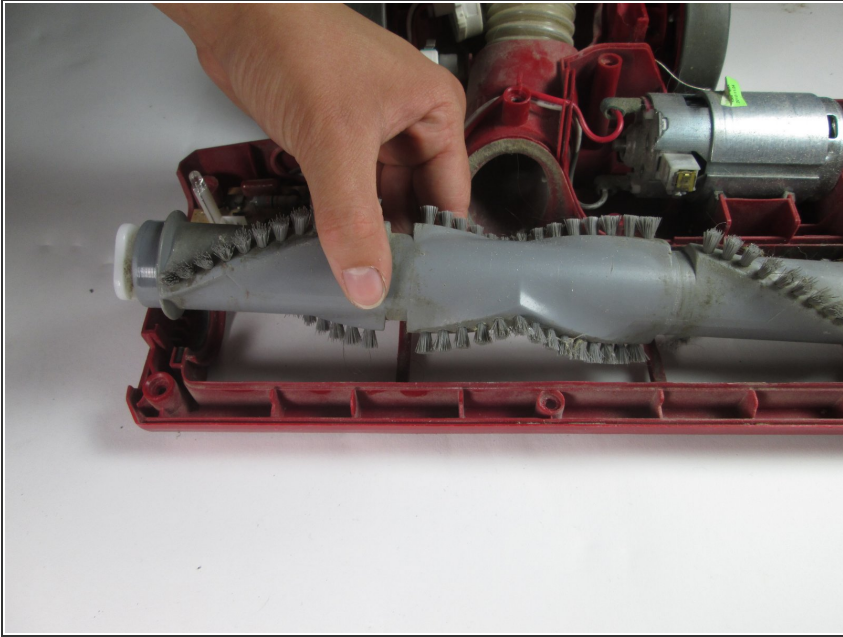
- Pull up on the cover and move it to the side.
- Remove the wire attached to the base by squeezing the pin and pulling up.

Step 5



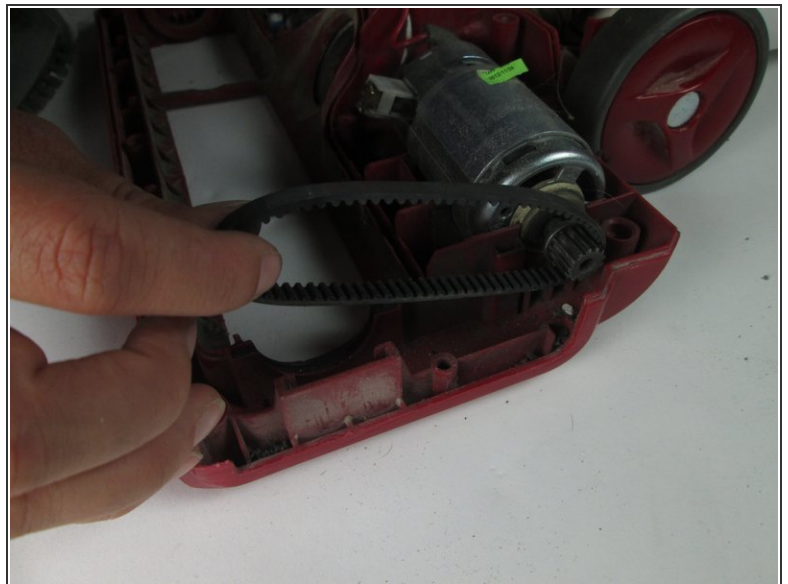
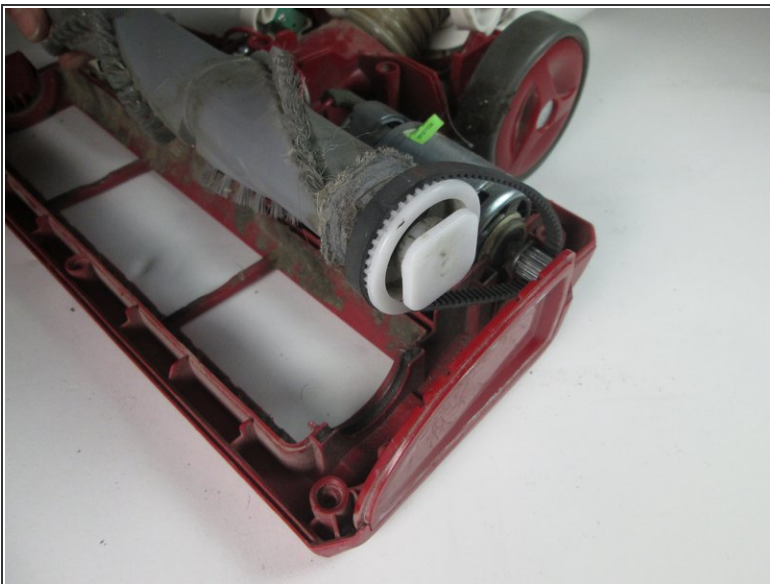
- Remove the two 11 mm screws using the Phillips #2 screwdriver.
- Lift the roller brush cover up.

Step 6



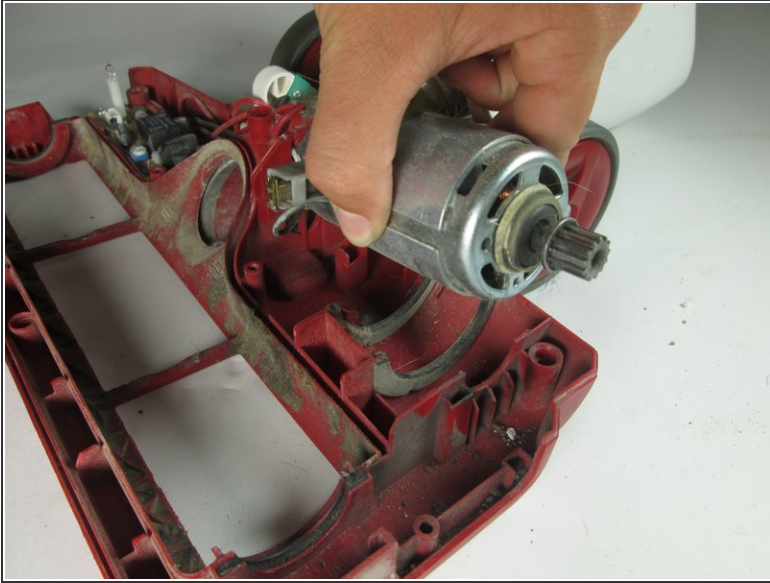
- Pull out the roller brush.

Step 7 — Roller Belt



- Remove the roller belt from around the roller brush and the motor gear.

Step 8 — Roller Brush Motor



- Lift the motor out of the base.
- Disconnect the pins attaching the wires to the motor by pulling on the pins.

To reassemble your device, follow these instructions in reverse order.