



# Shark Rotator Powered Lift-Away Head Nozzle Disassembly

This guide will teach you how to disassemble the head nozzle in order to access the roller brush and headlight.

Written By: Dan lee



---

## INTRODUCTION

This disassembly is necessary to remove multiple features such as the brush, the brush belt, and the headlights.

---

### TOOLS:

- [64 Bit Driver Kit](#) (1)

*you will need the Phillips, Flathead, and Torx drivers for the disassembly.*

---

## Step 1 — Shark Rotator Powered Lift-Away Head Nozzle Disassembly



- Push lift away button and pull the handle up to separate the body from the wand section.

## Step 2



- Push lift away button on the wand then lift up on the top section to separate.

### Step 3



- Tilt the wand shaft backwards for convenient.

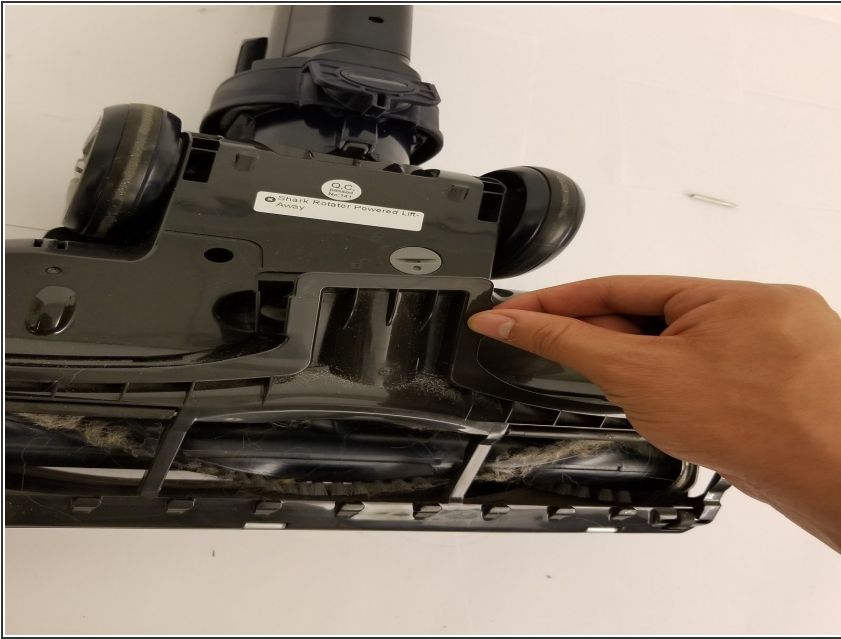
### Step 4



- Lay the head nozzle piece upside down.
- Locate and rotate the three gray taps to the unlock position.

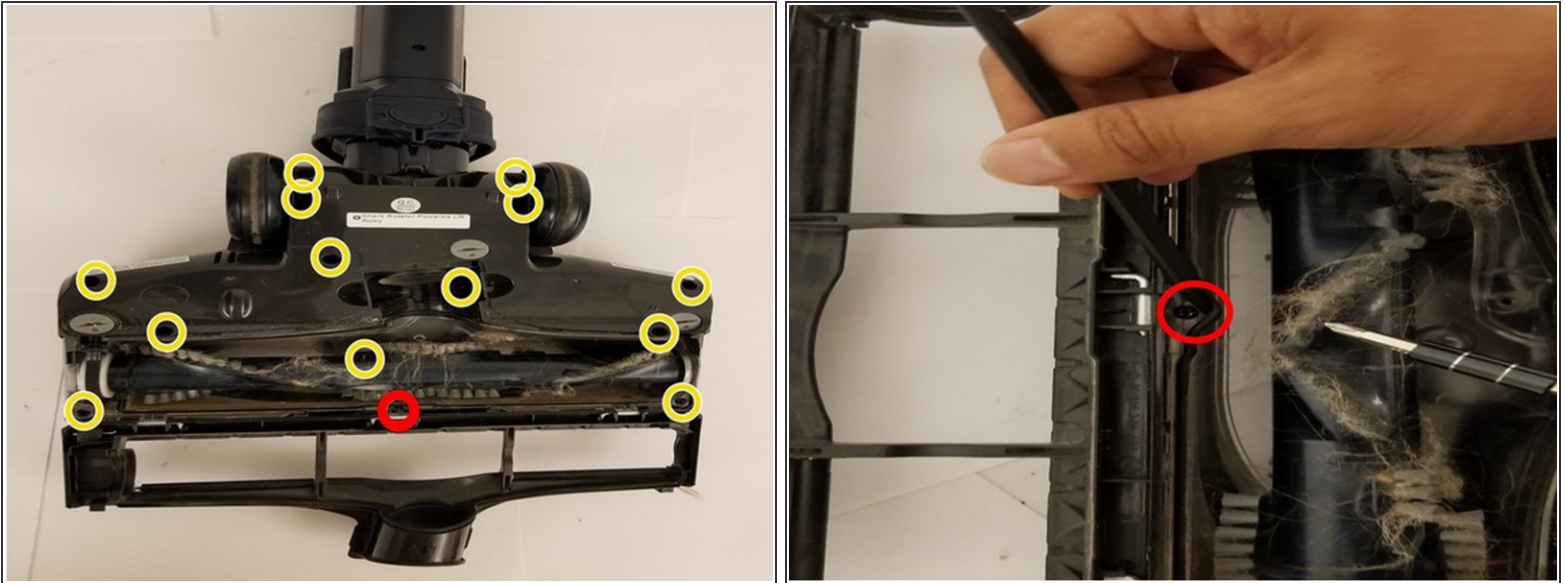


## Step 5



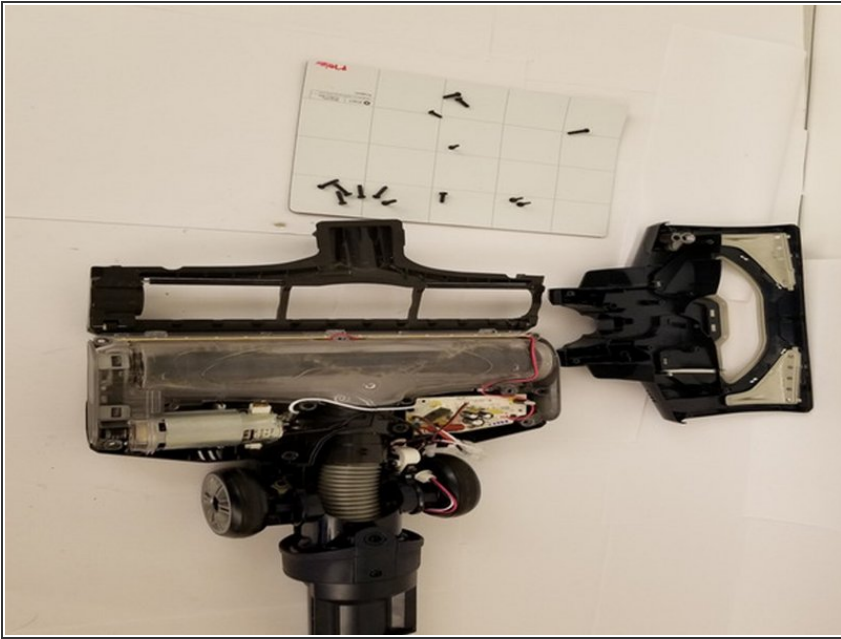
- With your fingers, pry and pull the brush cage open.

## Step 6



- Remove the 13 screws (circled in yellow) using a phillips screwdriver.
- ⚠ Be sure to keep track of which screws go into which hole.
- Remove the one screw (circled in red) that has a Torx head.
- ⚠ The Torx screw is hidden under a rubber gasket. Carefully, lift up the gasket without damaging it to access this screw.

## Step 7



- Lift up the top cover now that all of the screws have been removed.

To reassemble your device, follow these instructions in reverse order.