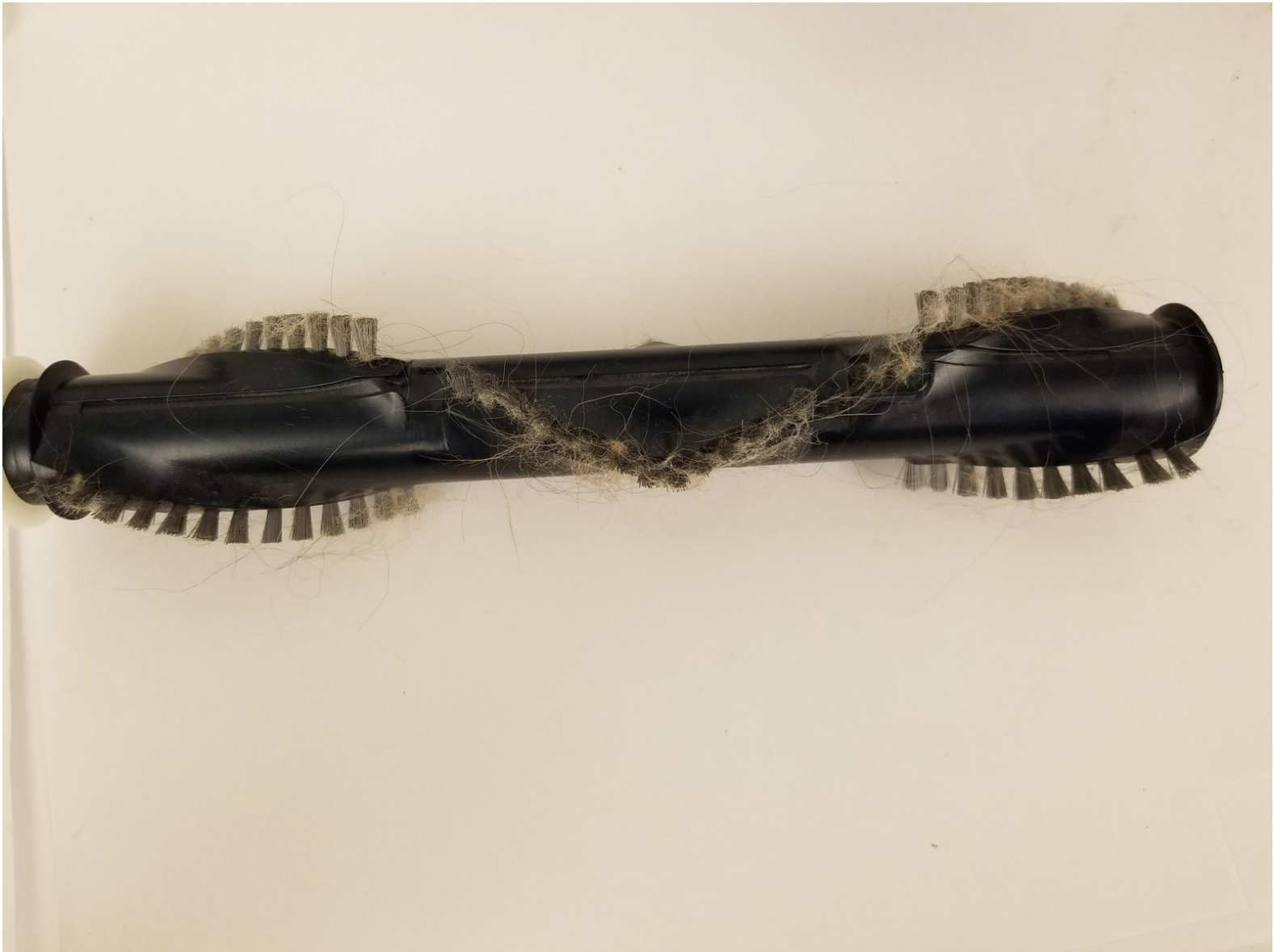




# Shark Rotator Powered Lift-Away Roller Brush Replacement

This guide will help you replace the brush of your Shark Rotator Powered Lift-Away vacuum.

Written By: Cameron Ngai



---

## INTRODUCTION

When the Shark Rotator Powered Lift-Away is difficult to maneuver or fails to pick up dirt, inspect the roller brush for clogs or damage. Excessive obstructions will cause the vacuum to not operate as intended.



### TOOLS:

- [64 Bit Driver Kit](#) (1)

*you will need the Phillips, Flathead, and Torx drivers for the disassembly.*

---

## Step 1 — Shark Rotator Powered Lift-Away Head Nozzle Disassembly



- Push lift away button and pull the handle up to separate the body from the wand section.

## Step 2



- Push lift away button on the wand then lift up on the top section to separate.

### Step 3



- Tilt the wand shaft backwards for convenient.

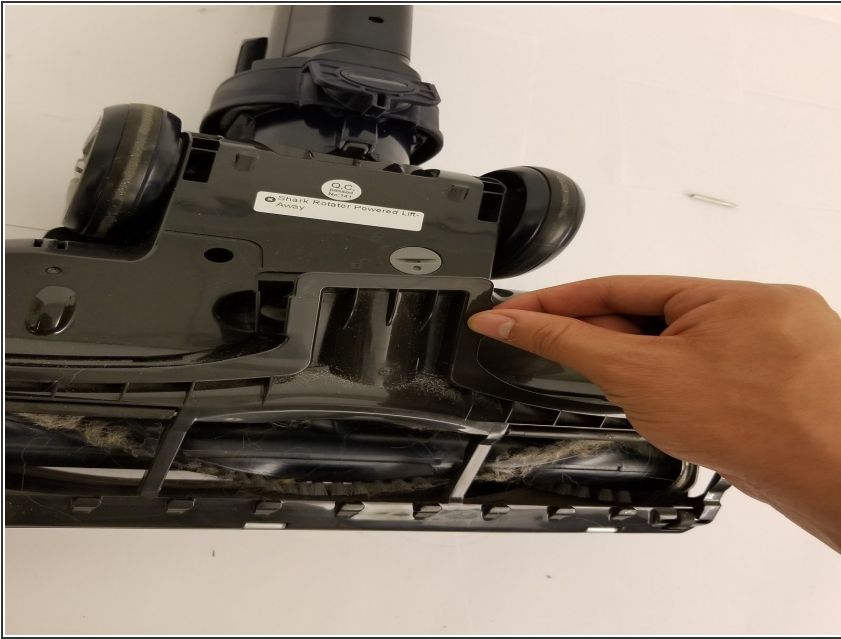
### Step 4



- Lay the head nozzle piece upside down.
- Locate and rotate the three gray taps to the unlock position.

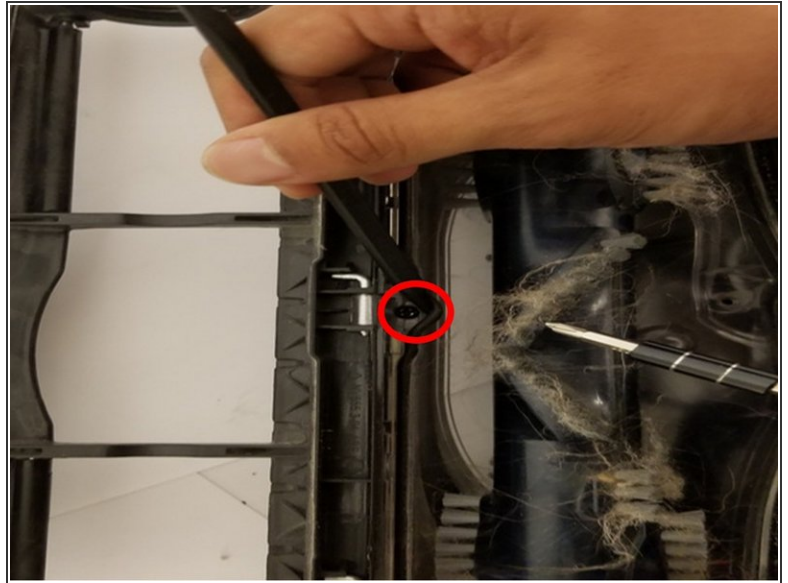
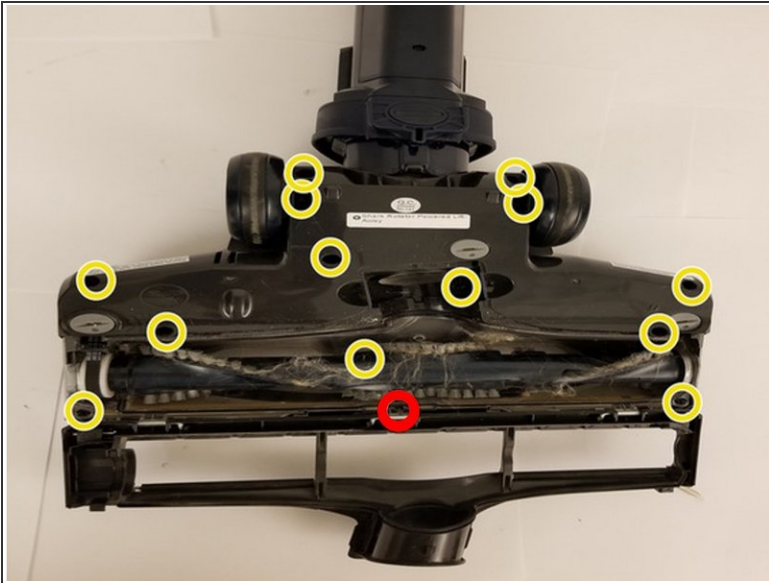


## Step 5



- With your fingers, pry and pull the brush cage open.

## Step 6



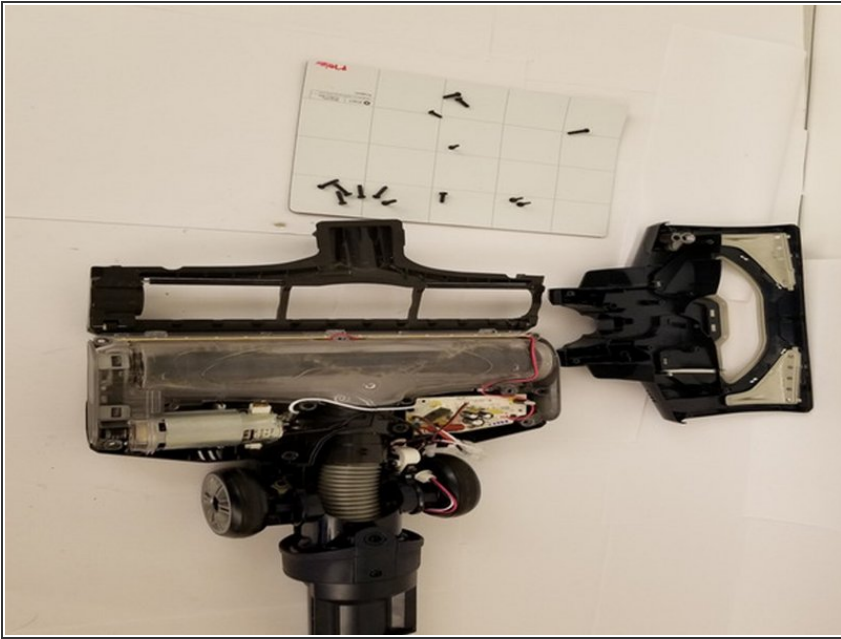
- Remove the 13 screws (circled in yellow) using a phillips screwdriver.

⚠ Be sure to keep track of which screws go into which hole.

- Remove the one screw (circled in red) that has a Torx head.

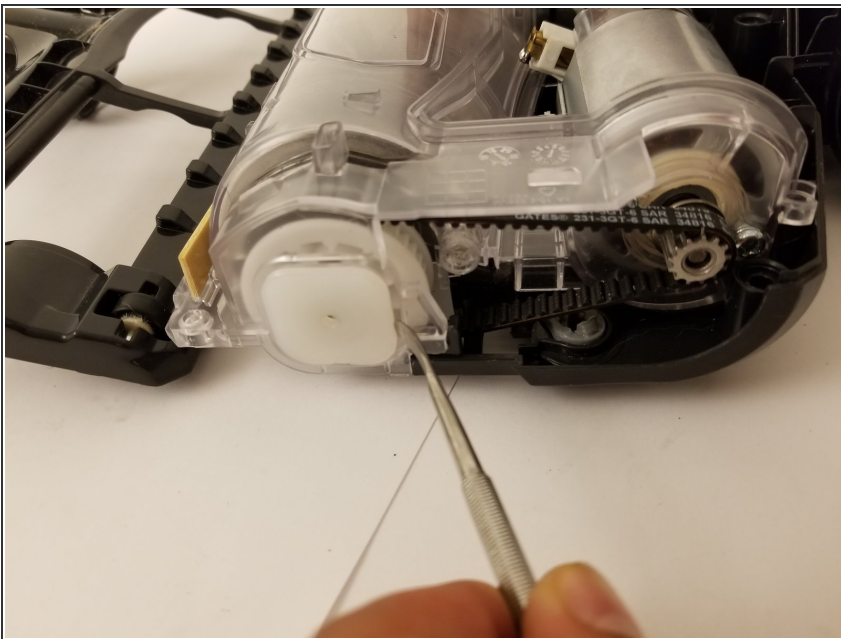
⚠ The Torx screw is hidden under a rubber gasket. Carefully, lift up the gasket without damaging it to access this screw.

## Step 7



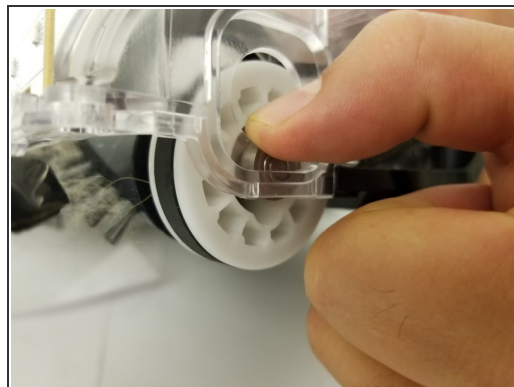
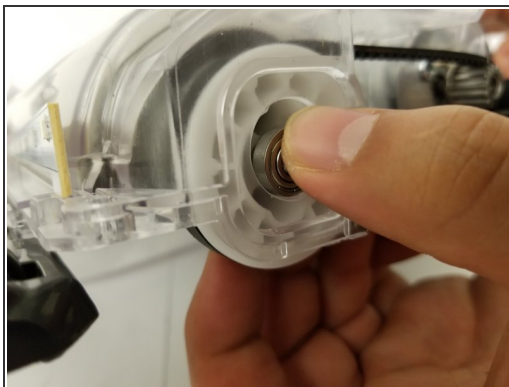
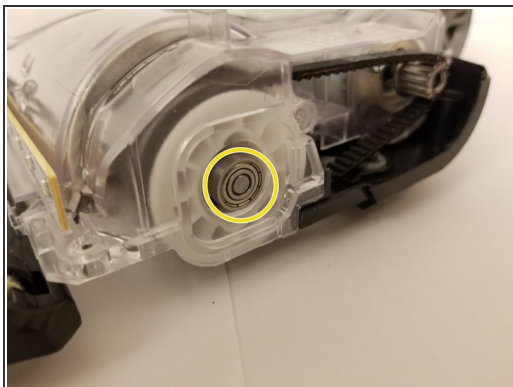
- Lift up the top cover now that all of the screws have been removed.

## Step 8 — Roller Brush



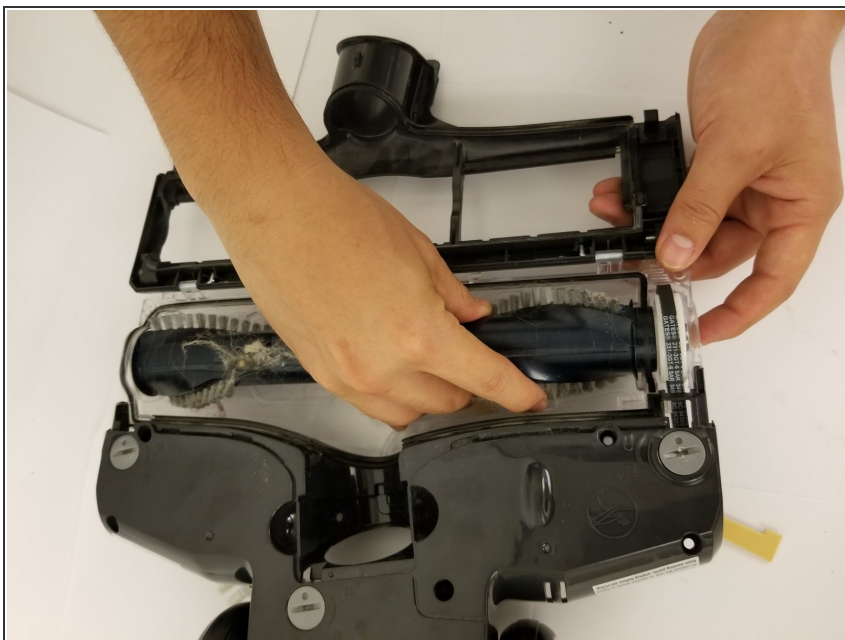
- Remove white cap with a Flathead screwdriver or any other wedge-like tool.

## Step 9



- Gently push piece in.
- Pull piece down and out of the container.

## Step 10



- Turn vacuum head over to remove brush.

To reassemble your device, follow these instructions in reverse order.