



Shark Rotator Powered Lift-Away Speed Hose Replacement

How to change the suction hose from the Shark Rotator Powered Lift-Away Speed.

Written By: Sujei Ruano



INTRODUCTION

A damaged hose will not allow the vacuum to function properly. This guide will assist in the replacement process. The hose is electrically attached to the other components of the vacuum. Removal of the hose will require electrical components.



TOOLS:

- [Spudger](#) (1)
 - [T20 Torx Screwdriver](#) (1)
 - [Flush Wire Cutters](#) (1)
 - [Soldering Iron](#) (1)
-

Step 1 — Hose



- Press down on the hose release button and pull away from the vacuum

Step 2



- Press down on the wand release button and remove the wand from the vacuum.

Step 3



- Press down on the handle release button and pull the wand away from the vacuum.

Step 4



- Remove five 13.4 mm screws from the handle with a T20 Torx bit.

Step 5



- Using a T20 Torx bit, remove the two 13.4 mm screws from the front of the nozzle.

Step 6



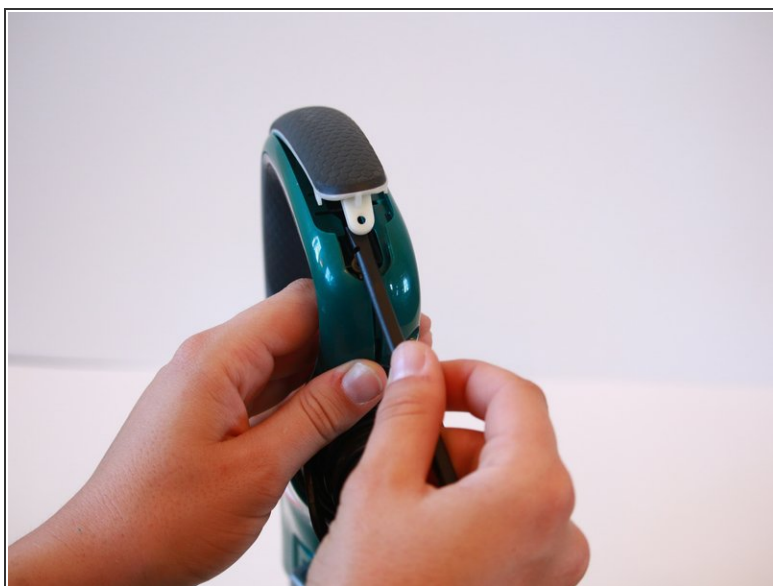
- Remove the neck ring by placing a spudger under the brace and lifting outwards.
- ⓘ It may be helpful to use a heat gun on the brace and then attempt removing with a spudger.

Step 7



- Run the spudger along the center seam of the handle, pulling it apart as you go.

Step 8



- Remove the single 13.4 mm screw at the bottom of the handle grip and then lift the grip with a spudger.

Step 9



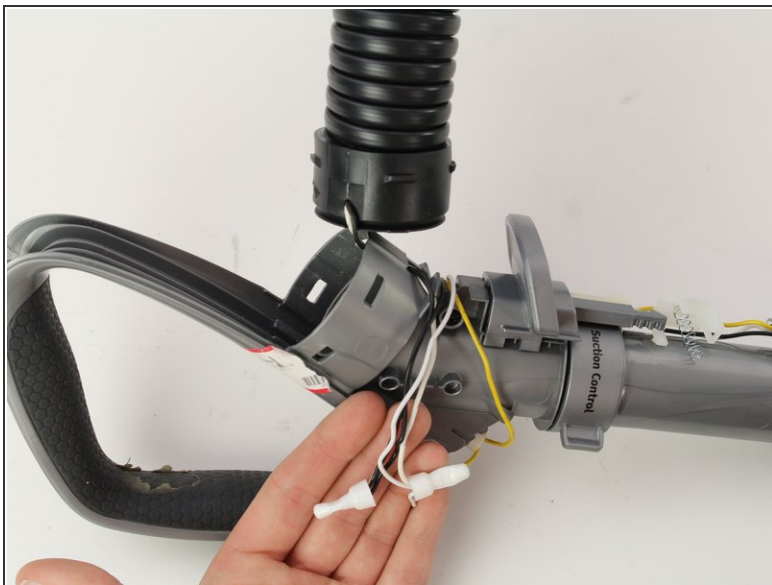
- Remove the single 13.4 mm screw from underneath the handle grip. You are then able to open the handle using a spudger and pulling the pieces apart.

Step 10



- Using two spudgers, unclip the hose from the handle.

Step 11



- Use wire cutters to clip the white and black wire that connect the hose to the handle.
- ⓘ Soldering or wire connectors are necessary for reassembly.
- ⚠ Any time you are dealing with electrical components, be sure the device is unplugged.

To reassemble your device, follow these instructions in reverse order.