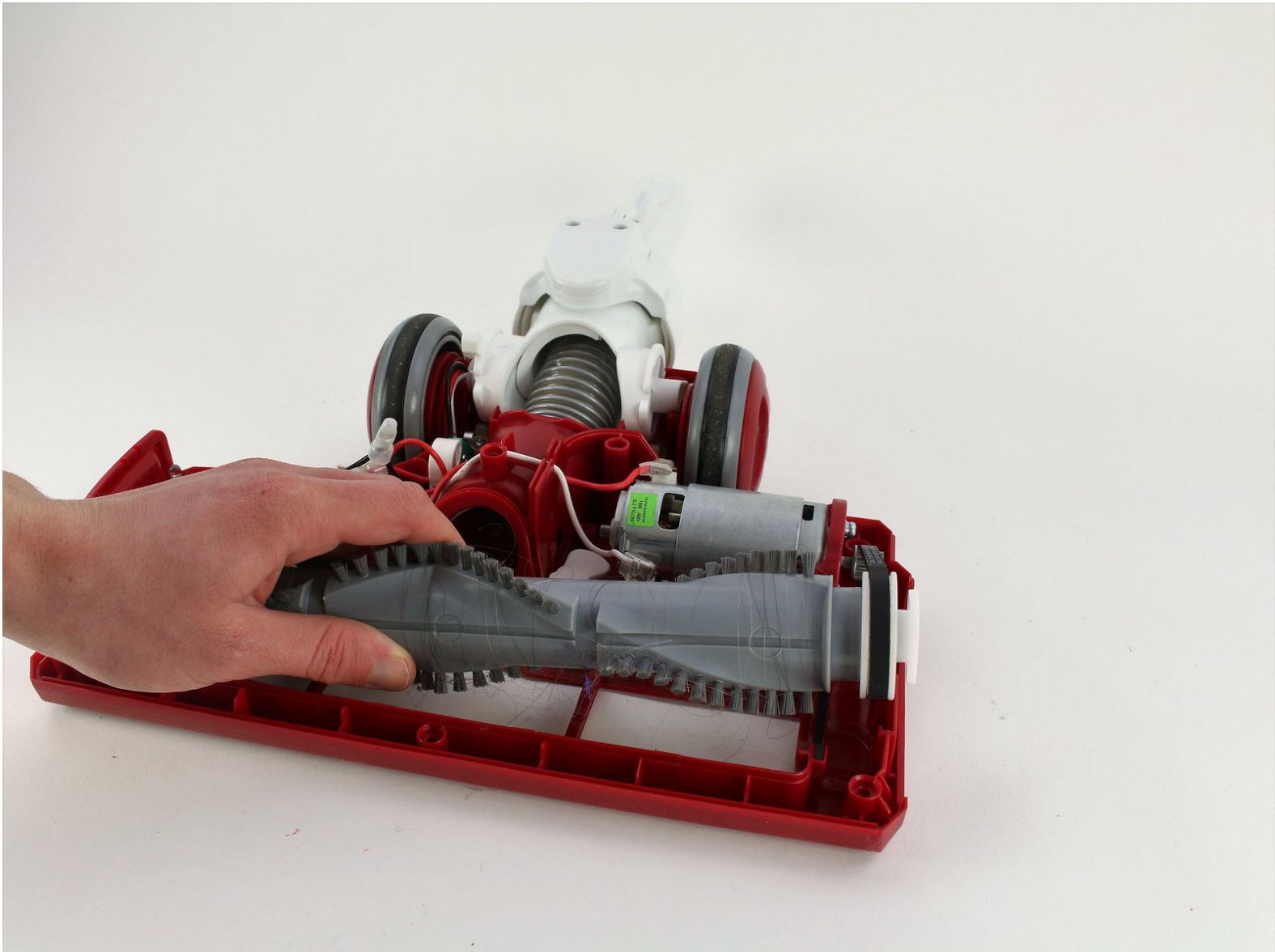




# Shark Rotator Slim-Light Lift-Away Upright Roller Brush Belt Replacement

How to replace the roller brush belt on the Shark Rotator Slim-Light Lift-Away Upright.

Written By: Daniel Ceja



---

## INTRODUCTION

When the roller brush is not spinning because of a broken belt or damaged teeth, you might want to consider replacing the belt.



### TOOLS:

- [Coin](#) (1)
  - [iFixit Opening Tools](#) (1)
  - [Phillips #2 Screwdriver](#) (1)
-

## Step 1 — Roller Brush



- Push the red Lift Away button down and lift up on the vacuum handle to detach the base.

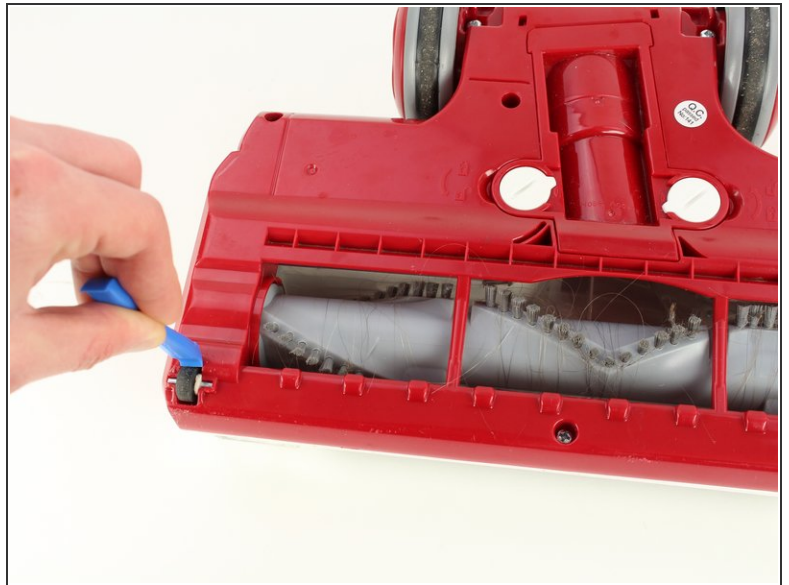
**i** The handle was removed for convenience but is not required.

## Step 2



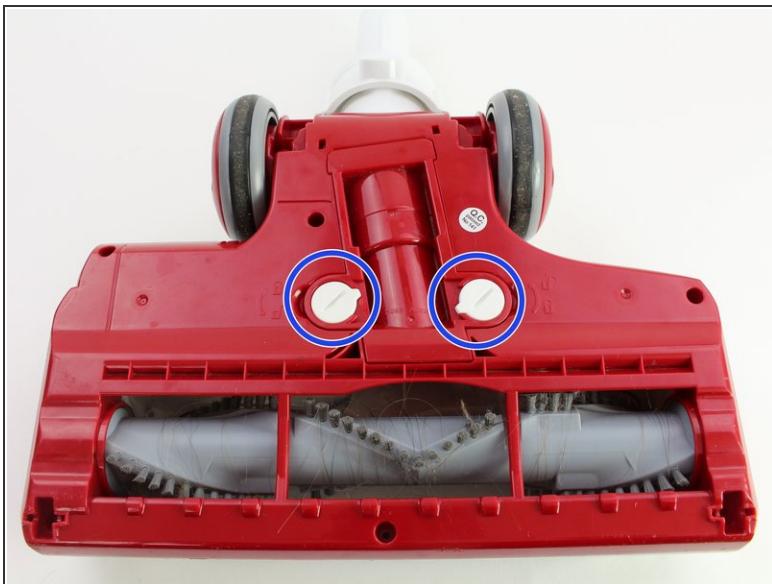
- Turn over the vacuum to reveal the roller brush.

### Step 3



- Pry the small wheels at the bottom of the base using the plastic opening tool.

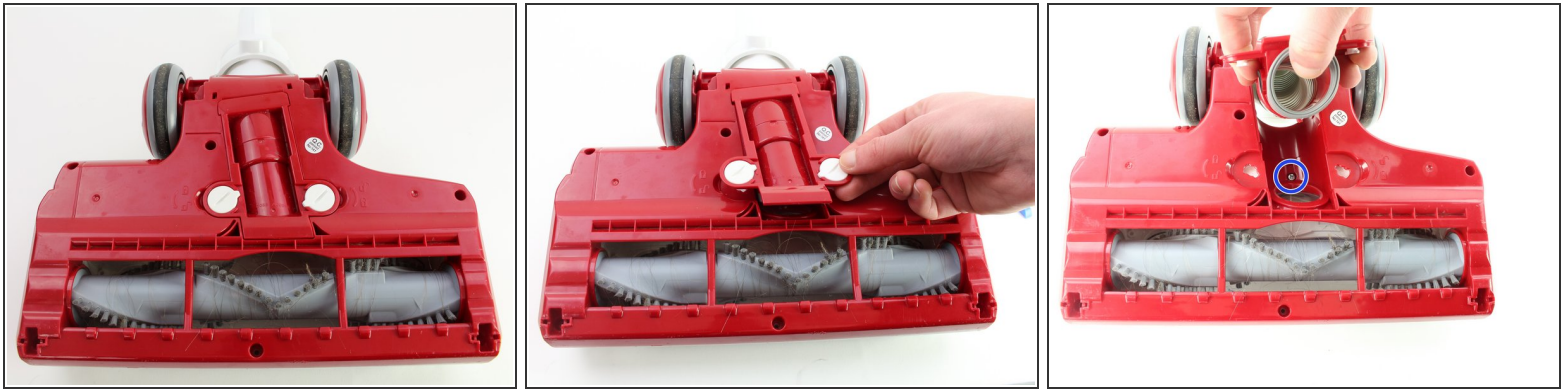
### Step 4



- Using a coin, turn the big white knobs located above the roller brush counter-clockwise.



## Step 5



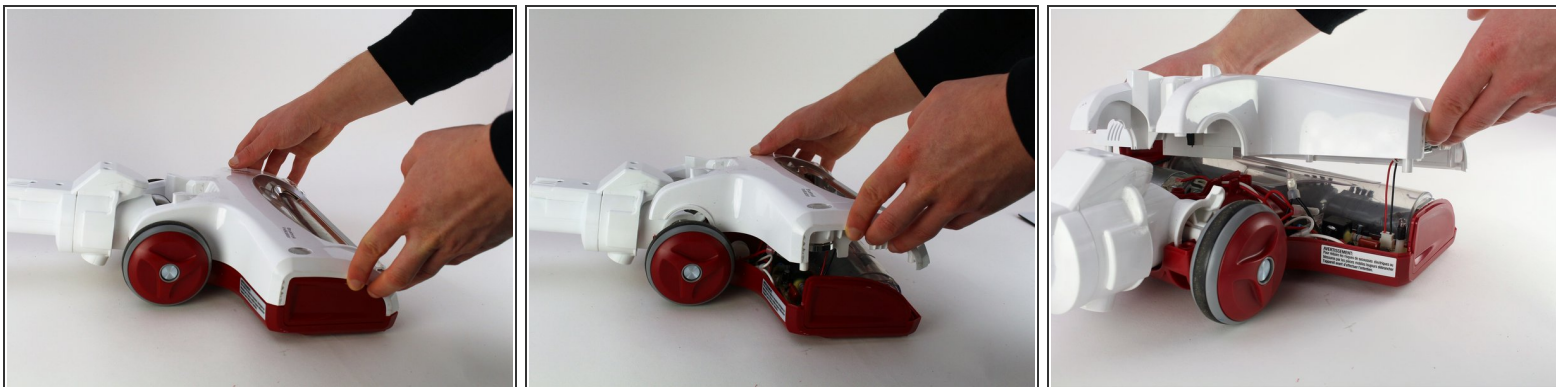
- Lift up the suction hose to reveal a screw.
- Remove the 12.7 mm Phillips #02 screw.

## Step 6



- Remove eight 12.7mm screws located under the vacuum using a Phillips #02 screwdriver.
- Remove two 12.7 mm screws located next to the wheels with a Phillips #02 screwdriver.
- ⓘ The two screws located next to the wheels are smaller in diameter.

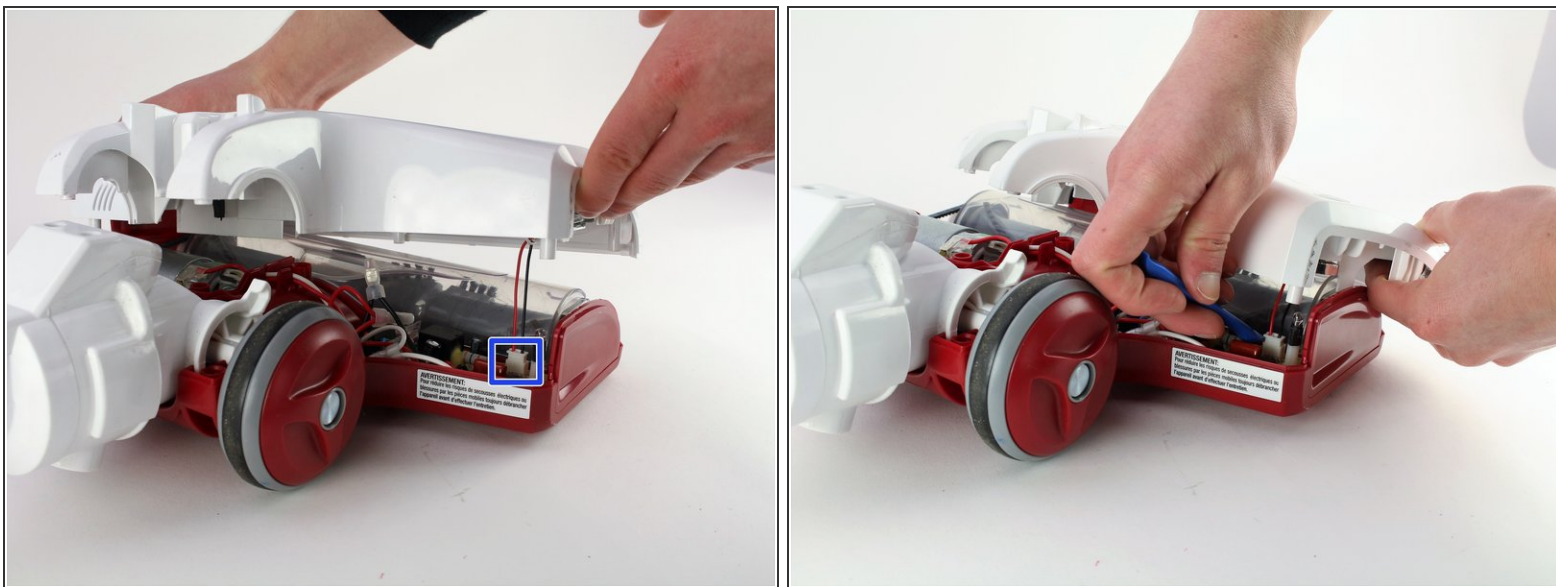
## Step 7



- Turn the vacuum upright and pull the white upper section of the brush roller circuit housing.

⚠ Be careful when lifting the housing as there is a connector attached.

## Step 8



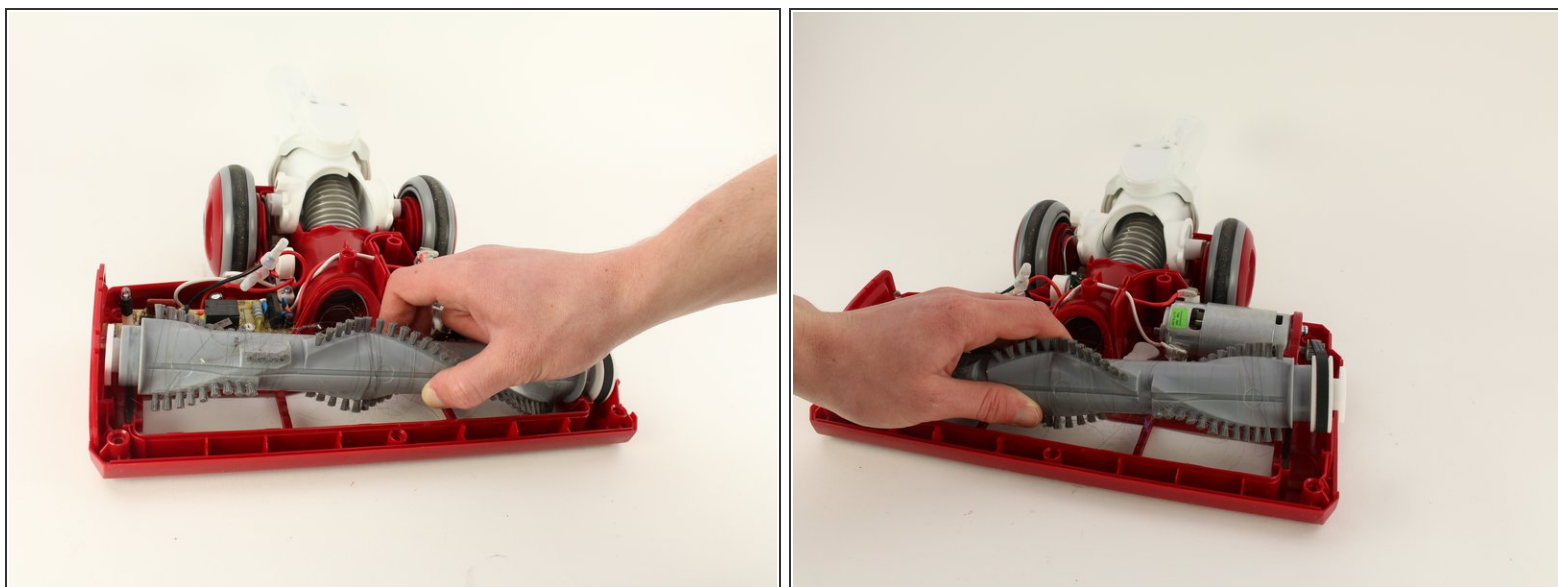
- Remove the connector attached to the circuit boards using a plastic opening tool.

## Step 9



- Remove the two 12.7 mm screws located at the top of the clear plastic brush roller housing using a Phillips #02 screwdriver.
- Lift the clear plastic brush roller housing.

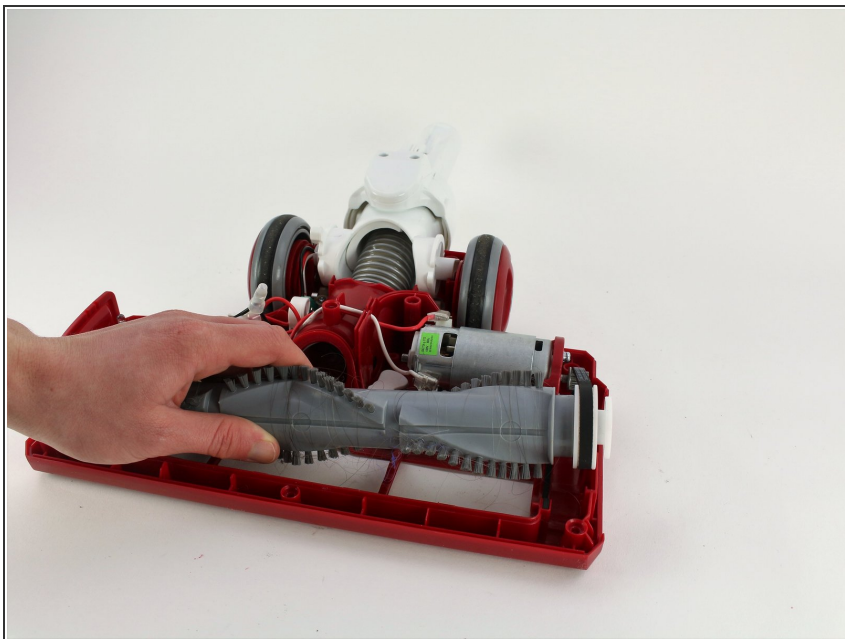
## Step 10



- Wiggle the brush roller upwards from the left and right side slots.

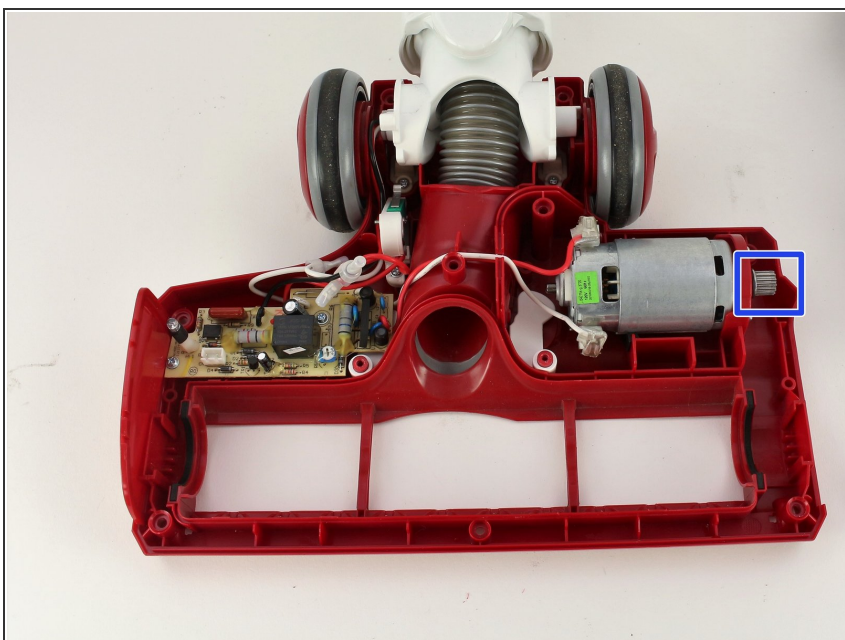


## Step 11 — Roller Brush Belt



- Remove the roller brush by sliding it out toward the left, off the belt.

## Step 12



- Remove the belt from the motor gear by sliding the belt away from the gear and belt motor.
- ⓘ In the following picture the belt was already removed.

To reassemble your device, follow these instructions in reverse order.