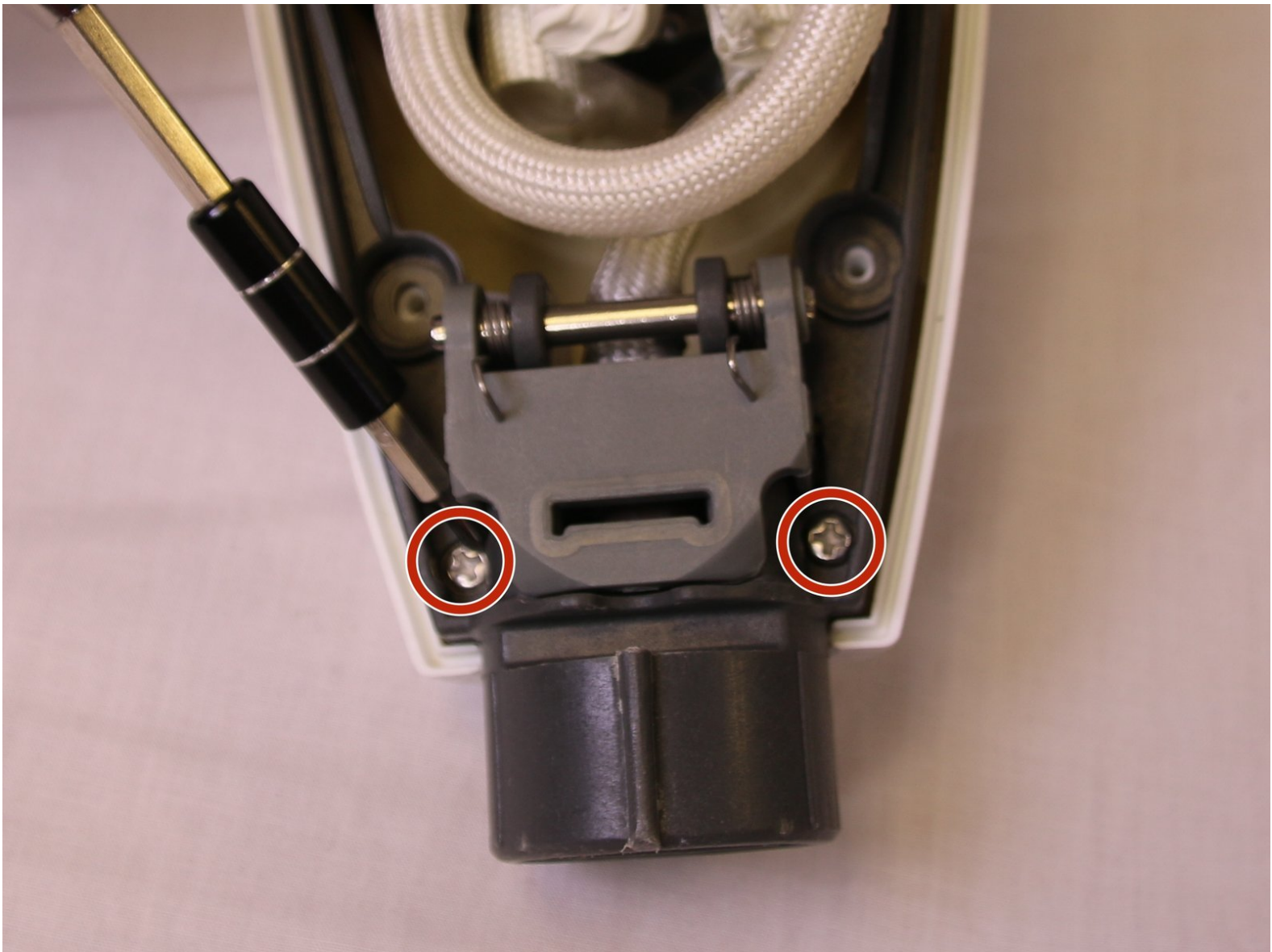




# Shark Steam Pocket Mop Ejection Button Assembly Replacement

This guide will inform users how to remove and replace their Shark Steam Pocket Mop's ejection button assembly.

Written By: Jacob Howe



---

## INTRODUCTION

This guide will inform users how to remove and replace their Shark Steam Pocket Mop's ejection button assembly.



### TOOLS:

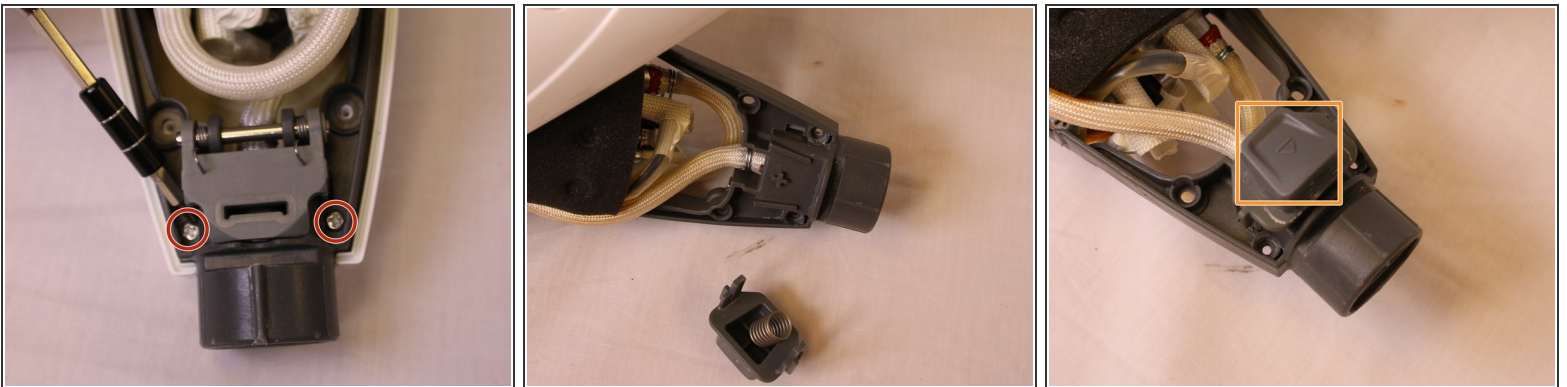
- [Phillips #0 Screwdriver](#) (1)
-

## Step 1 — Back Panel



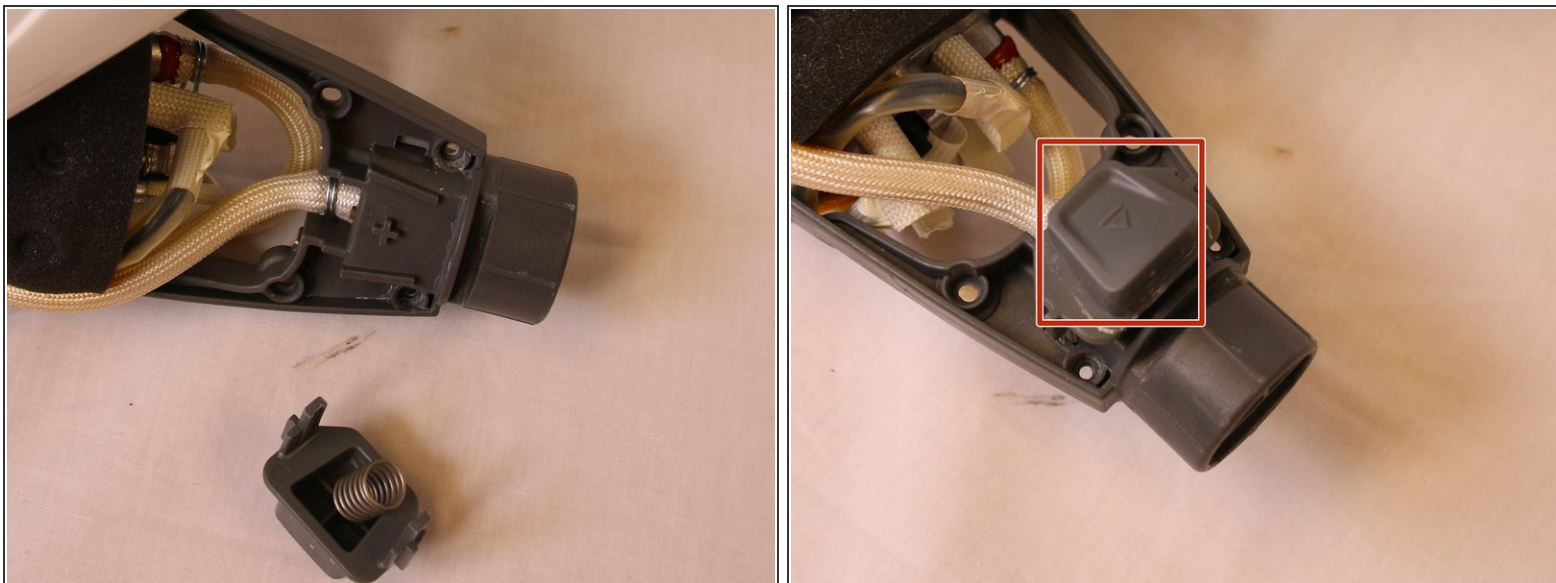
- Begin by removing the 8 quarter inch phillips head screws found along the back panel
- Once all 8 screws have been removed, gently remove the back panel from the rest of the mop's body

## Step 2 — Ejection Button Assembly



- Begin by removing the two quarter inch Phillips head screws you see pictured. These screws hold the bottom part of the button assembly to the Mop's midframe.
- ⚠ **Be very careful** not to lose the spring that is in between the top and bottom part of the button assembly.

### Step 3



- Once the bottom piece of the assembly has been removed, carefully turn the mop over and move the front panel of the mop to the side
- Once you've turned your device over you should be able to remove the top portion of the button assembly with ease. It should not require anything more than your fingers.

To reassemble your device, follow these instructions in reverse order.