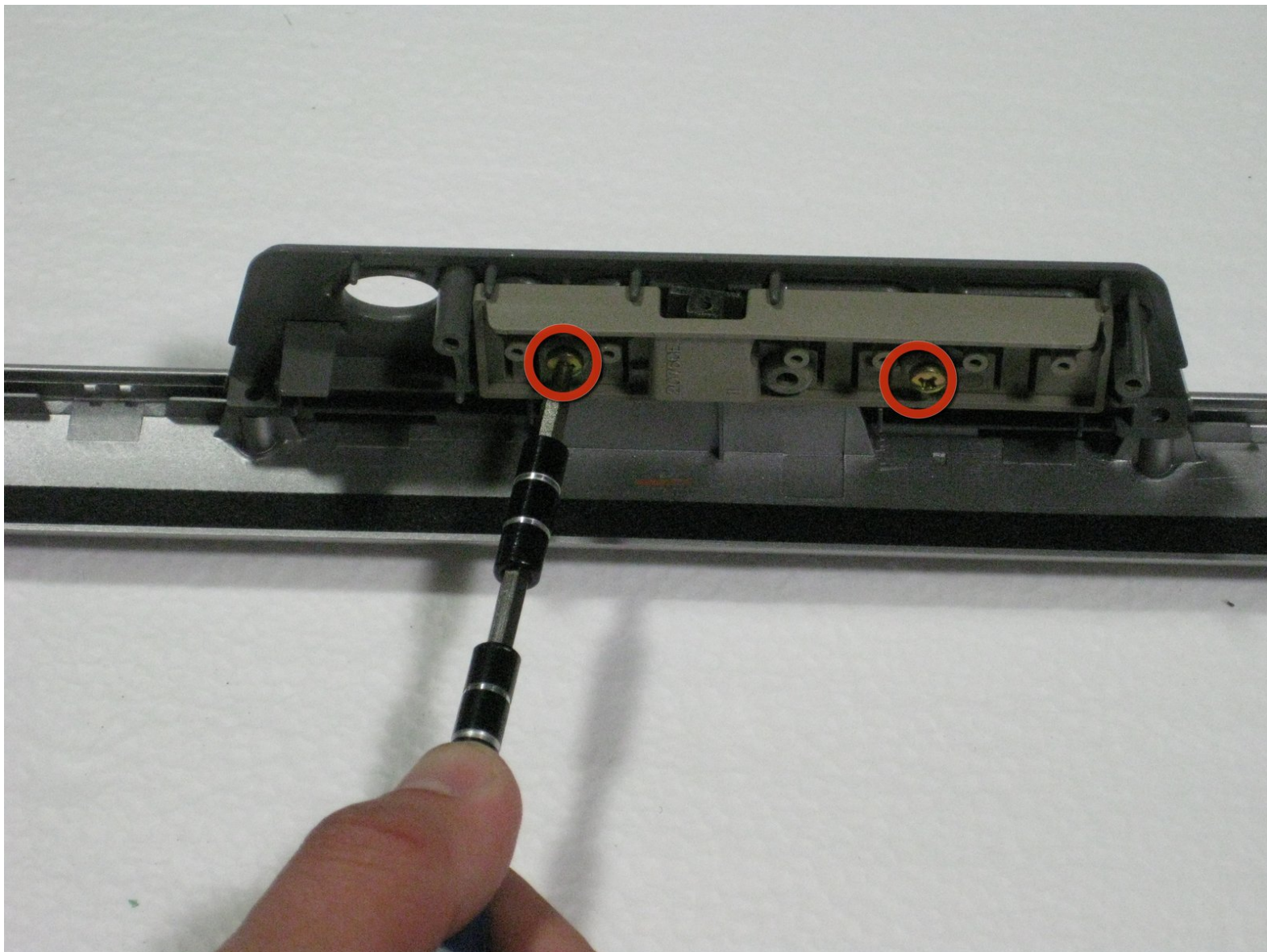




Sharp Aquos LC13B2UA Buttons Replacement

Written By: Robert Hobson





TOOLS:

- [Phillips #2 Screwdriver](#) (1)
-

Step 1 — Stand



- Place the TV face down on a flat smooth surface as to not scratch the screen.
- Using a Phillips #2 screwdriver remove the four 8mm screws attaching the stand to the TV.

Step 2



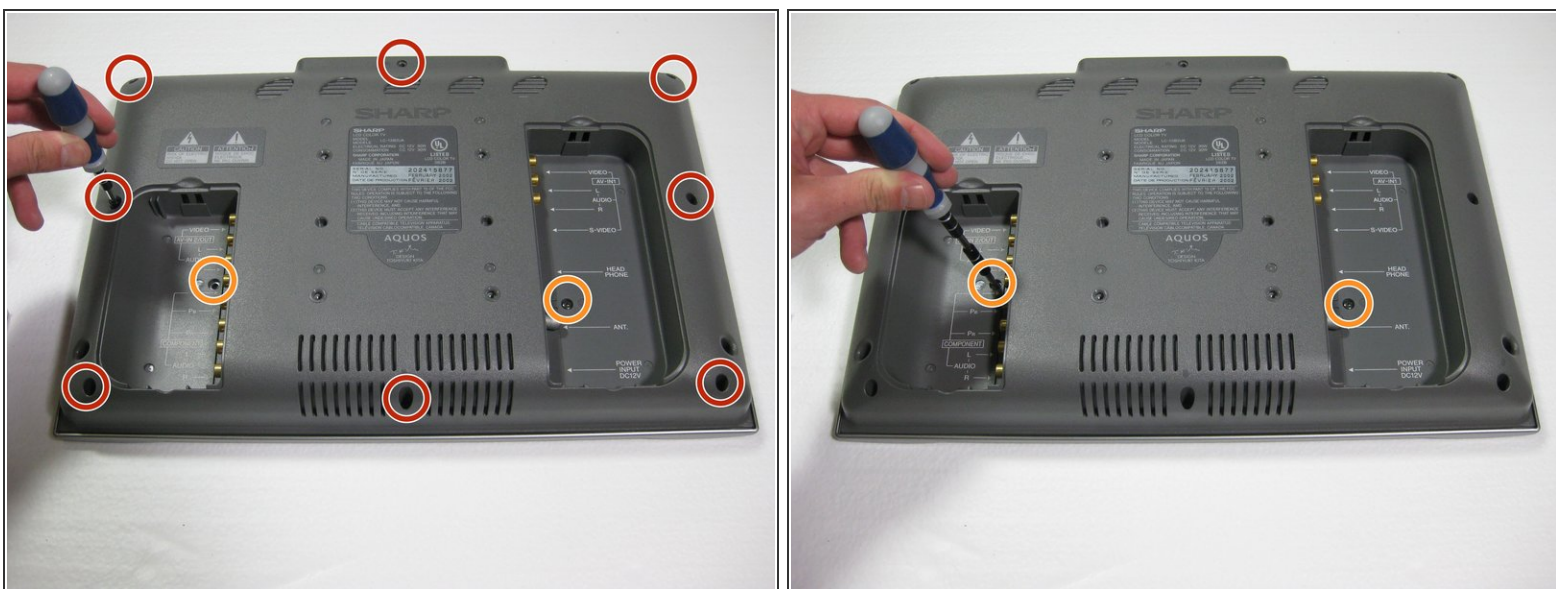
- Lift the stand off the television.

Step 3 — Back Case



- Remove the two back panels by prying them out with your hands.

Step 4



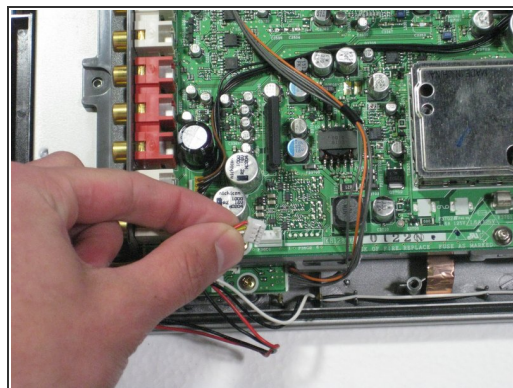
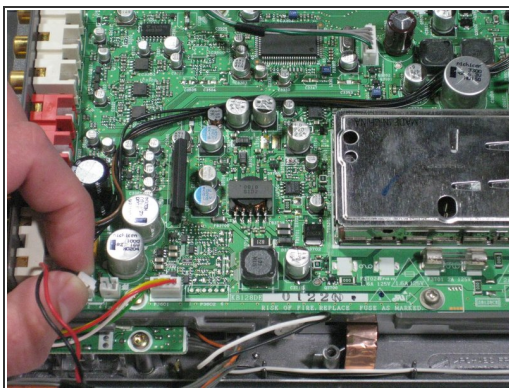
- Using a Phillips #2 screwdriver, remove the eight 6mm Phillips screws located around the edge.
- Using a Phillips #2 screwdriver, remove the two 6mm Phillips screws located near the inputs.

Step 5



- Using your hands, gently lift and remove the back case of the television.

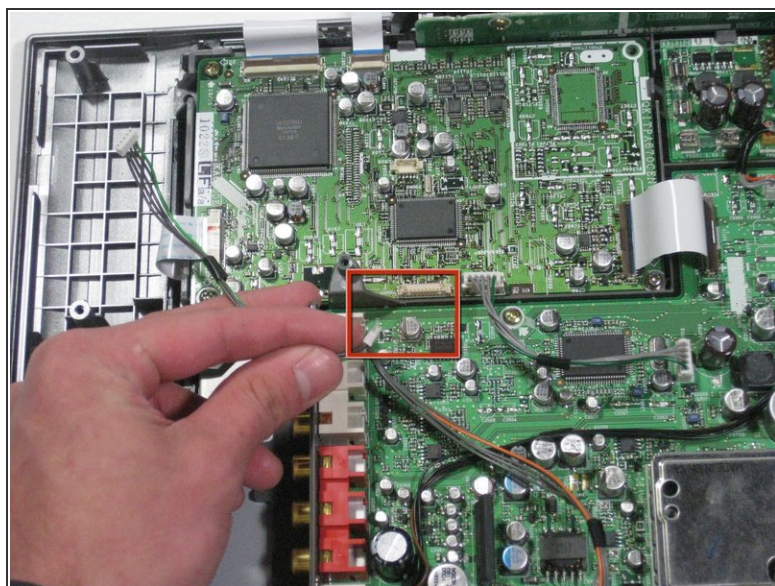
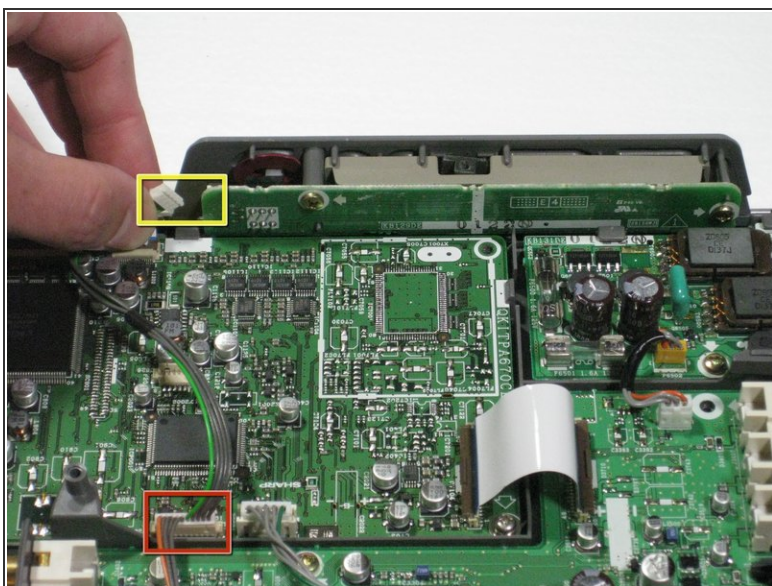
Step 6 — Motherboard



- Remove the two speaker cables and the connector from the circuit board by pinching the plastic connectors and firmly pulling up.

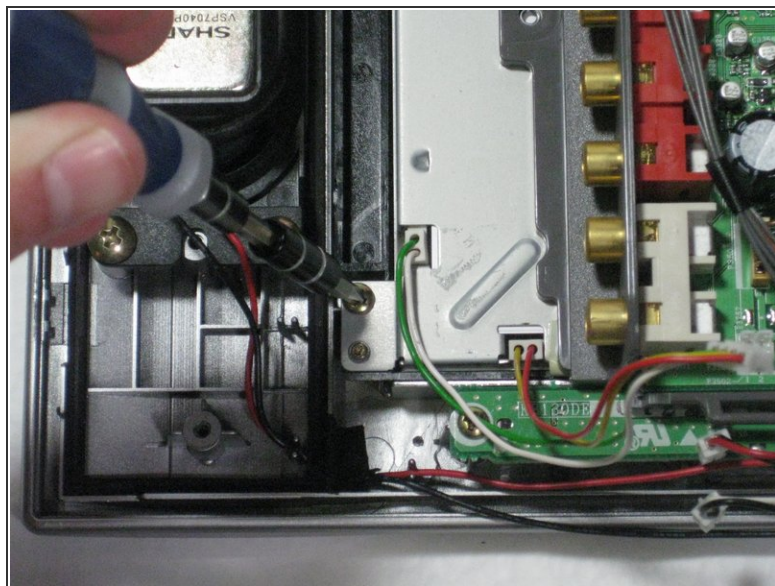
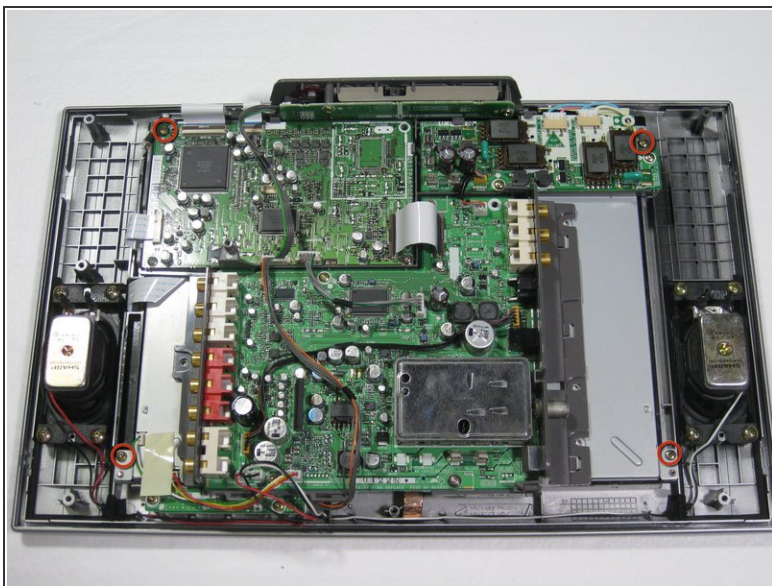
⚠ Pull on the plastic part of the connector, even though it may seem easiest to pull on the wires.

Step 7



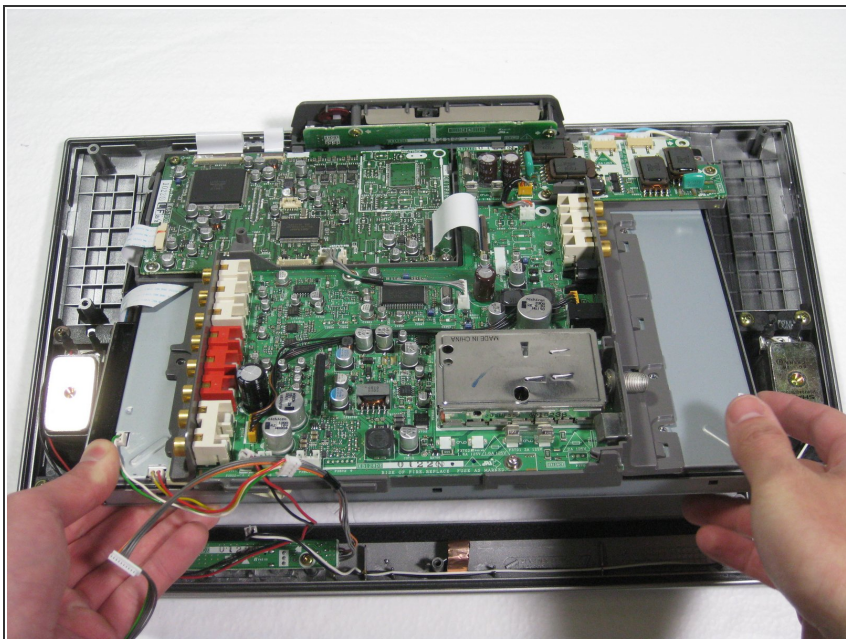
- Remove the green and gray power connector from the side of the buttons panel at the top of the television.
- Remove the green/gray to orange/gray connector from the center of the circuit board.

Step 8



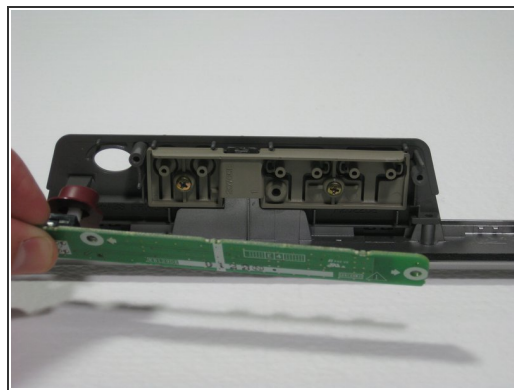
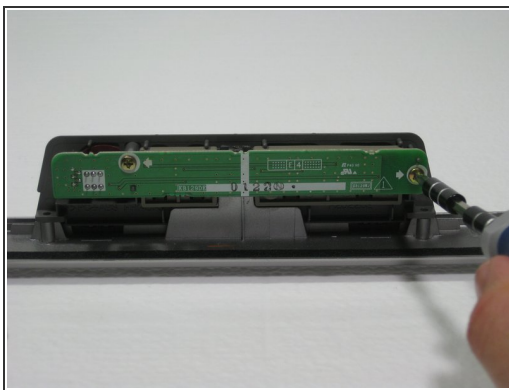
- Remove the four 5mm Phillips screws attaching the LCD and circuit board to the front case.

Step 9



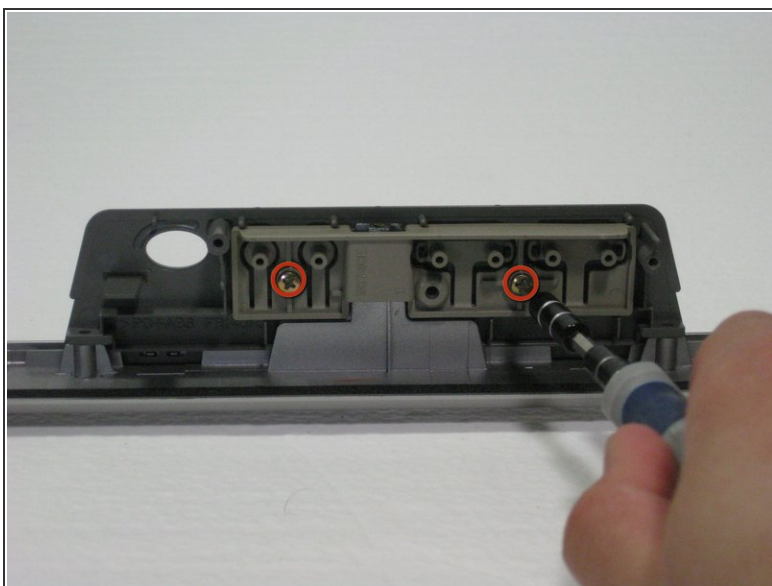
- Lift the circuit board/LCD block from the case by lifting the near side of the circuit board and sliding it under the button frame.

Step 10 — Power Button



- Remove the two 6mm Phillips screws.
- Pull the board toward you, giving you access to the power button.

Step 11 — Top Buttons



- Unscrew the two 4mm Phillips screws.
- Lift the buttons off the front case.

To reassemble your device, follow these instructions in reverse order.