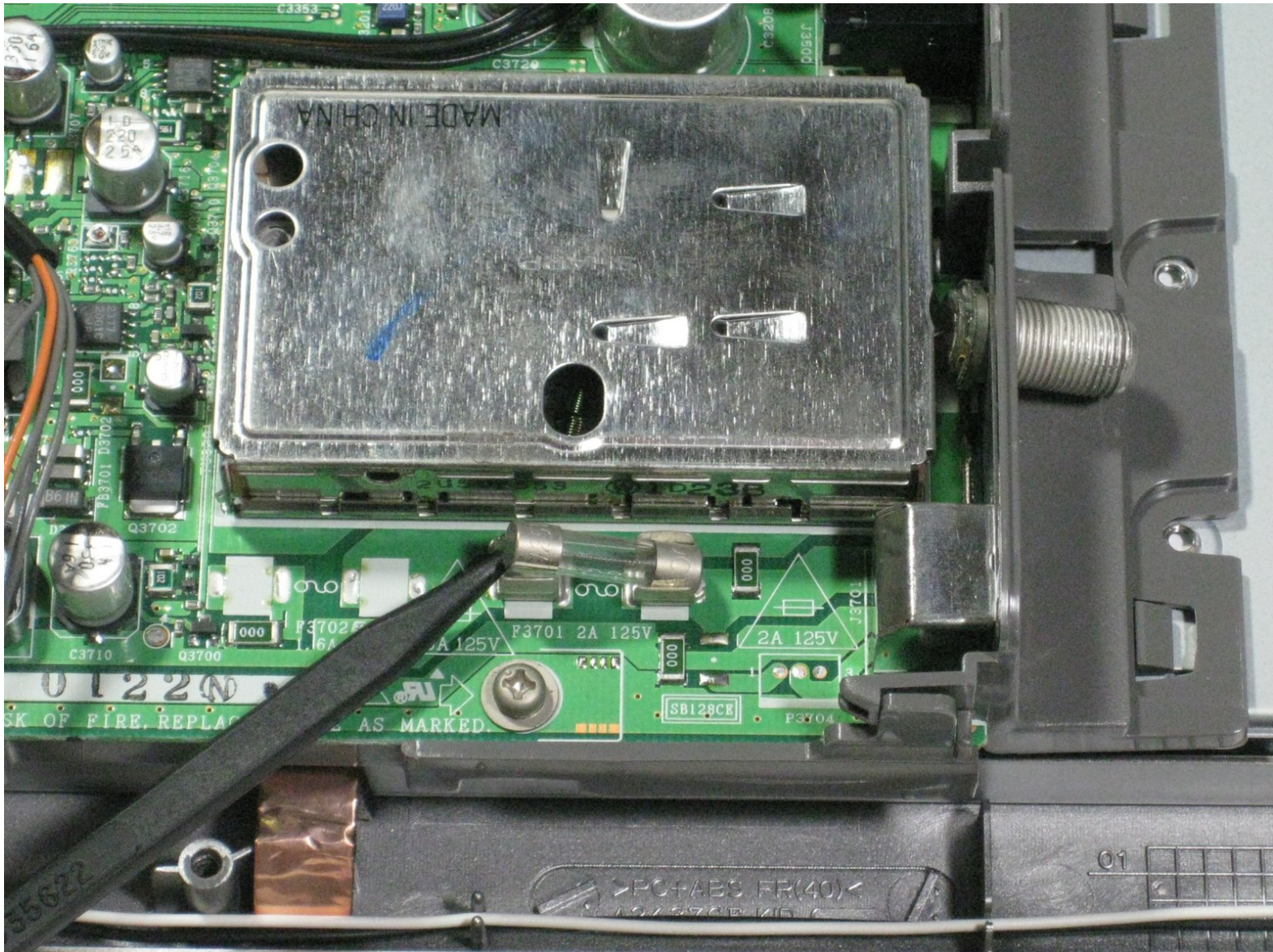




Sharp Aquos LC13B2UA Fuses Replacement

Written By: Robert Hobson





TOOLS:

- [Phillips #2 Screwdriver](#) (1)
 - [Spudger](#) (1)
-

Step 1 — Stand



- Place the TV face down on a flat smooth surface as to not scratch the screen.
- Using a Phillips #2 screwdriver remove the four 8mm screws attaching the stand to the TV.

Step 2



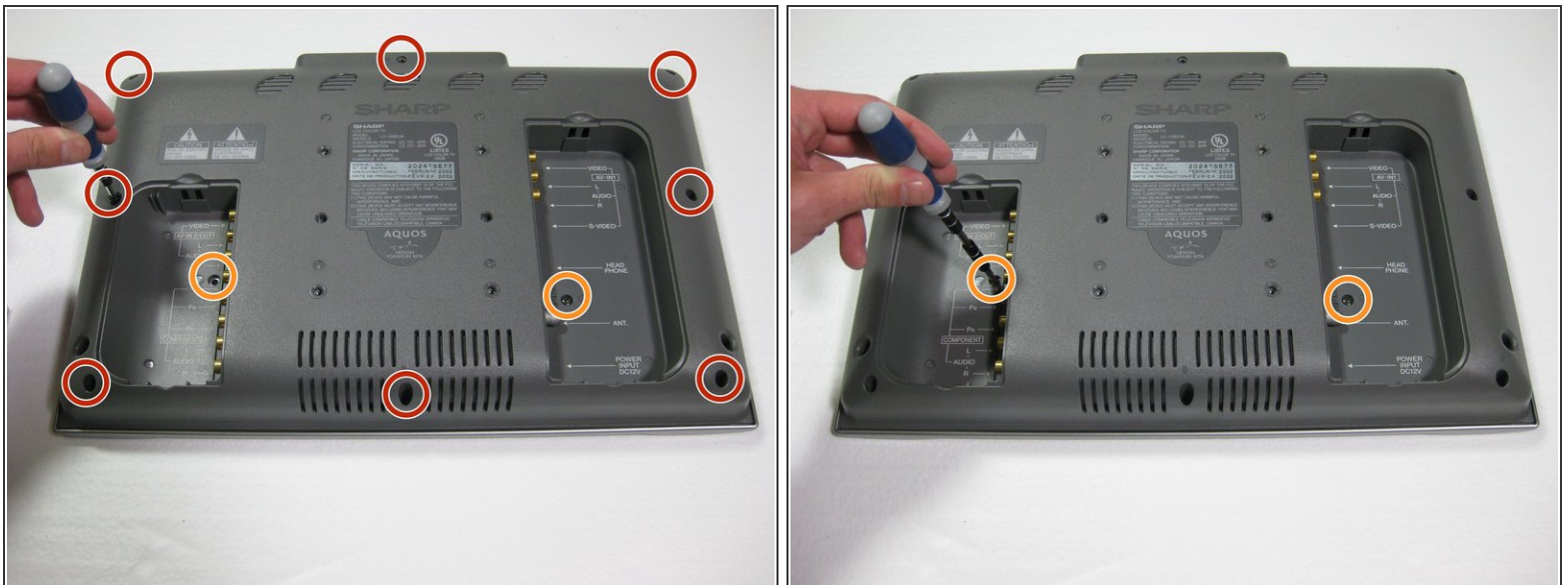
- Lift the stand off the television.

Step 3 — Back Case



- Remove the two back panels by prying them out with your hands.

Step 4



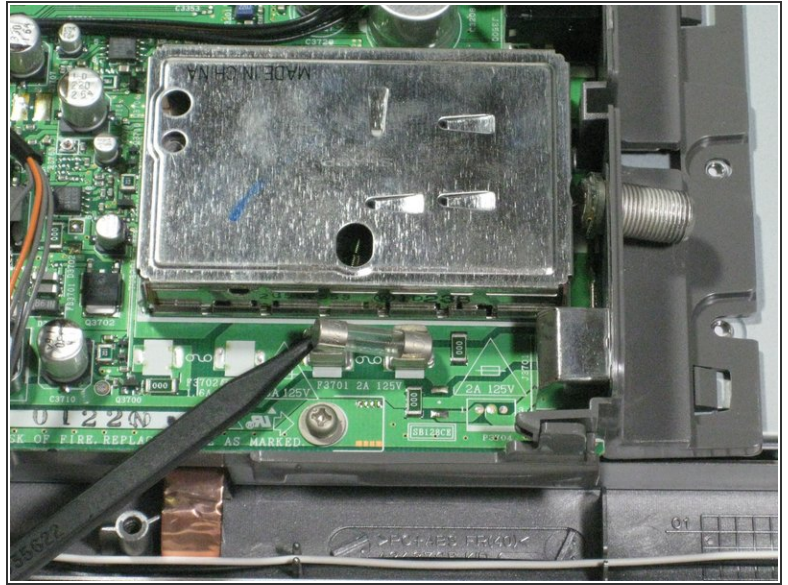
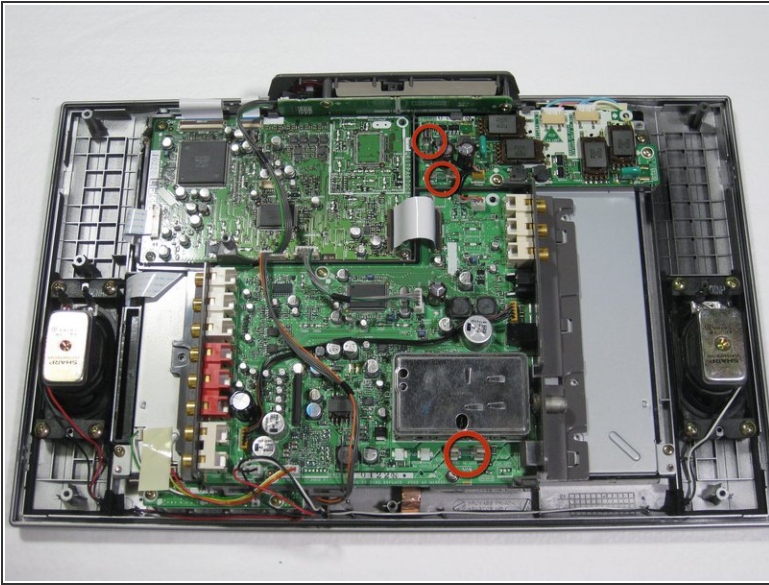
- Using a Phillips #2 screwdriver, remove the eight 6mm Phillips screws located around the edge.
- Using a Phillips #2 screwdriver, remove the two 6mm Phillips screws located near the inputs.

Step 5



- Using your hands, gently lift and remove the back case of the television.

Step 6 — Fuses



- To identify a broken fuse, look at the thin wire running through the center of the fuse. If the wire is misshapen or broken, the fuse needs to be replaced.
 - To remove the fuse, either push from one side or pry gently with a spudger.
- ⚠ Make sure to replace the fuse with the correct amperage and voltage fuse. The correct voltage and amperage is displayed on the side of the fuse.

To reassemble your device, follow these instructions in reverse order.