



Sharp Aquos LC13B2UA Motherboard Replacement

Written By: Robert Hobson





TOOLS:

- [Phillips #2 Screwdriver](#) (1)
-

Step 1 — Stand



- Place the TV face down on a flat smooth surface as to not scratch the screen.
- Using a Phillips #2 screwdriver remove the four 8mm screws attaching the stand to the TV.

Step 2



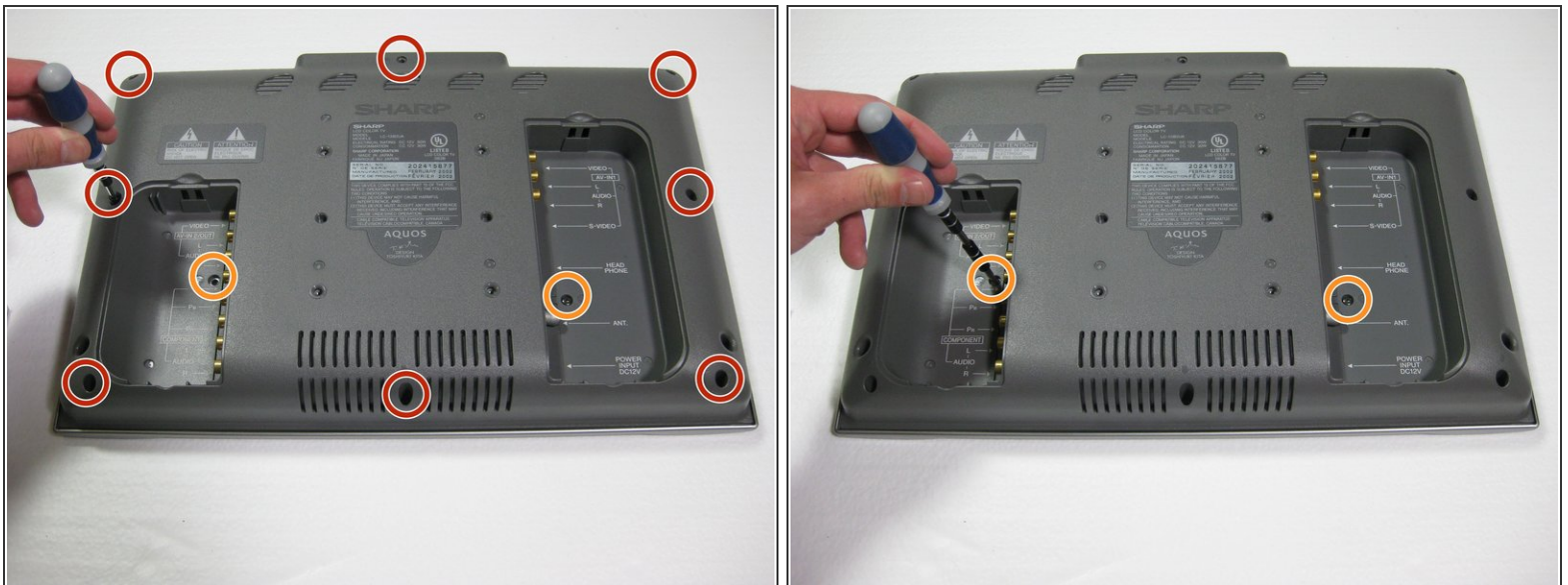
- Lift the stand off the television.

Step 3 — Back Case



- Remove the two back panels by prying them out with your hands.

Step 4



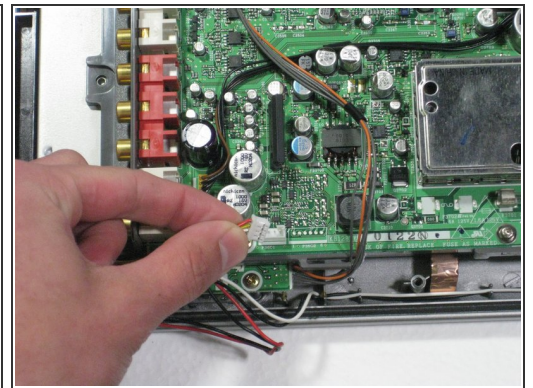
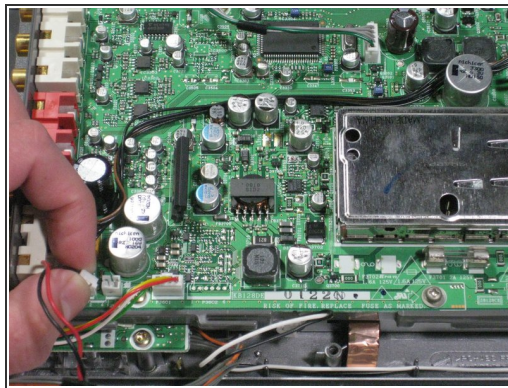
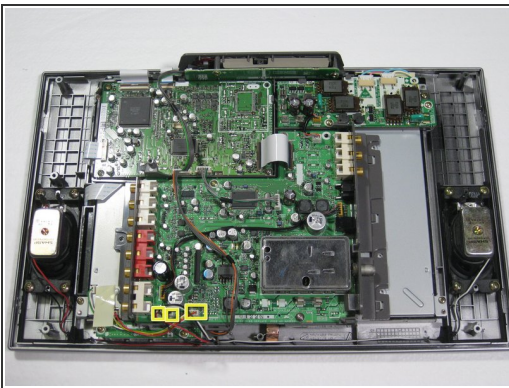
- Using a Phillips #2 screwdriver, remove the eight 6mm Phillips screws located around the edge.
- Using a Phillips #2 screwdriver, remove the two 6mm Phillips screws located near the inputs.

Step 5



- Using your hands, gently lift and remove the back case of the television.

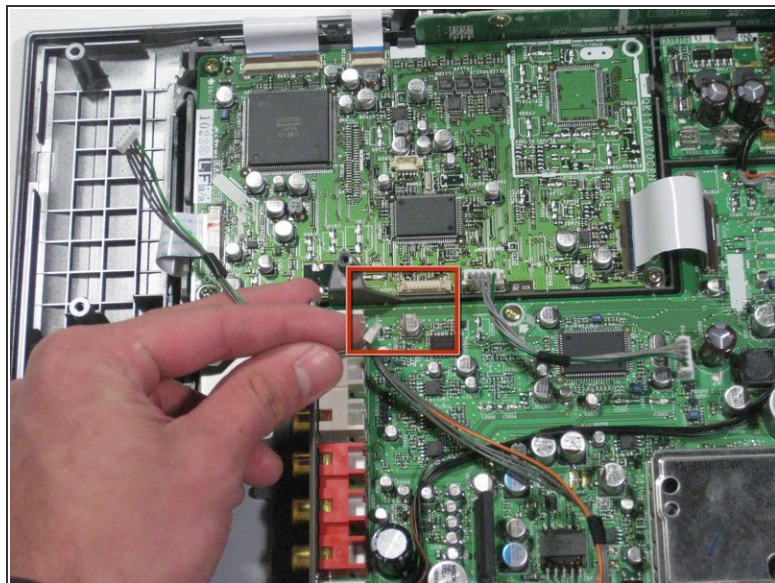
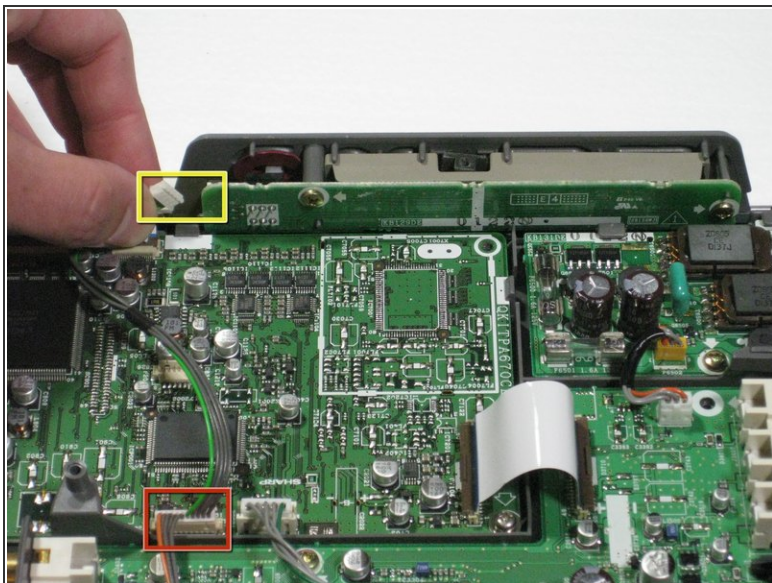
Step 6 — Motherboard



- Remove the two speaker cables and the connector from the circuit board by pinching the plastic connectors and firmly pulling up.

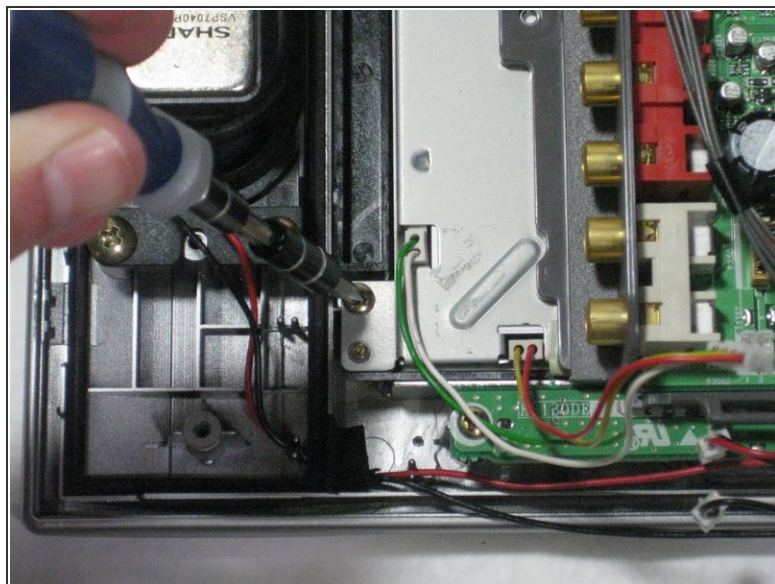
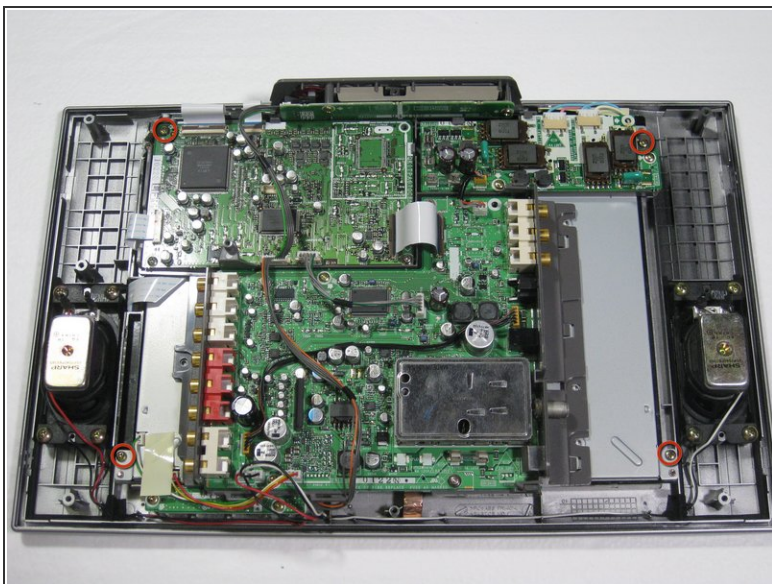
⚠ Pull on the plastic part of the connector, even though it may seem easiest to pull on the wires.

Step 7



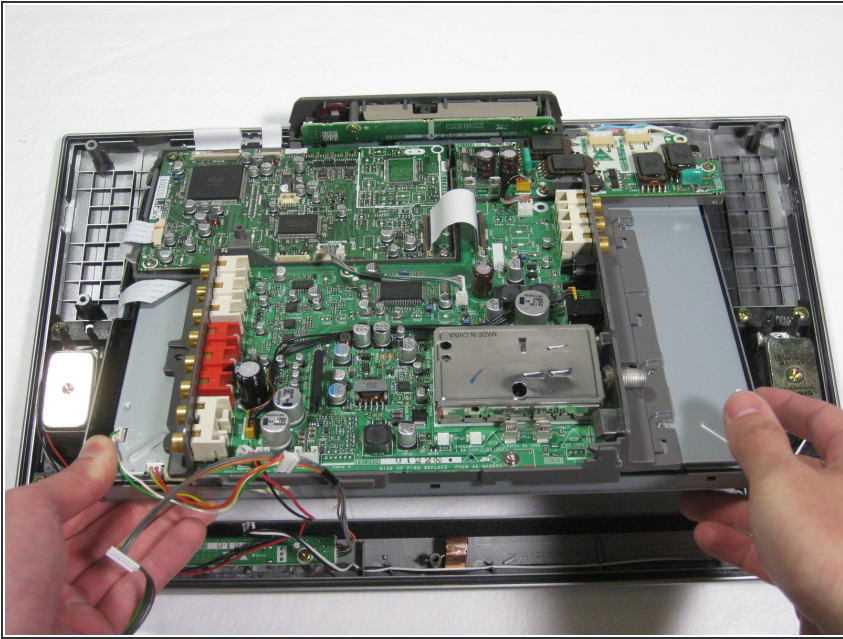
- Remove the green and gray power connector from the side of the buttons panel at the top of the television.
- Remove the green/gray to orange/gray connector from the center of the circuit board.

Step 8



- Remove the four 5mm Phillips screws attaching the LCD and circuit board to the front case.

Step 9



- Lift the circuit board/LCD block from the case by lifting the near side of the circuit board and sliding it under the button frame.

To reassemble your device, follow these instructions in reverse order.