



# Sharp Microwave Door Switch Replacement

Sharp Microwave Door Switch Replacement

Written By: Sanjay Don



---

## INTRODUCTION

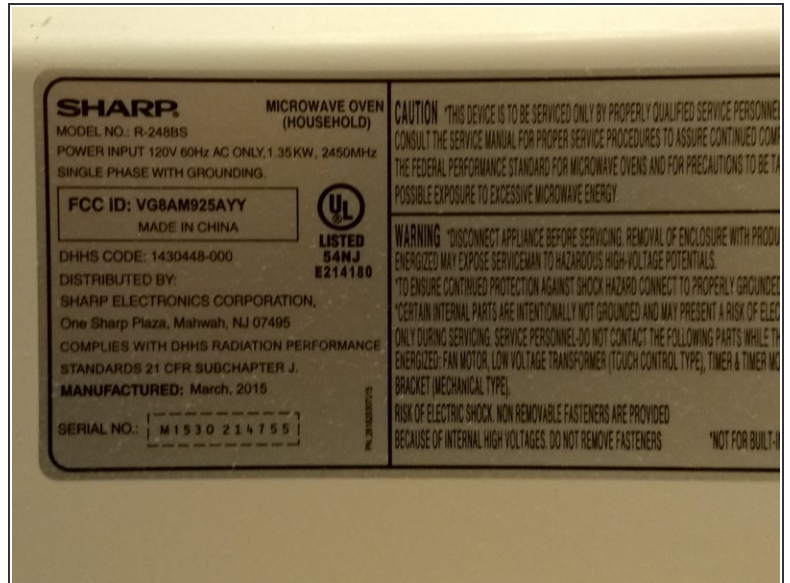
This guide will show you how to replace the door switch for the Sharp Microwave so that it will not turn on when the door is opened.

---

### TOOLS:

- [T15 Torx Screwdriver](#) (1)
  - [Phillips #1 Screwdriver](#) (1)
  - [Phillips #2 Screwdriver](#) (1)
-

## Step 1 — Door Switch

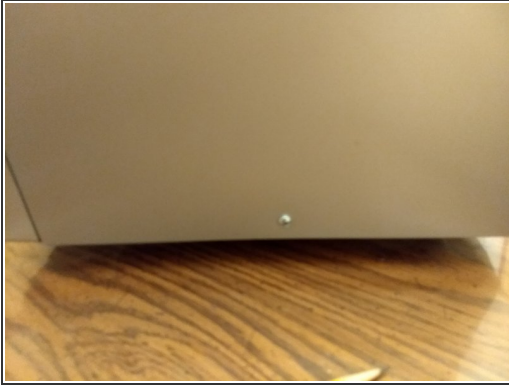


- Sharp microwave running with door open
- Problem with the hardware interlock switches triggered by the door latch
- Sharp model R-248BS

 Unplug the microwave before you begin disassembly.

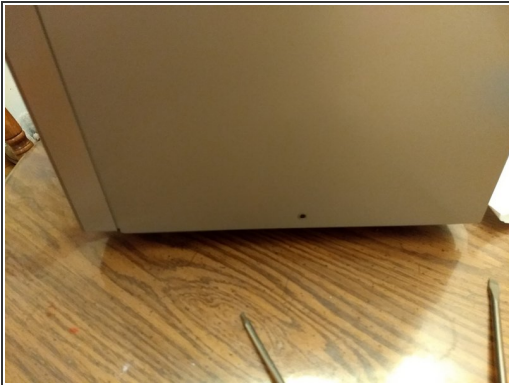


## Step 2 — Remove screws



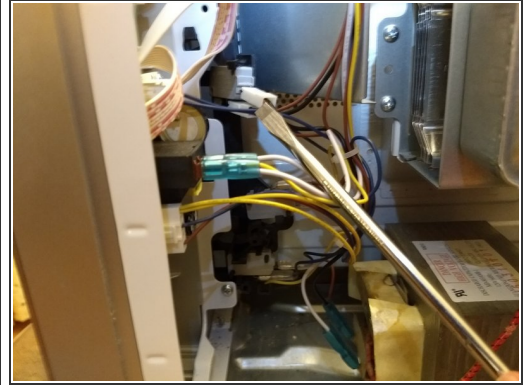
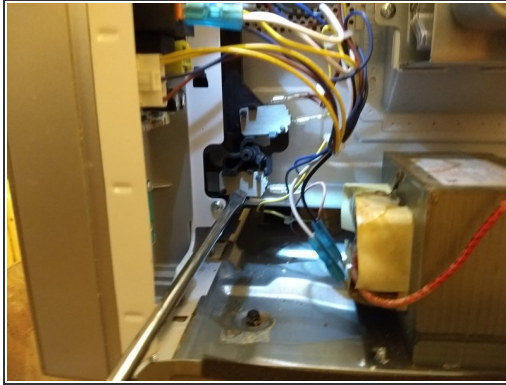
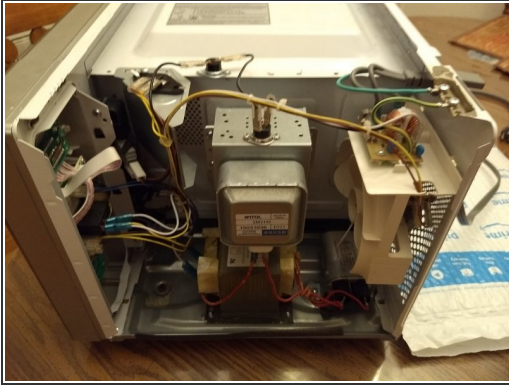
- Side screw
- ...and 4 screws in the back
- Star screws need T15X4 or equivalent. A flathead can be used in a pinch.
- Remove the screws

## Step 3 — Remove the screws (5 in number))



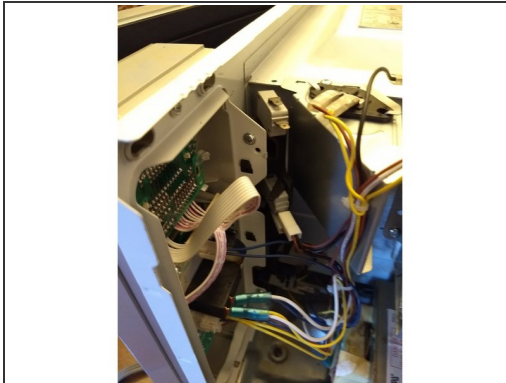
- Remove the case, should slide out with a little bit of effort.due to notches in the frame on the front top left ( when looking from the back).

## Step 4 — Microwave with the cover open



- Now we will identify the switches
- The lower two switches
- ... and the upper switch
- Upper switch faulty

## Step 5 — Replacement of the switch



- Top switch appears loose
- Replace and reinstall
- Angled reinsertion to line up hole with plastic support

To reassemble your device, follow these instructions in reverse order.