



# Sharper Image SBT5002 Speaker Replacement

This guide shows how to replace the speaker in the woofer.

Written By: Linda Freund



## INTRODUCTION

Speakers rely on precisely placed components to convert electronic signals into sound waves. Touching the speaker by pushing or pulling can cause the speaker components to deform. As a result, the speaker will no longer produce an accurate sound. Replacing the speaker is the best repair for speaker damage.


---

### TOOLS:

- [Pin Punch](#) (1)
  - [Phillips #0 Screwdriver](#) (1)
  - [Spudger](#) (1)
  - [Hammer](#) (1)
  - [Phillips #2 Screwdriver](#) (1)
-

## Step 1 — Back Panel



 Unplug the speaker before doing any work on it.

- Use a #0 Phillips screwdriver to remove the eight 13mm Phillips head screws from the back panel.

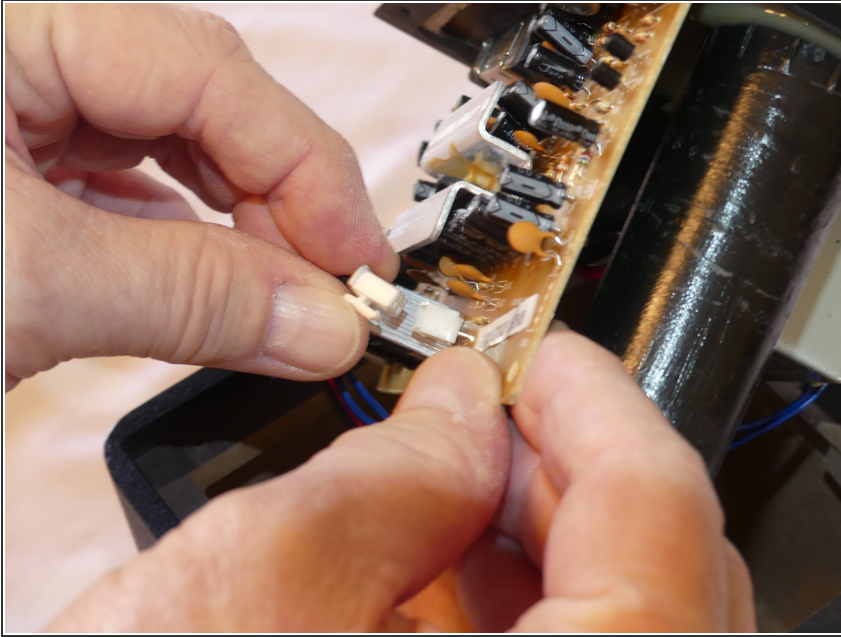
## Step 2



- Remove the back panel.

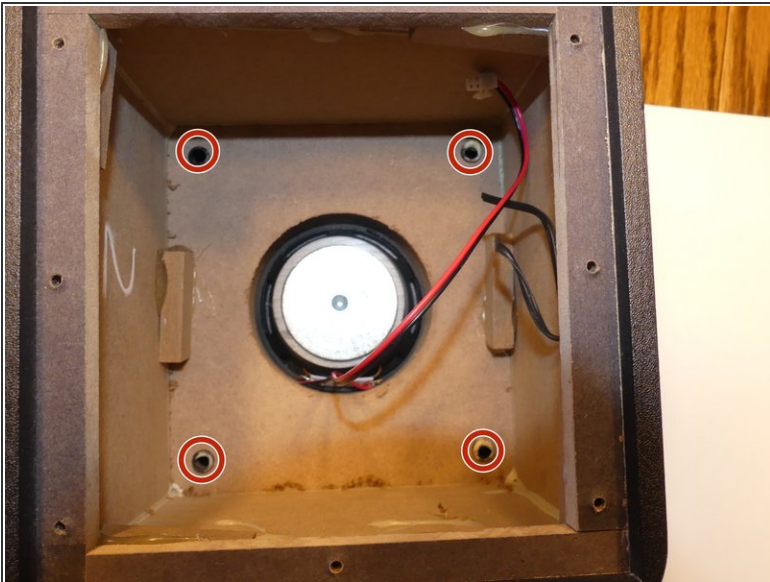


### Step 3 — Speaker



- Remove the snap cable that connects the speaker to the circuit board.

### Step 4



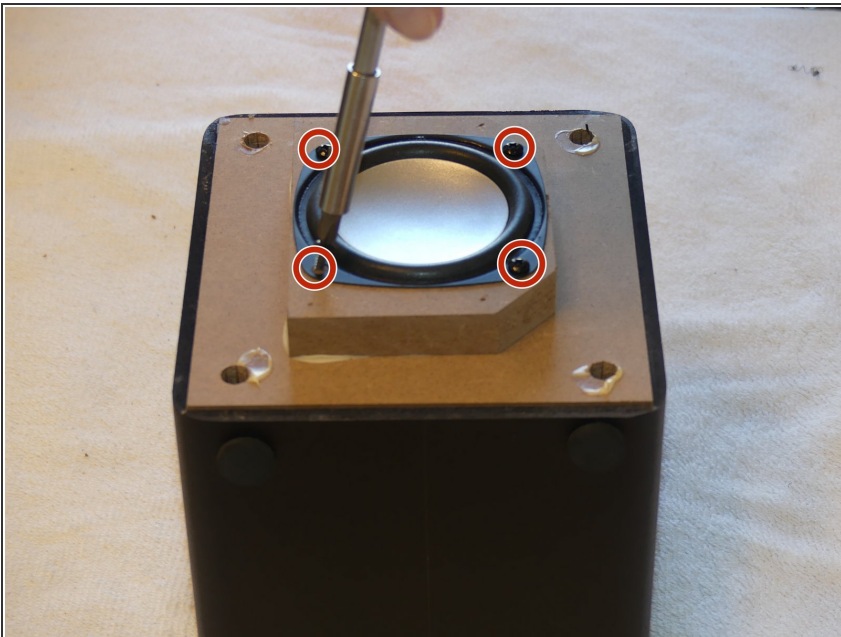
- Use a tap hammer and a punch to release the 4 posts that hold the front panel in place.

## Step 5



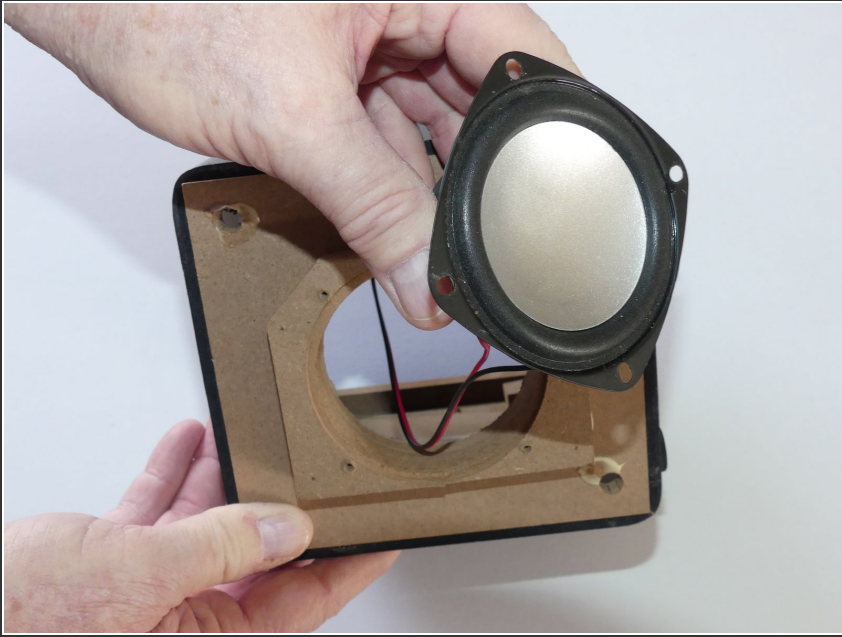
- Use a plastic opening tool or spudger to pry off the front panel.

## Step 6



- Use a #4 Phillips screwdriver to remove the four 9.5mm screws that secure the subwoofer to the woofer box.

## Step 7



- Remove the defective speaker.

To reassemble your device, follow these instructions in reverse order.