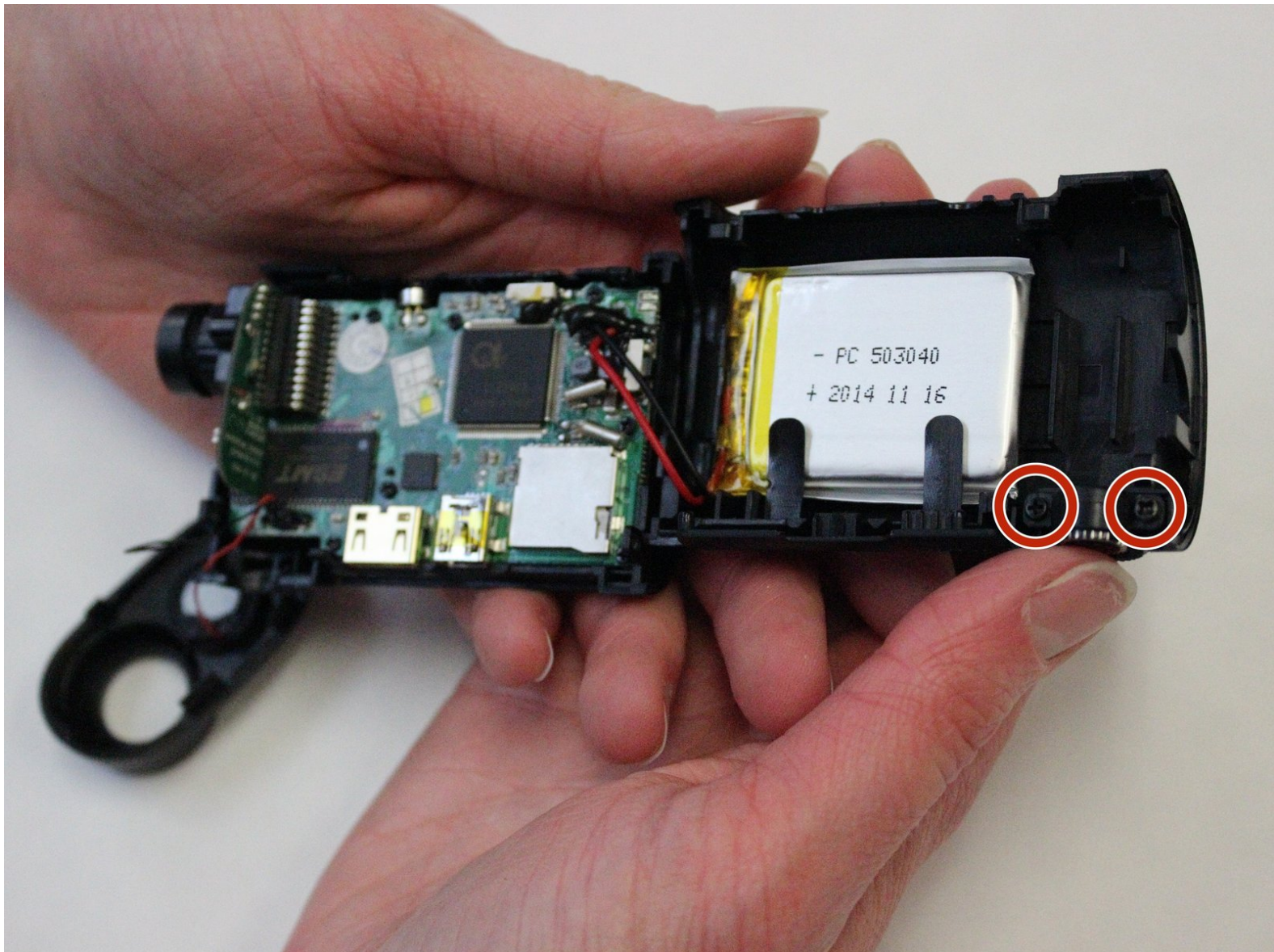




Sharper Image SVC430 Tripod Nut Replacement

In this guide, the user will learn how to replace the tripod nut on the bottom of the device.

Written By: Kathryn Mattingly



INTRODUCTION

The user will learn how to:

- Remove the device from the case
- Completely tear down the device
- Locate the tripod nut
- Remove the tripod nut



TOOLS:

- [64 Bit Driver Kit](#) (1)
 - [iFixit Opening Tools](#) (1)
-

Step 1 — Sharper Image SVC430 Disassembly



 Power off your device before you begin.

- Use your thumb to push down on the lever that says "open" while simultaneously pushing up the latch with your other thumb.

Step 2



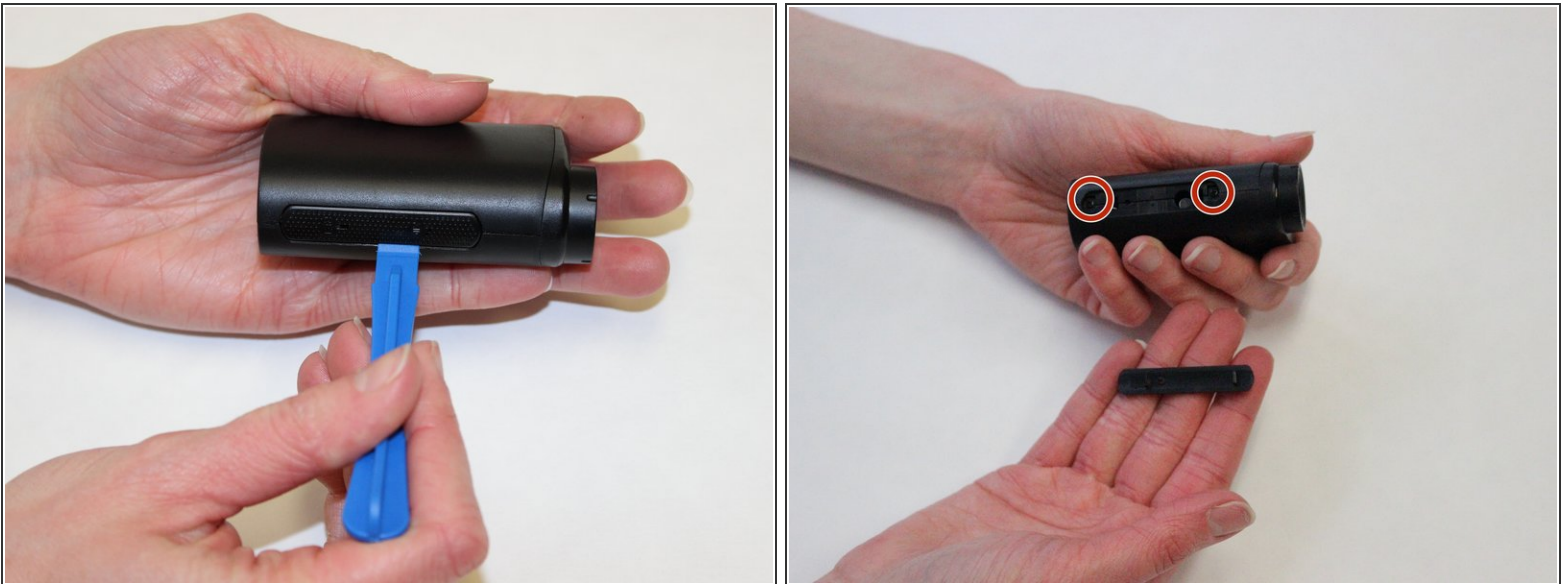
- Once the latch is free, simply pull the front of the waterproof case off and slide the camera out.

Step 3



- Locate the bottom of the device.
- Now, using the metal screwdriver, unscrew the screw on the bottom of the device.

Step 4



 This panel should come off easily, do not apply too much pressure.

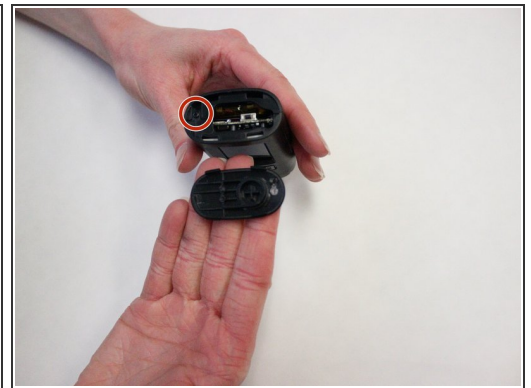
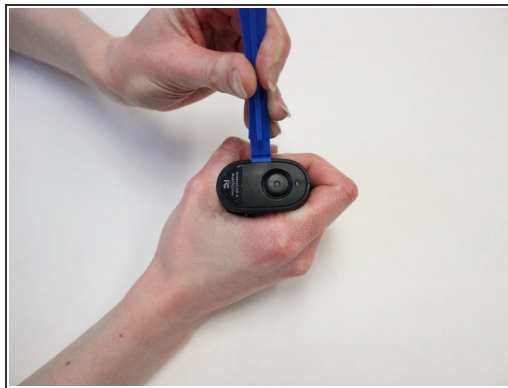
- Use the plastic opening tool to pry open the plastic panel from the top of the camera.
- Locate the two screws on the top of the device.

Step 5



- Use the JIS J0 screwdriver to unscrew the two screws on the top of the device.

Step 6



- Use the plastic opening tool to pry off the back panel.

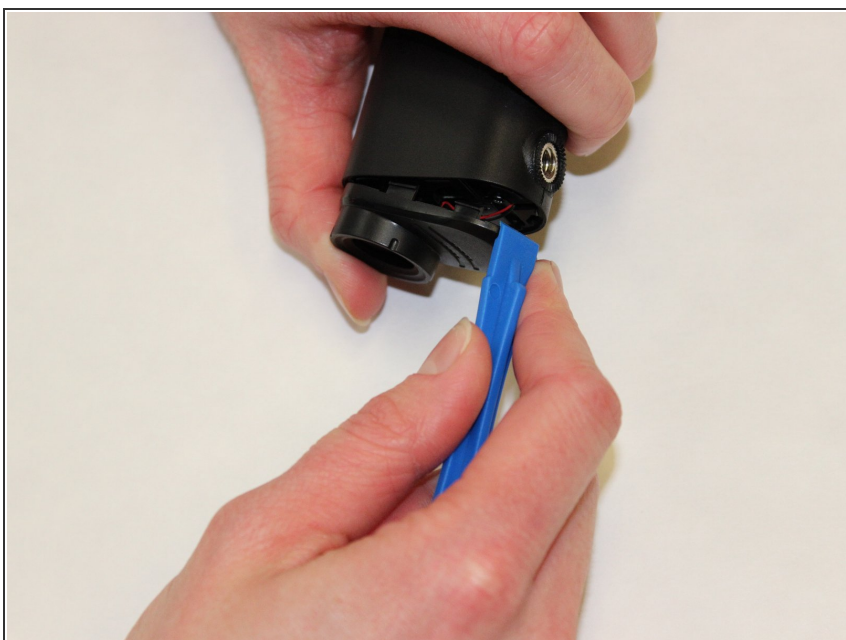
⚠ The back panel will come off easily.

Step 7



- Use the metal screwdriver to unscrew the screw from the back of the device.

Step 8



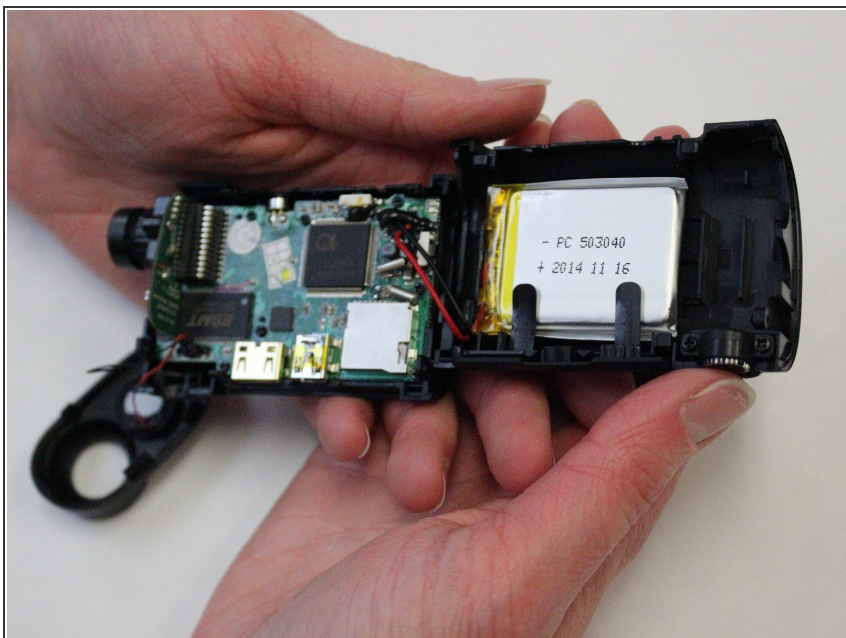
- Use the plastic opening tool to pry off the front panel of the device.

Step 9



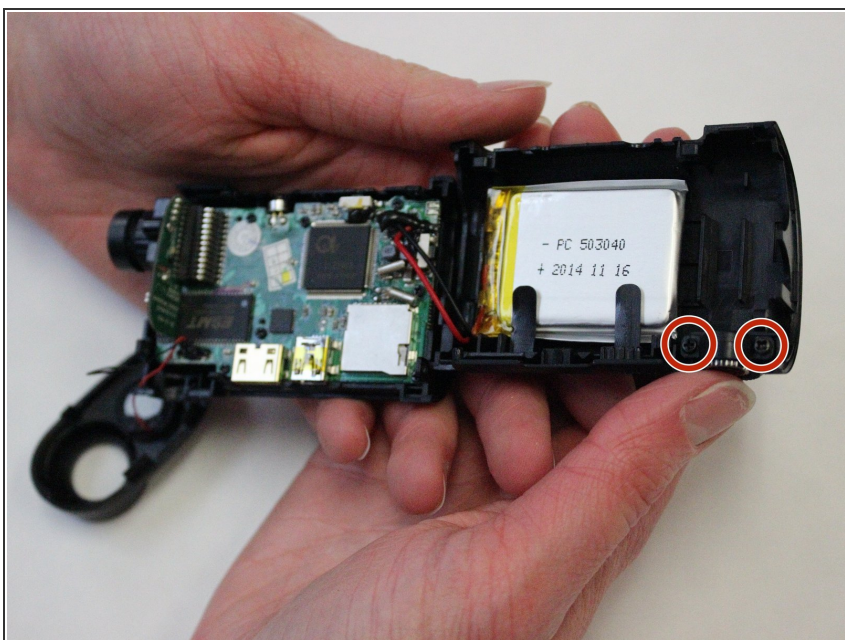
- Using the screwdriver, unscrew the screw located underneath the front panel.

Step 10



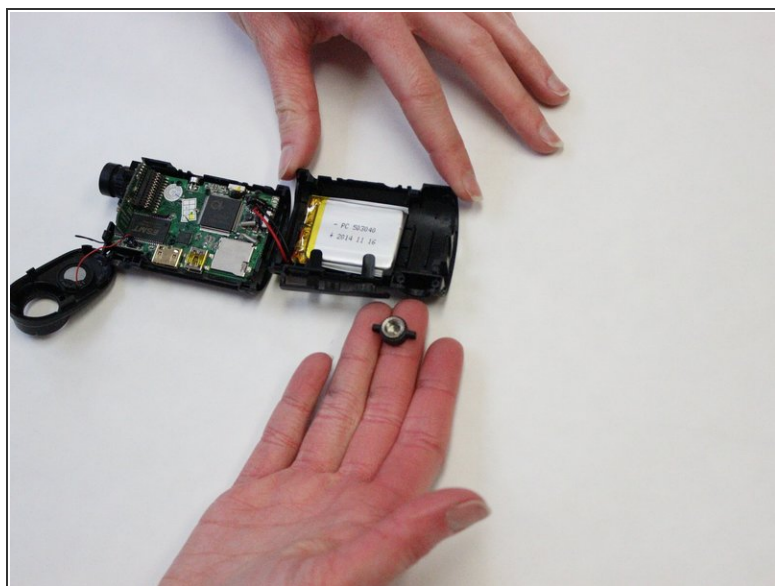
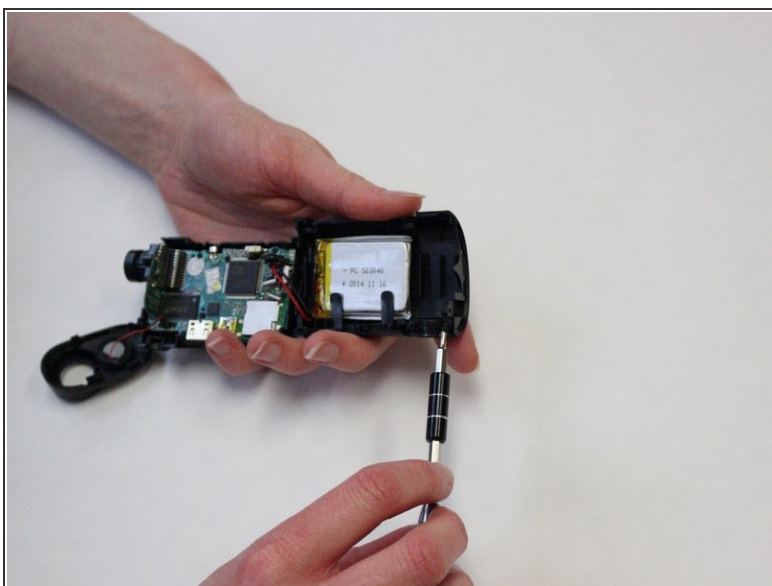
- ⚠ Be gentle with the device since there are wires attached to the front plate and two halves.
- Gently pull both sides of the device to expose the interior of the device.

Step 11 — Tripod Nut



- Locate the two screws that attach the tripod nut to the device.

Step 12



- Unscrew the two screws located on the back of the half that the tripod nut is located.
- Once the screws are removed, the tripod nut can easily be removed.

To reassemble your device, follow these instructions in reverse order.