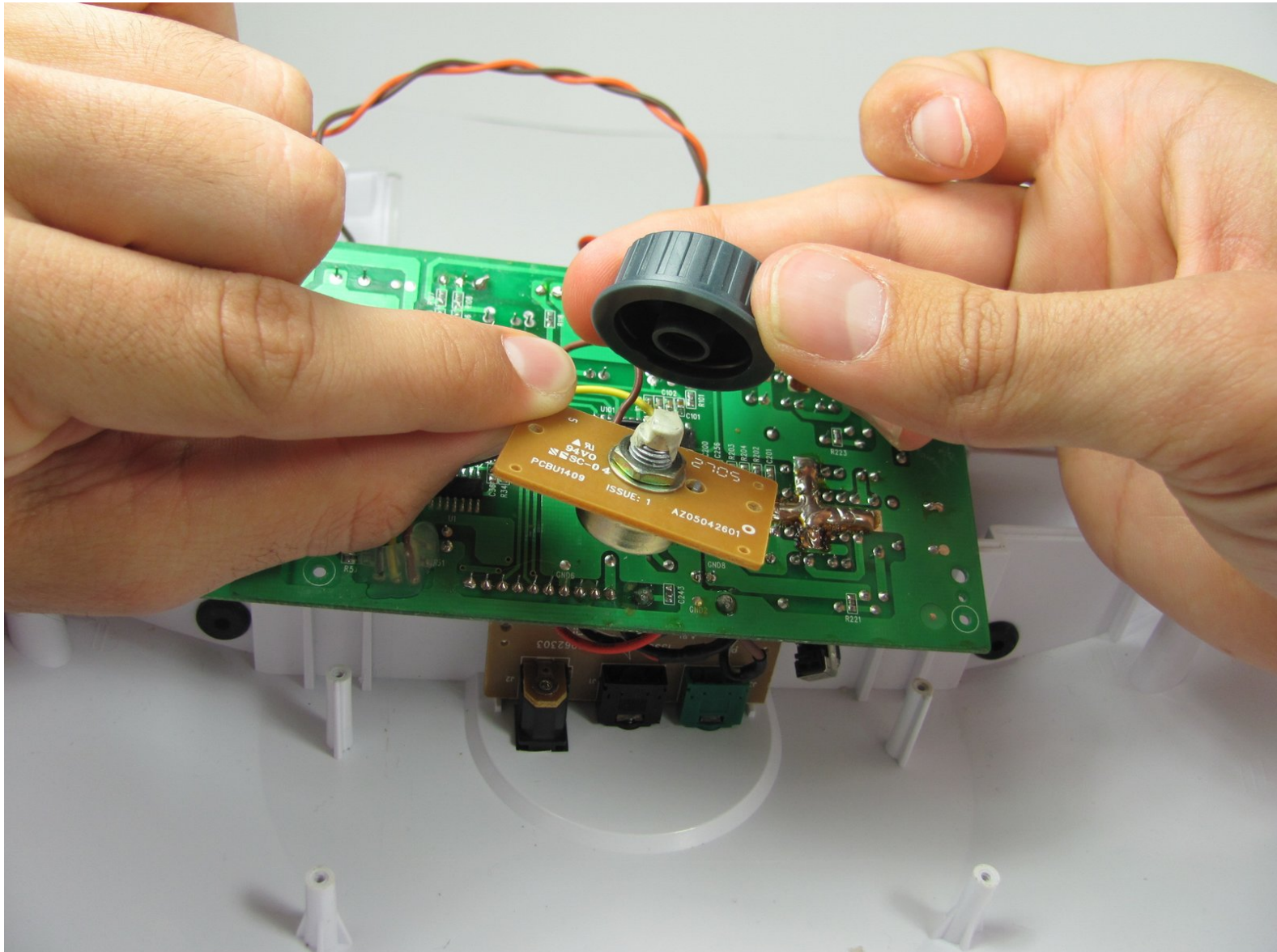




Sharper Image iPulse SI325 Light Intensity Dial Replacement

Use this guide to replace the light intensity dial.

Written By: Melissa Pasa



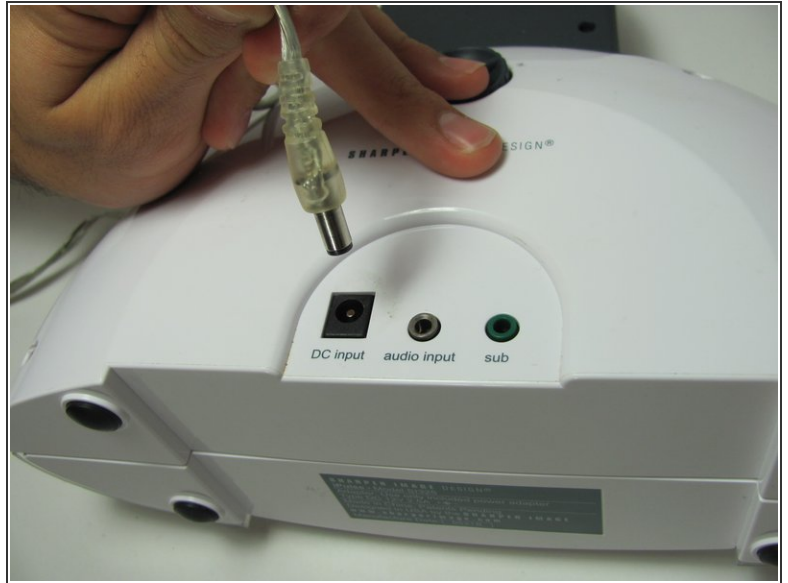
INTRODUCTION

This guide will demonstrate the replacement of the light intensity dial which controls the brightness of the LED lights. The dial is located on the back of the device on the same side as the inputs.

TOOLS:

- [Phillips #1 Screwdriver](#) (1)
 - [Phillips #2 Screwdriver](#) (1)
-

Step 1 — Outer Case




- Gently position the device so that the buttons and speakers lie face down.
- Unplug the power cord from the "DC Input."


Step 2




- Remove the four 12mm phillips head #2 screws located along the outer edge of the white case.

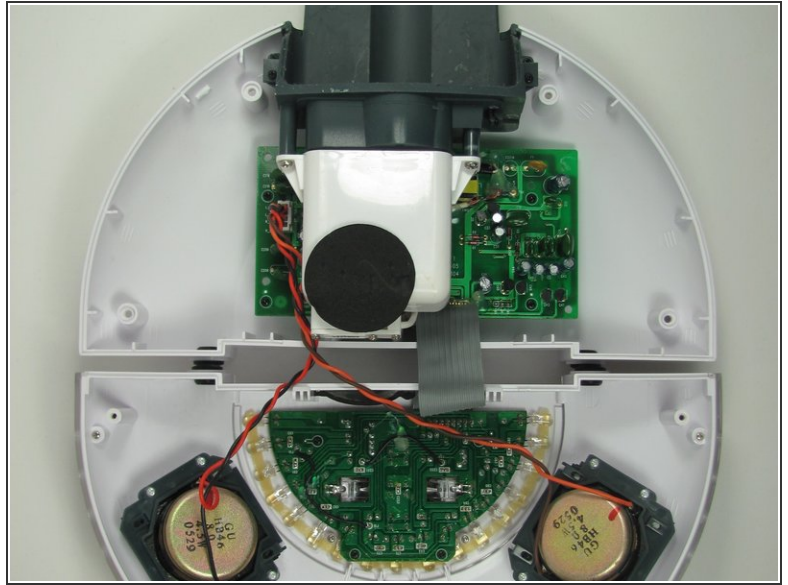
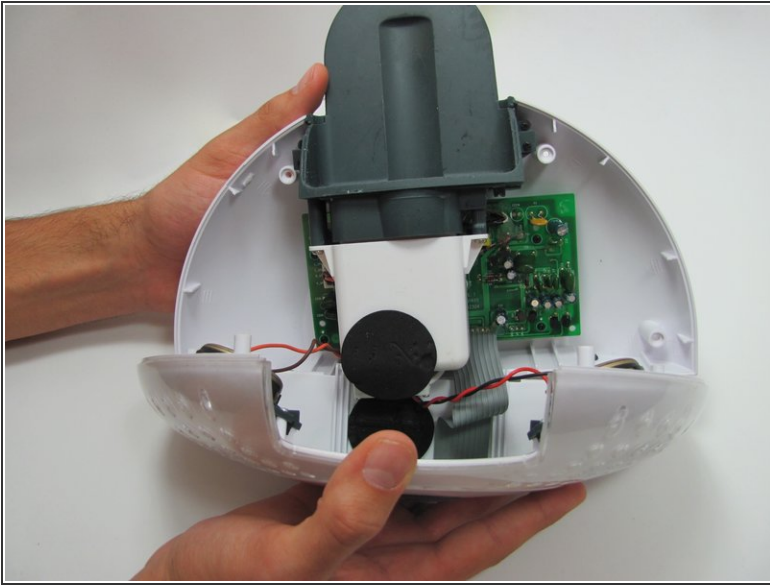
 Be careful! There are two small, easily-broken, plastic tabs at the bottom of the device keeping it together.

- Once you remove the screws, pick the device up so that the grey label on the bottom of the device faces toward you.
- With your thumbs on either side of the grey label, slowly push with both thumbs until the case pops open.

 A small gap will open as the two tabs are released.

 Do not pull the two halves apart yet. They are held together by the speaker wire.

Step 3



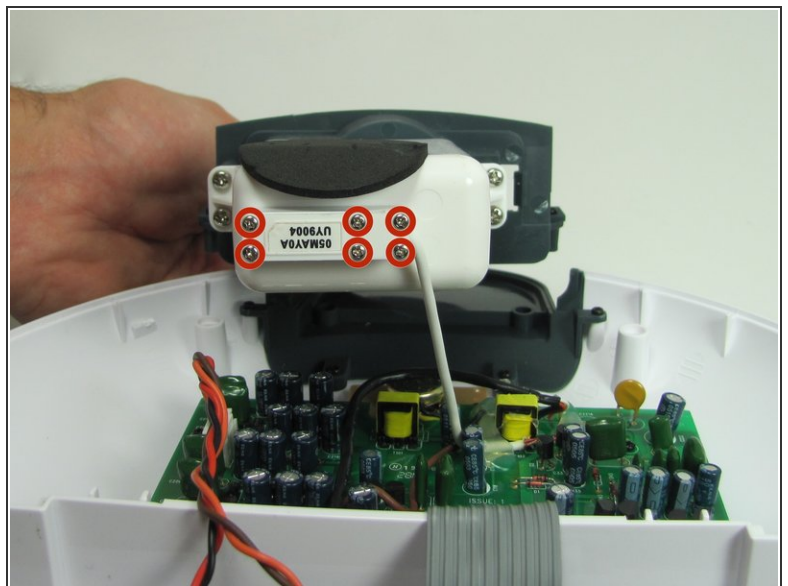
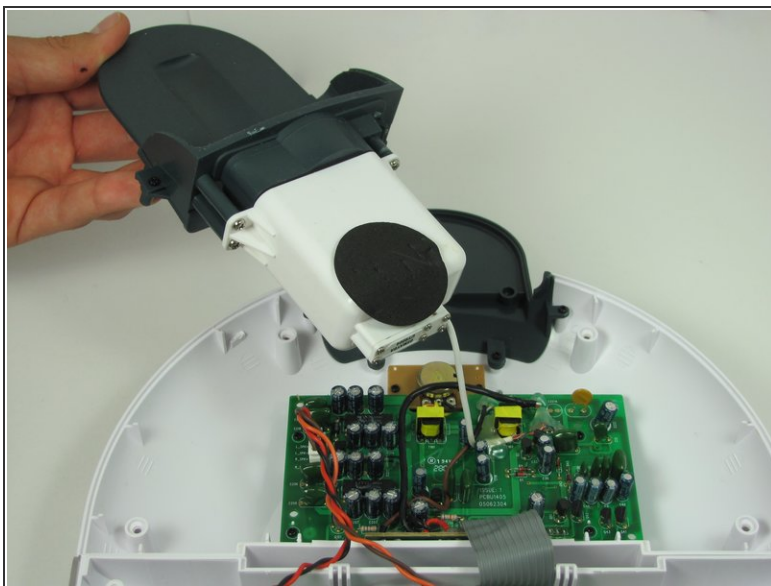
- Grip both sides of the top round part of the case and carefully open it like a clam. The bottom of the two halves are connected by the speaker wire. Do not separate by more than 1 centimeter.
- Grip either side of the top round part of the case and carefully open the device to reveal all the hidden treasures inside!
- Lay the device down, so that all the internal components are facing upwards.

Step 4 — Light Intensity Dial



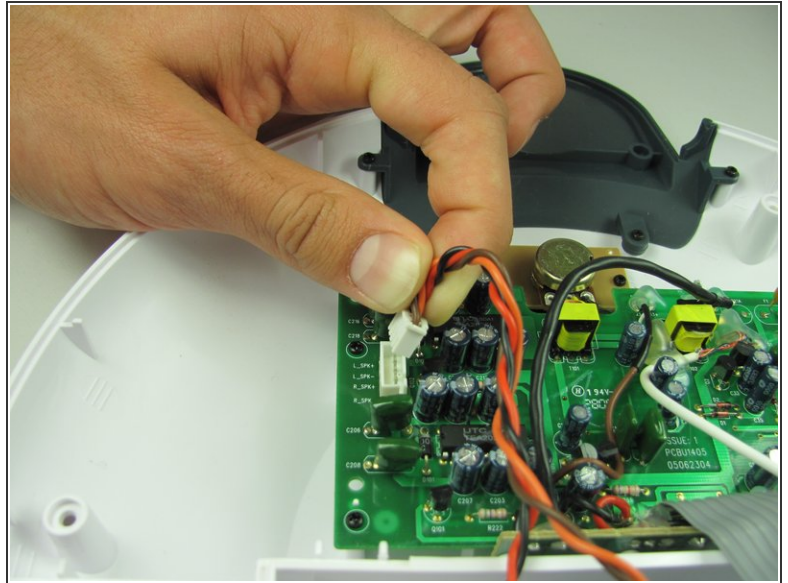
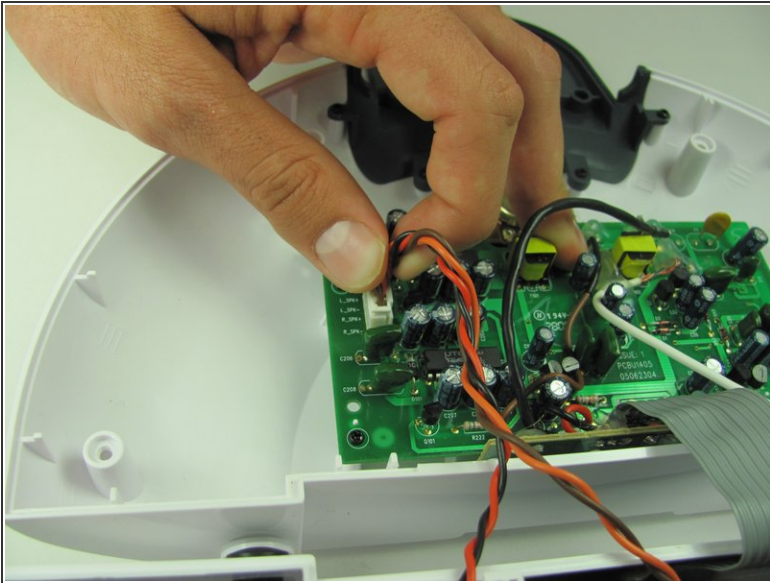
- Turn the device over so that the internals are facing down.
- Remove the three 7mm Phillips #1 screws connecting the Zipconnect unit.

Step 5



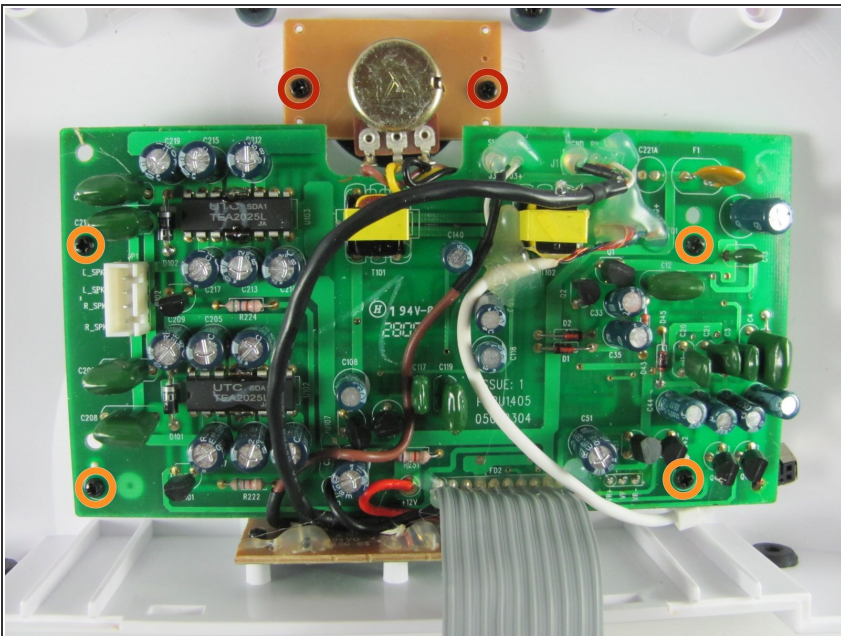
- Turn the device over again so you are looking at the internals.
- ⓘ The Zipconnect unit will lift out but will still be attached by a wire connected to the motherboard.
- Remove the six 7mm Phillips #1 screws attaching the Zipconnect unit to the motherboard wire and set the unit out of the way.

Step 6



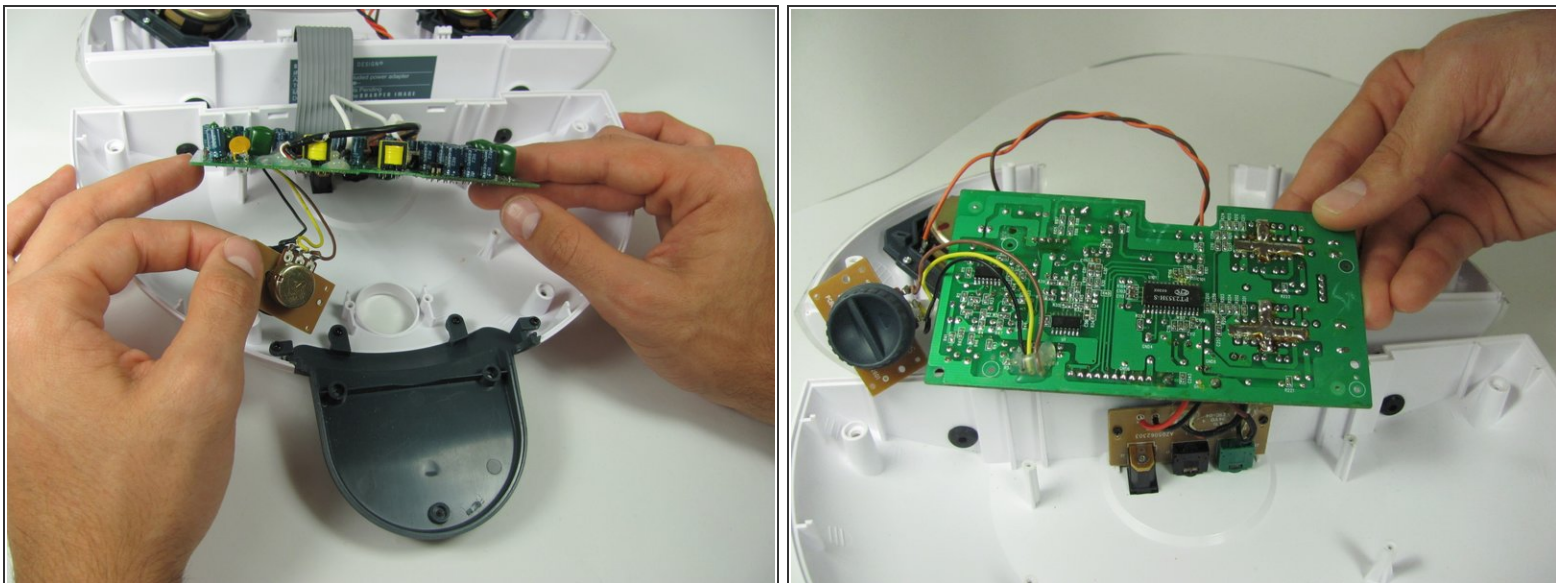
- Next, disconnect the speaker wire from the motherboard by firmly gripping the wires as close to the connection with two fingers as possible and pulling the connector out.
- ⓘ Moving the connector back and forth as you pull will make removal easier.

Step 7



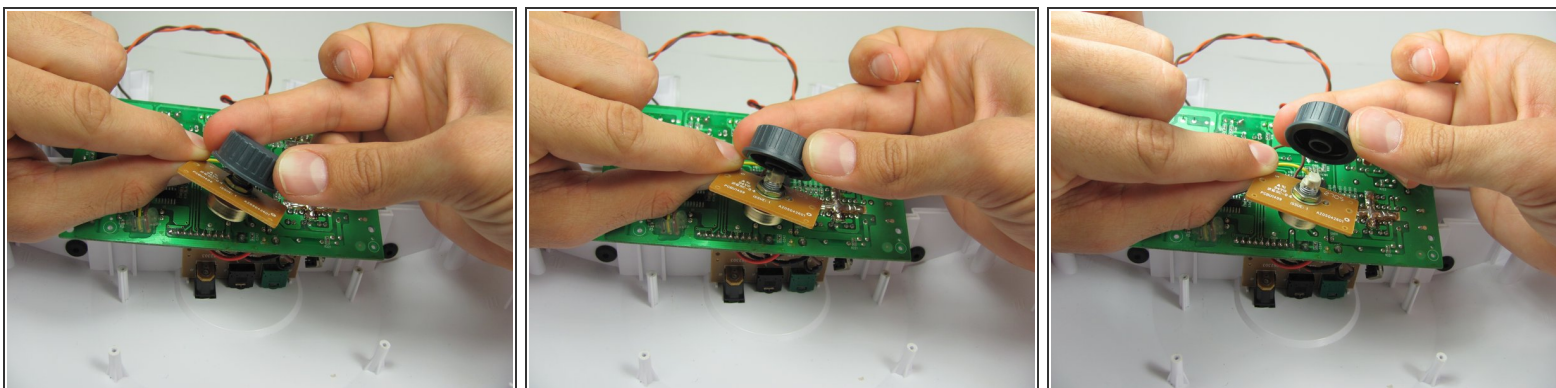
- Remove the two 11mm Phillips #1 screws attaching the small brown circuit board to the plastic case.
- Also remove the four 11mm Phillips #1 screws attaching the motherboard to the plastic case.

Step 8



- Lift up on both the motherboard and brown circuit board that contains the light intensity dial and turn the motherboard over.

Step 9



- Hold the brown circuit board with one hand and the light intensity dial with two fingers of your other hand and carefully pull them apart.

To reassemble your device, follow these instructions in reverse order.