



# Shift 6m Repairability Assessment

Repairability Assessment of the Shift 6m performed on August 14, 2019.

Written By: Tobias Isakeit



## INTRODUCTION

The Shift 6m from 2018 is an easy-to-open phone that has a user-removable battery. It nearly reaches repairability perfection by prioritizing screen repair and shipping with a mini screwdriver in the box for disassembly.



### TOOLS:

- [Spudger](#) (1)
  - [iFixit Opening Tools](#) (1)
  - [iFixit Opening Picks set of 6](#) (1)
  - [T3 Torx Screwdriver](#) (1)
  - [ESD Safe Tweezers Blunt Nose](#) (1)
-

## Step 1 — Shift 6m Repairability Assessment



- Exterior reference shots.
  - ❗ In the box you'll find a mini Torx T3 screwdriver. All the screws in the device are identical T3 screws.
- As on every Shiftphone's rear panel, we find a refreshing note at the bottom.

## Step 2



- The 5.7" Shift 6m on the left/bottom is only 1 mm thicker compared to the 5" Shift 5.1 on the right/top.

## Step 3



- The back cover and battery are both user removable and easy to replace—no tools required.
- The back cover houses the NFC antenna.
- With its 16.3 Wh (4242 mAh @ 3.85 V) the Shiftphone's battery surpasses the [iPhone Xs Max](#) (12.08 Wh) and even the [Galaxy S10](#) (13.09 Wh), but falls behind Huawei's Mate 20 X (19.1 Wh).

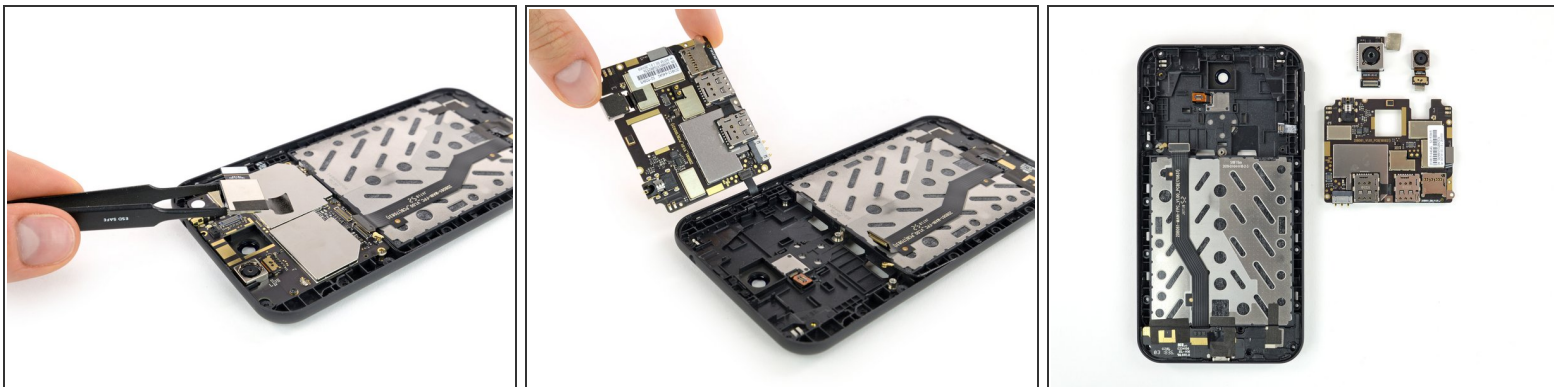
## Step 4



- After removing 16 standard Torx T3 screws, we pry the screen off the mid-frame and disconnect it from the motherboard.
- A small rubber gasket and the earpiece speaker are slightly glued to the screen.

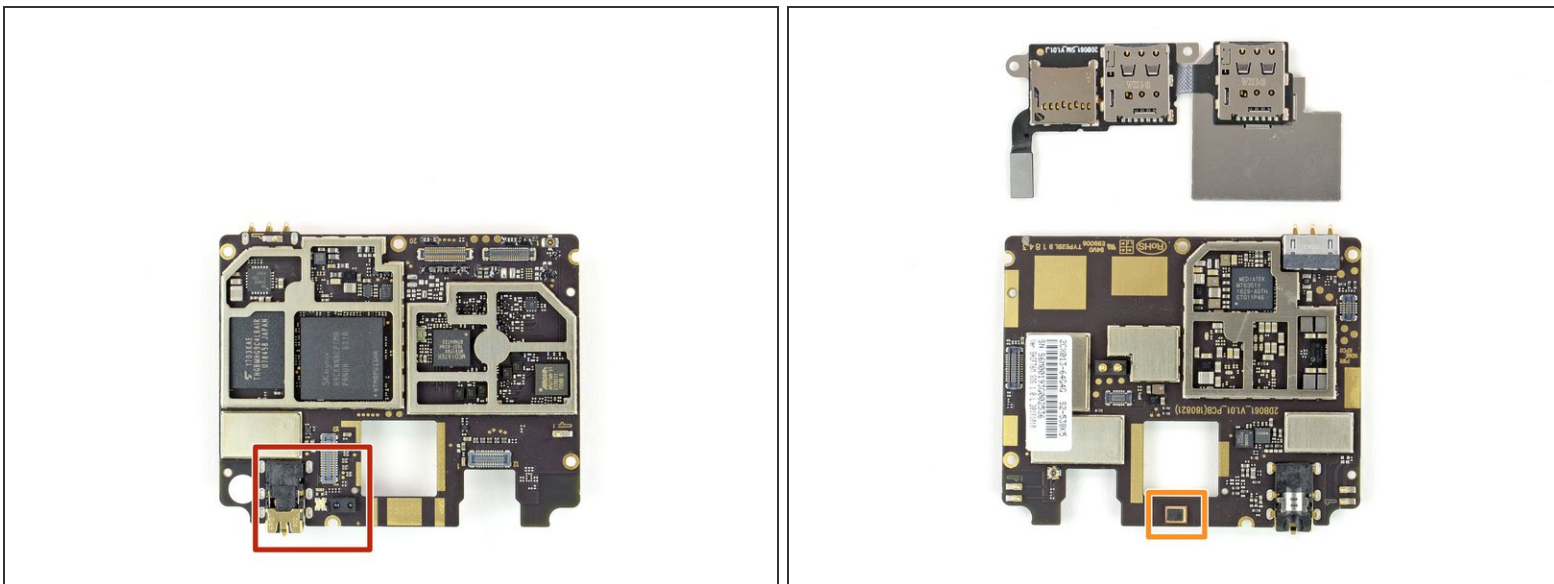


## Step 5



- The rear camera can be disconnected and removed right away.
- Although the front-facing camera is connected on top of the motherboard, a small adhesive strip holds it to the back.
- The power and volume button and fingerprint sensor connectors are inconveniently located on the back of the motherboard.

## Step 6



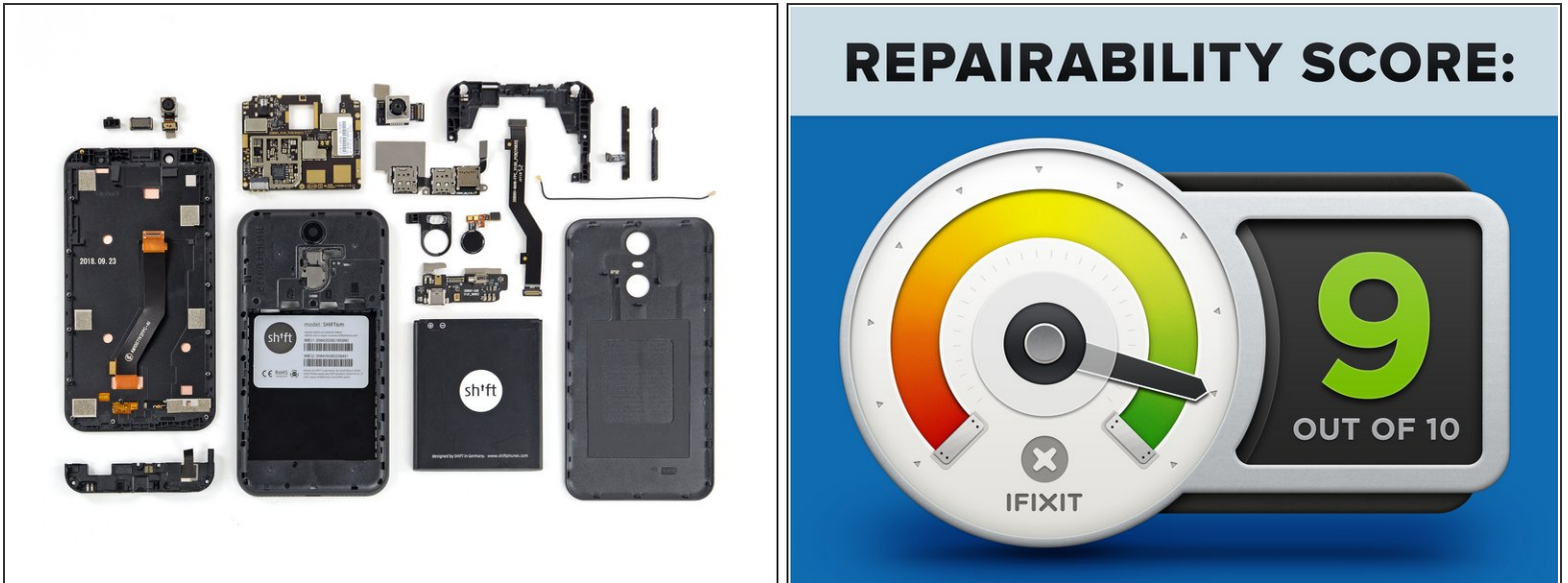
- The headphone jack, proximity sensor, and front-facing LED are soldered to the motherboard.
- On the other side there is a noise-cancelling microphone, as well as removable SIM card and SD card slots.

## Step 7



- The last parts to come out of the mid-frame are:
  - The daughterboard with the interconnect and antenna cable connected underneath.
    - ⓘ Soldered onto the board is the vibration motor and the USB-C port.
  - The fingerprint sensor and flash unit.
  - The power and volume buttons.
- Surprisingly, the top and bottom antennas can be removed from the frame with the bottom part carrying the loudspeaker.

## Step 8



- The Shift 6m earns a **9 out of 10** on our repairability scale (10 is the easiest to repair):
  - Battery and screen repairs are prioritized.
  - Only one type of screw head and length are used throughout the phone.
  - The manufacturer provides a few repair guides, and a screwdriver is shipped with the phone.
  - Most components are modular and can be replaced individually.
  - Some cables are quite short and components overlap, making repairs more complicated than necessary.