



ShowerDoorDirect Shower Speaker Battery Replacement

Follow this guide to replace the battery in your shower door direct speaker.

Written By: Matthew Dunkle



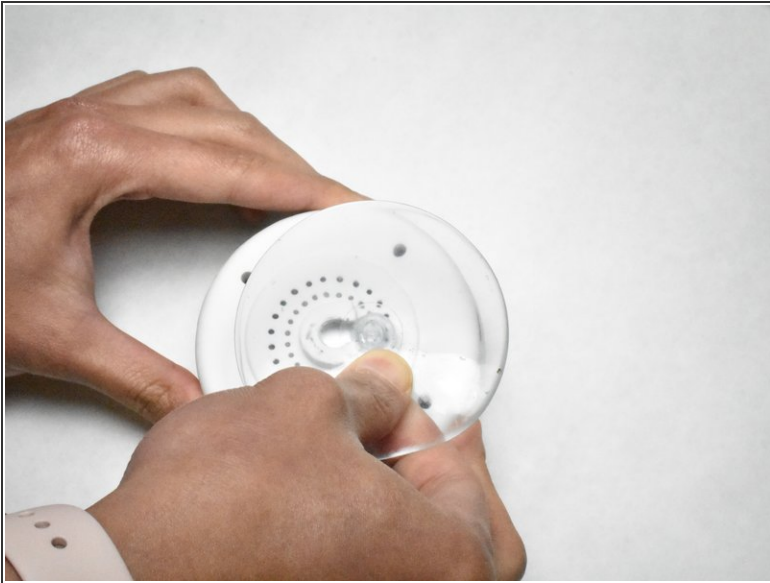
INTRODUCTION

For this repair you will learn how to replace a battery, one topic that will need to be understood is how to use a soldering iron. Being able to use that will have a big effect on replacing the battery.

TOOLS:

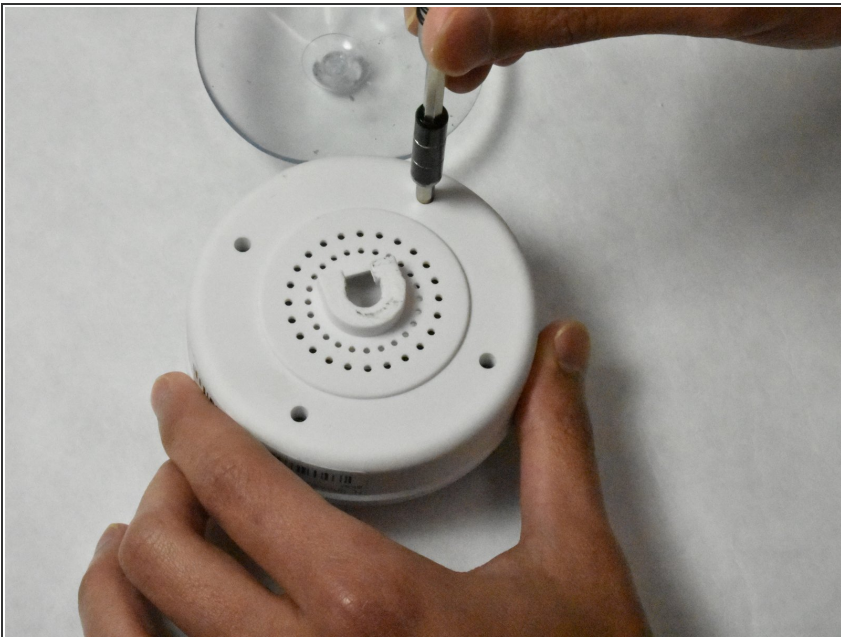
- [Phillips #1 Screwdriver](#) (1)
 - [Soldering Iron](#) (1)
 - [Solder](#) (1)
-

Step 1 — Battery



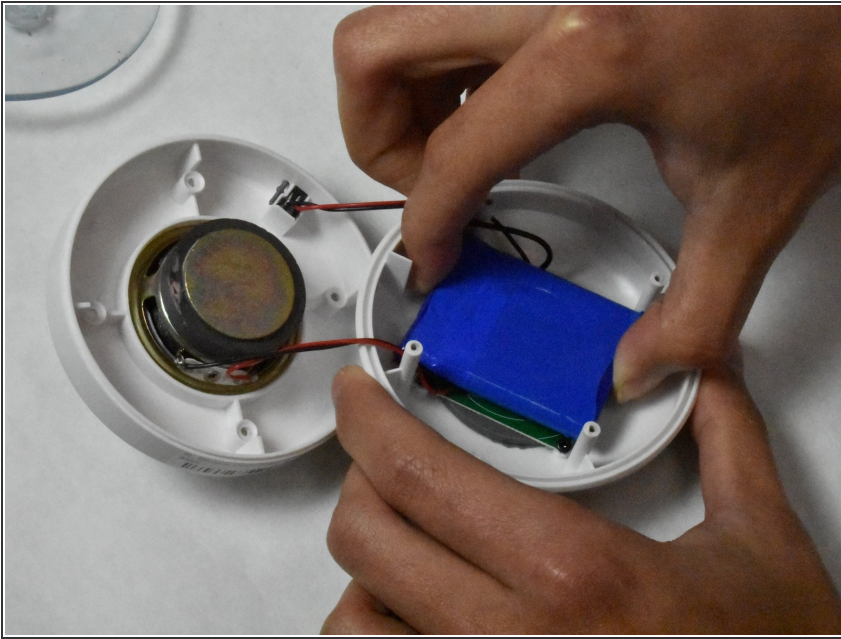
- Remove the suction pad by pulling the suction out of the slot that it is in.

Step 2



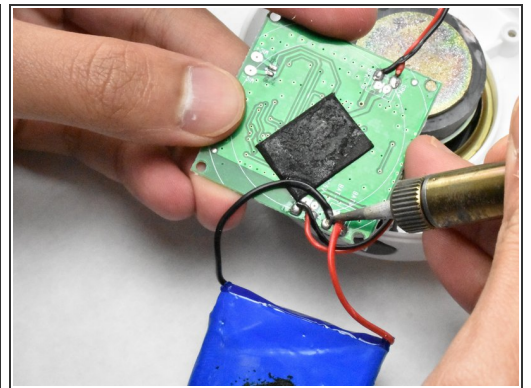
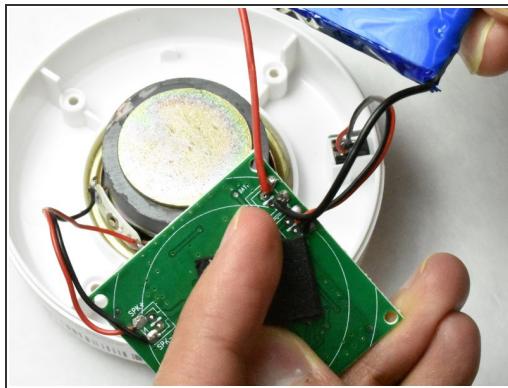
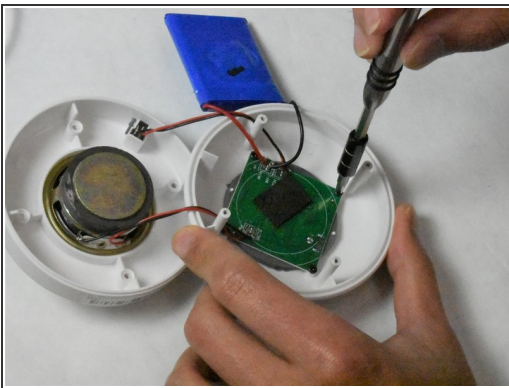
- Remove the four 9.09mm Philips #1 screws that hold the 2 pieces of the cover together.
- Pull apart the two halves.

Step 3



- Hold the base and pull up on the battery.

Step 4



- Remove the four 5mm Phillips #1 screws from the motherboard.
- Desolder the two wires connecting the battery to the motherboard.

To reassemble your device, follow these instructions in reverse order.