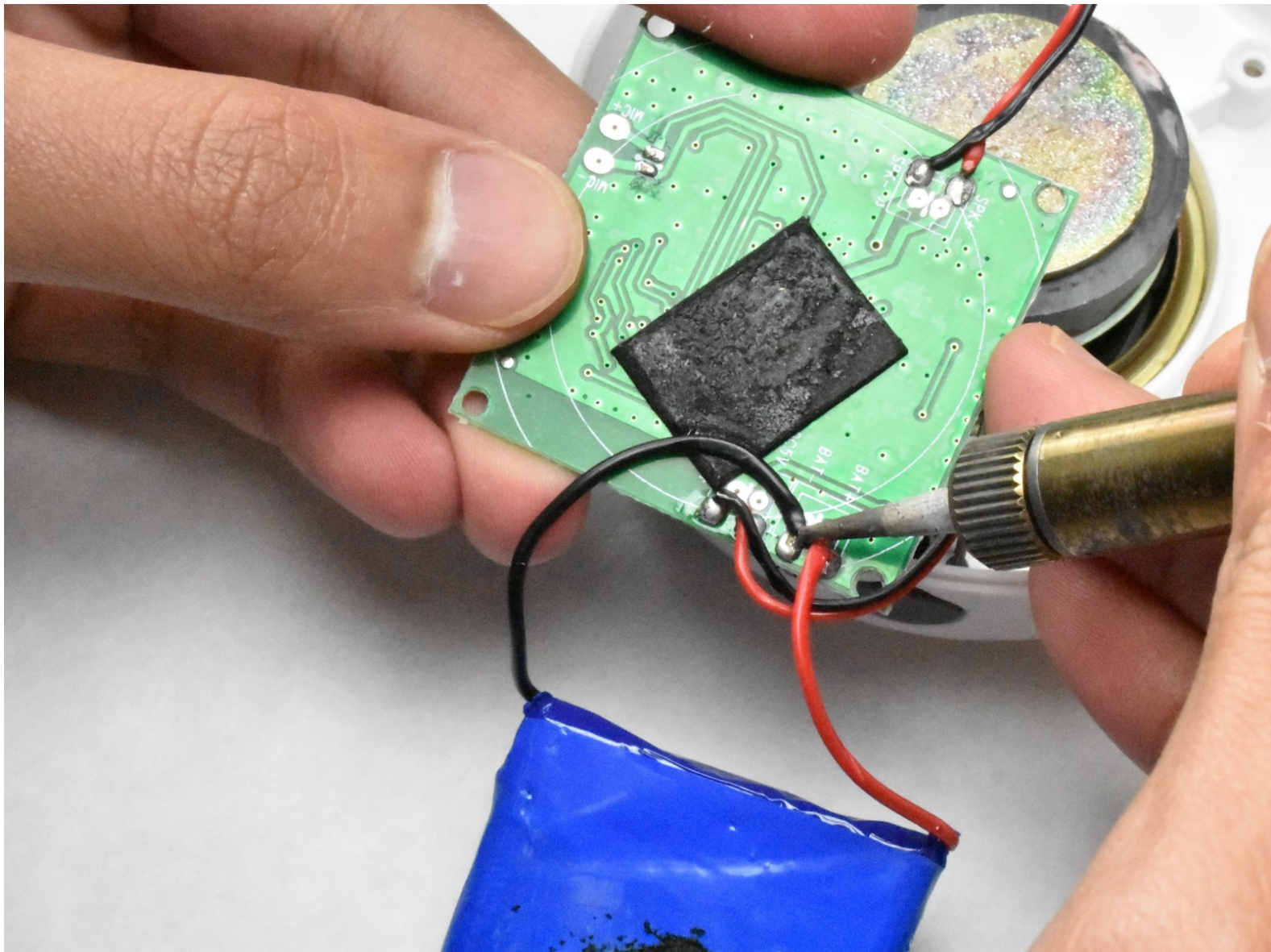




ShowerDoorDirect Shower Speaker Motherboard Replacement

Follow this guide to replace the motherboard in your showerdoordirect speaker.

Written By: Matthew Dunkle



INTRODUCTION

For this repair, you will learn how to replace a motherboard. An important aspect would be knowing how to use the soldering iron.

TOOLS:

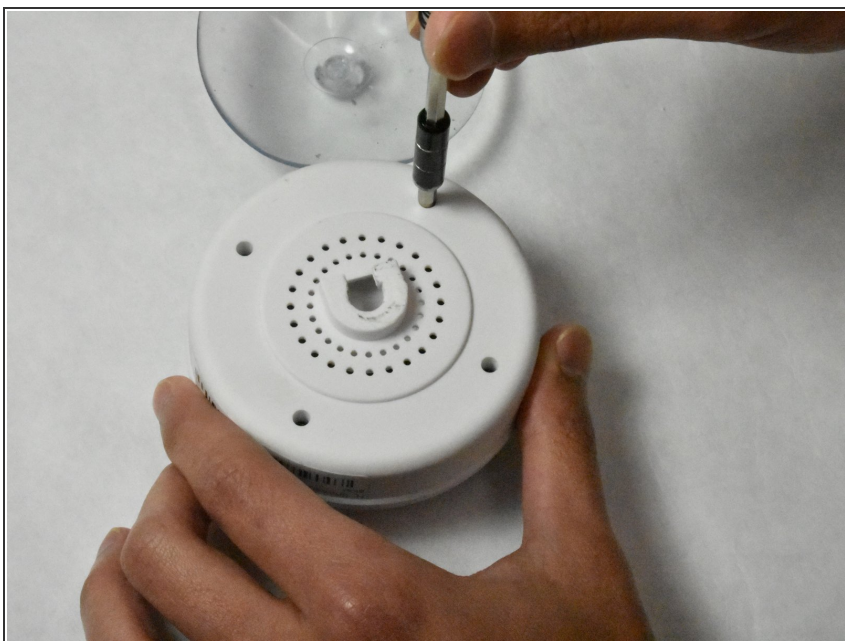
- [Phillips #1 Screwdriver](#) (1)
 - [Soldering Iron](#) (1)
 - [Solder](#) (1)
-

Step 1 — Battery



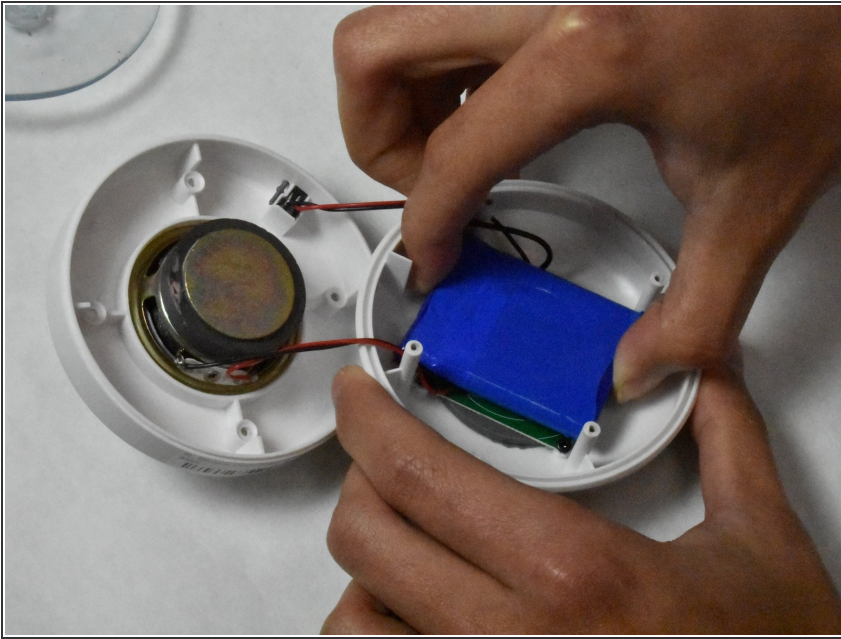
- Remove the suction pad by pulling the suction out of the slot that it is in.

Step 2



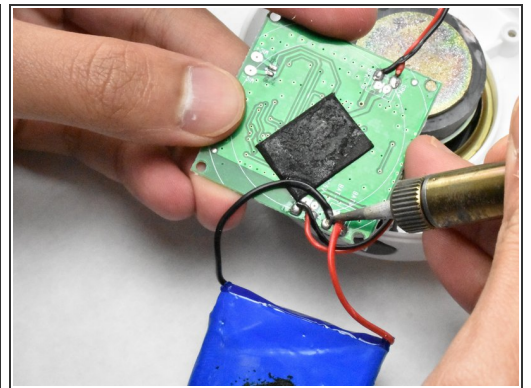
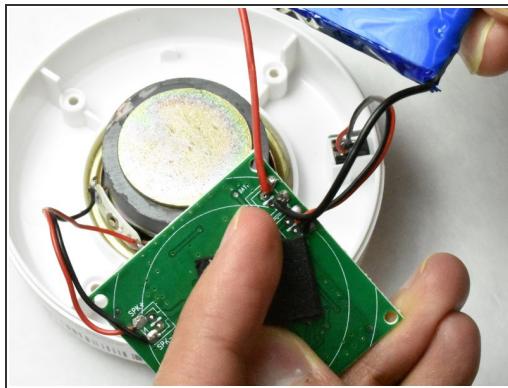
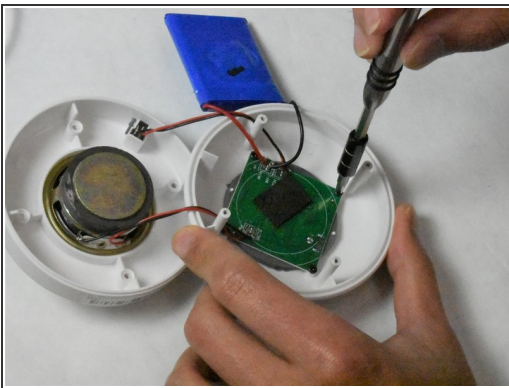
- Remove the four 9.09mm Philips #1 screws that hold the 2 pieces of the cover together.
- Pull apart the two halves.

Step 3



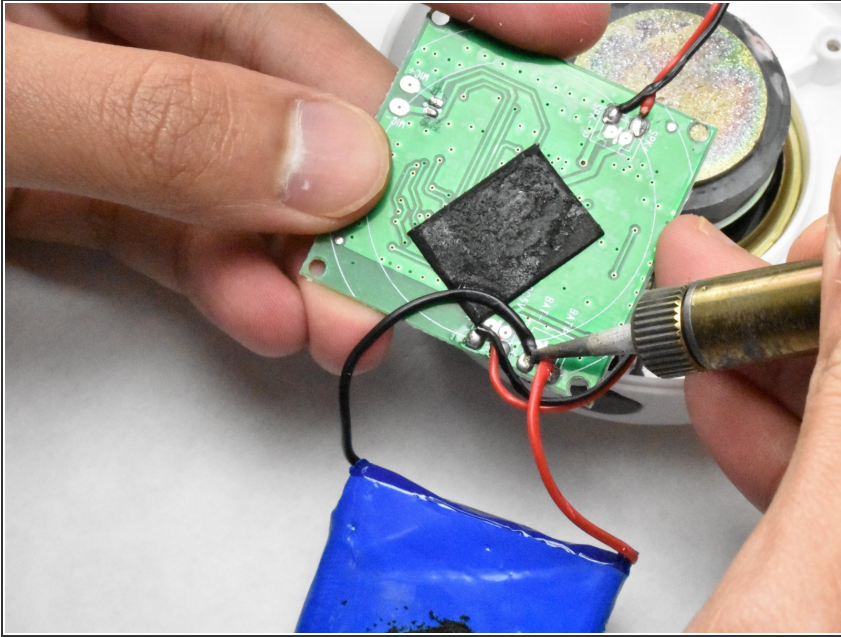
- Hold the base and pull up on the battery.

Step 4



- Remove the four 5mm Phillips #1 screws from the motherboard.
- Desolder the two wires connecting the battery to the motherboard.

Step 5 — Motherboard



- Desolder the four remaining wires that are connected to the motherboard.

To reassemble your device, follow these instructions in reverse order.