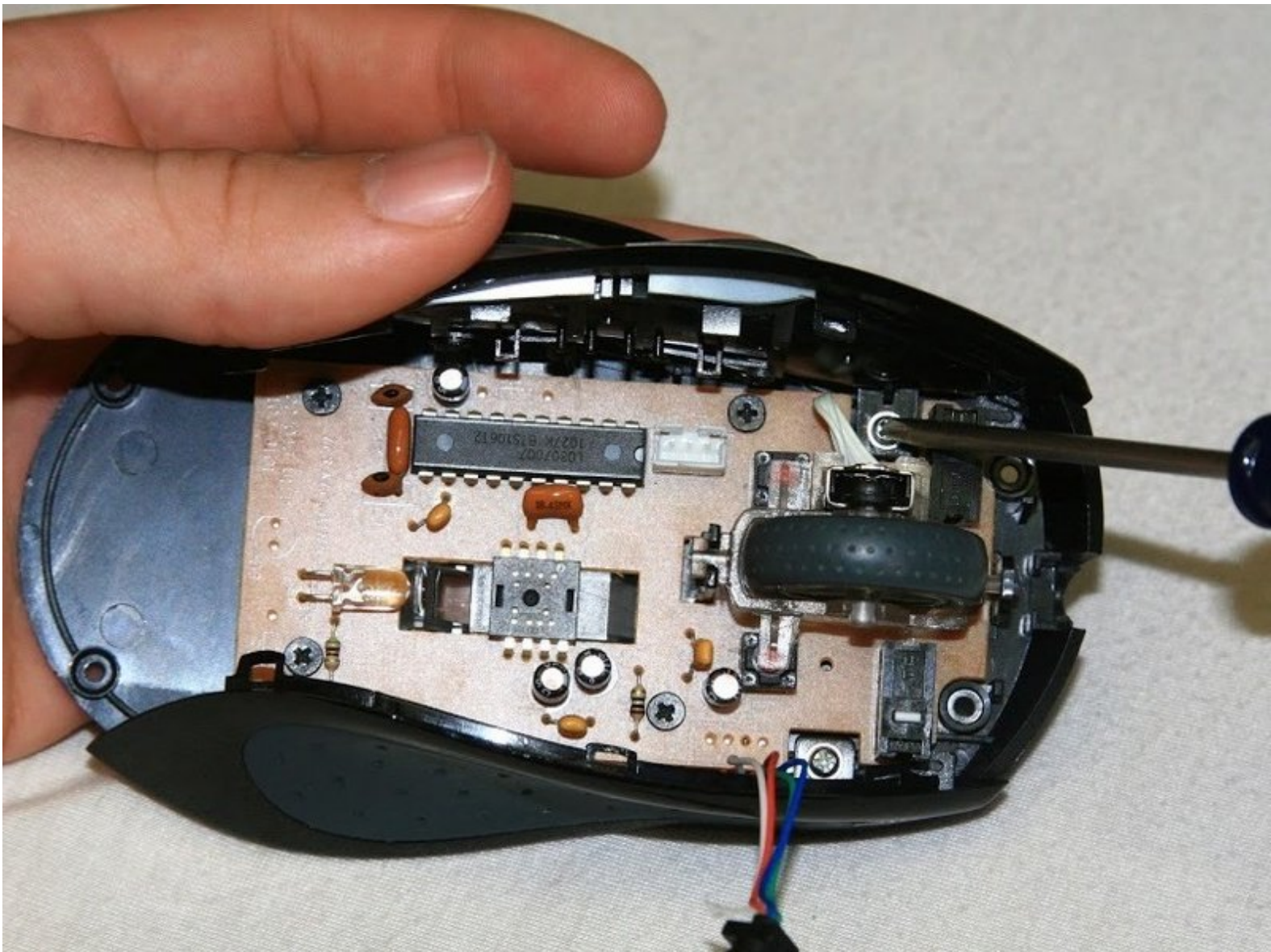




# Side Removal

This Guide will demonstrate how to remove the side panels off the mouse.

Written By: royceeklund

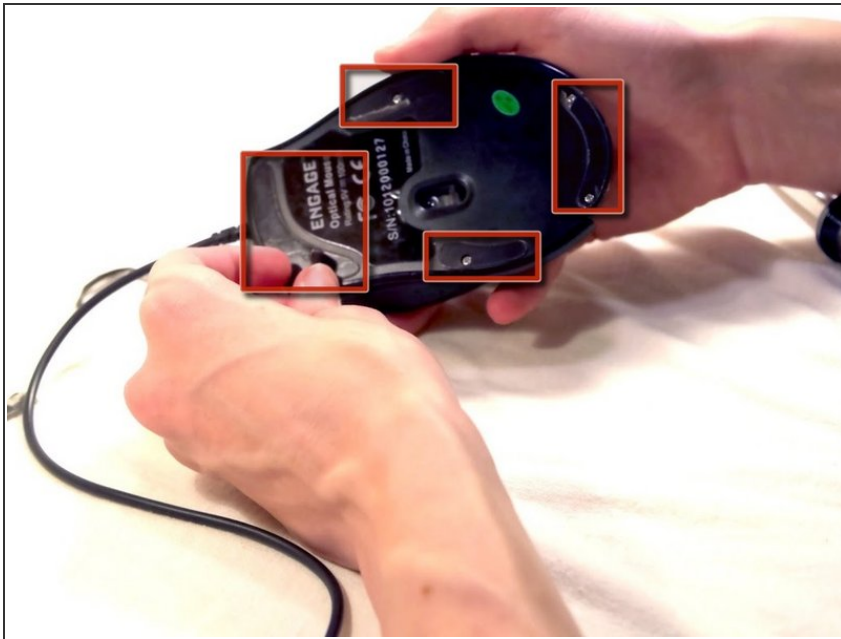




## TOOLS:

- [Capacitor Discharge Tool](#) (1)
  - [Phillips #1 Screwdriver](#) (1)
  - [Spudger](#) (1)
-

## Step 1 — Top Assembly



- Flip the mouse over and peel off the stickers on the perimeter of the bottom of the mouse

## Step 2



- Use the Phillips #1 screwdriver to unscrew the six round head screws on the bottom of the mouse. Those marked with squares are 9 mm in length, the rest are 5 mm in length.



### Step 3



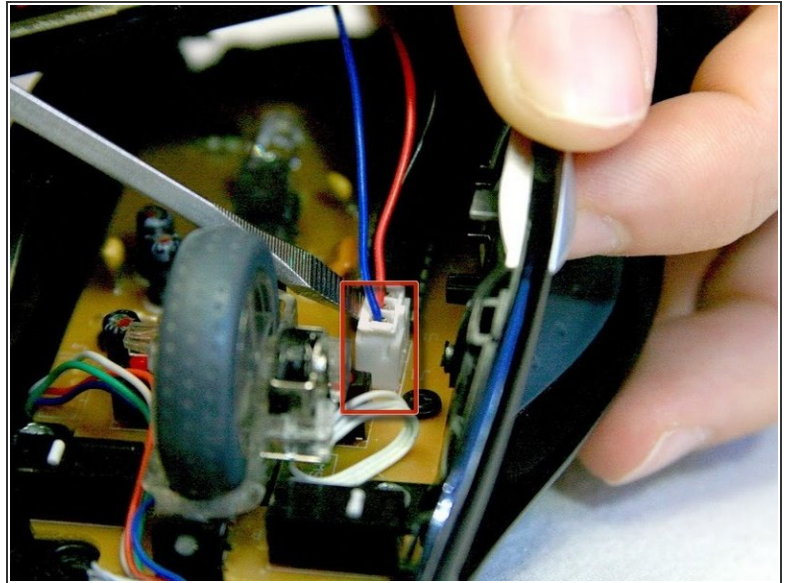
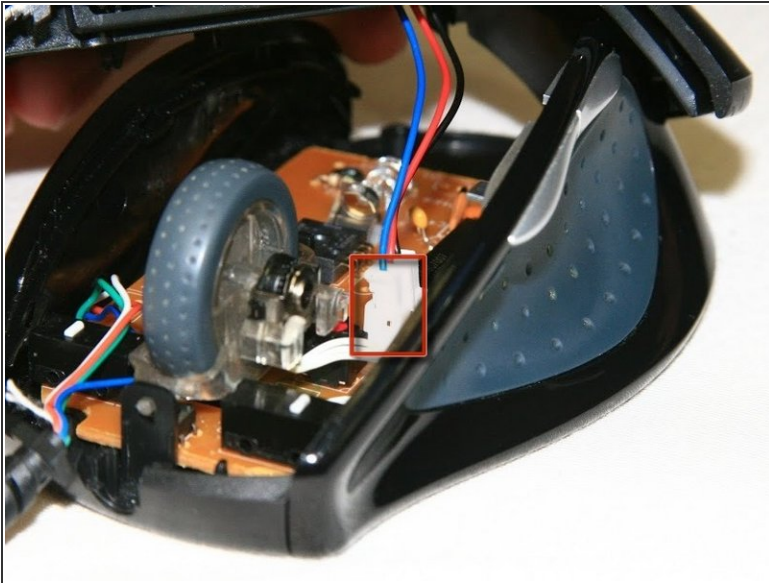
- Grab the top shell of the mouse and lift up to remove.

### Step 4



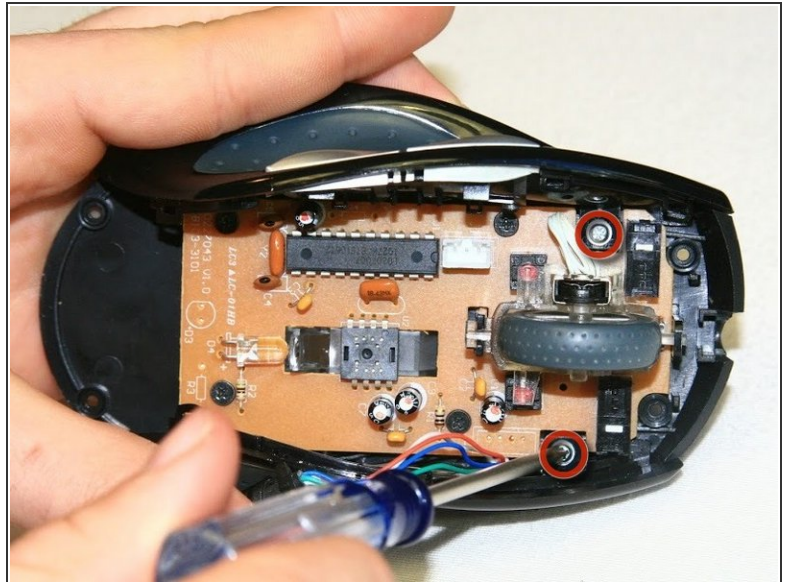
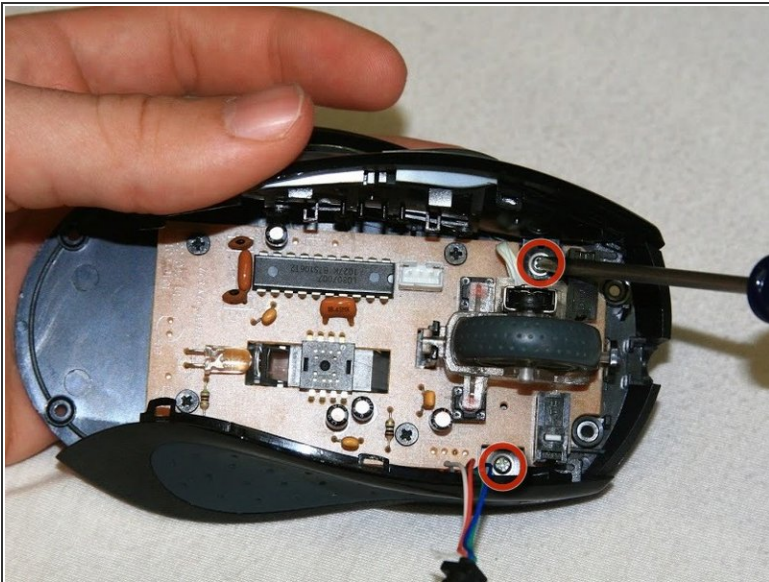
- ⚠ The capacitors on this board can release stored electrical energy if touched.
- Touch your capacitor discharge tool to the capacitor leads on the board to release the stored energy. If leads are inaccessible, wait until you've removed the board from the mouse body.

## Step 5



- To remove the white wire connector on the bottom board, use a spudger underneath the white plug and pop it out (this disconnects the upper board from the lower board).

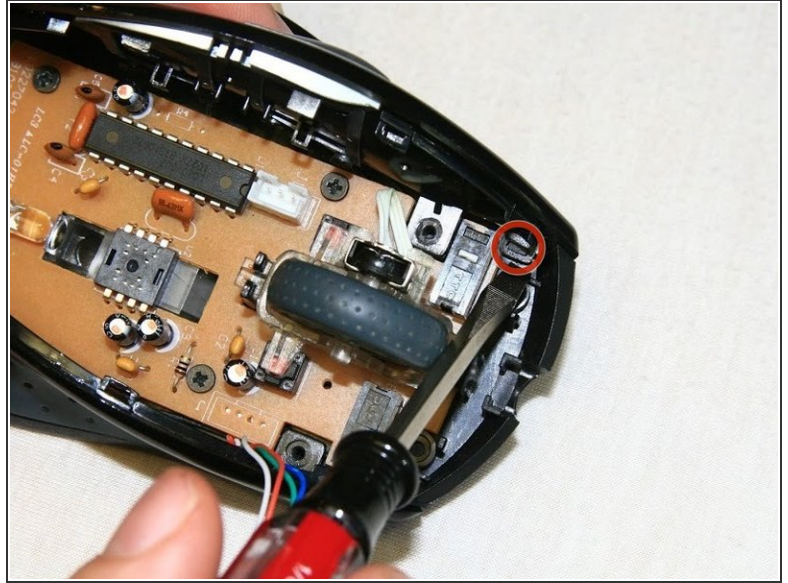
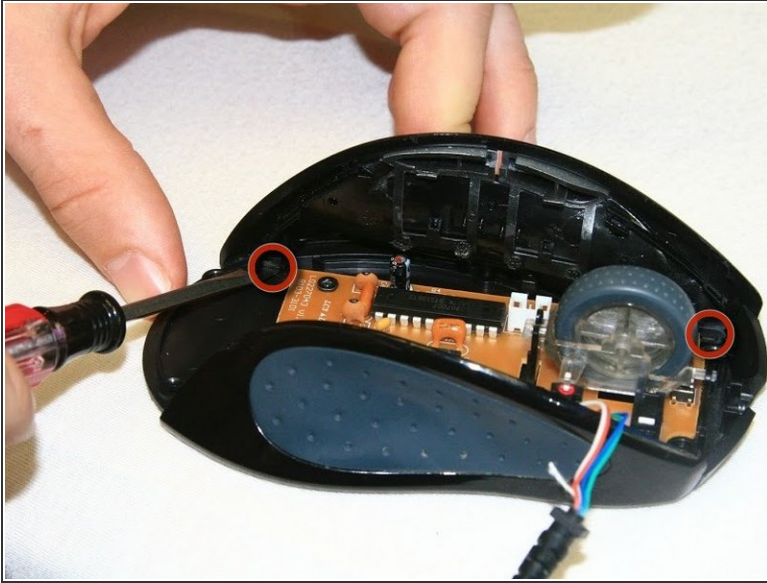
## Step 6 — Side Panels



- Locate the 5 mm silver flat head mounting screws (2) to the left and right of the scroll wheel and remove with the Phillips #1 screwdriver.

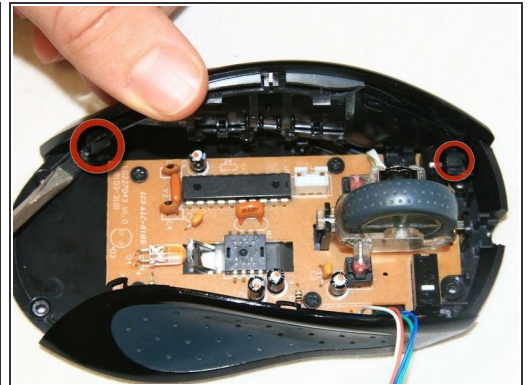
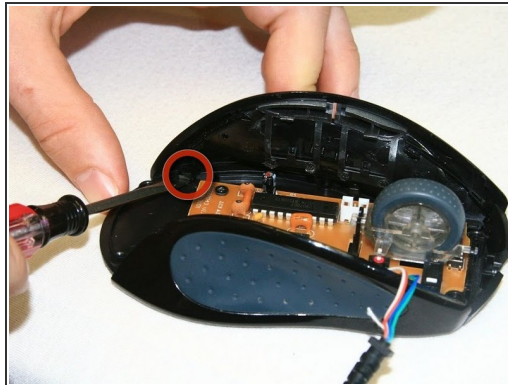
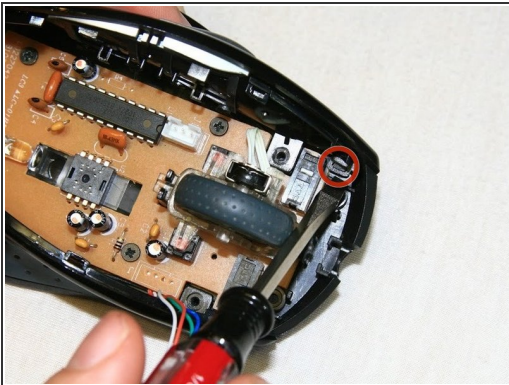


## Step 7



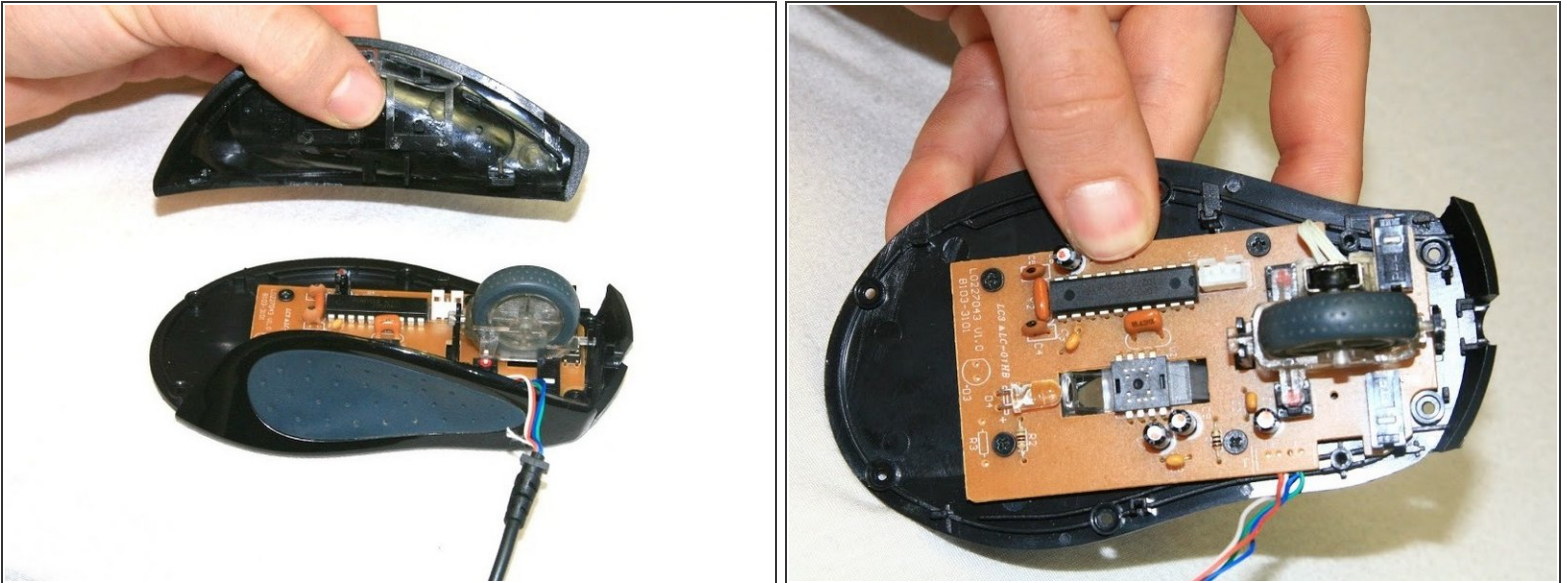
- Locate the snaps on the bottom corners of the mouse side panels and pop the indicated snaps out, using a spudger or your fingernail.

## Step 8



- Repeat Step 6 for the opposite side panel in order to detach both sides from the base of the mouse.

## Step 9



- Grab the sides of the mouse and lift them up to detach from the base of the mouse.

To reassemble your device, follow these instructions in reverse order.