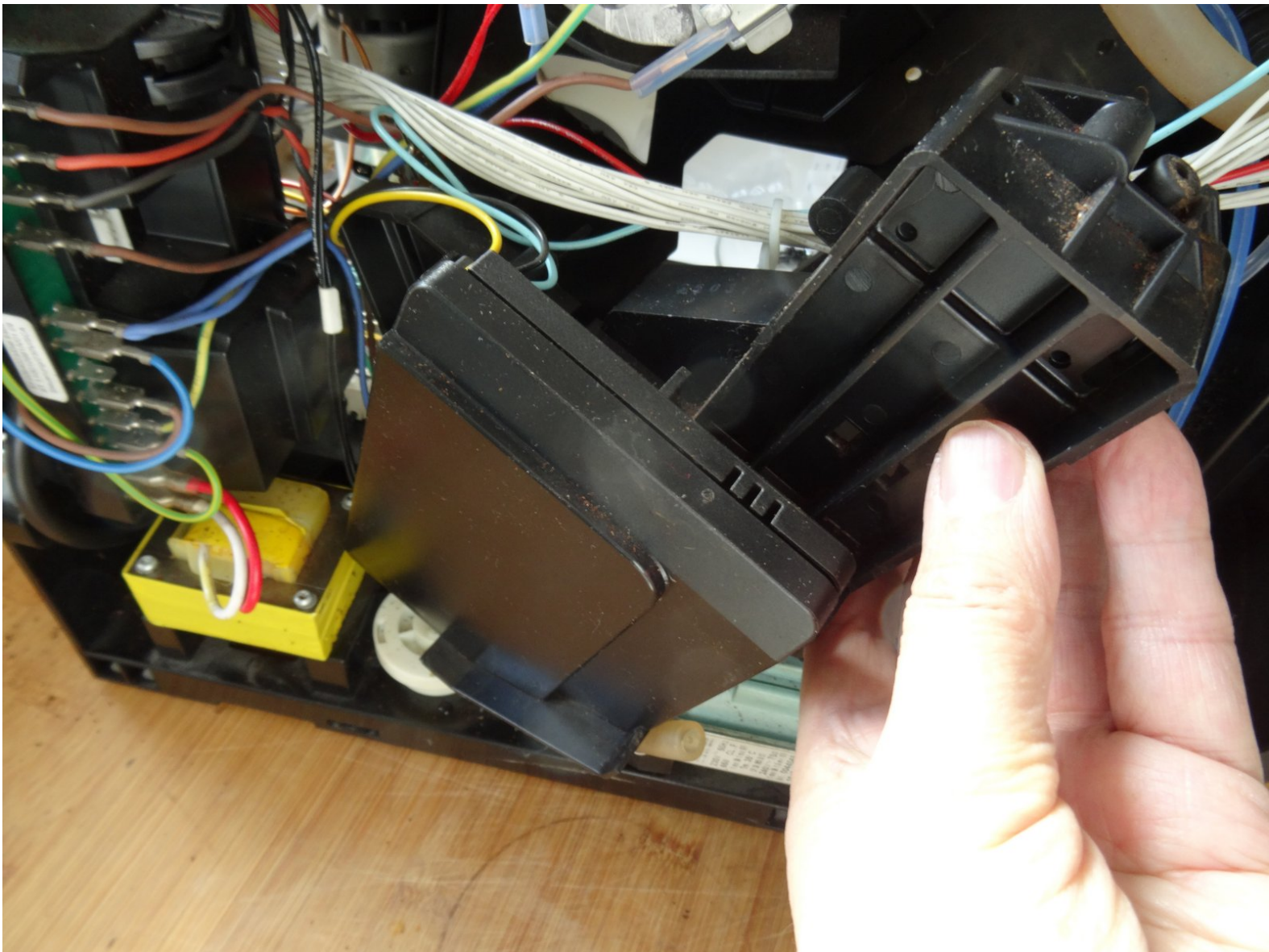




# Siemens Surpresso gear drive replacement

Replacement of the gear drive in the Siemens Surpresso Compact

Written By: VauWeh



## INTRODUCTION

If the coffee only flows into the drip tray and not in your cup the drainage valve maybe damaged. You can replace the gaskets or simply replace it with a new one.



### TOOLS:

- [T10 Torx Screwdriver](#) (1)
- [Flathead Screwdriver](#) (1)





### PARTS:

- [New Item](#) (1)

## Step 1 — Opening the Siemens Surpresso Compact



 Unplug your coffee maker!

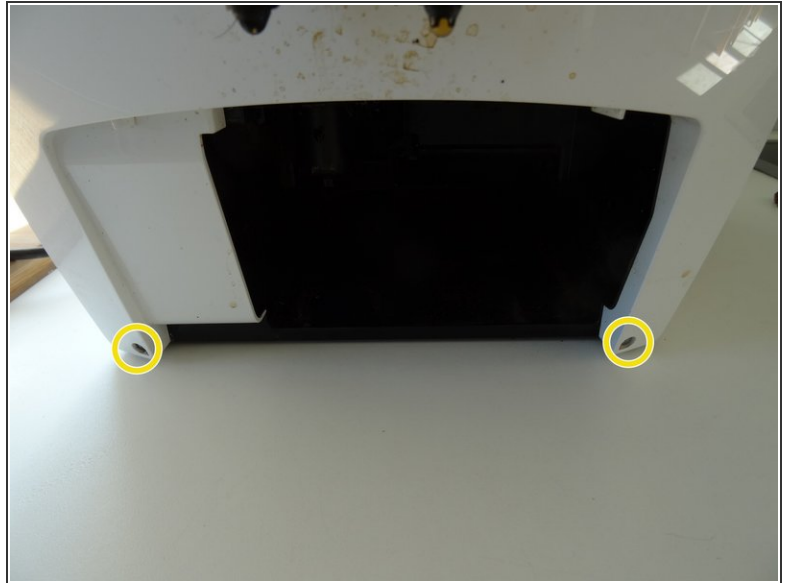
- Remove the water container, the brew group and the drip tray with pomace container.
- Using a spoon, remove as much of the coffee beans as possible from the coffee bean container.
-  Depending on the model, additional sensors with cables may be installed on the top and side panels. You have to remove these before you can completely remove the housing parts.

## Step 2



- Remove the two Torx T10 screws on the top.

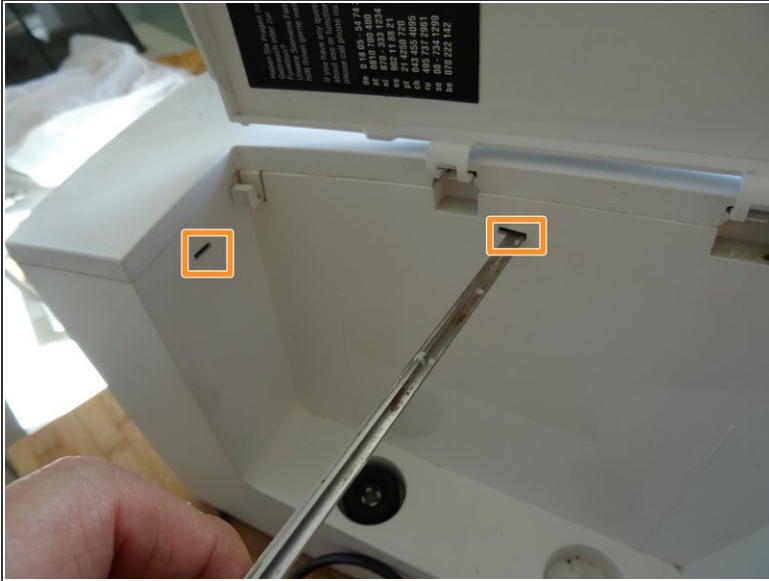
### Step 3



- Remove seven T10 Torx screws on the back.
- The two screws at the bottom of the front can remain.

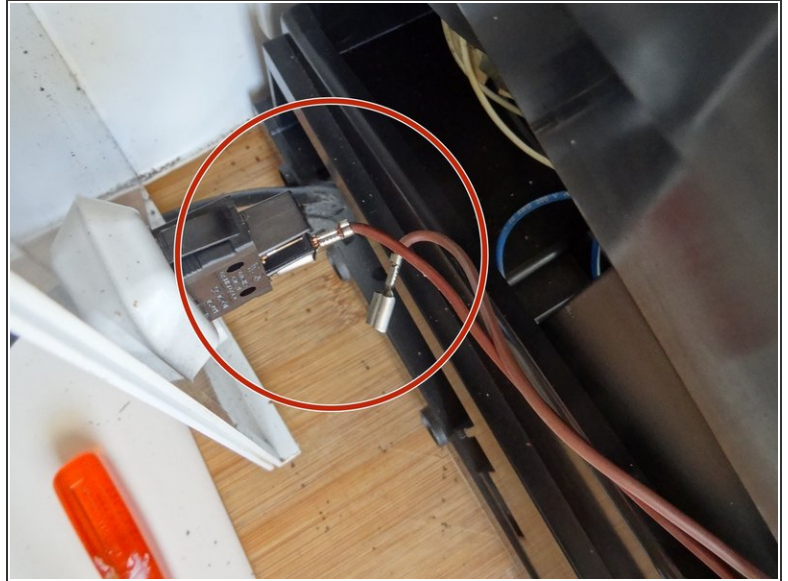


## Step 4



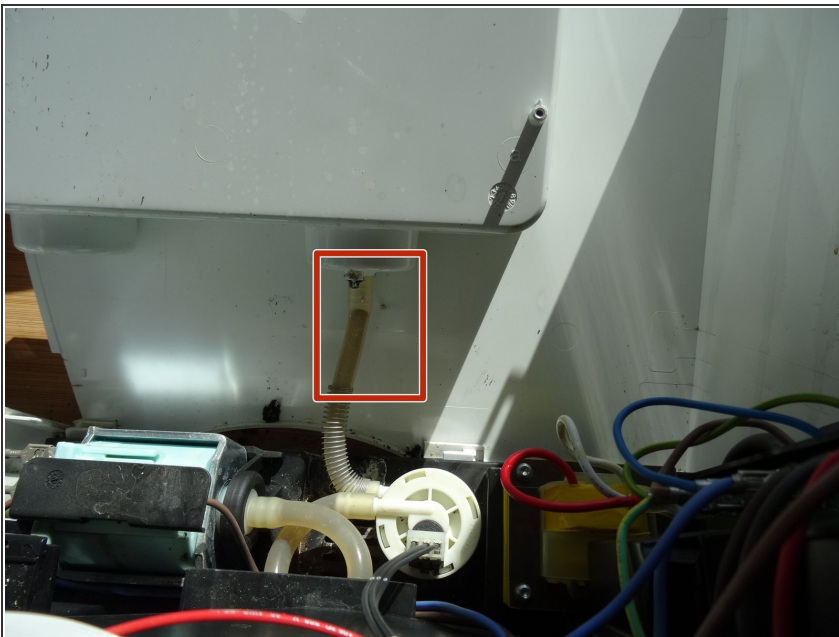
- Press with a flat-head screwdriver into the openings on the side with the water tank. This releases the latches on the top.
- Press the flat-head screwdriver into the opening on the side with the brew group. This will release the last notch on the top.
- Lift the top off.
- On some models, a cable leads to the sensor on the powder tray. Unplug the connector on this cable first.

## Step 5



- Slide the side section of the brewing unit about 2 cm to the rear. This sometimes gets stuck and may require some force to remove.
- Remove the two tabs from the power switch.
- Take off the side panel with the brew group.

## Step 6



- Do the same with the panel on the other side.
- To remove the water tank hose simply pull it of the pump.
- Remove the side panel.

## Step 7 — Gear Drive



- Rotate clockwise the expansion box about 60 degrees and pull it out.
- ⓘ The expansion box is frequently filled with coffee oils or grounds. Clean it from time to time. It can easily be separated into two halves.

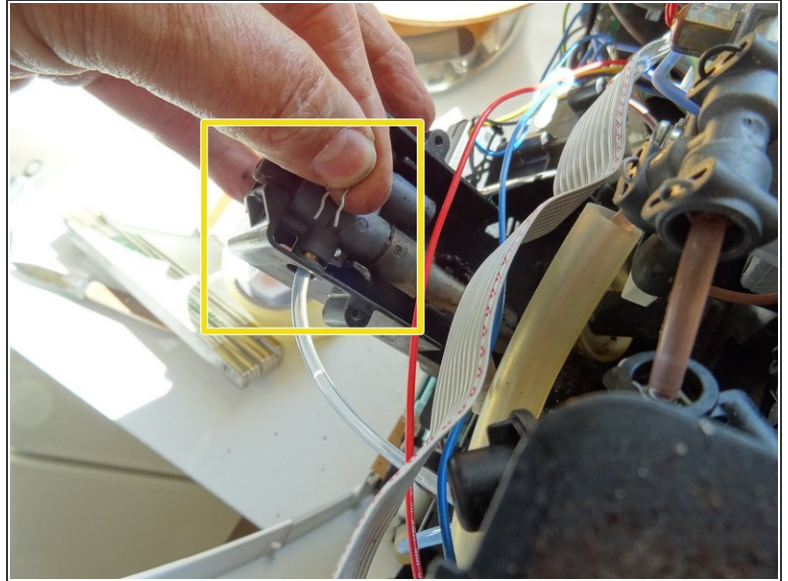
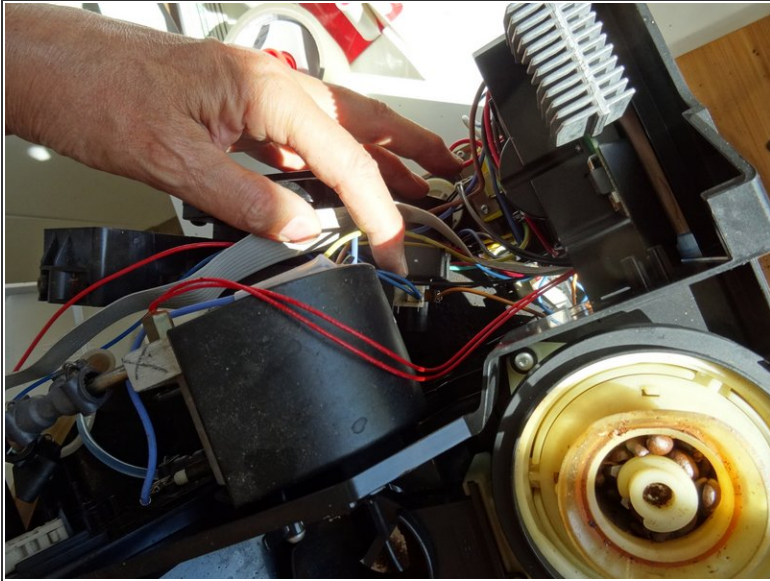
## Step 8



- ⓘ The drainage valve is directly plugged to the gear drive. The drive is fixed with five Torx T10 screws on the center panel behind the brew group.
- Remove the five Torx T10 screws holding the gear drive in place.



## Step 9



- Push the gear drive outwards to the left. Pay attention, several cables might get caught.
- Lay the gear drive on its side. Loosen the upper water connector by pulling the clamp and then sliding off the hose. Mind the O-ring on the end of the hose, replace it if necessary.

To reassemble your device, follow these instructions in reverse order.