



# Siemens Surpresso Grindstones Replacement

Replace the Grindstones in a Siemens Surpresso Compact

Written By: VauWeh



## INTRODUCTION

If the grindstones are bold, the coffeebeans are more crushed than grinded. New grindstones improve the aroma substantially.



### TOOLS:

- [T10 Torx Screwdriver](#) (1)
- [Flathead Screwdriver](#) (1)





### PARTS:

- [New Item](#) (1)

## Step 1 — Opening the Siemens Surpresso Compact



 **Unplug your coffee maker!**

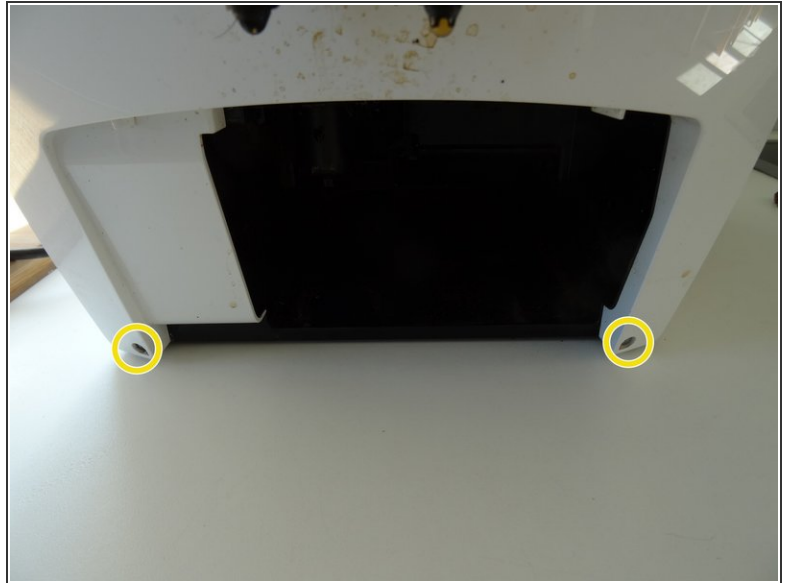
- Remove the water container, the brew group and the drip tray with pomace container.
- Using a spoon, remove as much of the coffee beans as possible from the coffee bean container.
-  Depending on the model, additional sensors with cables may be installed on the top and side panels. You have to remove these before you can completely remove the housing parts.

## Step 2



- Remove the two Torx T10 screws on the top.

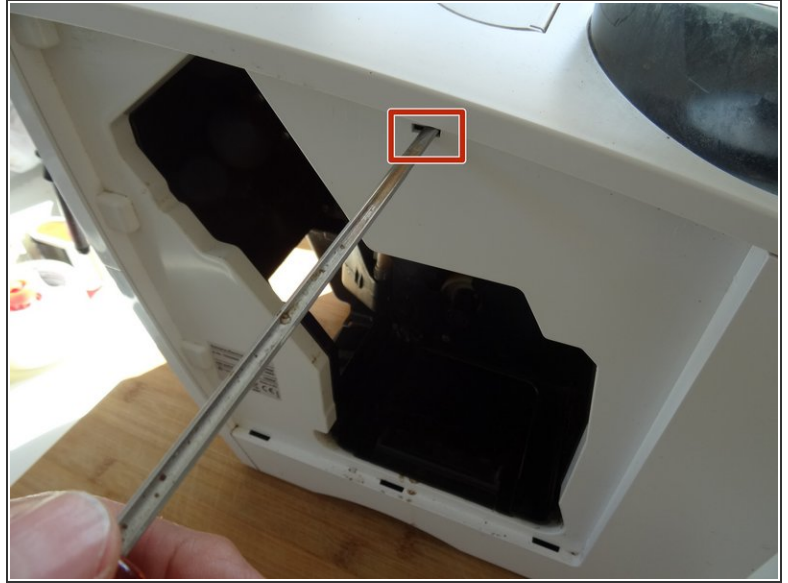
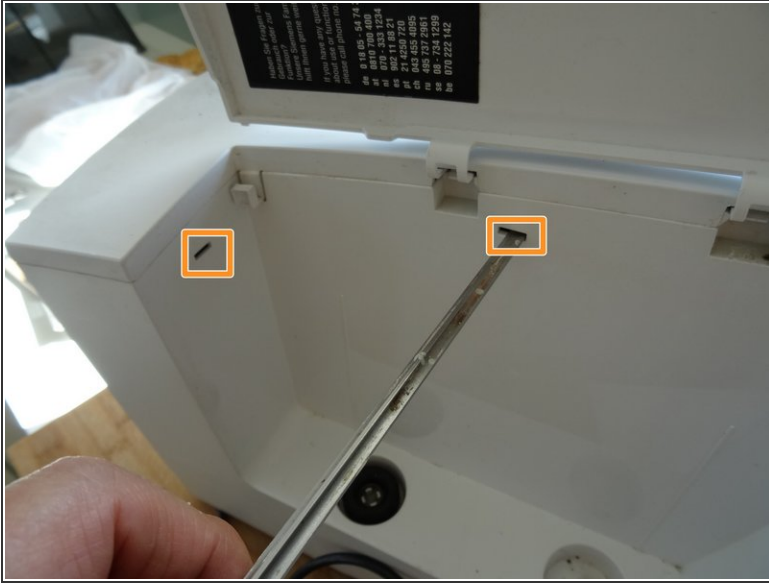
### Step 3



- Remove seven T10 Torx screws on the back.
- The two screws at the bottom of the front can remain.

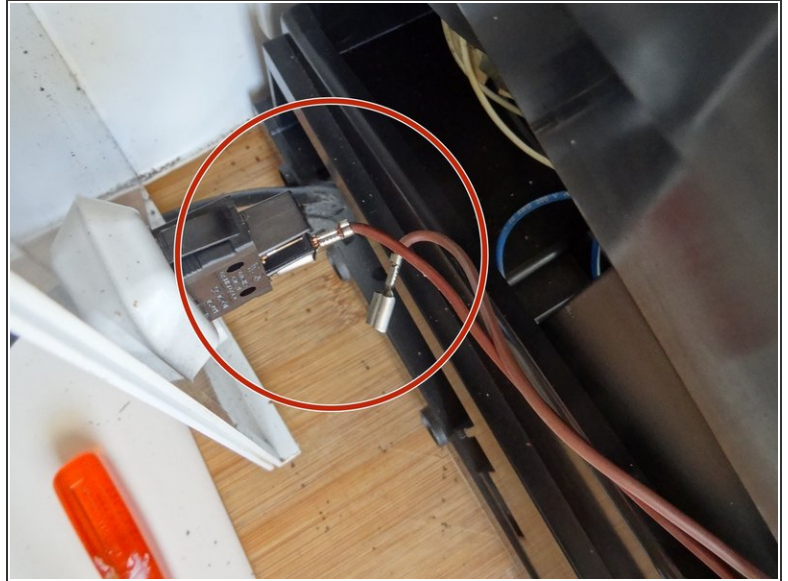


## Step 4



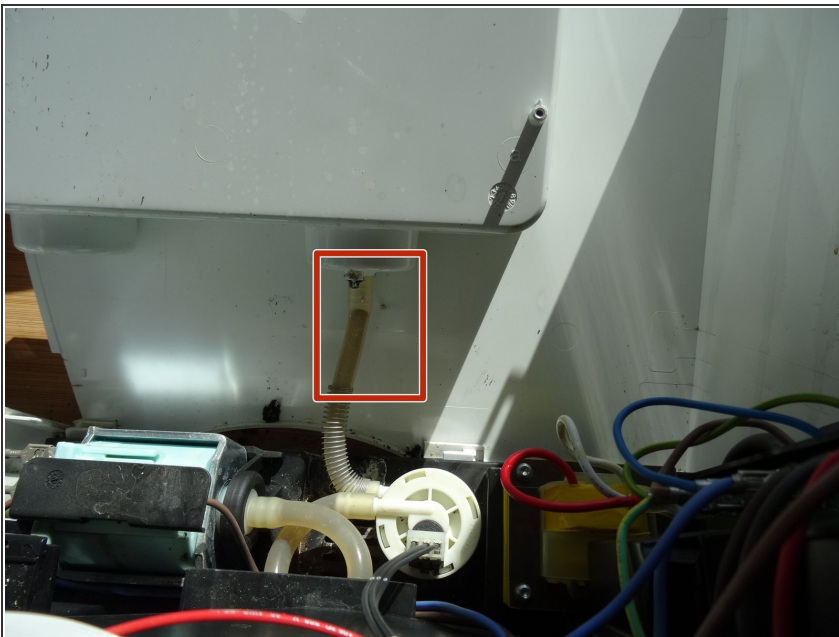
- Press with a flat-head screwdriver into the openings on the side with the water tank. This releases the latches on the top.
- Press the flat-head screwdriver into the opening on the side with the brew group. This will release the last notch on the top.
- Lift the top off.
- On some models, a cable leads to the sensor on the powder tray. Unplug the connector on this cable first.

## Step 5



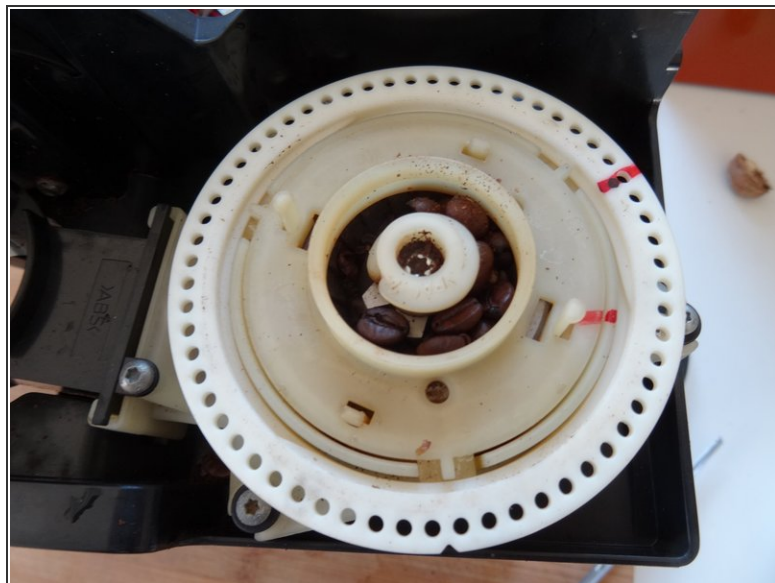
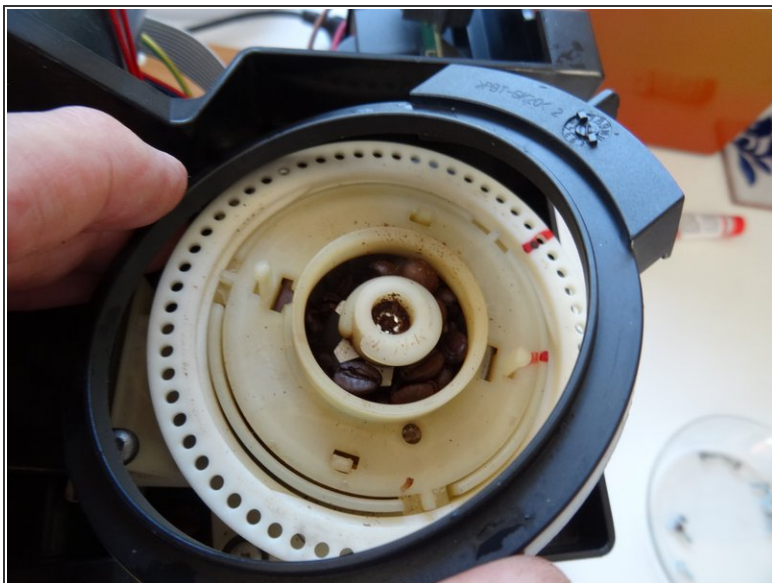
- Slide the side section of the brewing unit about 2 cm to the rear. This sometimes gets stuck and may require some force to remove.
- Remove the two tabs from the power switch.
- Take off the side panel with the brew group.

## Step 6



- Do the same with the panel on the other side.
- To remove the water tank hose simply pull it off the pump.
- Remove the side panel.

## Step 7 — Grindstones



- The grinder is situated on the top right rearside of the device. The adjuster and the outer ring can just be taken off. Be careful and do not use excessive force.
- The grinder is identical to the Jura grinder. [Use this guide](#) for replacement.

To reassemble your device, follow these instructions in reverse order.