



Siemes Surpresso Compact coffee outlet Replacement

Replacement of the coffee outlet on the Siemens Surpresso Compact

Written By: VauWeh



INTRODUCTION

If the coffee only sprays weakly out of the two outlets, or only pours out of one of the two outlets, then they are probably blocked with coffee fat. It's difficult to properly clean the component as the aroma of the coffee will always suffer. The replacement part costs less than 4 euros, the replacement is extremely easy and will be described here.

The replacement of the coffee outlet in the Titanium line TK56001 makes more trouble, because you have to open the casing. The guide can be found [here](#).



TOOLS:

- [Metal Spudger](#) (1)



PARTS:

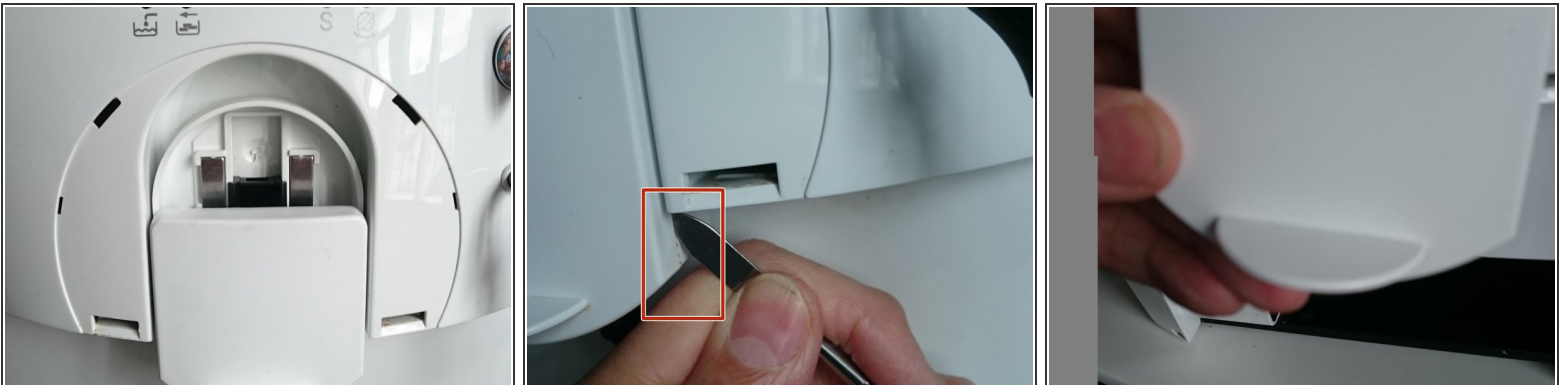
- [New Item](#) (1)

Step 1 — Coffee outlet



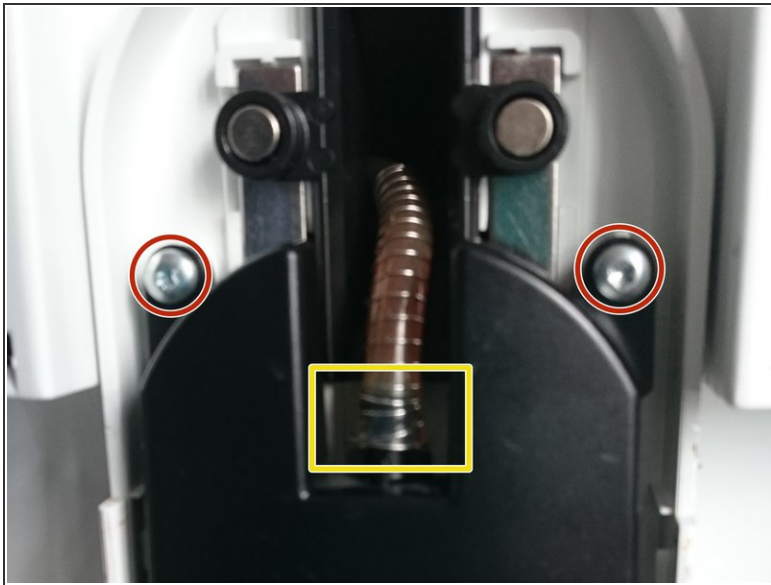
- To the left and right of the coffee outlet you will find two slots on the underside of the front cover.
- Insert a spudger in the front edge of this slot and loosen the clips that fasten the front cover.
- Pull the front cover forwards and off.

Step 2



- The image shows the machine after the front cover has been taken off. The four slots where the clips were are easily recognizable.
- The movable coffee outlet is surrounded by a casing. Place an opening tool in the gap that separates the two halves of the casing.
- Slide the tool along the gap, until the front casing becomes loose.
- Remove the front casing.

Step 3



- Remove the supply tube with a spudger from the connection. Pay attention to the outer wire spiral.
- Remove the two Torx T15 screws.
- Remove the black coffee spout.

To reassemble your device, follow these instructions in reverse order.