



Simplex TrueAlert Disassembly

How to take apart a Simplex TrueAlert alarm.

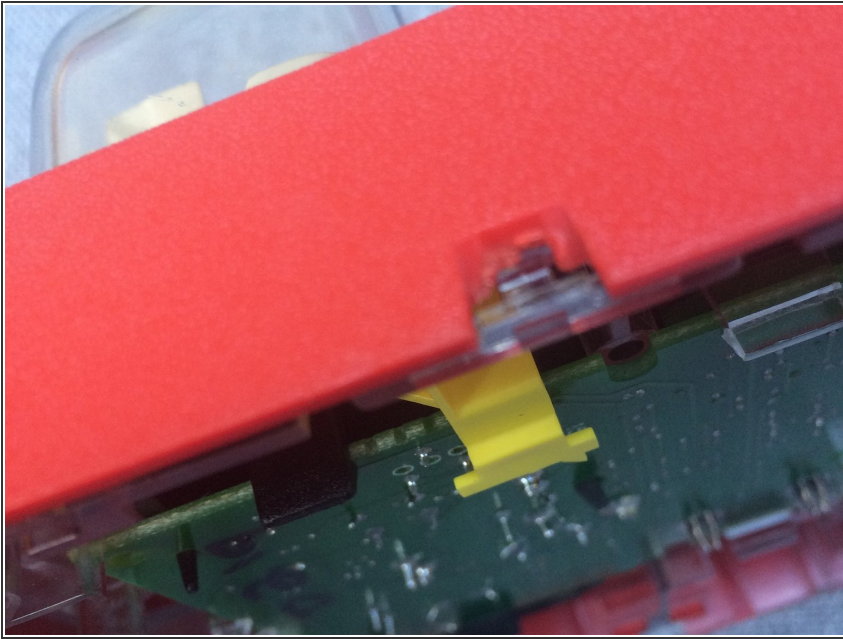
Written By: Alex



INTRODUCTION

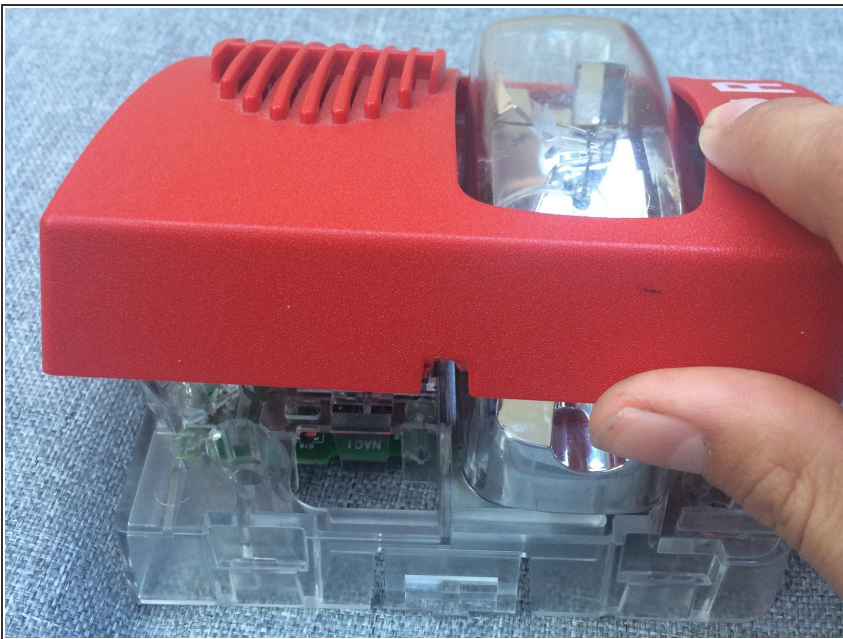
How to take apart a Simplex TrueAlert alarm.

Step 1 — Remove cover clips



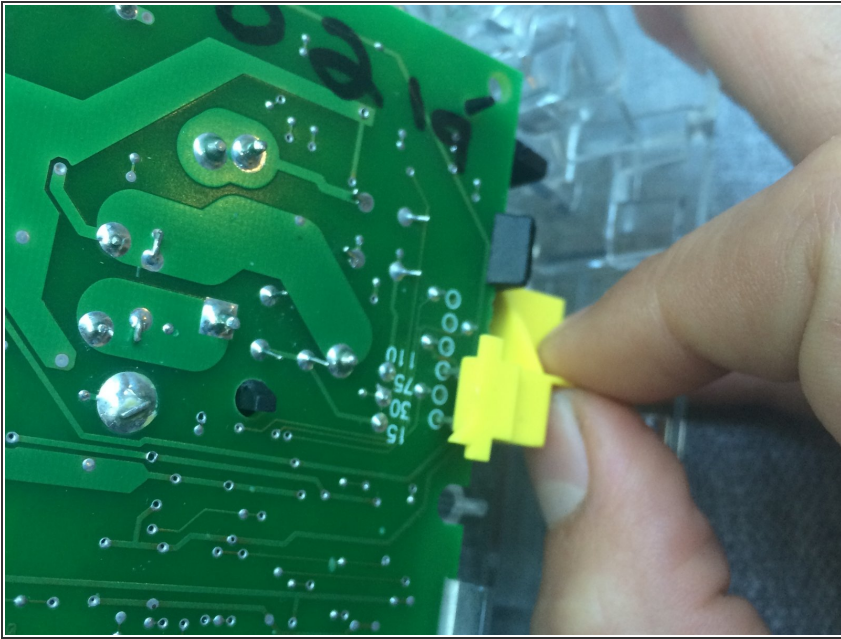
- Insert wisdom here.

Step 2 — Remove cover



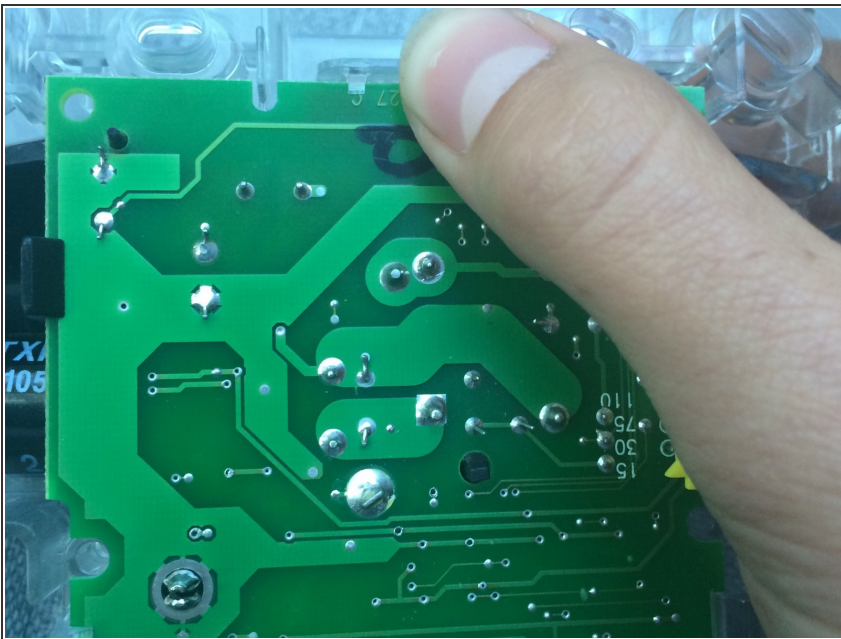
- Insert wisdom here.

Step 3 — Remove brightness switch



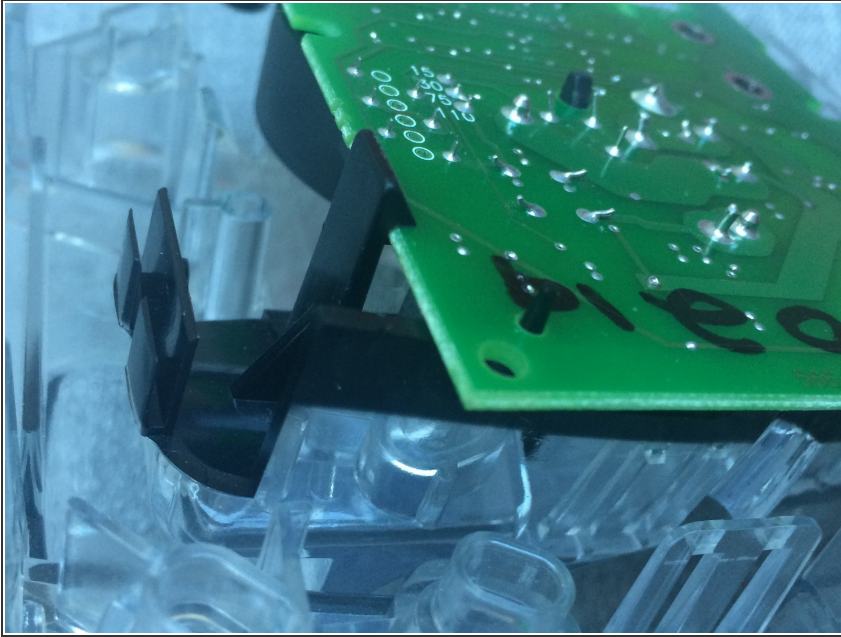
- Insert wisdom here.

Step 4 — Remove circuit board clips



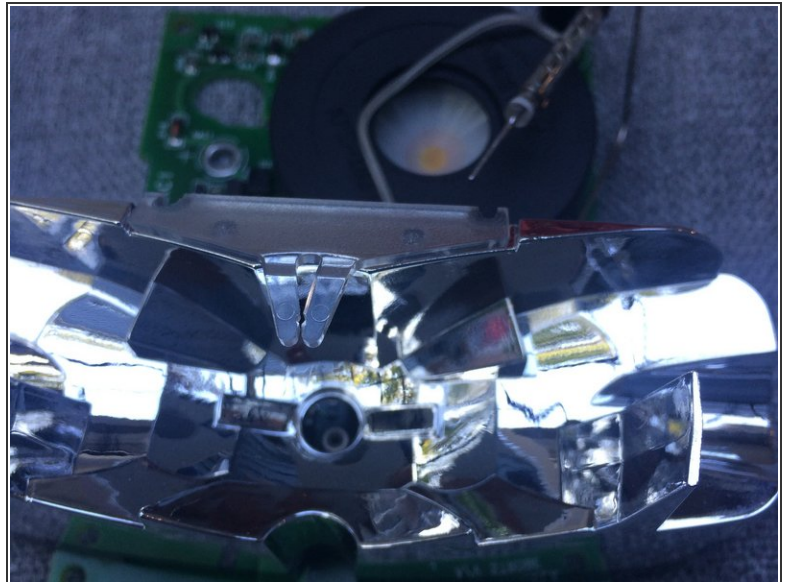
- Insert wisdom here.

Step 5 — Lift circuit board



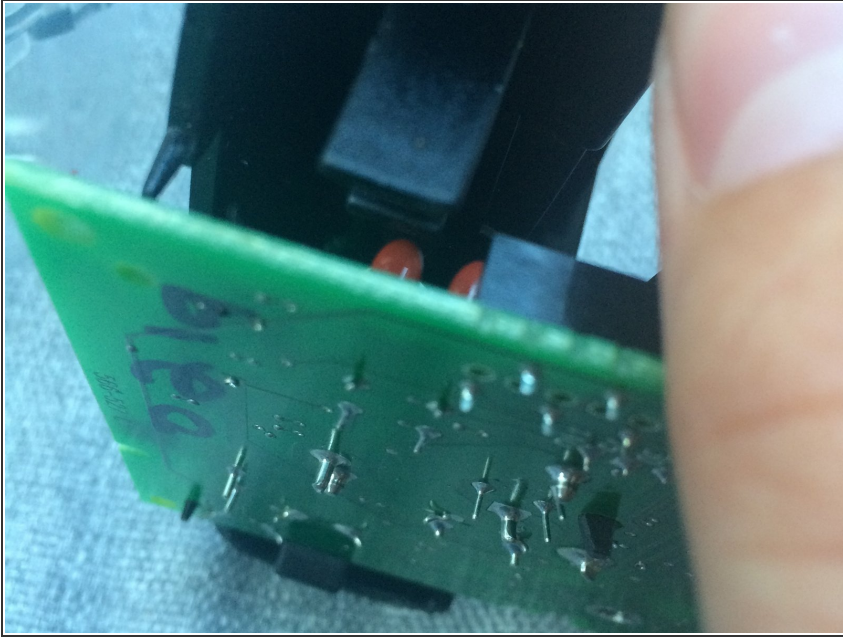
- Insert wisdom here.

Step 6 — Remove strobe tube



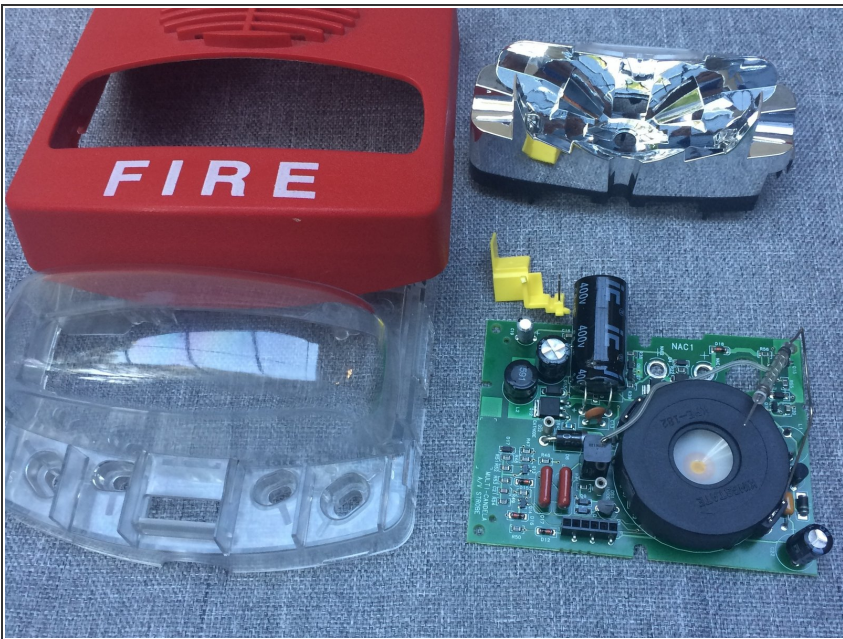
- Don't break the strobe tube

Step 7 — Remove plastic cover



- Insert wisdom here.

Step 8 — Done!



- Insert wisdom here.

To reassemble your device, follow these instructions in reverse order.