



# SimpliSafe Original Base Station Cellular Chip Module Replacement

This is a guide on replacing the cellular module chip and SIM Card found in the original SimpliSafe Hub.

Written By: Matt Zieminski



---

## INTRODUCTION

This guide will show you how to replace the SIM Card and Cellular connectivity chip system from the SimpliSafe Original system Base Station for reliable connectivity with the dispatch services.

---

### **TOOLS:**

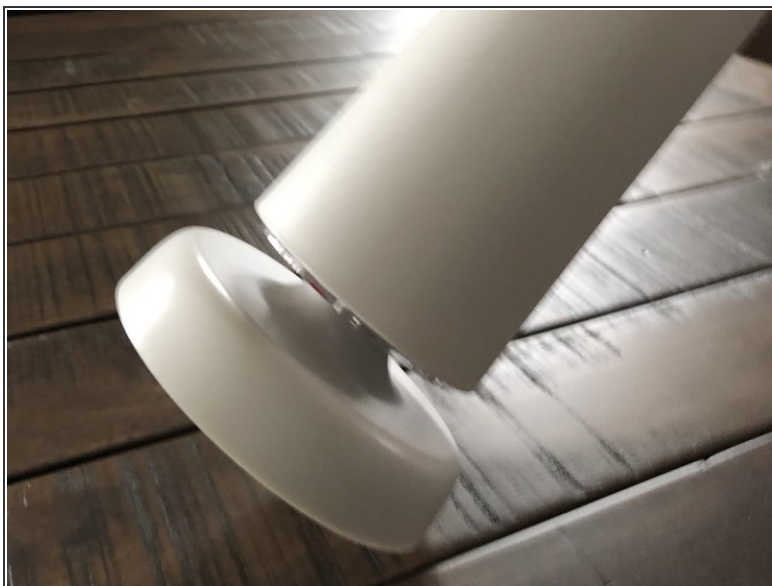
- [Phillips #1 Screwdriver](#) (1)
-

## Step 1 — Prepare your Base Station



- Make sure you perform the work on a flat well-lit surface.

## Step 2 — Turn the Base Station on the side and twist to remove the top cover



- Grasp the base of the Base Station with one hand and the upper part near the center while slowly twisting counter clockwise and up.

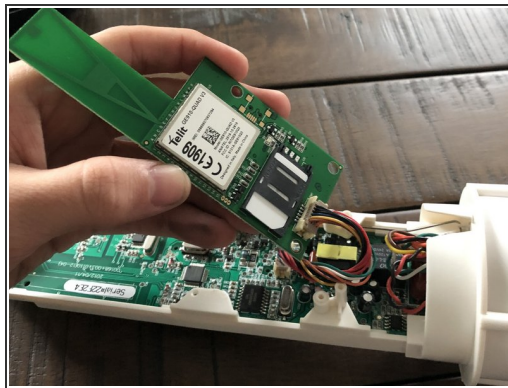


### Step 3 — Fully remove the top cover



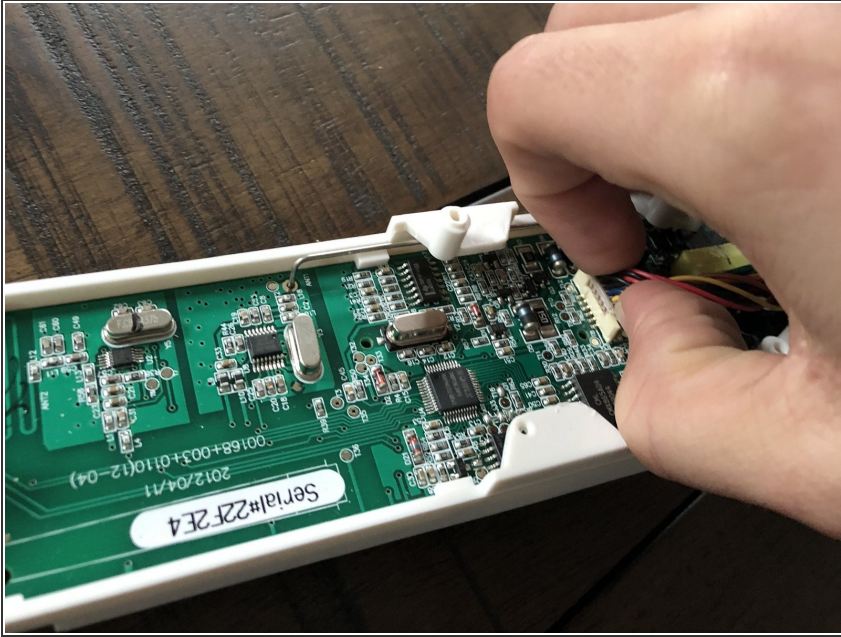
- Set the top cover somewhere to the side and in a safe area—you won't need this until reassembly.

### Step 4 — Remove the cellular chip module



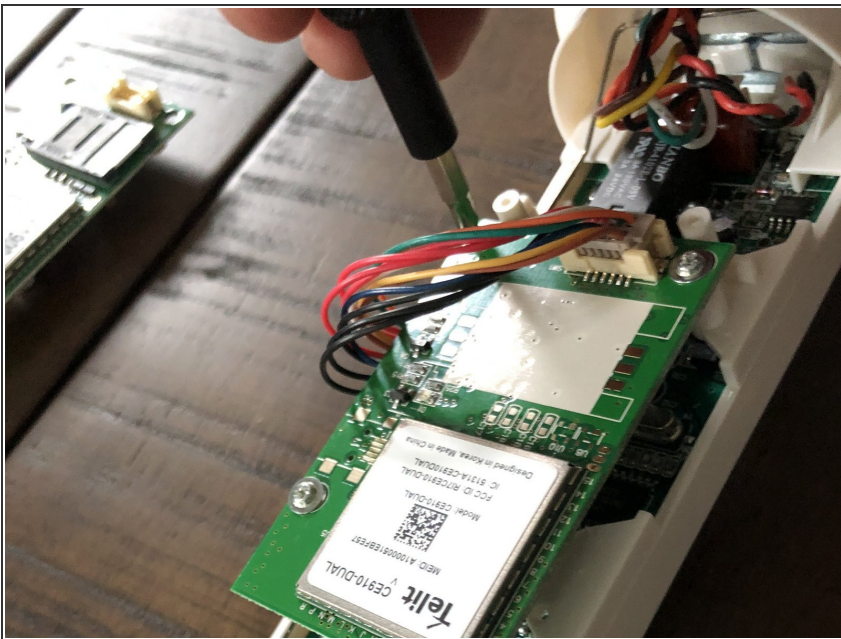
- Turn the Base Station on its side to achieve a better angle for the disassembly.
- Use a Phillips #1 screwdriver bit to remove 3 screws securing the chip module to the rest of the base station.
- After you remove the screws, you'll need to disconnect the cable connecting the two chip boards that are secured with an FPC connector.
- Use your fingers to grip the two edges of the cable and firmly pull up while holding the board down. Do so carefully so as not to remove the soldered connector from the board.

## Step 5 — Remove the FPC Connector Cable



- Remove the connector link cable between the two boards after disconnecting the cellular chip board.
- Use the same method as before, gripping just the edges of the connector and pulling up.

## Step 6 — Install the new chip module



- Resecure the FPC Connecting cable to the board and to the new chip module.
- Use the three Phillips #1 screws from the earlier step and resecure the module to the base station.



## Step 7 — Reassemble your Base Station



- Reattach the Base Station cover.
- SimpliSafe provides you with a prepaid label and ESD-safe bubble wrap to ship back the old module for recycling.

To reassemble your device, follow these instructions in reverse order.