



Singer Europa 100 Disassembly

Partial dismantling of the Europa 100 washing machine

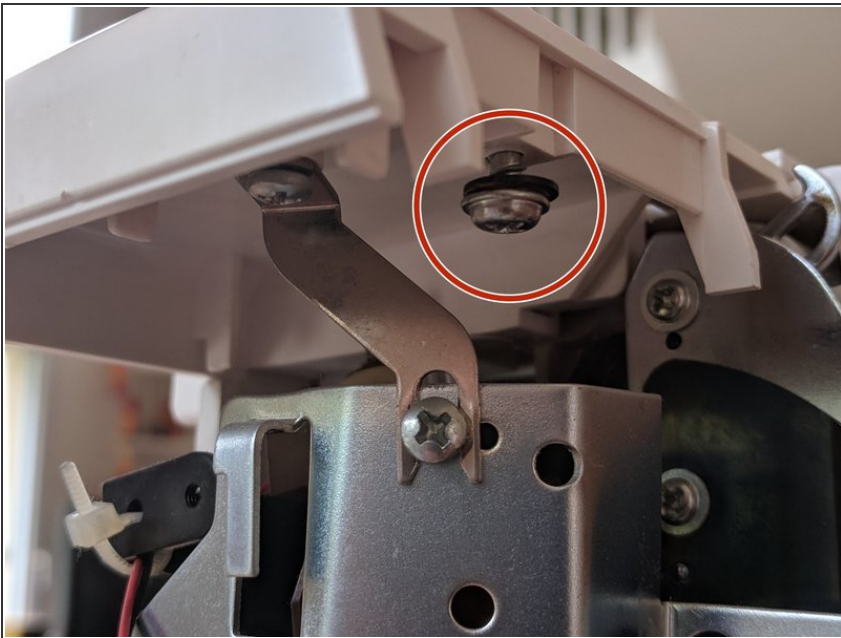
Written By: Bossard Nicolas

Step 1 — Singer Europa 100 Disassembly



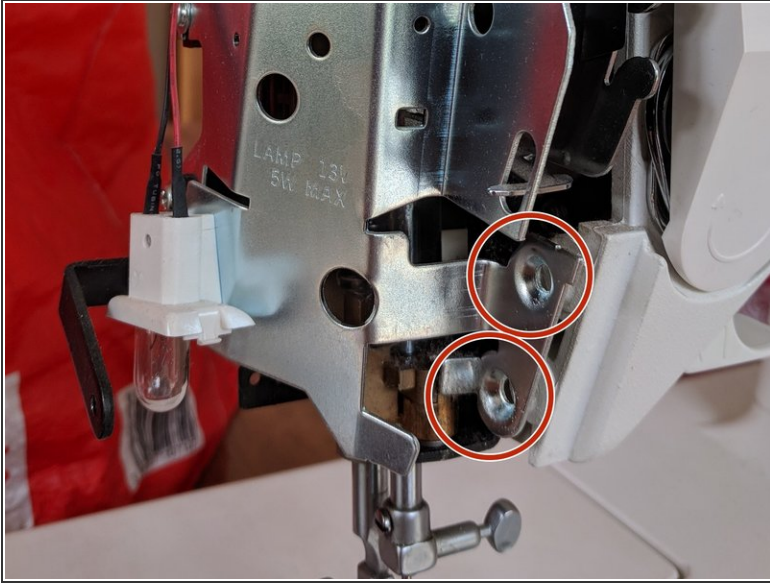
- Dismantle the main case

Step 2



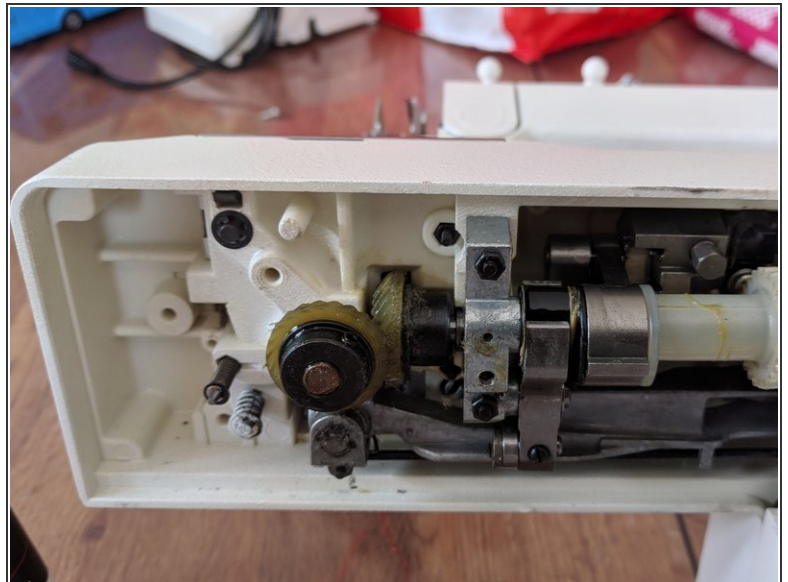
- Remove this screw completely. This will allow you to remove the plastic cover

Step 3



- Remove these two pins that hold the plastic shell on

Step 4



- Remove all clips and separate shell
- Remove cover

To reassemble your device, follow these instructions in reverse order