



# Skil X-Drive 18V Cordless Drill Model No. 2887

## Directional Switch Replacement

Replace your directional switch on your drill.

Written By: Michael



## INTRODUCTION

If you are having a problem with this switching getting stuck you may need to follow this guide to replace it.

---

### TOOLS:

- [Phillips #2 Screwdriver](#) (1)
  - [T40 Torx Key](#) (1)
  - [T10 Torx Screwdriver](#) (1)
-

## Step 1 — Un-clip Battery



- Grip the drill. Locate the red locking switch on the back of the battery. Hold the switch down.

## Step 2 — Remove Battery



- While holding down the red locking switch, slide the battery towards the back of the drill until the battery is fully removed from the drill.



### Step 3 — Remove Handle



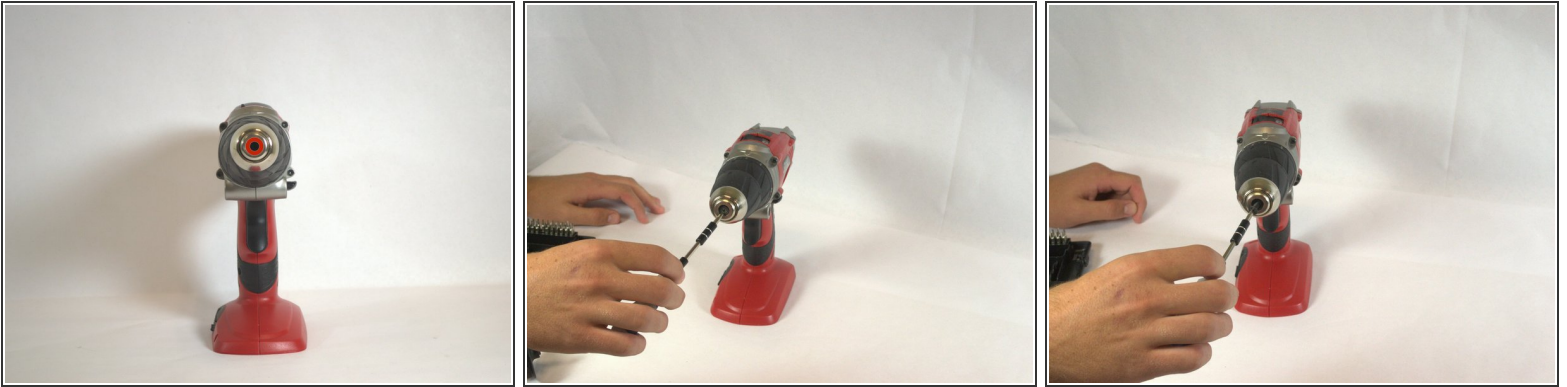
- Grip cordless drill firmly with left hand. Grip the cordless drill handle firmly with the right hand. Rotate the handle counterclockwise in order to remove the handle from the drill.

### Step 4 — Remove Gauge



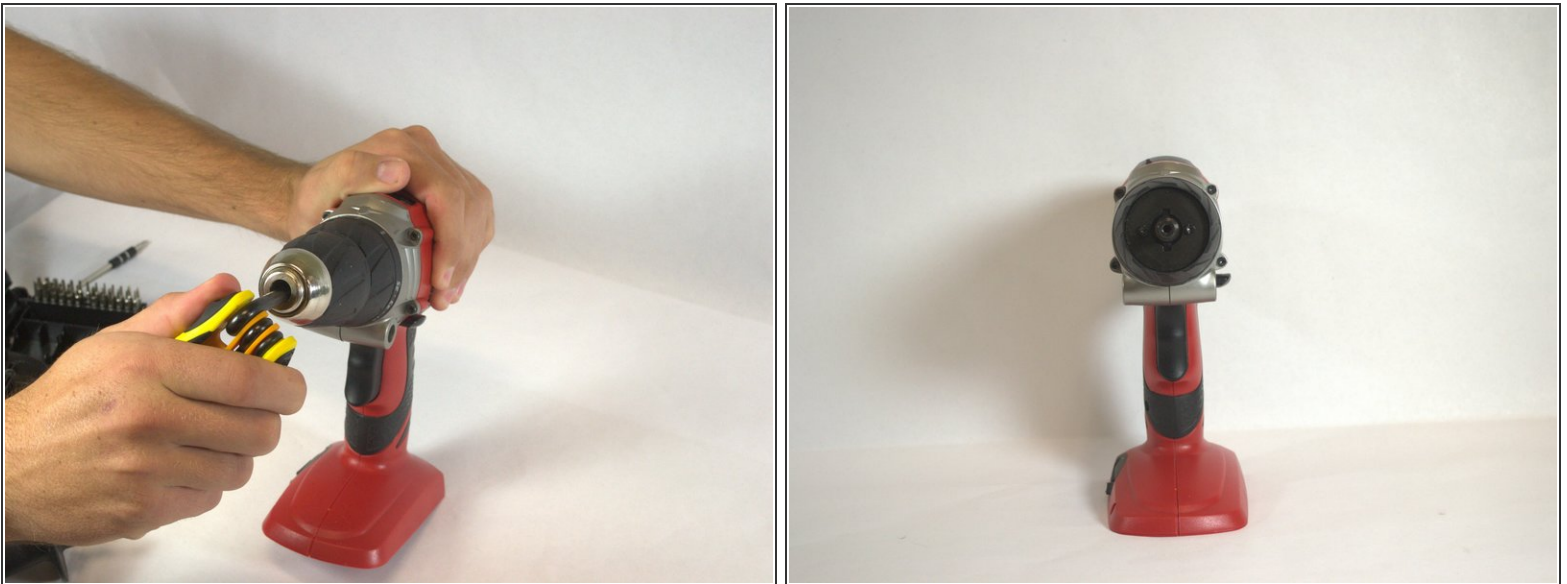
- Hold drill upright with one hand and slide the gauge backwards to remove it with the other.

## Step 5 — Remove the screw from the chuck sleeve



- The chuck sleeve is held on by a 20mm Phillips #2 screw in the center. This screw is reverse threaded. Insert a Phillips #2 screwdriver and rotate it clockwise to loosen and remove it.

## Step 6 — Remove the chuck sleeve



- The threaded hole the screw was in is in the shape of a 6-point star. Insert a T40 Torx Key and rotate it clockwise to loosen and remove the chuck sleeve.

## Step 7 — Remove the screws from the adjustable clutch



- ⓘ Set the adjustable clutch to the "1" setting before beginning. This will make it easier to remove.
- The adjustable clutch is held on by 2 20mm T10 Torx screws. Insert a T10 Torx screwdriver and rotate it counterclockwise to loosen and remove each screw.



## Step 8 — Remove the adjustable clutch



- Firmly grip the outside of the adjustable clutch and pull it off.
- ⓘ There is a metal washer behind the adjustable clutch that holds in 12 small ball bearings. Hold the drill so it is pointing up slightly so the washer and bearings do not fall out.

## Step 9 — Reversing Switch Lever



- Remove the 4 20mm T10 Torx screws. Insert a T10 Torx screwdriver and turn counterclockwise.

## Step 10



- Once screws have been taken out, remove the grey cover.

## Step 11



- Remove the 4 20mm T10 Torx screws. Insert a T10 Torx screwdriver and turn counterclockwise.
- Grab the grey rear of the drill and slide it off.

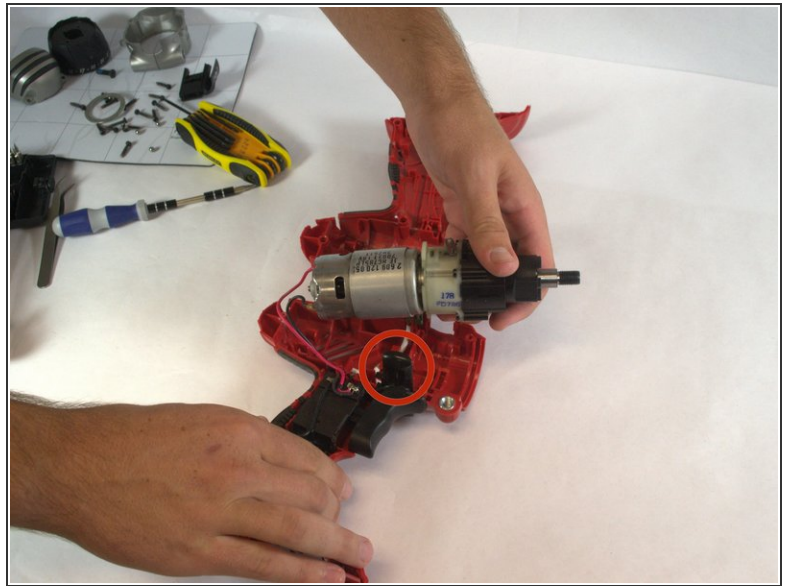
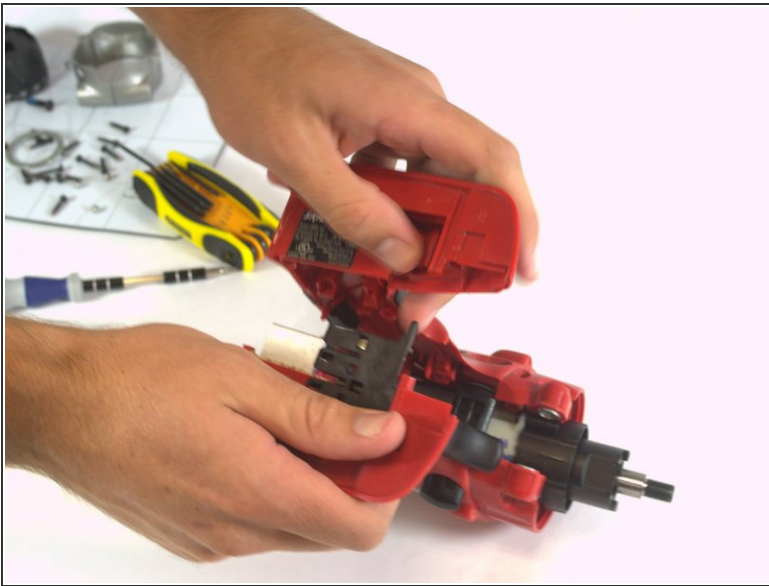


## Step 12



- Continue by removing the 420mm T10 Torx screws that are left on the handle.
- This screw is too deep for the screw driver to reach so use the Torx Key to unscrew this screw.

## Step 13



- Start to pull the casing apart at the bottom of the drill.
- Continue to move up the drill until you have separated the two sides of the drill
- Take out the old directional switch and replace it with the new one.

To reassemble your device, follow these instructions in reverse order.

This document was generated on 2019-09-23 08:11:05 AM (MST).

