



SkullCandy Hesh Aux Cord Replacement

This guide will show SkullCandy Hesh users how to replace their aux cord after being severed or frayed.

Written By: Sarah Burk



INTRODUCTION

In the case of a severed or frayed aux cord, replacements can be purchased or salvaged from another broken device. This guide will show users how to replace it temporally, without the use of a soldering gun.



TOOLS:

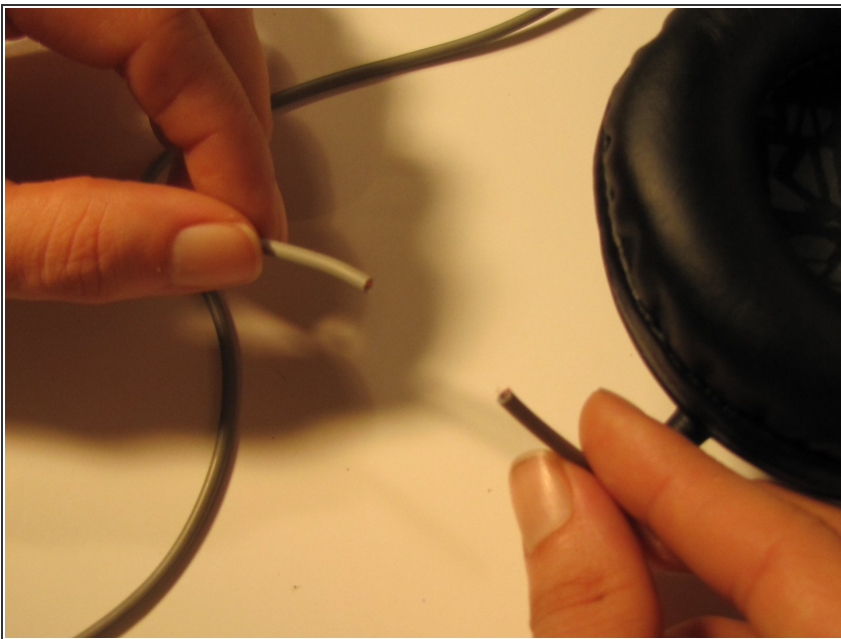
- [Flush Wire Cutters](#) (1)
 - [Spudger](#) (1)
 - [Electrical Tape in 6 Assorted Colors](#) (1)
-

Step 1 — Determine the damage



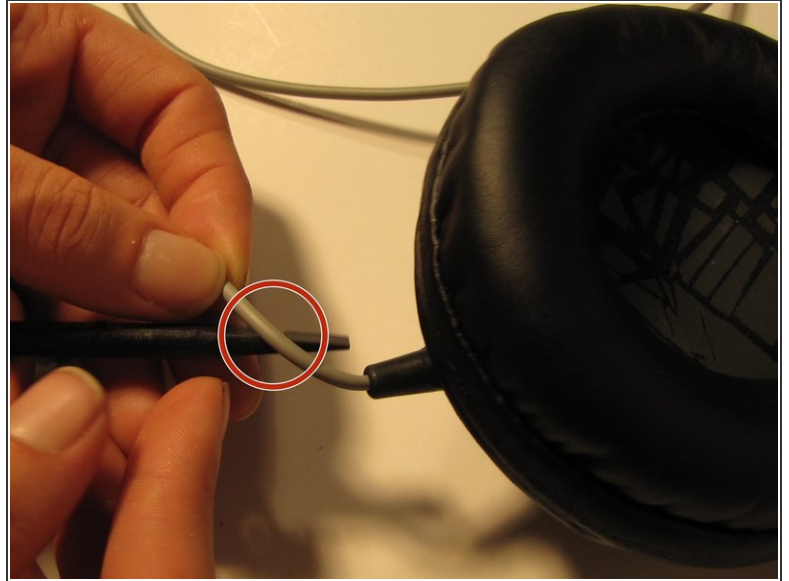
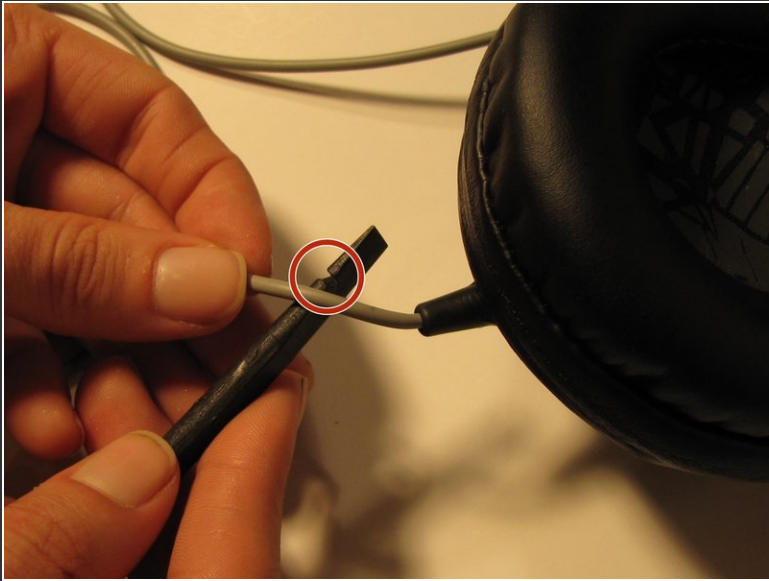
- Gently gripping the aux cord, run your fingers down its length, feeling for bumps or tears in the plastic sheathing. If there are multiple damaged areas, choose the one most proximal to the device.

Step 2



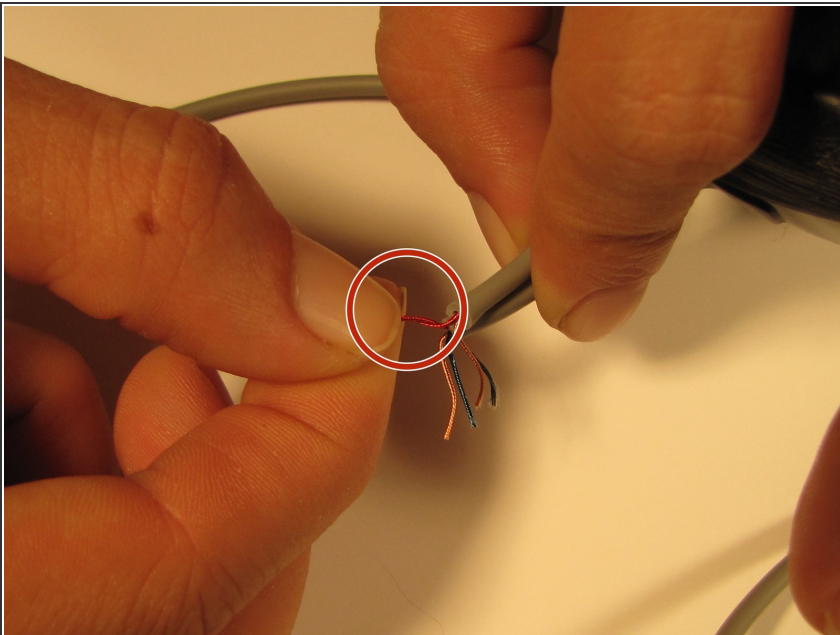
- Cut the aux cord at the determined damaged area, and the replacement cord to the appropriate length.

Step 3



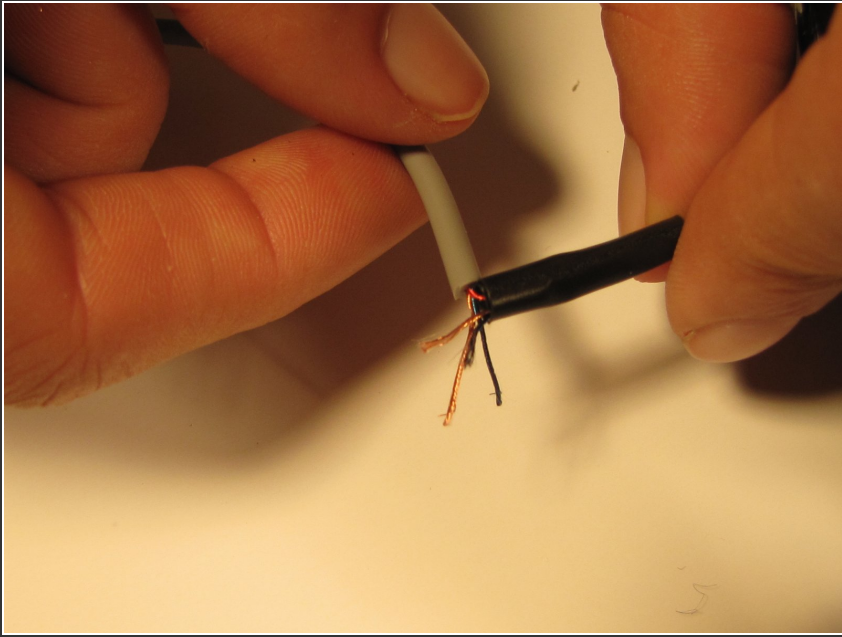
- Use the indentation on the spudger tool to grip and remove the plastic sheath from the devices working wire and the new aux cord.

Step 4



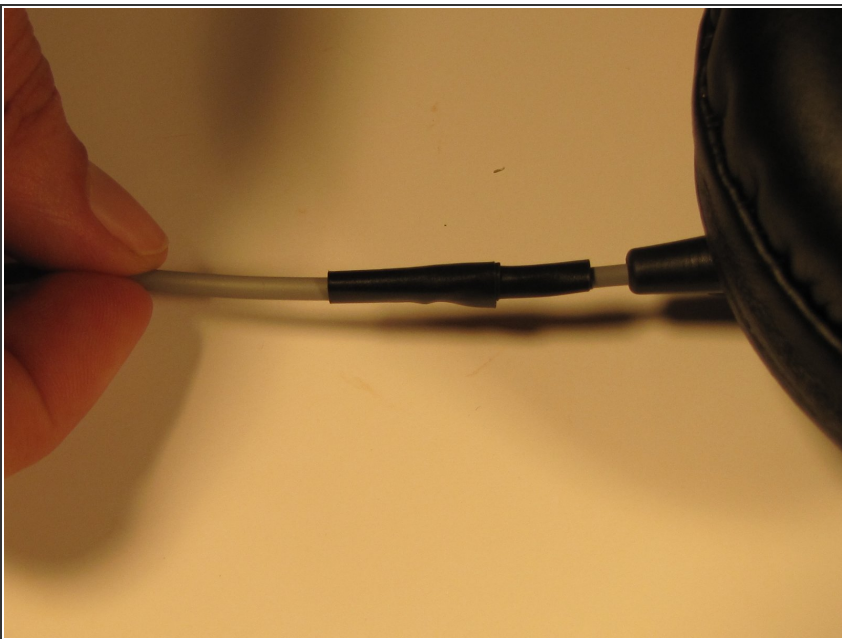
- Twist the cords of matching color together, first ensuring that the ends are trim- without loose frays.

Step 5



- Wrap the ends with a layer of electrical tape, repeat the last two steps for each set of wires.

Step 6



- Secure all pieces with a layer of tape around the new cord.

To reassemble your device, follow these instructions in reverse order.